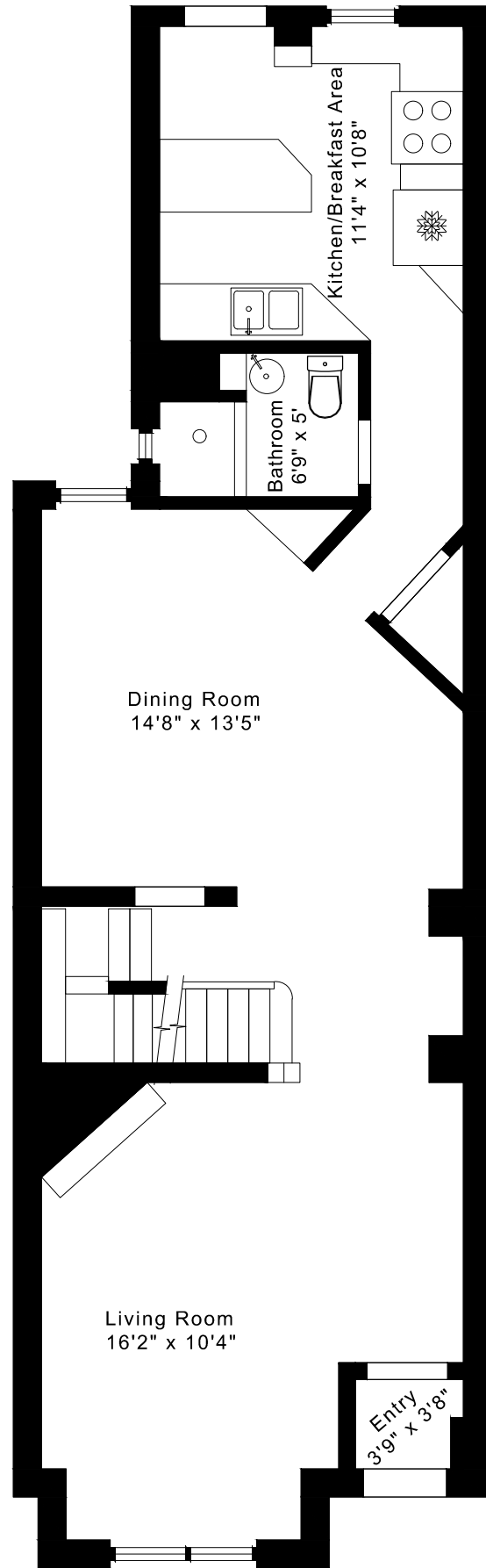
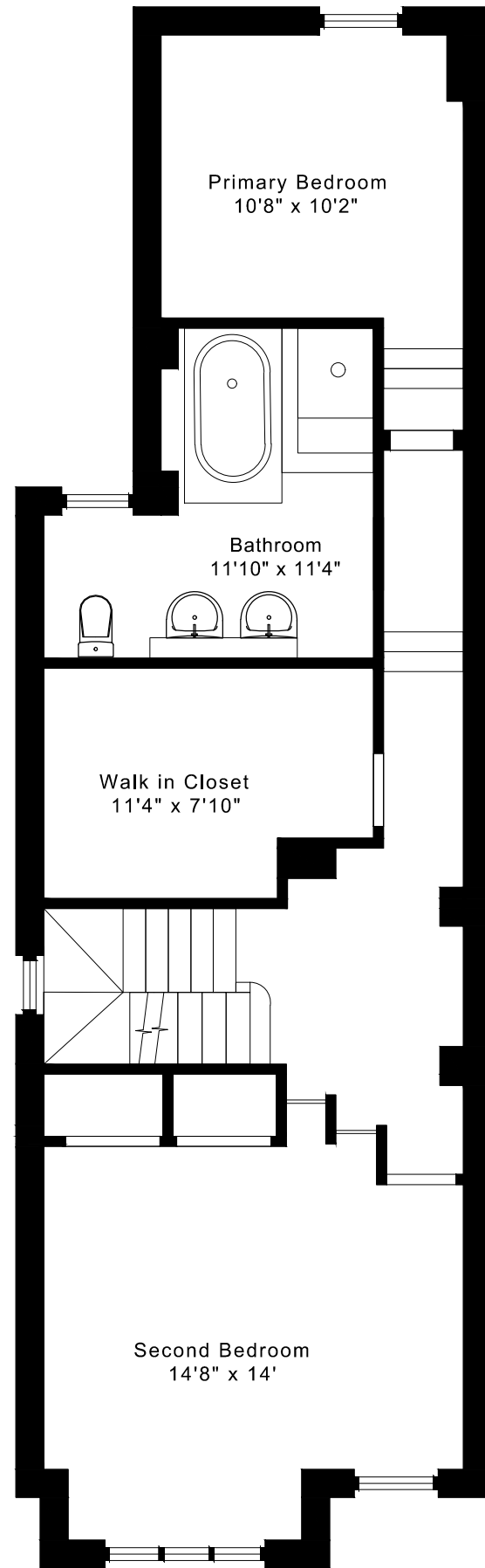


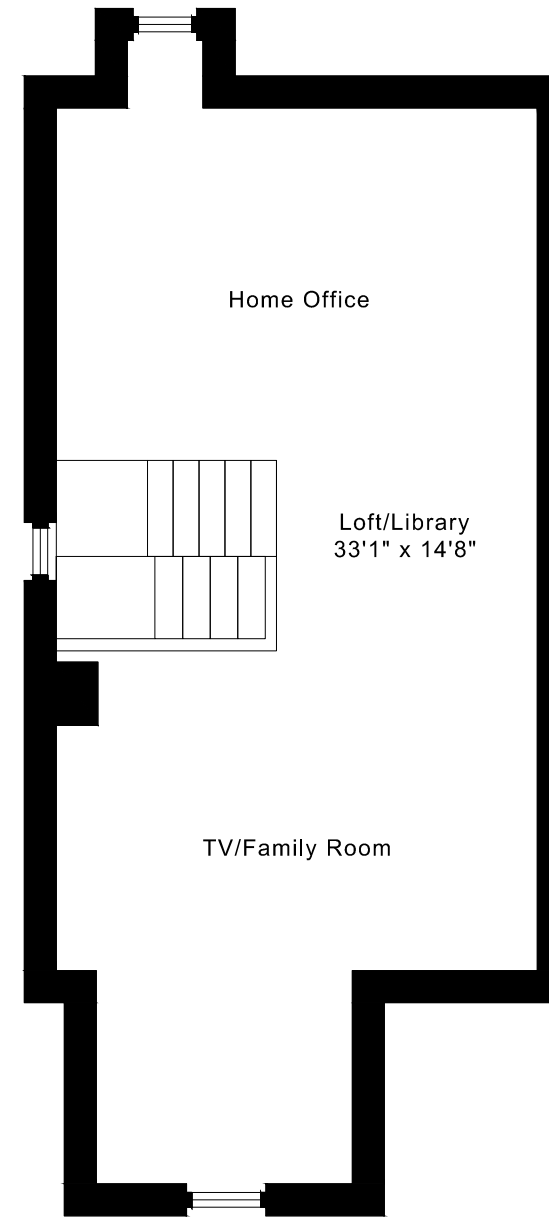
460 WELLESLEY STREET EAST FLOOR PLANS



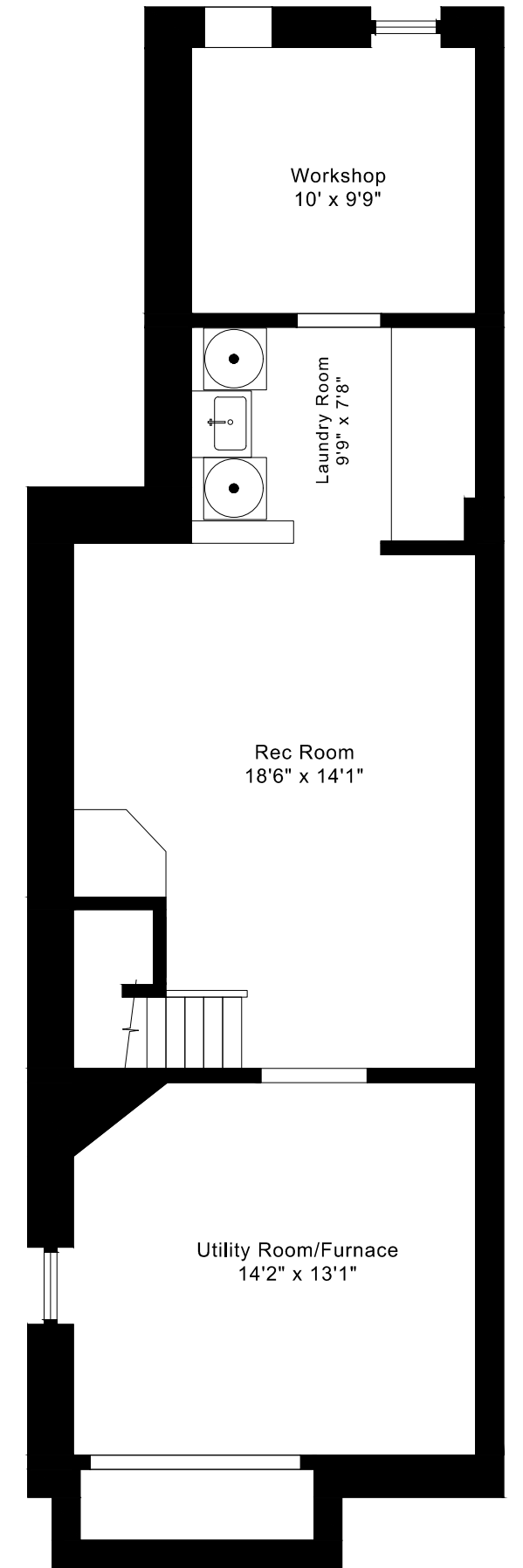
MAIN FLOOR
830 SQUARE FEET



SECOND FLOOR
830 SQUARE FEET



THIRD FLOOR
425 SQUARE FEET

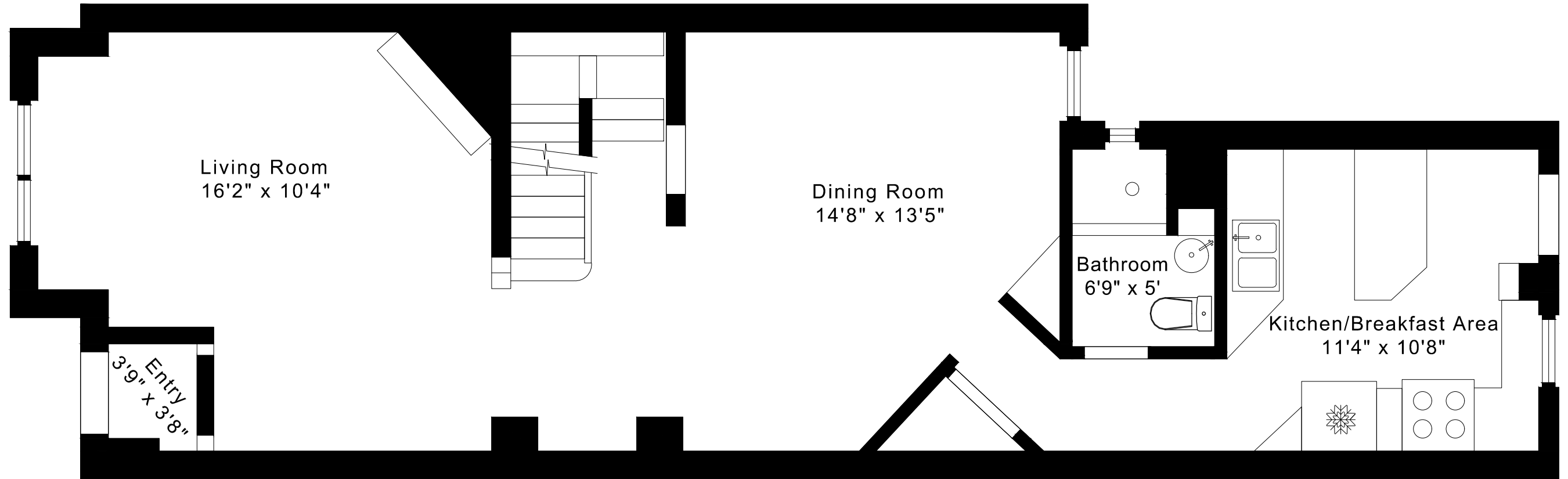


LOWER FLOOR
830 SQUARE FEET

2085 sq ft + 830 sq ft
BELOW GRADE

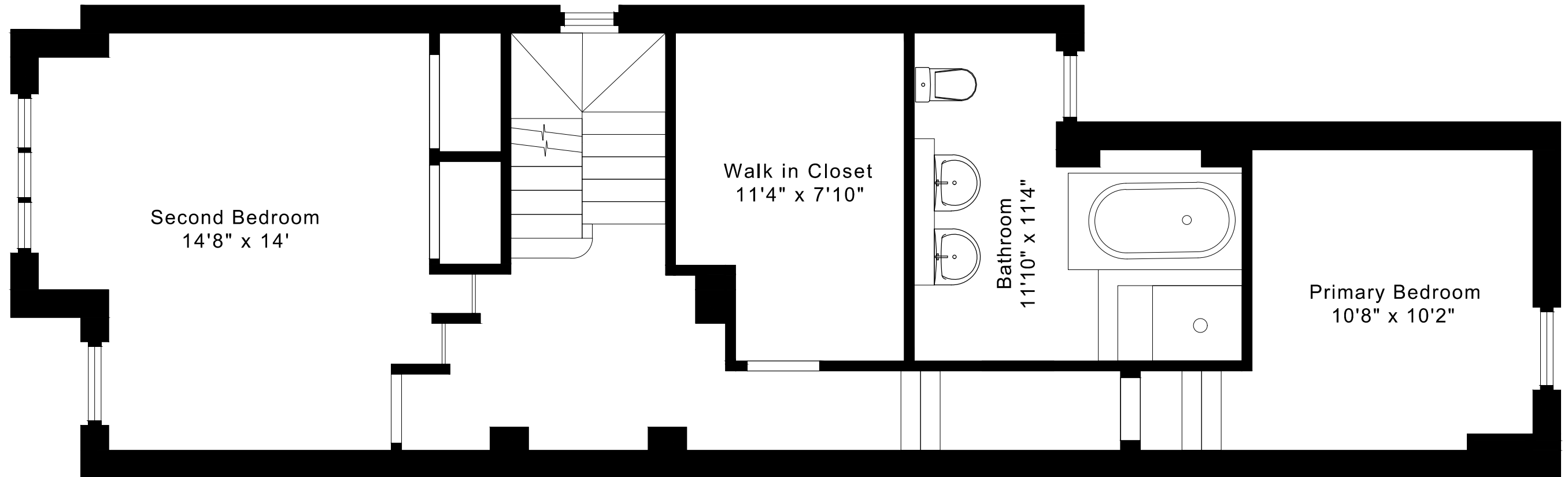
460 WELLESLEY STREET EAST FLOOR PLANS

MAIN FLOOR 830 SQUARE FEET



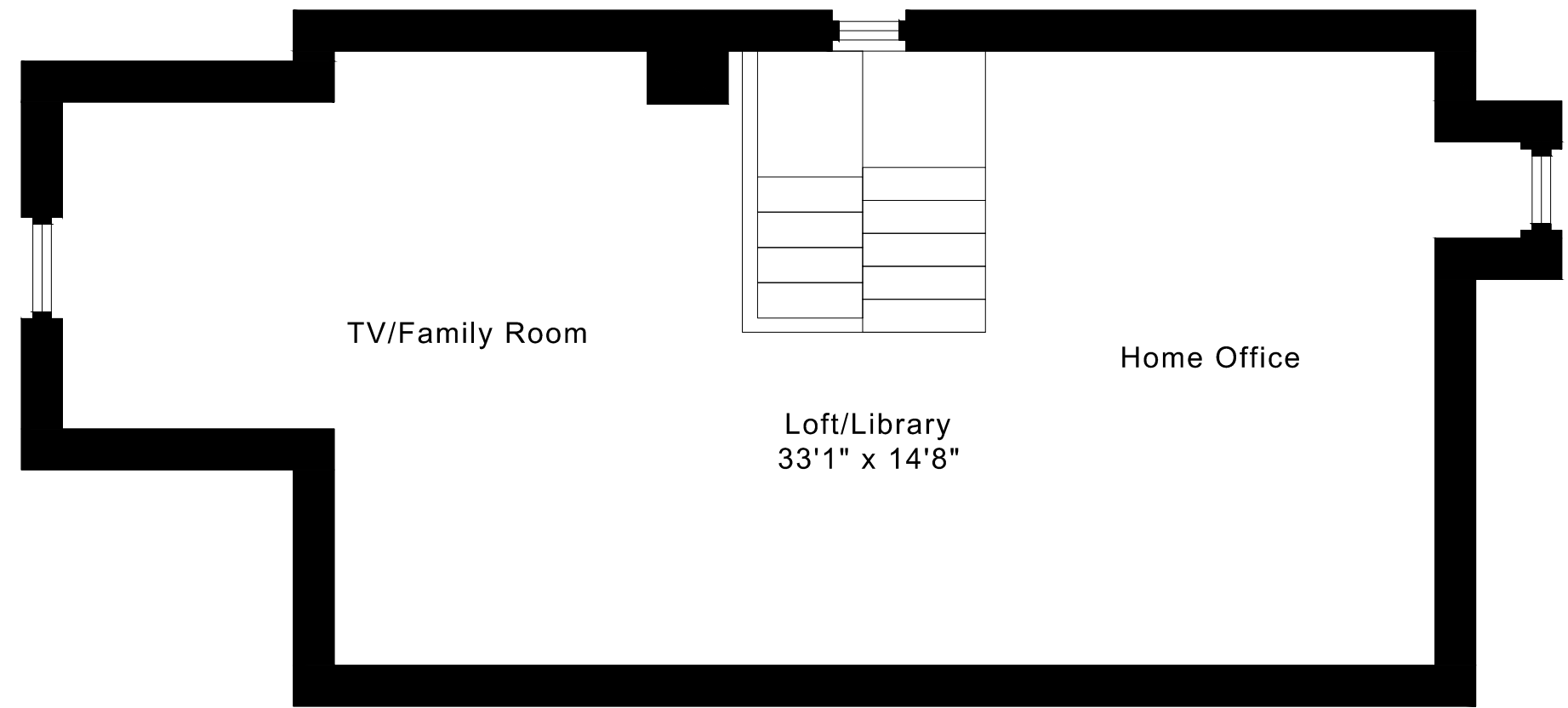
460 WELLESLEY STREET EAST FLOOR PLANS

SECOND FLOOR 830 SQUARE FEET

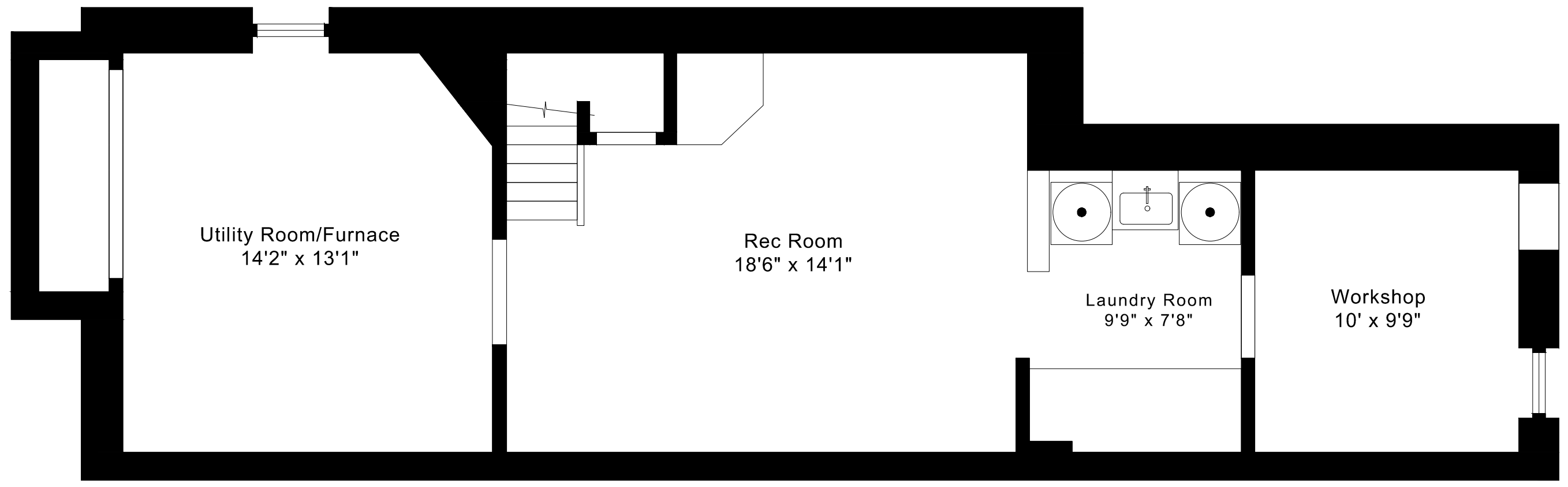


460 WELLESLEY STREET EAST FLOOR PLANS

THIRD FLOOR 425 SQUARE FEET



460 WELLESLEY STREET EAST
FLOOR PLANS
LOWER FLOOR 830 SQUARE FEET



460 WELLESLEY STREET EAST ROOM MEASUREMENTS

Floor	Room	Imperial						Metric [m]		
		Length		Width		Height		Length	Width	Height
		Feet	Inches	Feet	Inches	Feet	Inches			
Third	Loft/Library	33	1	14	8	11	8	10,08	4,47	3,56
Second	Primary Bedroom	14	8	14	0	8	10	4,47	4,27	2,69
	Second Bedroom	10	8	10	2	8	10	3,25	3,10	2,69
	Bathroom	11	10	11	4	7	3	3,61	3,45	2,21
	Walk in Closet	11	4	7	10	8	10	3,45	2,39	2,69
Main	Entry	3	9	3	8	9	10	1,14	1,12	3,00
	Living Room	16	2	10	4	9	10	4,93	3,15	3,00
	Dining Room	14	8	13	5	9	10	4,47	4,09	3,00
	Kitchen/Breakfast Area	11	4	10	8	9	10	3,45	3,25	3,00
	Bathroom	6	9	5	0	9	10	2,06	1,52	3,00
Lower	Rec Room	18	6	14	1	7	1	5,64	4,29	2,16
	Utility Room/Furnace	14	2	13	1	7	1	4,32	3,99	2,16
	Laundry Room	9	9	7	8	7	1	2,97	2,34	2,16
	Workshop	10	0	9	9	7	1	3,05	2,97	2,16

The following is a disclaimer regarding the approximate nature of dimensions and floor areas listed in this document:

Disclaimer:

The dimensions and floor areas listed in this document are provided as an estimate only and are intended to be used for illustration purposes only. These measurements are not necessarily meant to be a perfect representation of the actual space.

Notes regarding measurement methods and accuracy:

The utilization of laser measurement technology during the 3D model capturing process at the location provides an accurate representation of floor plans, with a typical margin of error of 3-5%. For the most accurate and official measurement data, it is advised to consult official documents such as MPAC records, builder's pre-construction plans, or data from certified measurement companies.

Exterior wall thickness is included in the calculation of the overall square footage and is considered as a component of the footprint. The wall thickness measurement is obtained onsite whenever possible, or estimated in the event where obtaining onsite measurements is not possible, such as in the case of condominium buildings where wall thickness may vary throughout the building.