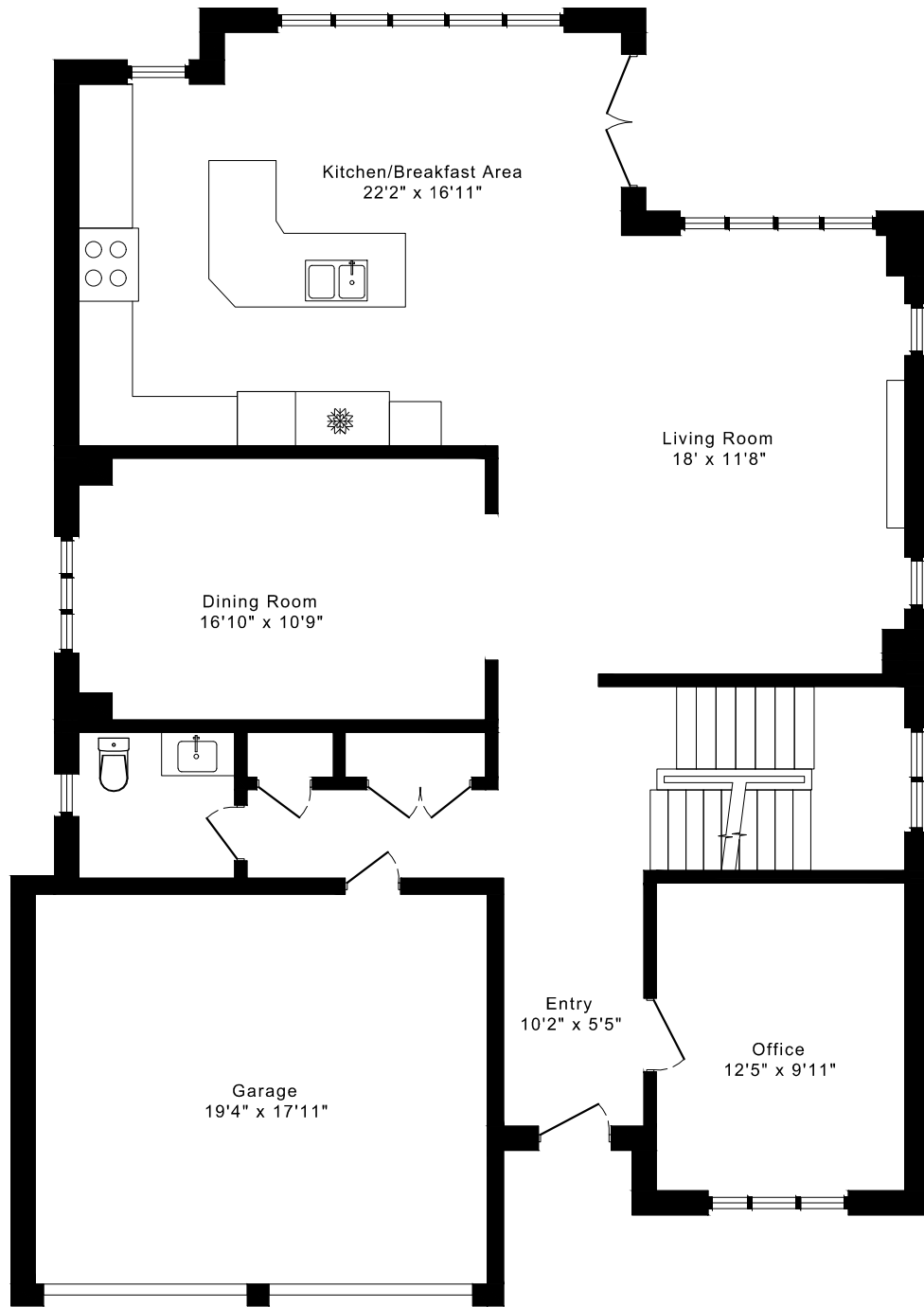
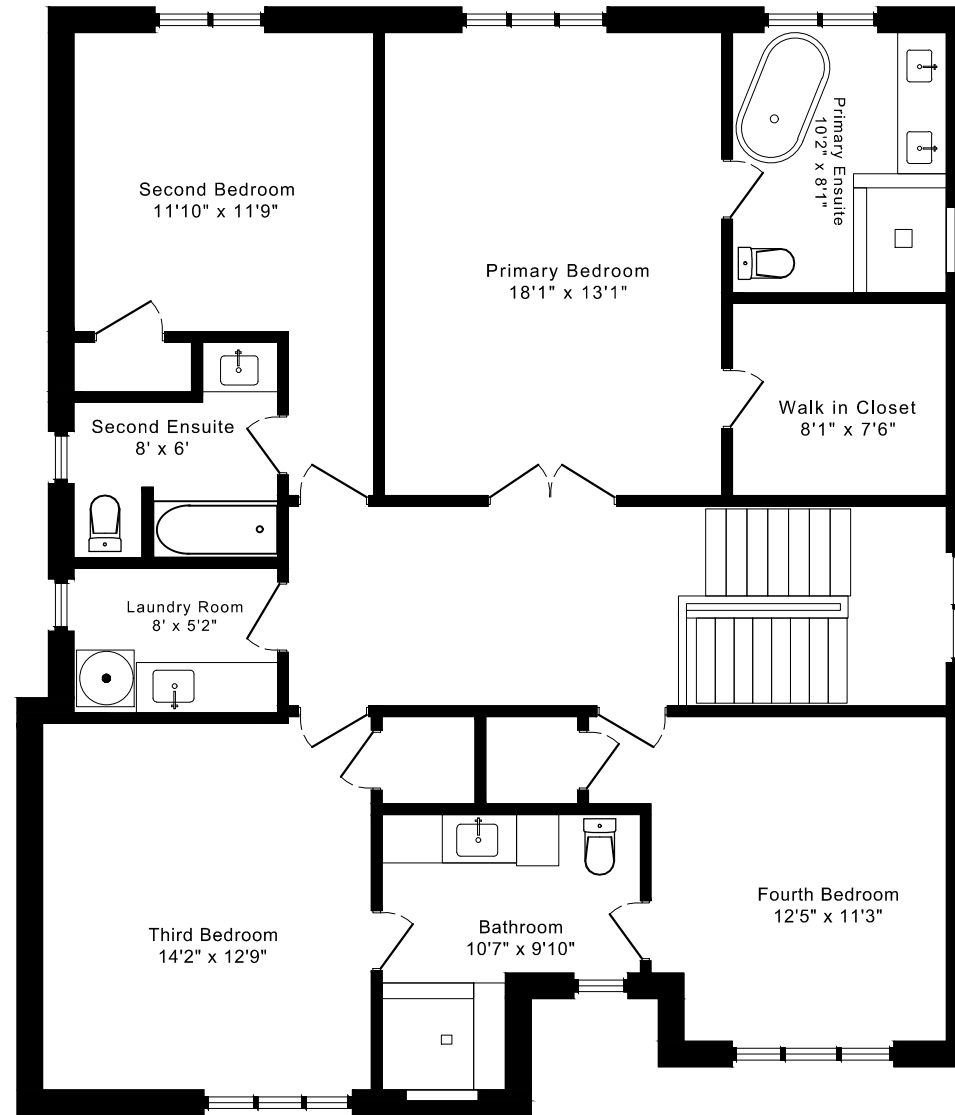


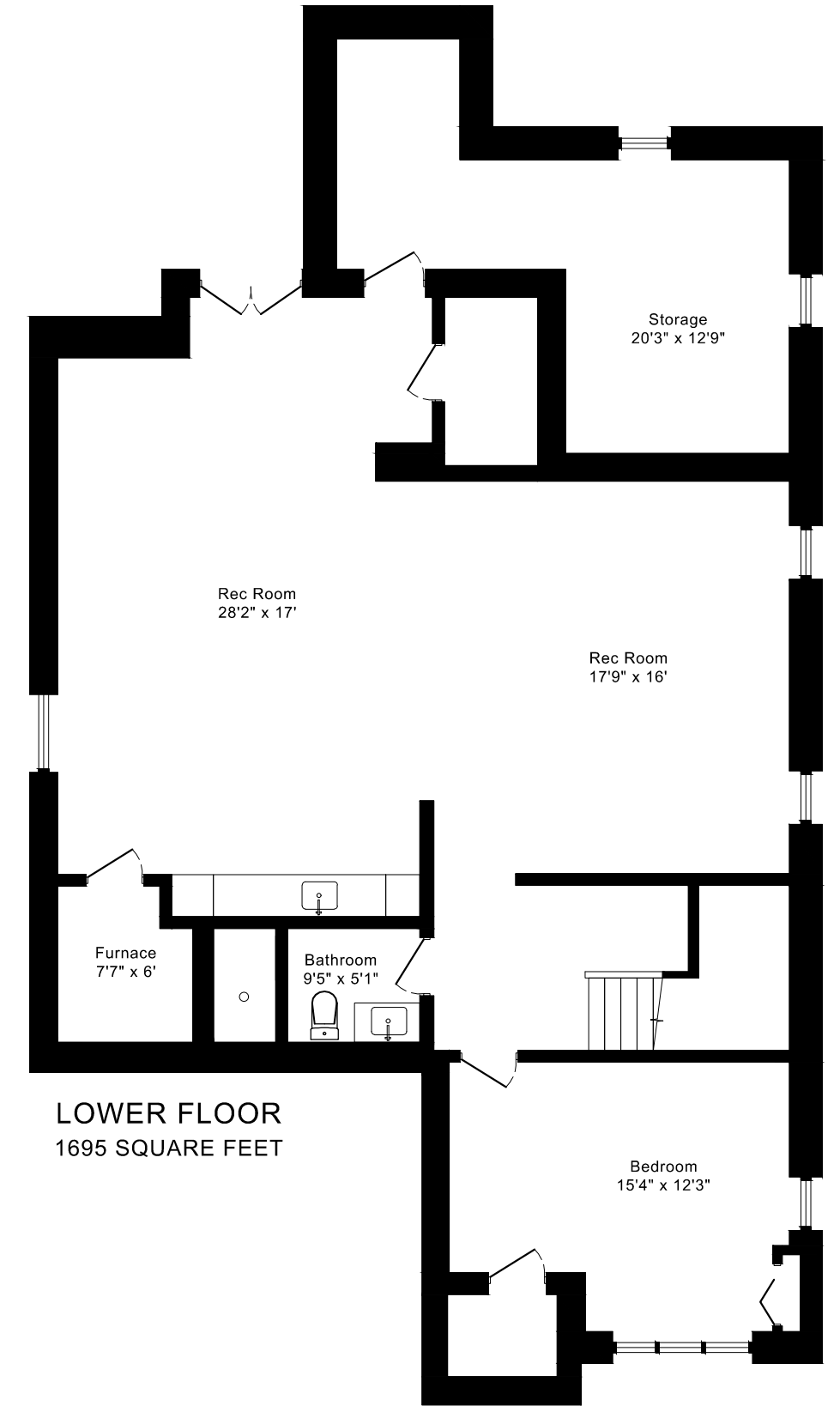
25 PRENNAN AVENUE FLOOR PLANS



MAIN FLOOR
1380 SQUARE FEET



SECOND FLOOR
1480 SQUARE FEET

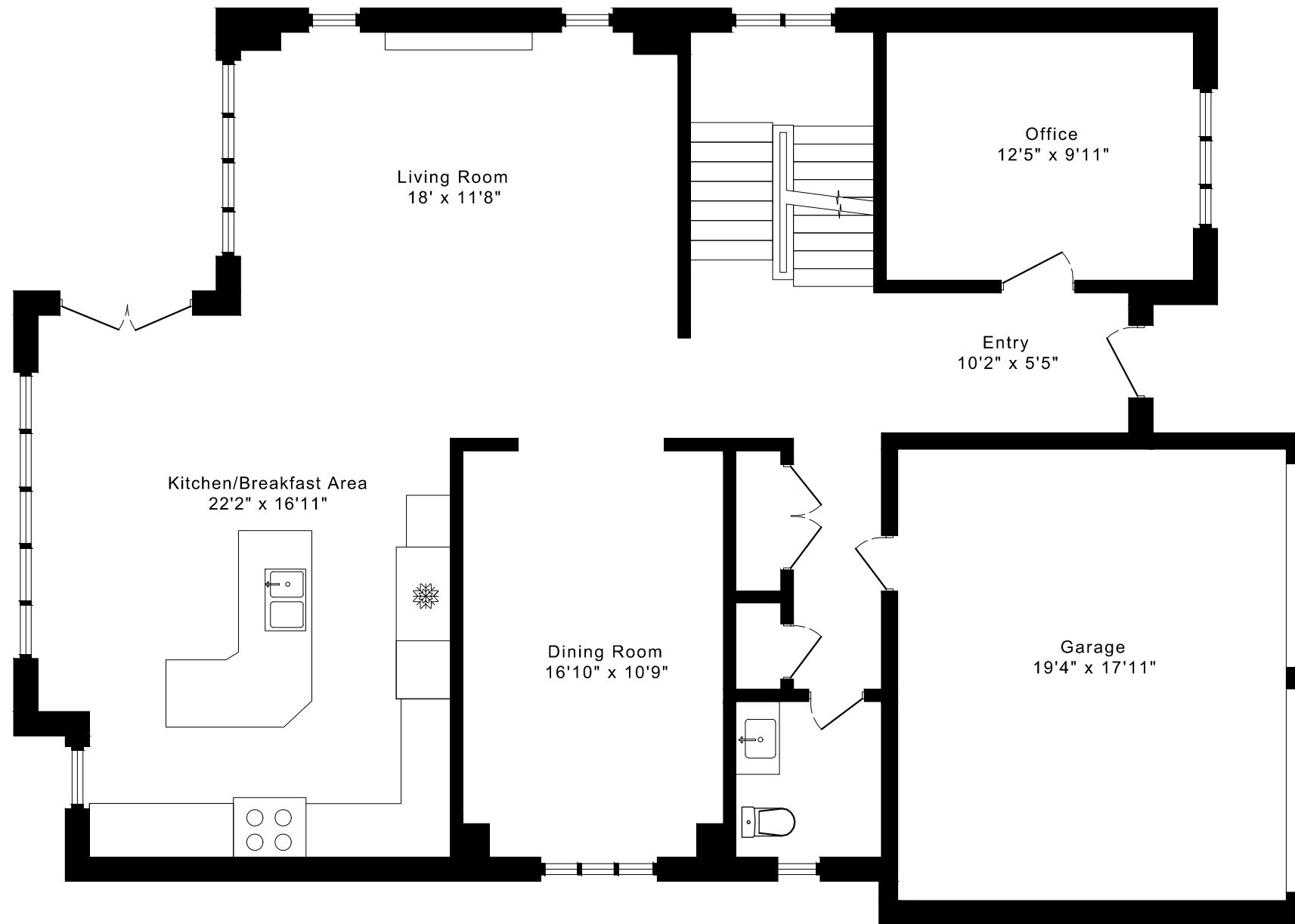


LOWER FLOOR
1695 SQUARE FEET

2860 sq ft + 1695 sq ft
BELOW GRADE

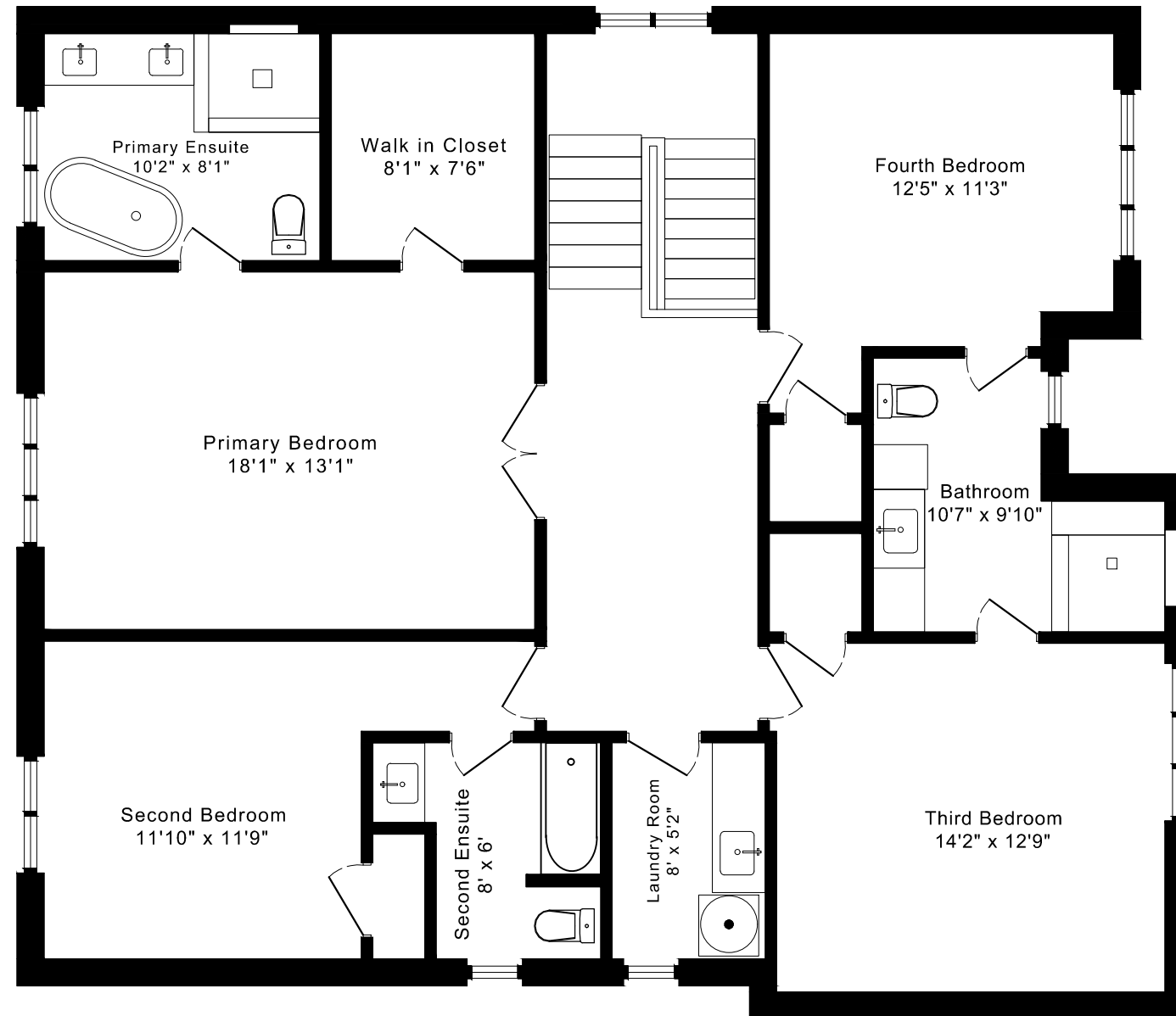
25 PRENNAN AVENUE FLOOR PLANS

MAIN FLOOR 1380 SQUARE FEET



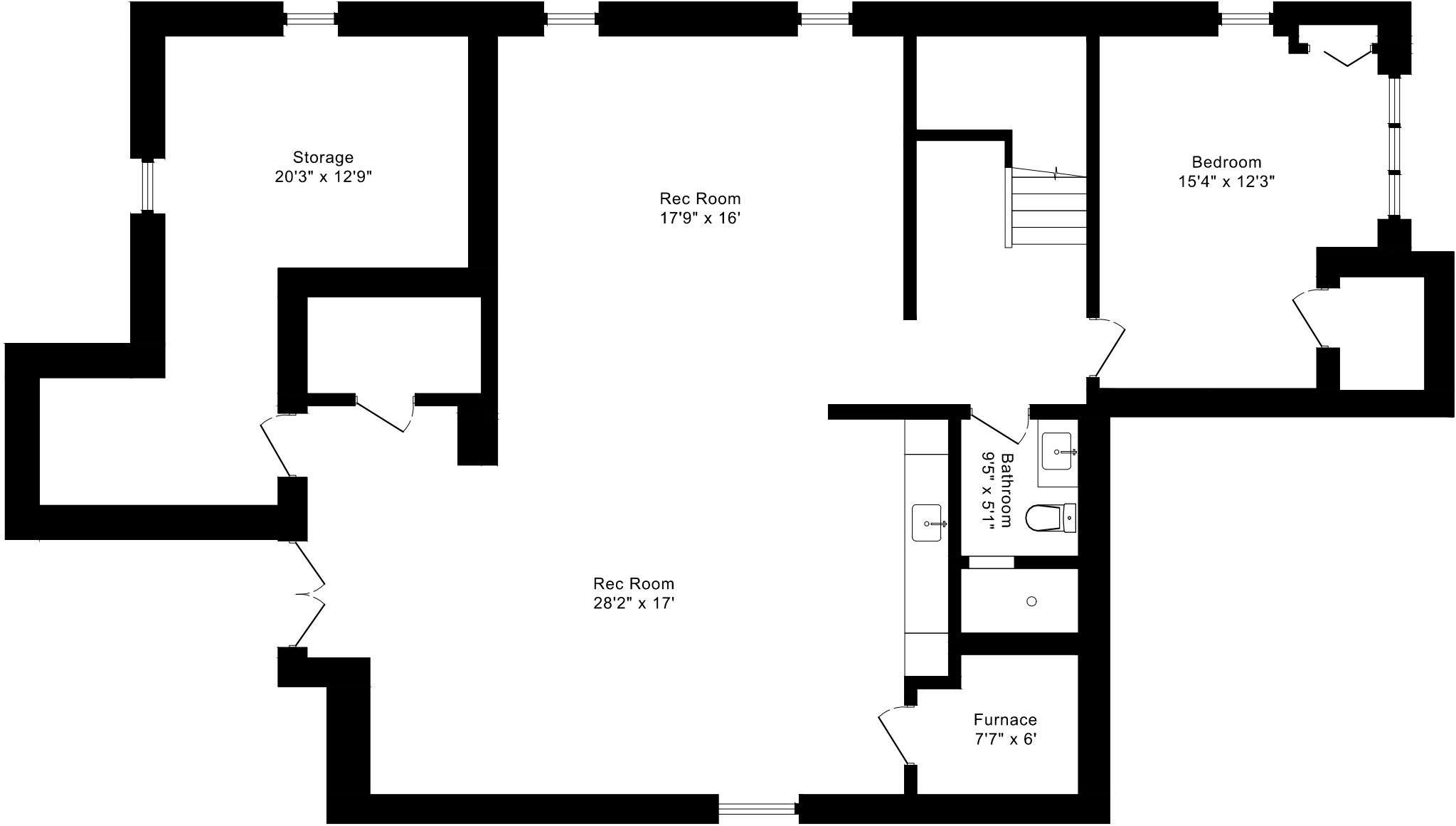
25 PRENNAN AVENUE FLOOR PLANS

SECOND FLOOR 1480 SQUARE FEET



25 PRENNAN AVENUE FLOOR PLANS

LOWER FLOOR 1695 SQUARE FEET



25 PENNAN AVENUE ROOM MEASUREMENTS

Floor	Room	Imperial						Metric [m]		
		Length		Width		Height		Length	Width	Height
		Feet	Inches	Feet	Inches	Feet	Inches			
Second	Primary Bedroom	18	1	13	1	9	0	5,51	3,99	2,74
	Primary Ensuite	10	2	8	1	9	0	3,10	2,46	2,74
	Walk in Closet	8	1	7	6	9	0	2,46	2,29	2,74
	Second Bedroom	11	10	11	9	9	0	3,61	3,58	2,74
	Second Ensuite	8	0	6	0	9	0	2,44	1,83	2,74
	Third Bedroom	14	2	12	9	9	0	4,32	3,89	2,74
	Fourth Bedroom	12	5	11	3	9	0	3,78	3,43	2,74
	Bathroom	10	7	9	10	9	0	3,23	3,00	2,74
	Laundry Room	8	0	5	2	9	0	2,44	1,57	2,74
Main	Entry	10	2	5	5	10	0	3,10	1,65	3,05
	Living Room	18	0	11	8	10	0	5,49	3,56	3,05
	Dining Room	16	10	10	9	10	0	5,13	3,28	3,05
	Kitchen/Breakfast Area	22	2	16	11	10	0	6,76	5,16	3,05
	Office	12	5	9	11	10	0	3,78	3,02	3,05
	Garage	19	4	17	11	10	0	5,89	5,46	3,05
Lower	Rec Room	28	2	17	0	7	7	8,59	5,18	2,31
	Rec Room	17	9	16	0	7	7	5,41	4,88	2,31
	Bedroom	15	4	12	3	7	7	4,67	3,73	2,31
	Bathroom	9	5	5	1	7	7	2,87	1,55	2,31
	Storage	20	3	12	9	7	7	6,17	3,89	2,31
	Furnace	7	7	6	0	7	7	2,31	1,83	2,31

The following is a disclaimer regarding the approximate nature of dimensions and floor areas listed in this document:

Disclaimer:

The dimensions and floor areas listed in this document are provided as an estimate only and are intended to be used for illustration purposes only. These measurements are not necessarily meant to be a perfect representation of the actual space.

Notes regarding measurement methods and accuracy:

The utilization of laser measurement technology during the 3D model capturing process at the location provides an accurate representation of floor plans, with a typical margin of error of 3-5%. For the most accurate and official measurement data, it is advised to consult official documents such as MPAC records, builder's pre-construction plans, or data from certified measurement companies.

Exterior wall thickness is included in the calculation of the overall square footage and is considered as a component of the footprint. The wall thickness measurement is obtained onsite whenever possible, or estimated in the event where obtaining onsite measurements is not possible, such as in the case of condominium buildings where wall thickness may vary throughout the building.