



570 Sinclair Terrace

South Orange, NJ



5



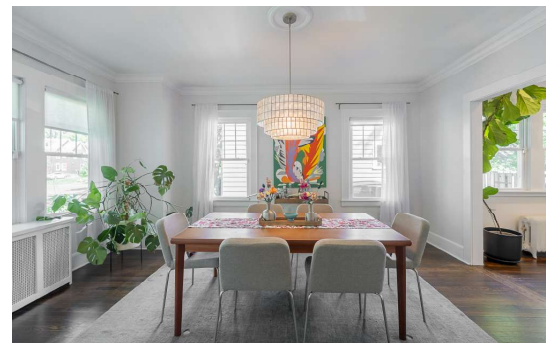
2.1

3,478 Sq. Ft.,

www.570sinclairterrace.com



VICTORIA
CARTER
GROUP





Tasteful Charm

Set on a beautifully landscaped property on a quiet street in a thriving residential community, this 10-room center hall colonial promises the very best in contemporary suburban living.

A warm entry vestibule with formal front entry, tile floor, coat closet and overhead light fixture welcomes you to this fine home.

Ahead, a French door opens to the deep center foyer where broad archways access the living room and dining room, a doorway opens to the rear vestibule and hardwood stairs run to the second level.

Framed by two sets of double French doors opening to the den, a classic wood-burning fireplace serves as the focal point of the front-to-back formal living room. Three large windows overlooking the front lawn combine with three additional windows on the rear wall to provide warm natural light throughout the day. A hardwood floor, crown moulding and recessed lighting finish the room.

With six large windows spanning the three exterior walls, the sunny den serves as a quiet first level retreat with hardwood floor, crown moulding, overhead lighting and decorative fireplace with tile hearth.

The formal dining room offers a hardwood floor, crown moulding, contemporary chandelier with ceiling medallion and five windows to the side and rear. An archway provides convenient access to the kitchen.





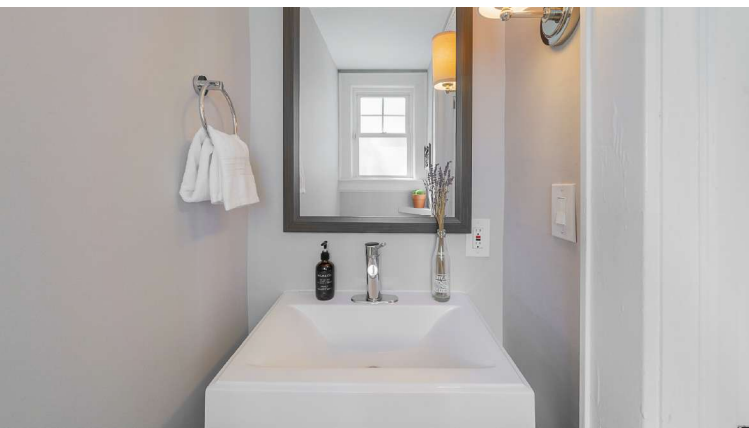
Functional Beauty

Certain to please even the most dedicated home chef, the eat-in kitchen features Shaker cabinets with granite counter tops, tile backsplash and built-in message and planning area. A peninsula counter, with pendant light fixture above, marks the transition to the breakfast area and provides additional space for storage and preparation. Appliances include a Samsung five-burner gas range, built-in Samsung microwave, Samsung dishwasher and Whirlpool refrigerator with cafe doors and water and ice dispenser. Three windows to the side and rear provide abundant natural light. A hardwood floor, recessed lighting and doorway leading to the rear vestibule complete the room.



Situated off the rear vestibule, the powder room is equipped with a tile floor, vanity with integrated sink, wall mirror and wall sconce.

Convenient to the kitchen and ideally suited for casually entertaining, a screened porch with lighted ceiling fan overlooks the fully fenced and beautifully landscaped back yard with stone patio.



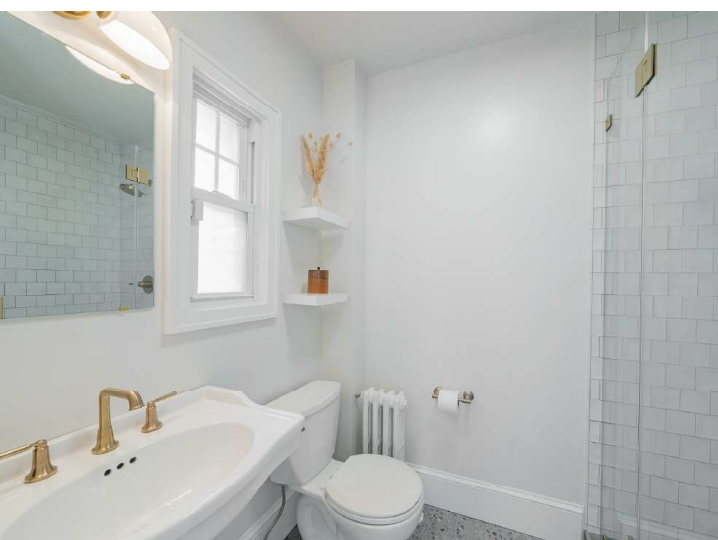


Personal Comfort

Situated on the second level, the primary suite is composed of a spacious bedroom and fully renovated private bath.

The bedroom features a hardwood floor, closet with built-in storage, crown moulding and overhead light fixture. Set in the front and rear walls, three large windows provide comfortable cross breezes.

The fully renovated en suite bath is equipped with a tile floor, glass-enclosed shower with tile surround, pedestal sink, medicine cabinet, wall mirror, light bar and built-in wall shelves.



Outside, the center foyer includes a hardwood floor, linen closet, overhead light fixture and landing with bay window (double-hung window, two sidelights, rear). A doorway opens to the stairs to the finished third level.

Individual Escapes

Each of the three additional bedrooms on the second level includes a hardwood floor, overhead lighting, windows on multiple walls and generous closet space.

The updated full hall bath is equipped with a tile floor, shower-over-tub with tile surround, floating vanity with inte-



grated sink, wall mirror, light bar and display shelving.

The fifth bedroom/great room is situated on the third level. Especially spacious and adaptable for a multiple of purposes, this room offers a hardwood floor, walk-in cedar closet, two overhead light fixtures, access to attic storage and four double-hung windows set in the two exterior walls.



Floor Plan



NOT TO SCALE: Floor plans are for illustration purposes only.
Room positions and dimensions are approximate and should be independently measured for accuracy.

Highlights

GENERAL

- Warm and inviting, 10-room, center hall Colonial in a thriving and diverse residential community
- Five bedrooms including primary suite
- Two full baths; one half-bath
- Gourmet eat-in kitchen
- Finished third level
- Detached two-car garage
- Wood-burning fireplace
- Neutral palette throughout
- Fully fenced back yard
- Rear stone patio
- Minutes from town, parks, schools, restaurants, shopping and Midtown Direct commuter train service into Manhattan

FIRST LEVEL

- Entry vestibule; formal front entry with sidelights; tile floor; coat closet; overhead light fixture; French door to center foyer
- Center foyer: hardwood floor; crown moulding; overhead light fixture; archways to living room and dining room; doorway to rear foyer; hardwood stairs to second level
- Living room (front to back); hardwood floor; wood-burning fireplace with tile hearth and traditional wooden mantel; crown moulding; recessed lighting; three double-hung windows, front; three double-hung window, rear, front; two sets of double French doors to den; archway to center foyer
- Den: hardwood floor; decorative fireplace with tile hearth; crown moulding; overhead light fixture; two double-hung windows, front; five double-hung windows, side; two double-hung windows, rear; two sets of double French doors to living room
- Dining room: hardwood floor; crown moulding; contemporary chandelier with ceiling medallion; three double-hung windows, front; two double-hung windows, side; archways to kitchen and center foyer
- Eat-in kitchen: hardwood floor; Shaker cabinets with peninsula counter, crown moulding and planning/message center;

granite counter tops; tile backsplash; Samsung five-burner gas range; built-in Samsung microwave; Samsung dishwasher; Whirlpool refrigerator with cafe doors and water and ice dispenser; undermounted stainless steel sink with garbage disposal; breakfast area; pendant light fixture; recessed lighting; two double-hung windows, side; double-hung window, rear; archway to dining room; doorway to rear vestibule

- Powder room: tile floor; vanity with integrated sink; wall mirror; wall sconce; double-hung window, rear
- Rear vestibule: hardwood floor; overhead light fixture; doorways to powder room, kitchen, center foyer, stairs to lower level and screened porch; egress to rear patio
- Screened rear porch: concrete floor; lighted ceiling fan; egress to rear patio

SECOND LEVEL

- Center foyer: hardwood floor; linen closet; overhead light fixture; landing with bay window (double-hung window, two sidelights, rear); door to stairs to third level
- Primary bedroom: hardwood floor; closet with built-in storage; crown moulding; overhead light fixture; double-hung window side; two double-hung windows, rear; access to en suite bath
- Private bath (primary bedroom): tile floor; glass-enclosed shower with tile surround; pedestal sink; medicine cabinet; wall mirror; light bar; built-in wall shelves; double-hung window, side
- Bedroom two: hardwood floor; closet; crown moulding; overhead light fixture; two double-hung windows, front; double-hung window, side
- Bedroom three: hardwood floor; closet; crown moulding; overhead light fixture; two double-hung windows, front; double-hung window, side
- Bedroom four: hardwood floor; closet with built-in storage; crown moulding; overhead light fixture; double-hung window

side; two double-hung windows, rear

- Full hall bath: tile floor; shower-over-tub with tile surround; floating vanity with integrated sink; wall mirror; light bar; display shelving; double-hung window, front

THIRD LEVEL

- Foyer: hardwood floor; overhead light fixture; two double-hung windows, rear
- Bedroom five/great room; hardwood floor; walk-in cedar closet; two overhead light fixtures; four double-hung windows, side

LOWER LEVEL

- Unfinished storage room; laundry area with General Electric washer and dryer and utility sink; overhead light fixtures; stairs to door with side egress; two casement windows, front; three casement windows, side

EXTERIOR

- Covered front entry
- Concrete front walkway
- Wood plank exterior
- Stone rear patio: access to rear vestibule and screened porch
- Fully fenced back yard
- Detached two-car garage
- Asphalt driveway
- Deep and level property
- Professional landscaping

IMPROVEMENTS

- Upgraded ADT home security system – 2025
- Upgraded fence – 2025
- Renovated primary full bath – 2023
- Renovated hall full bath – 2023
- Installed custom radiator covers – 2023

- Installed new exhaust fans in bathrooms – 2023
- Installed storage system in primary bedroom closet – 2023
- Installed electric service in garage – 2023
- Installed new refrigerator – 2022
- Installed new washing machine – 2022
- Replaced gutters – 2018
- Installed new roof – 2020
- Installed new patio and landscaping – 2020
- Screened porch – 2020
- Repaved driveway – 2020
- Installed new boiler – 2018-2019

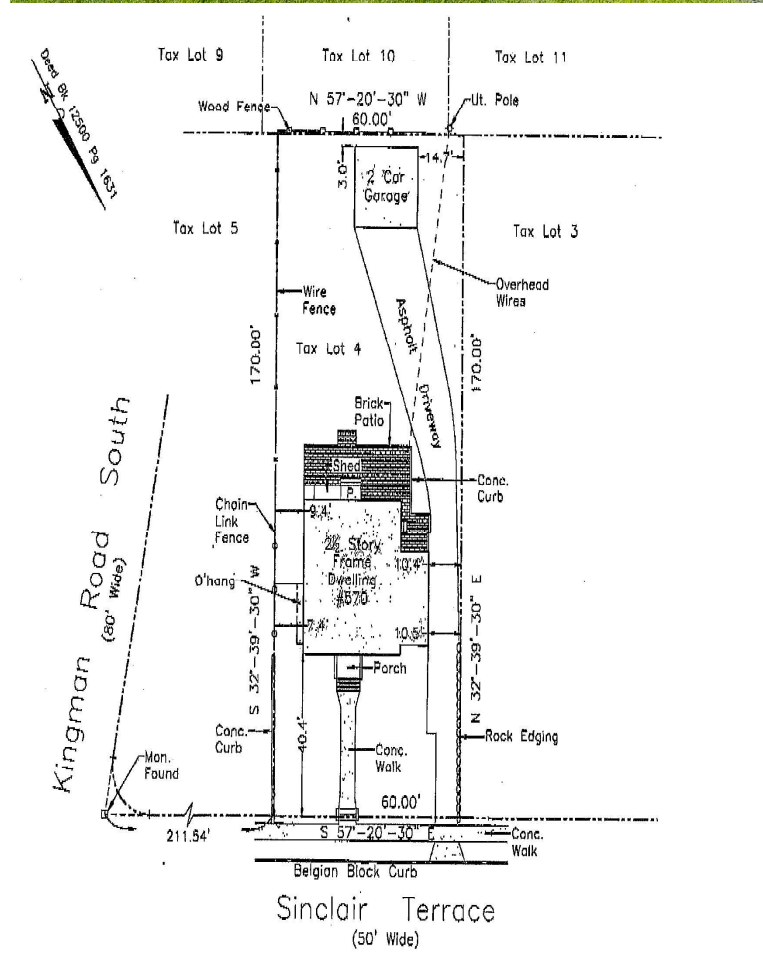
ASSESSMENTS

- Land: \$306,500
- Improvements: \$575,700
- Total: \$882,200
- 2025 taxes: \$22,796

COMMUNITY

• This lovely home is just minutes away from the South Orange train station and Meadowland Park with tennis courts, three swimming pools, handball and basketball courts, baseball fields, a community center and bike paths. In the summer, the park hosts weekly live concerts and family movie nights. Home to Seton Hall University and the South Orange Performing Arts Center, South Orange is a thriving and diverse community – with a vibrant business center including custom boutiques, distinctive specialty shops, fine galleries and gourmet restaurants – and all just 20 minutes from Newark's Liberty International Airport and close to major highways.





Victoria Carter Broker/Sales Associate

Cell: 973-220-3050

Email: Victoria@VictoriaCarter.com

www.victoriacarter.com

Weichert, Realtors • Short Hills Office



Weichert