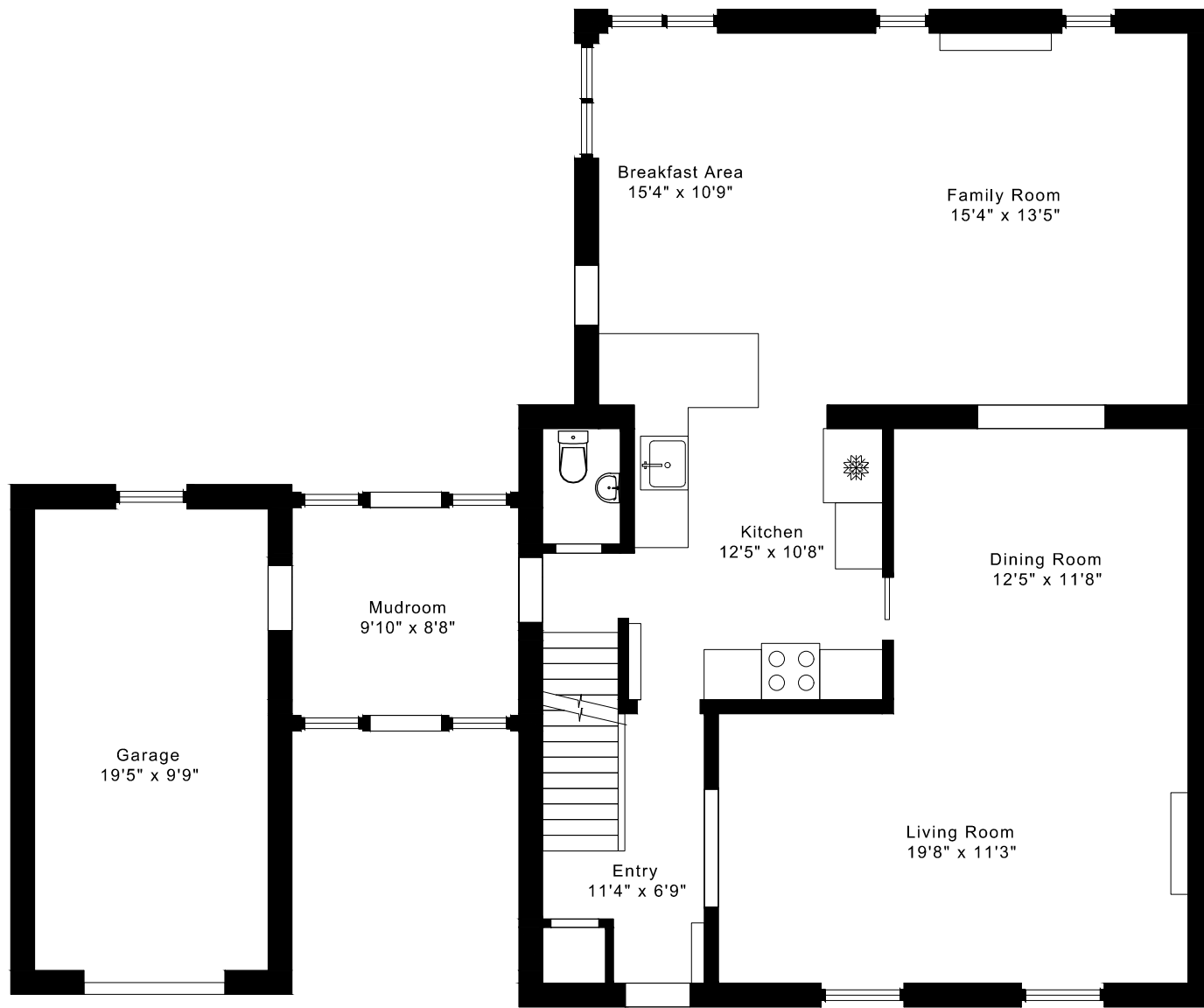
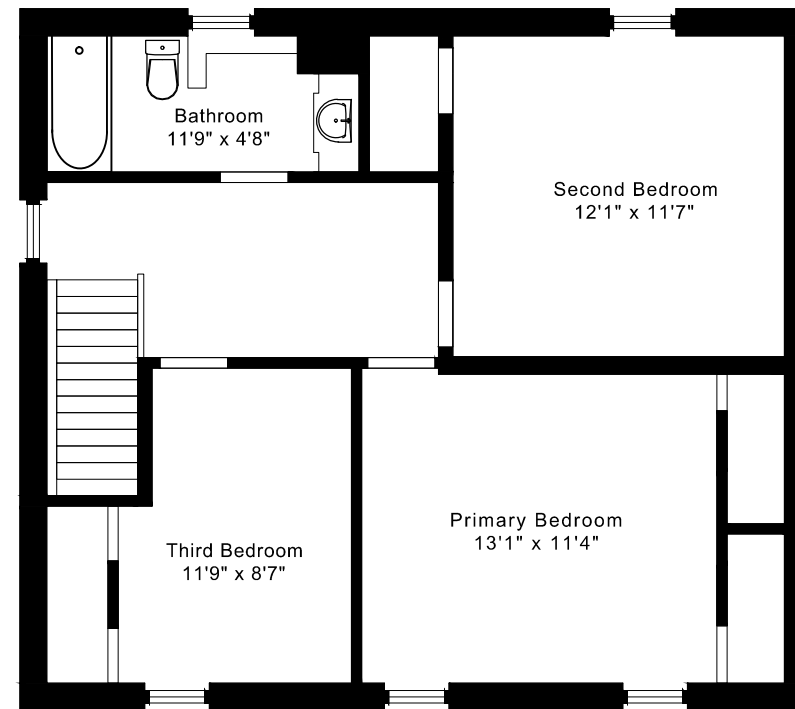


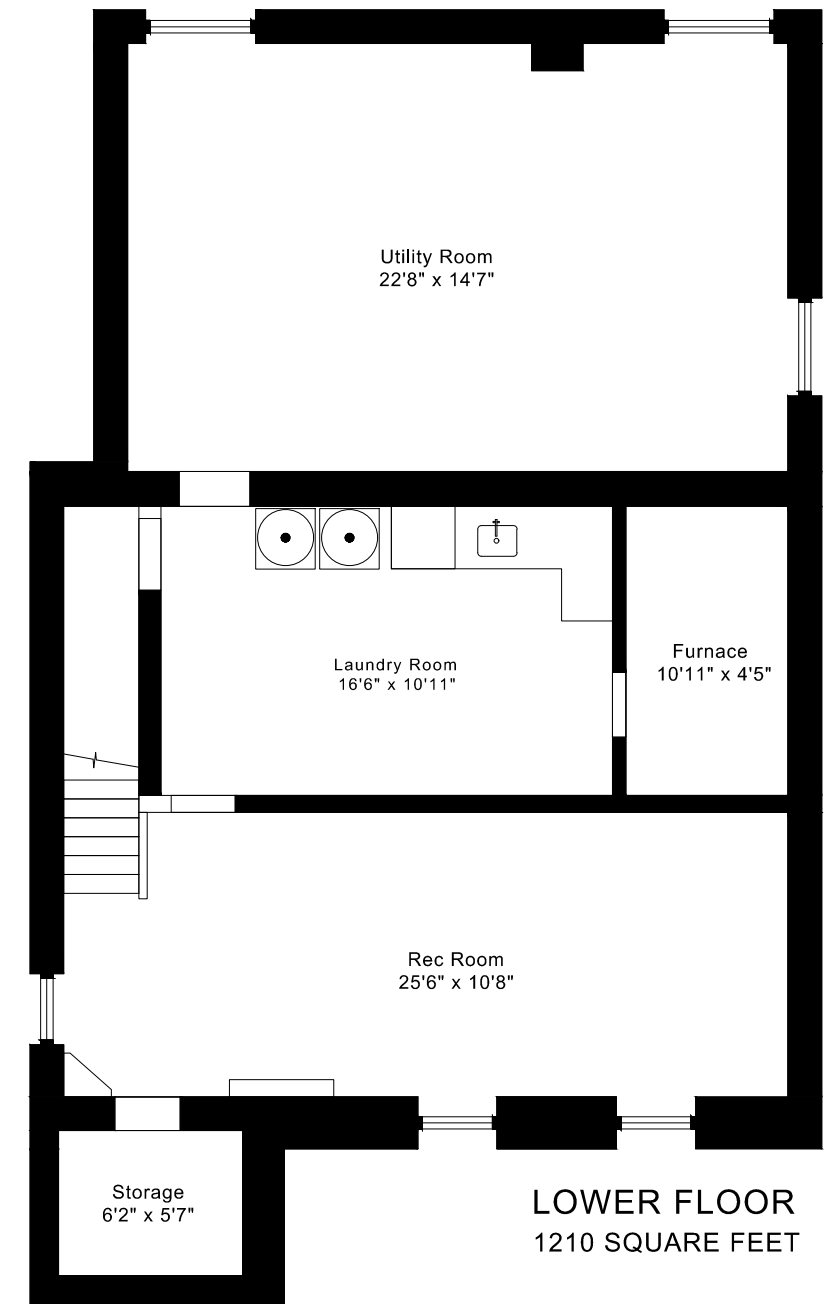
155 CENTRE STREET FLOOR PLANS



MAIN FLOOR
1250 SQUARE FEET



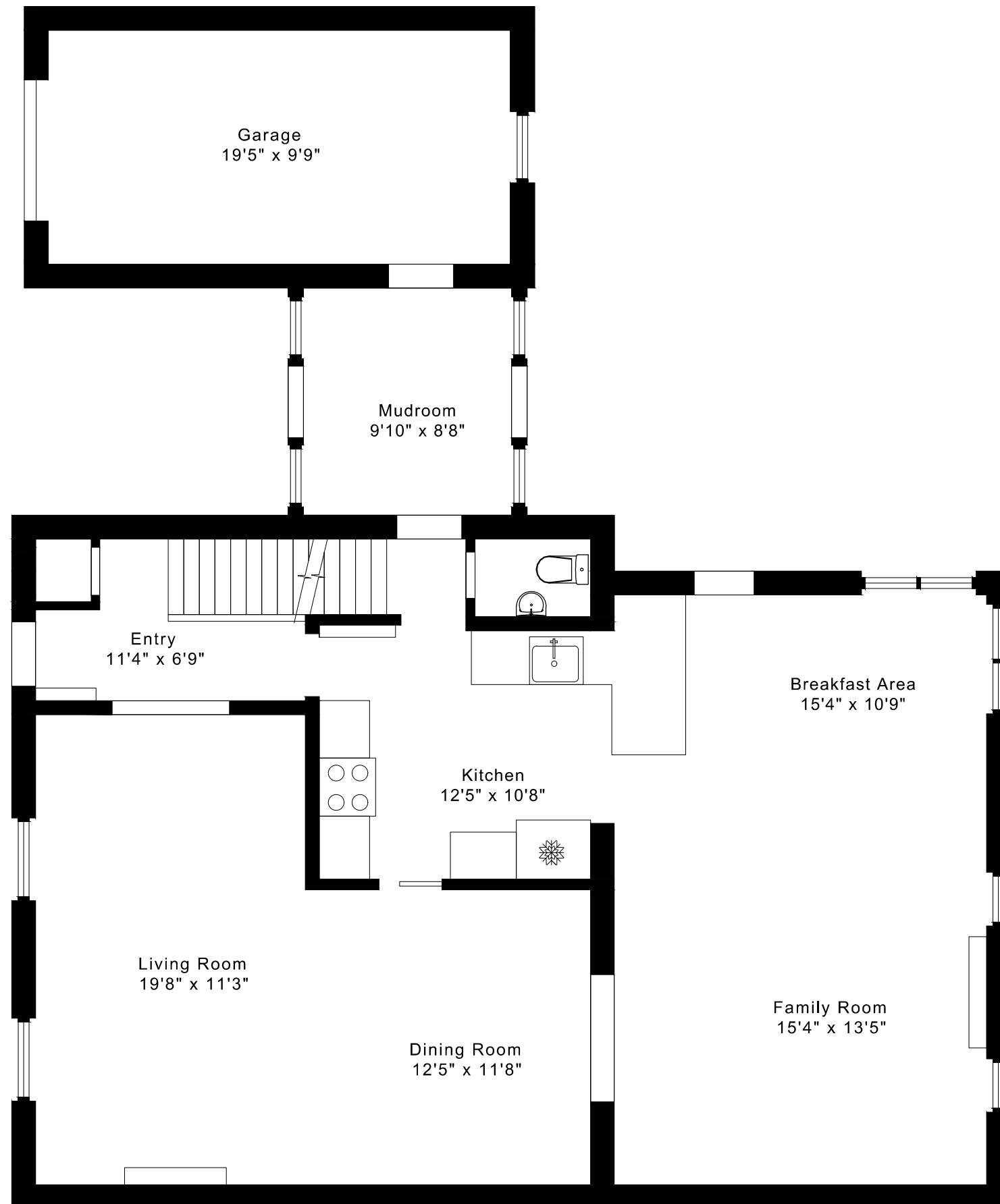
SECOND FLOOR
740 SQUARE FEET



LOWER FLOOR
1210 SQUARE FEET

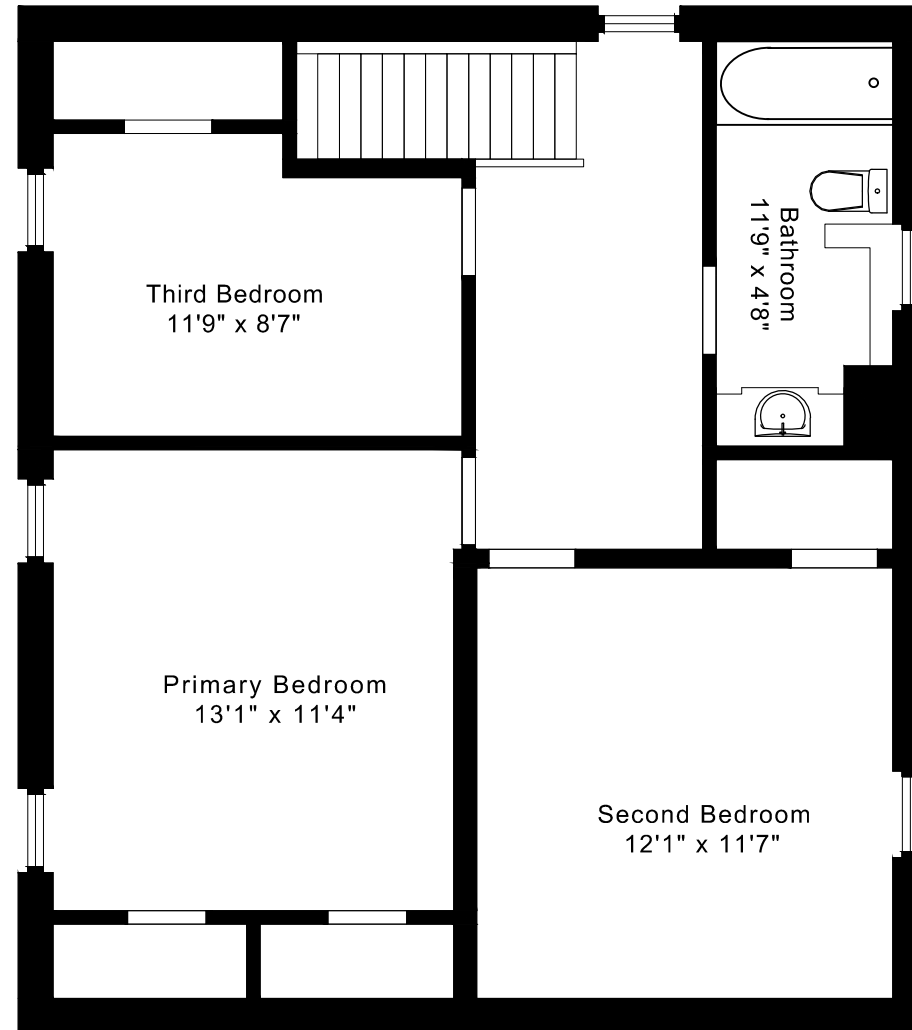
155 CENTRE STREET FLOOR PLANS

MAIN FLOOR 1250 SQUARE FEET



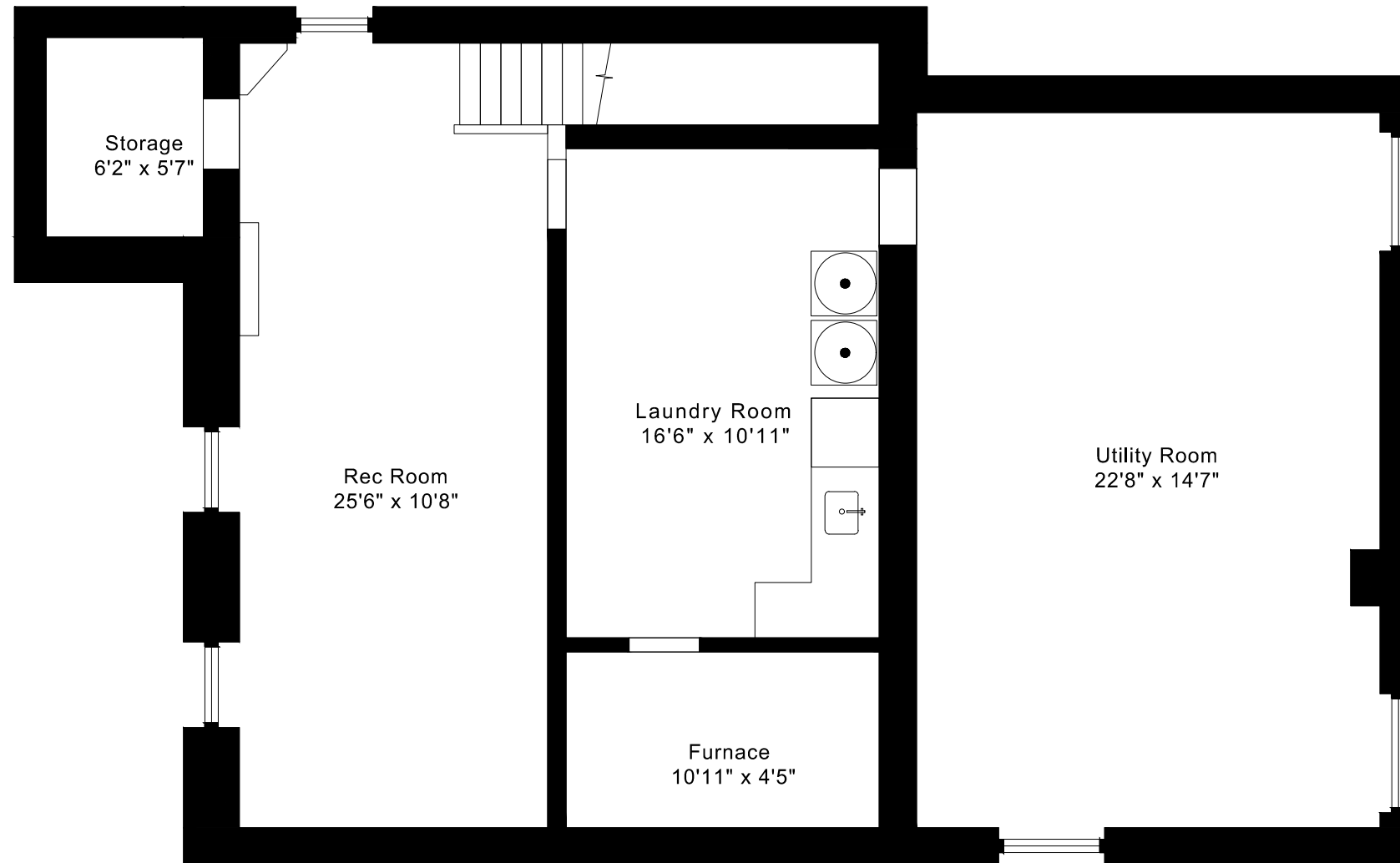
155 CENTRE STREET FLOOR PLANS

SECOND FLOOR 740 SQUARE FEET



155 CENTRE STREET FLOOR PLANS

LOWER FLOOR 1210 SQUARE FEET



155 CENTRE STREET WEST ROOM MEASUREMENTS

Floor	Room	Imperial						Metric [m]		
		Length		Width		Height		Length	Width	Height
		Feet	Inches	Feet	Inches	Feet	Inches			
Second	Primary Bedroom	13	1	11	4	7	8	3,99	3,45	2,34
	Second Bedroom	12	1	11	7	7	8	3,68	3,53	2,34
	Third Bedroom	11	9	8	7	7	8	3,58	2,62	2,34
	Bathroom	11	9	4	8	7	8	3,58	1,42	2,34
Main	Entry	11	4	6	9	8	5	3,45	2,06	2,57
	Living Room	19	8	11	3	8	5	5,99	3,43	2,57
	Dining Room	12	5	11	8	8	5	3,78	3,56	2,57
	Kitchen	12	5	10	8	8	5	3,78	3,25	2,57
	Breakfast Area	15	4	10	9	12	9	4,67	3,28	3,89
	Family Room	15	4	13	5	12	9	4,67	4,09	3,89
	Mudroom	9	10	8	8	7	9	3,00	2,64	2,36
	Garage	19	5	9	9	7	11	5,92	2,97	2,41
Lower	Rec Room	25	6	10	8	6	5	7,77	3,25	1,96
	Utility Room	22	8	14	7	6	5	6,91	4,45	1,96
	Laundry Room	16	6	10	11	6	5	5,03	3,33	1,96
	Storage	6	2	5	7	6	5	1,88	1,70	1,96
	Furnace	10	11	4	5	6	5	3,33	1,35	1,96

The following is a disclaimer regarding the approximate nature of dimensions and floor areas listed in this document:

Disclaimer:

The dimensions and floor areas listed in this document are provided as an estimate only and are intended to be used for illustration purposes only. These measurements are not necessarily meant to be a perfect representation of the actual space.

Notes regarding measurement methods and accuracy:

The utilization of laser measurement technology during the 3D model capturing process at the location provides an accurate representation of floor plans, with a typical margin of error of 3-5%. For the most accurate and official measurement data, it is advised to consult official documents such as MPAC records, builder's pre-construction plans, or data from certified measurement companies.

Exterior wall thickness is included in the calculation of the overall square footage and is considered as a component of the footprint. The wall thickness measurement is obtained onsite whenever possible, or estimated in the event where obtaining onsite measurements is not possible, such as in the case of condominium buildings where wall thickness may vary throughout the building.