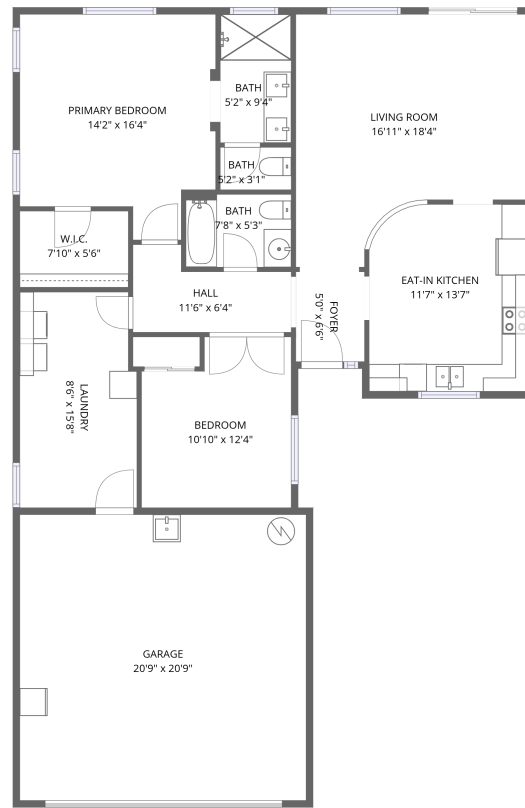


Home data report

2101 South Meridian Drive, Apache Junction, Pinal County, Arizona, United States, 85120, Lot 314



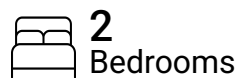
1st floor

Total Area: 1164 sq. ft

1st Floor: 1164 sq. ft

Excluded: Garage 430 sq. ft, Walls: 109 sq. ft

Property summary



Home data report

2101 South Meridian Drive, Apache Junction, Pinal County, Arizona, United States, 85120, Lot 314



Room dimensions

Floor 1

Total: 1164sqft Excluded: 430sqft

#		Dimensions	sqft	Counted as living area
1	Living Room	16'11" x 18'4"	309 sq. ft	Yes
2	Bath	5'2" x 3'1"	16 sq. ft	Yes
3	Bath	5'2" x 9'4"	48 sq. ft	Yes
4	W.I.C.	7'10" x 5'6"	44 sq. ft	Yes
5	Eat-in Kitchen	11'7" x 13'7"	157 sq. ft	Yes
6	Primary Bedroom	14'2" x 16'4"	232 sq. ft	Yes
7	Bedroom	10'10" x 12'4"	134 sq. ft	Yes
8	Bath	7'8" x 5'3"	40 sq. ft	Yes
9	Foyer	5'0" x 6'6"	32 sq. ft	Yes
10	Garage	20'9" x 20'9"	430 sq. ft	No
11	Laundry	8'6" x 15'8"	133 sq. ft	Yes

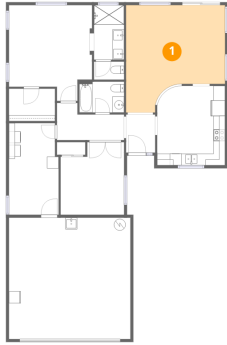
Home data report

**2101 South Meridian Drive, Apache Junction, Pinal County,
Arizona, United States, 85120, Lot 314**

#		Dimensions	sqft	Counted as living area
12	Hall	11'6" x 6'4"	73 sq. ft	Yes

2101 South Meridian Drive, Apache Junction, Pinal County,
Arizona, United States, 85120, Lot 314

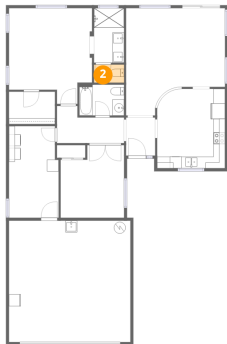
1 Floor 1 - Living Room



Dimensions: 16'11" x 18'4"
Area: 309 sq. ft
Counted as living area: Yes

Heated: Yes
Finished: Yes
Enclosed: Yes
Contiguous: Yes
Permitted: Yes
Wet space: No
Addition: No
Conversion: No

2 Floor 1 - Bath



Dimensions: 5'2" x 3'1"
Area: 16 sq. ft
Counted as living area: Yes

Heated: Yes
Finished: Yes
Enclosed: Yes
Contiguous: Yes
Permitted: Yes
Wet space: Yes
Addition: No
Conversion: No

2101 South Meridian Drive, Apache Junction, Pinal County, Arizona, United States, 85120, Lot 314

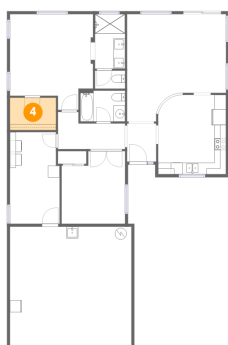
3 Floor 1 - Bath



Dimensions: 5'2" x 9'4"
Area: 48 sq. ft
Counted as living area: Yes

Heated: Yes
Finished: Yes
Enclosed: Yes
Contiguous: Yes
Permitted: Yes
Wet space: Yes
Addition: No
Conversion: No

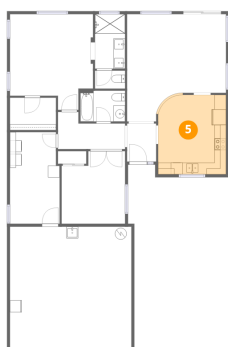
4 Floor 1 - W.I.C.



Dimensions: 7'10" x 5'6"
Area: 44 sq. ft
Counted as living area: Yes

Heated: Yes
Finished: Yes
Enclosed: Yes
Contiguous: Yes
Permitted: Yes
Wet space: No
Addition: No
Conversion: No

5 Floor 1 - Eat-in Kitchen

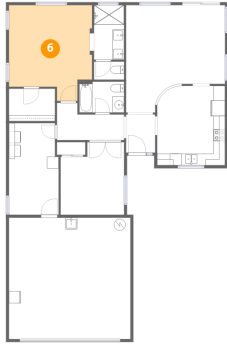


Dimensions: 11'7" x 13'7"
Area: 157 sq. ft
Counted as living area: Yes

Heated: Yes
Finished: Yes
Enclosed: Yes
Contiguous: Yes
Permitted: Yes
Wet space: No
Addition: No
Conversion: No

2101 South Meridian Drive, Apache Junction, Pinal County, Arizona, United States, 85120, Lot 314

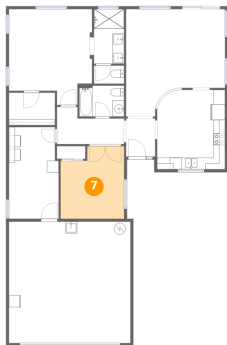
6 Floor 1 - Primary Bedroom



Dimensions: 14'2" x 16'4"
Area: 232 sq. ft
Counted as living area: Yes

Heated: Yes
Finished: Yes
Enclosed: Yes
Contiguous: Yes
Permitted: Yes
Wet space: No
Addition: No
Conversion: No

7 Floor 1 - Bedroom



Dimensions: 10'10" x 12'4"
Area: 134 sq. ft
Counted as living area: Yes

Heated: Yes
Finished: Yes
Enclosed: Yes
Contiguous: Yes
Permitted: Yes
Wet space: No
Addition: No
Conversion: No

8 Floor 1 - Bath

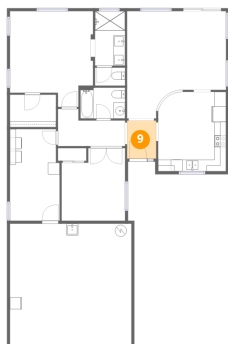


Dimensions: 7'8" x 5'3"
Area: 40 sq. ft
Counted as living area: Yes

Heated: Yes
Finished: Yes
Enclosed: Yes
Contiguous: Yes
Permitted: Yes
Wet space: Yes
Addition: No
Conversion: No

2101 South Meridian Drive, Apache Junction, Pinal County, Arizona, United States, 85120, Lot 314

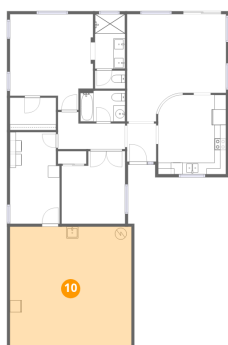
9 Floor 1 - Foyer



Dimensions: 5'0" x 6'6"
Area: 32 sq. ft
Counted as living area: Yes

Heated: Yes
Finished: Yes
Enclosed: Yes
Contiguous: Yes
Permitted: Yes
Wet space: No
Addition: No
Conversion: No

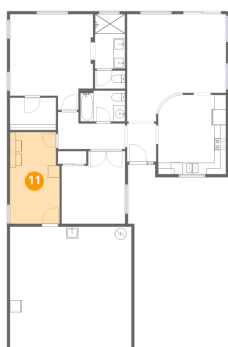
10 Floor 1 - Garage



Dimensions: 20'9" x 20'9"
Area: 430 sq. ft
Counted as living area: No

Heated: No
Finished: No
Enclosed: Yes
Contiguous: Yes
Permitted: Yes
Wet space: No
Addition: No
Conversion: No

11 Floor 1 - Laundry



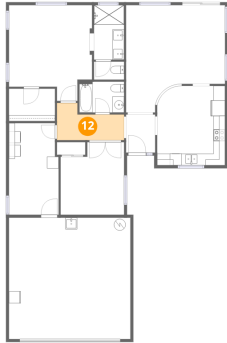
Dimensions: 8'6" x 15'8"
Area: 133 sq. ft
Counted as living area: Yes

Heated: Yes
Finished: Yes
Enclosed: Yes
Contiguous: Yes
Permitted: Yes
Wet space: No
Addition: No
Conversion: No

Home data report

2101 South Meridian Drive, Apache Junction, Pinal County,
Arizona, United States, 85120, Lot 314

12 Floor 1 - Hall



Dimensions: 11'6" x 6'4"
Area: 73 sq. ft
Counted as living area: Yes

Heated: Yes
Finished: Yes
Enclosed: Yes
Contiguous: Yes
Permitted: Yes
Wet space: No
Addition: No
Conversion: No