

904 Lockhurst Drive, Ponderosa, Simpsonville, Greenville County, South Carolina, United States, 29681

Gross Living Area: 2515 sq. ft

Level 1

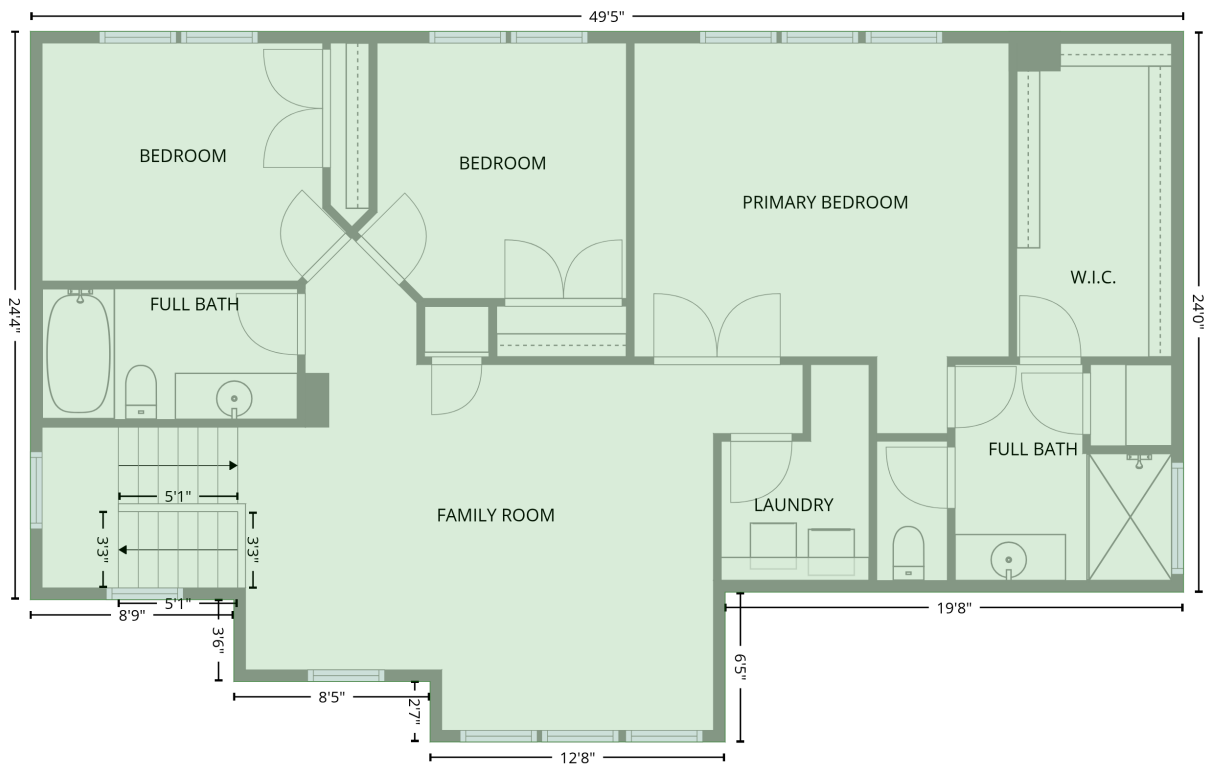
Space	Area (sq. ft)	Calculation <small>Coordinate Polygon Area Algorithm using inches</small>
GARAGE (Non-living area)	440	$-\left((616.1 + 616.1) * (305.1 - 580.3) + (616.1 + 374.3) * (580.3 - 580.3) + (374.3 + 374.3) * (580.3 - 465.3) + (374.3 + 380.3) * (465.3 - 465.3) + (380.3 + 380.3) * (465.3 - 352.4) + (380.3 + 428.3) * (352.4 - 352.4) + (428.3 + 428.3) * (352.4 - 305.1) + (428.3 + 616.1) * (305.1 - 305.1)\right) * 0.5 * 0.00694$
SCREENED PORCH (Non-living area)	103	$-\left((518.1 + 518.1) * (3.8 - 105.8) + (518.1 + 372.3) * (105.8 - 105.8) + (372.3 + 372.3) * (105.8 - 3.8) + (372.3 + 518.1) * (3.8 - 3.8)\right) * 0.5 * 0.00694$
PORCH (Non-living area)	107	$-\left((127.5 + 127.5) * (440.2 - 449.7) + (127.5 + 228.4) * (449.7 - 449.7) + (228.4 + 228.4) * (449.7 - 471.3) + (228.4 + 242.2) * (471.3 - 471.3) + (242.2 + 242.2) * (471.3 - 516.5) + (242.2 + 22.8) * (516.5 - 516.5) + (22.8 + 22.8) * (516.5 - 440.2) + (22.8 + 127.5) * (440.2 - 440.2)\right) * 0.5 * 0.00694$

904 Lockhurst Drive, Ponderosa, Simpsonville, Greenville County, South Carolina, United States, 29681

Gross Living Area: 2515 sq. ft

Level 2

2nd floor
[AREA: 1304]



Space	Area (sq. ft)	Calculation <small>Coordinate Polygon Area Algorithm using inches</small>
2nd floor (Living area)	1304	$-((616.1 + 616.1) * (105.8 - 394.2) + (616.1 + 380.3) * (394.2 - 394.2) + (380.3 + 380.3) * (394.2 - 471.3) + (380.3 + 228.4) * (471.3 - 471.3) + (228.4 + 228.4) * (471.3 - 440.2) + (228.4 + 127.5) * (440.2 - 440.2) + (127.5 + 127.5) * (440.2 - 398) + (127.5 + 22.8) * (398 - 398) + (22.8 + 22.8) * (398 - 105.8) + (22.8 + 616.1) * (105.8 - 105.8)) * 0.5 * 0.00694$