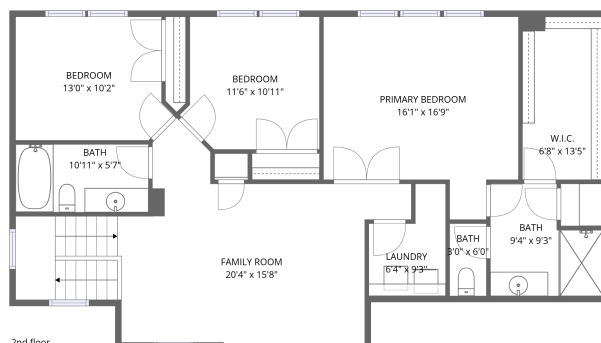
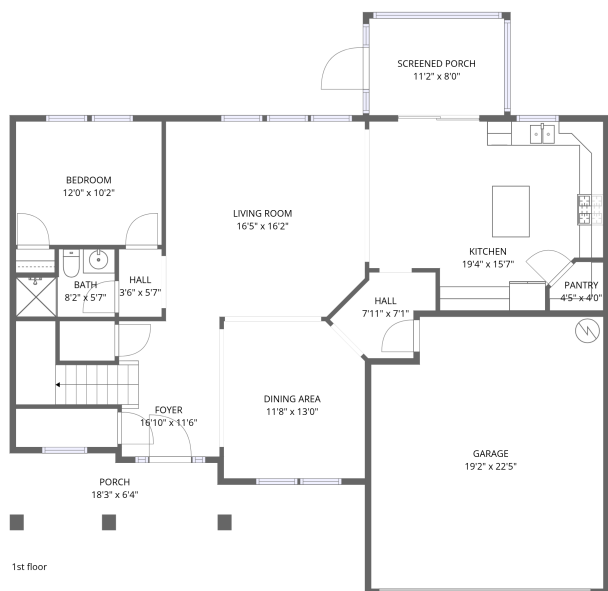


## Home data report

904 Lockhurst Drive, Ponderosa, Simpsonville, Greenville  
County, South Carolina, United States, 29681



**Total Area: 2359 sq. ft**

1st Floor: 1133 sq. ft, 2nd Floor: 1226 sq. ft

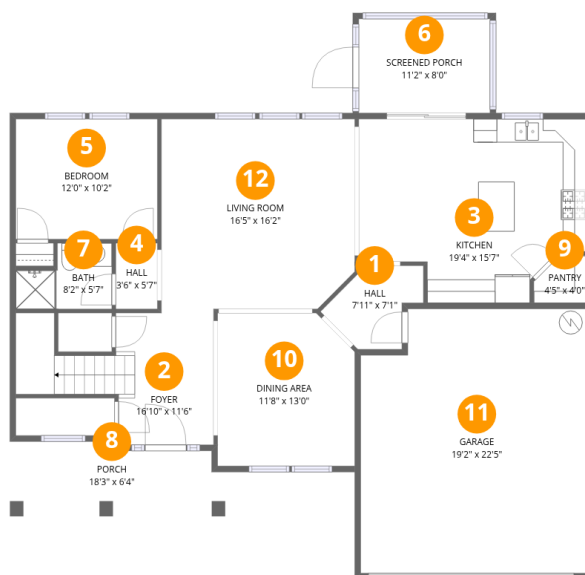
Excluded: Garage 414 sq. ft, Screened porch 89 sq. ft, Porch 107 sq. ft, Walls: 196 sq. ft

## Property summary



## Home data report

904 Lockhurst Drive, Ponderosa, Simpsonville, Greenville County, South Carolina, United States, 29681



## Room dimensions

Floor 1

Total:1133sqft Excluded: 610sqft

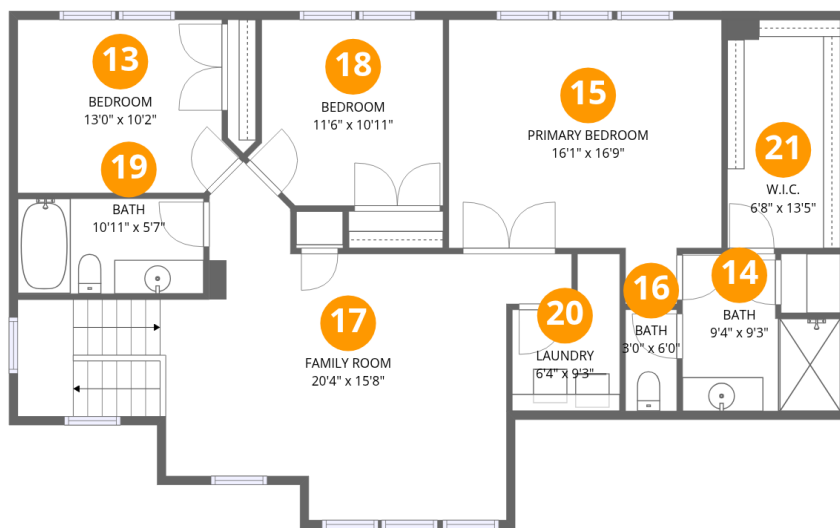
#		Dimensions	sqft	Counted as living area
1	Hall	7'11" x 7'1"	56 sq. ft	Yes
2	Foyer	16'10" x 11'6"	194 sq. ft	Yes
3	Kitchen	19'4" x 15'7"	302 sq. ft	Yes
4	Hall	3'6" x 5'7"	20 sq. ft	Yes
5	Bedroom	12'0" x 10'2"	122 sq. ft	Yes
6	Screened Porch	11'2" x 8'0"	89 sq. ft	No
7	Bath	8'2" x 5'7"	46 sq. ft	Yes
8	Porch	18'3" x 6'4"	116 sq. ft	No
9	Pantry	4'5" x 4'0"	18 sq. ft	Yes
10	Dining Area	11'8" x 13'0"	151 sq. ft	Yes
11	Garage	19'2" x 22'5"	430 sq. ft	No

Home data report

**904 Lockhurst Drive, Ponderosa, Simpsonville, Greenville  
County, South Carolina, United States, 29681**

#		Dimensions	sqft	Counted as living area
12	Living Room	16'5" x 16'2"	265 sq. ft	Yes

904 Lockhurst Drive, Ponderosa, Simpsonville, Greenville County, South Carolina, United States, 29681



## Room dimensions

Floor 2

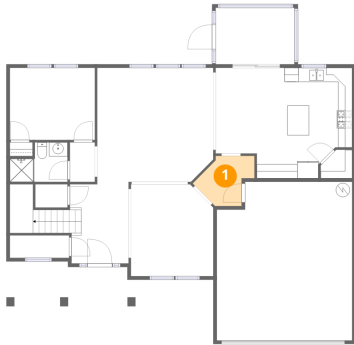
Total:1226sqft Excluded: 0sqft

#		Dimensions	sqft	Counted as living area
13	Bedroom	13'0" x 10'2"	133 sq. ft	Yes
14	Bath	9'4" x 9'3"	86 sq. ft	Yes
15	Primary Bedroom	16'1" x 16'9"	269 sq. ft	Yes
16	Bath	3'0" x 6'0"	18 sq. ft	Yes
17	Family Room	20'4" x 15'8"	318 sq. ft	Yes
18	Bedroom	11'6" x 10'11"	126 sq. ft	Yes
19	Bath	10'11" x 5'7"	61 sq. ft	Yes
20	Laundry	6'4" x 9'3"	59 sq. ft	Yes
21	W.I.C.	6'8" x 13'5"	89 sq. ft	Yes

904 Lockhurst Drive, Ponderosa, Simpsonville, Greenville  
County, South Carolina, United States, 29681

**1** Floor 1 - Hall

---

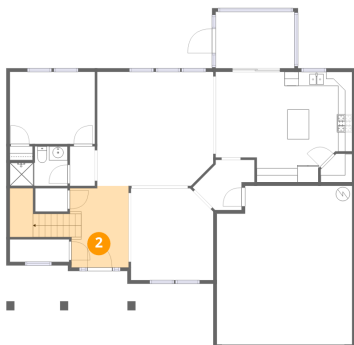


Dimensions: 7'11" x 7'1"  
Area: 56 sq. ft  
Counted as living area: Yes

Heated: Yes  
Finished: Yes  
Enclosed: Yes  
Contiguous: Yes  
Permitted: Yes  
Wet space: No  
Addition: No  
Conversion: No

**2** Floor 1 - Foyer

---

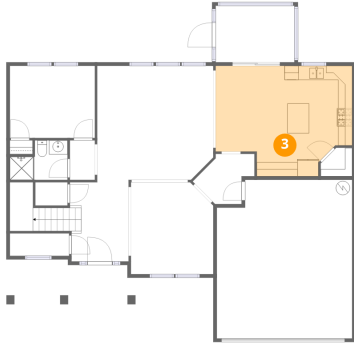


Dimensions: 16'10" x 11'6"  
Area: 194 sq. ft  
Counted as living area: Yes

Heated: Yes  
Finished: Yes  
Enclosed: Yes  
Contiguous: Yes  
Permitted: Yes  
Wet space: No  
Addition: No  
Conversion: No

904 Lockhurst Drive, Ponderosa, Simpsonville, Greenville  
County, South Carolina, United States, 29681

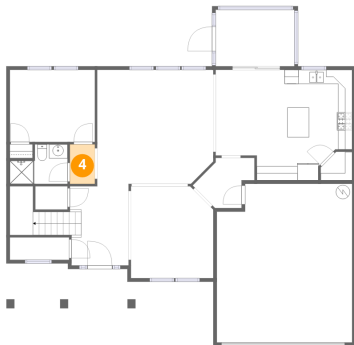
**3** Floor 1 - Kitchen



Dimensions: 19'4" x 15'7"  
Area: 302 sq. ft  
Counted as living area: Yes

Heated: Yes  
Finished: Yes  
Enclosed: Yes  
Contiguous: Yes  
Permitted: Yes  
Wet space: No  
Addition: No  
Conversion: No

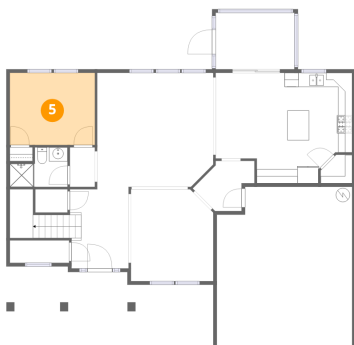
**4** Floor 1 - Hall



Dimensions: 3'6" x 5'7"  
Area: 20 sq. ft  
Counted as living area: Yes

Heated: Yes  
Finished: Yes  
Enclosed: Yes  
Contiguous: Yes  
Permitted: Yes  
Wet space: No  
Addition: No  
Conversion: No

**5** Floor 1 - Bedroom

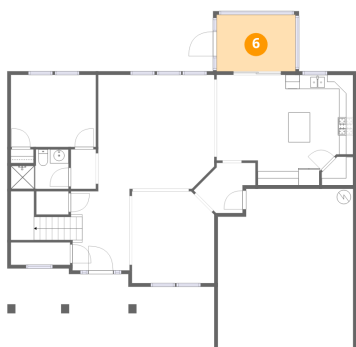


Dimensions: 12'0" x 10'2"  
Area: 122 sq. ft  
Counted as living area: Yes

Heated: Yes  
Finished: Yes  
Enclosed: Yes  
Contiguous: Yes  
Permitted: Yes  
Wet space: No  
Addition: No  
Conversion: No

904 Lockhurst Drive, Ponderosa, Simpsonville, Greenville  
County, South Carolina, United States, 29681

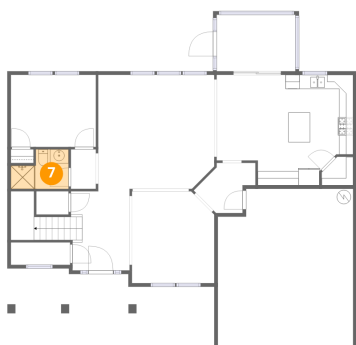
**6** Floor 1 - Screened Porch



Dimensions: 11'2" x 8'0"  
Area: 89 sq. ft  
Counted as living area: No

Heated: No  
Finished: No  
Enclosed: No  
Contiguous: Yes  
Permitted: Yes  
Wet space: No  
Addition: No  
Conversion: No

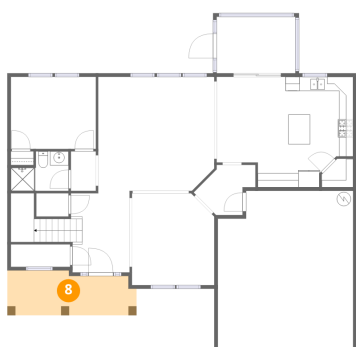
**7** Floor 1 - Bath



Dimensions: 8'2" x 5'7"  
Area: 46 sq. ft  
Counted as living area: Yes

Heated: Yes  
Finished: Yes  
Enclosed: Yes  
Contiguous: Yes  
Permitted: Yes  
Wet space: Yes  
Addition: No  
Conversion: No

**8** Floor 1 - Porch

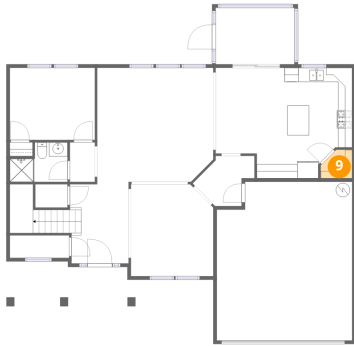


Dimensions: 18'3" x 6'4"  
Area: 116 sq. ft  
Counted as living area: No

Heated: No  
Finished: No  
Enclosed: No  
Contiguous: Yes  
Permitted: Yes  
Wet space: No  
Addition: No  
Conversion: No

904 Lockhurst Drive, Ponderosa, Simpsonville, Greenville  
County, South Carolina, United States, 29681

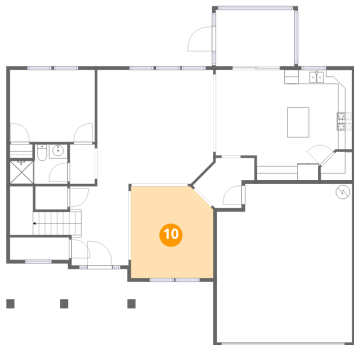
9 Floor 1 - Pantry



Dimensions: 4'5" x 4'0"  
Area: 18 sq. ft  
Counted as living area: Yes

Heated: Yes  
Finished: Yes  
Enclosed: Yes  
Contiguous: Yes  
Permitted: Yes  
Wet space: No  
Addition: No  
Conversion: No

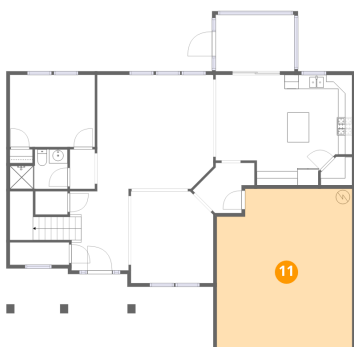
10 Floor 1 - Dining Area



Dimensions: 11'8" x 13'0"  
Area: 151 sq. ft  
Counted as living area: Yes

Heated: Yes  
Finished: Yes  
Enclosed: Yes  
Contiguous: Yes  
Permitted: Yes  
Wet space: No  
Addition: No  
Conversion: No

11 Floor 1 - Garage

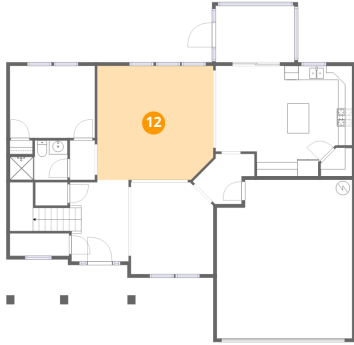


Dimensions: 19'2" x 22'5"  
Area: 430 sq. ft  
Counted as living area: No

Heated: No  
Finished: No  
Enclosed: Yes  
Contiguous: Yes  
Permitted: Yes  
Wet space: No  
Addition: No  
Conversion: No

904 Lockhurst Drive, Ponderosa, Simpsonville, Greenville  
County, South Carolina, United States, 29681

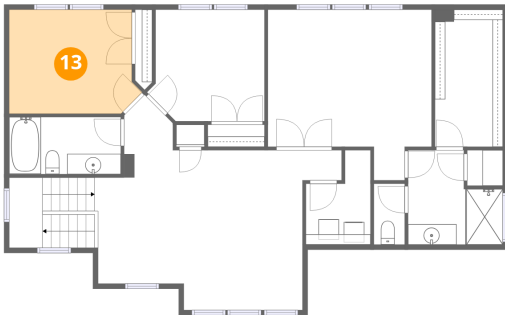
**12** Floor 1 - Living Room



Dimensions: 16'5" x 16'2"  
Area: 265 sq. ft  
Counted as living area: Yes

Heated: Yes  
Finished: Yes  
Enclosed: Yes  
Contiguous: Yes  
Permitted: Yes  
Wet space: No  
Addition: No  
Conversion: No

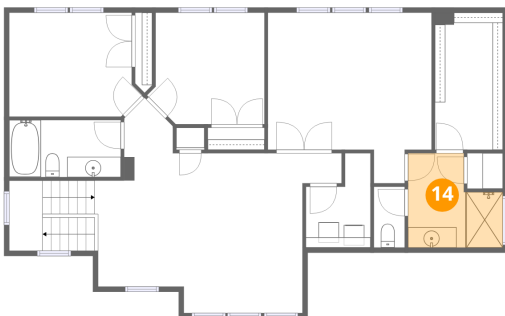
**13** Floor 2 - Bedroom



Dimensions: 13'0" x 10'2"  
Area: 133 sq. ft  
Counted as living area: Yes

Heated: Yes  
Finished: Yes  
Enclosed: Yes  
Contiguous: Yes  
Permitted: Yes  
Wet space: No  
Addition: No  
Conversion: No

**14** Floor 2 - Bath

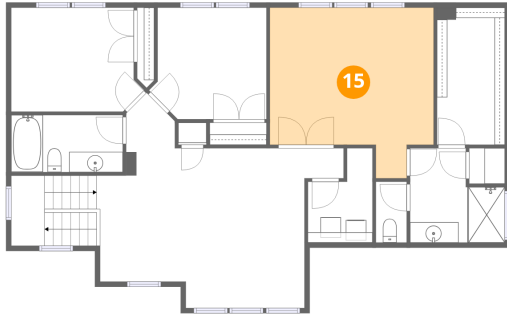


Dimensions: 9'4" x 9'3"  
Area: 86 sq. ft  
Counted as living area: Yes

Heated: Yes  
Finished: Yes  
Enclosed: Yes  
Contiguous: Yes  
Permitted: Yes  
Wet space: Yes  
Addition: No  
Conversion: No

904 Lockhurst Drive, Ponderosa, Simpsonville, Greenville  
County, South Carolina, United States, 29681

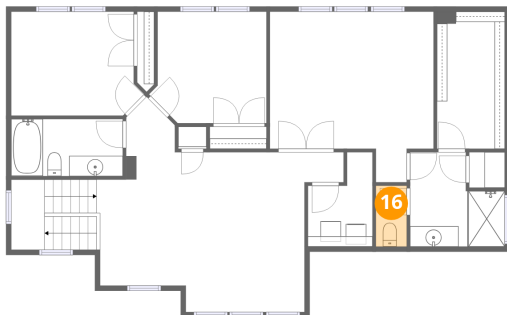
**15** Floor 2 - Primary Bedroom



Dimensions: 16'1" x 16'9"  
Area: 269 sq. ft  
Counted as living area: Yes

Heated: Yes  
Finished: Yes  
Enclosed: Yes  
Contiguous: Yes  
Permitted: Yes  
Wet space: No  
Addition: No  
Conversion: No

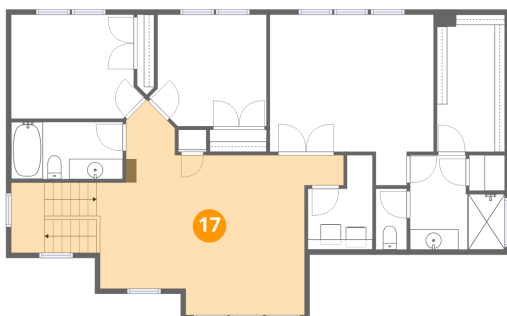
**16** Floor 2 - Bath



Dimensions: 3'0" x 6'0"  
Area: 18 sq. ft  
Counted as living area: Yes

Heated: Yes  
Finished: Yes  
Enclosed: Yes  
Contiguous: Yes  
Permitted: Yes  
Wet space: No  
Addition: No  
Conversion: No

**17** Floor 2 - Family Room



Dimensions: 20'4" x 15'8"  
Area: 318 sq. ft  
Counted as living area: Yes

Heated: Yes  
Finished: Yes  
Enclosed: Yes  
Contiguous: Yes  
Permitted: Yes  
Wet space: No  
Addition: No  
Conversion: No

904 Lockhurst Drive, Ponderosa, Simpsonville, Greenville  
County, South Carolina, United States, 29681

**18** Floor 2 - Bedroom



Dimensions: 11'6" x 10'11"  
Area: 126 sq. ft  
Counted as living area: Yes

Heated: Yes  
Finished: Yes  
Enclosed: Yes  
Contiguous: Yes  
Permitted: Yes  
Wet space: No  
Addition: No  
Conversion: No

**19** Floor 2 - Bath



Dimensions: 10'11" x 5'7"  
Area: 61 sq. ft  
Counted as living area: Yes

Heated: Yes  
Finished: Yes  
Enclosed: Yes  
Contiguous: Yes  
Permitted: Yes  
Wet space: Yes  
Addition: No  
Conversion: No

**20** Floor 2 - Laundry

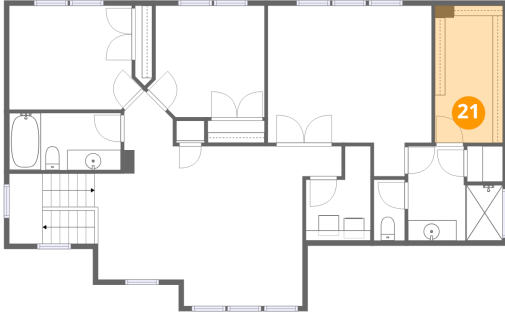


Dimensions: 6'4" x 9'3"  
Area: 59 sq. ft  
Counted as living area: Yes

Heated: Yes  
Finished: Yes  
Enclosed: Yes  
Contiguous: Yes  
Permitted: Yes  
Wet space: No  
Addition: No  
Conversion: No

904 Lockhurst Drive, Ponderosa, Simpsonville, Greenville  
County, South Carolina, United States, 29681

**21** Floor 2 - W.I.C.



Dimensions: 6'8" x 13'5"  
Area: 89 sq. ft  
Counted as living area: Yes

Heated: Yes  
Finished: Yes  
Enclosed: Yes  
Contiguous: Yes  
Permitted: Yes  
Wet space: No  
Addition: No  
Conversion: No