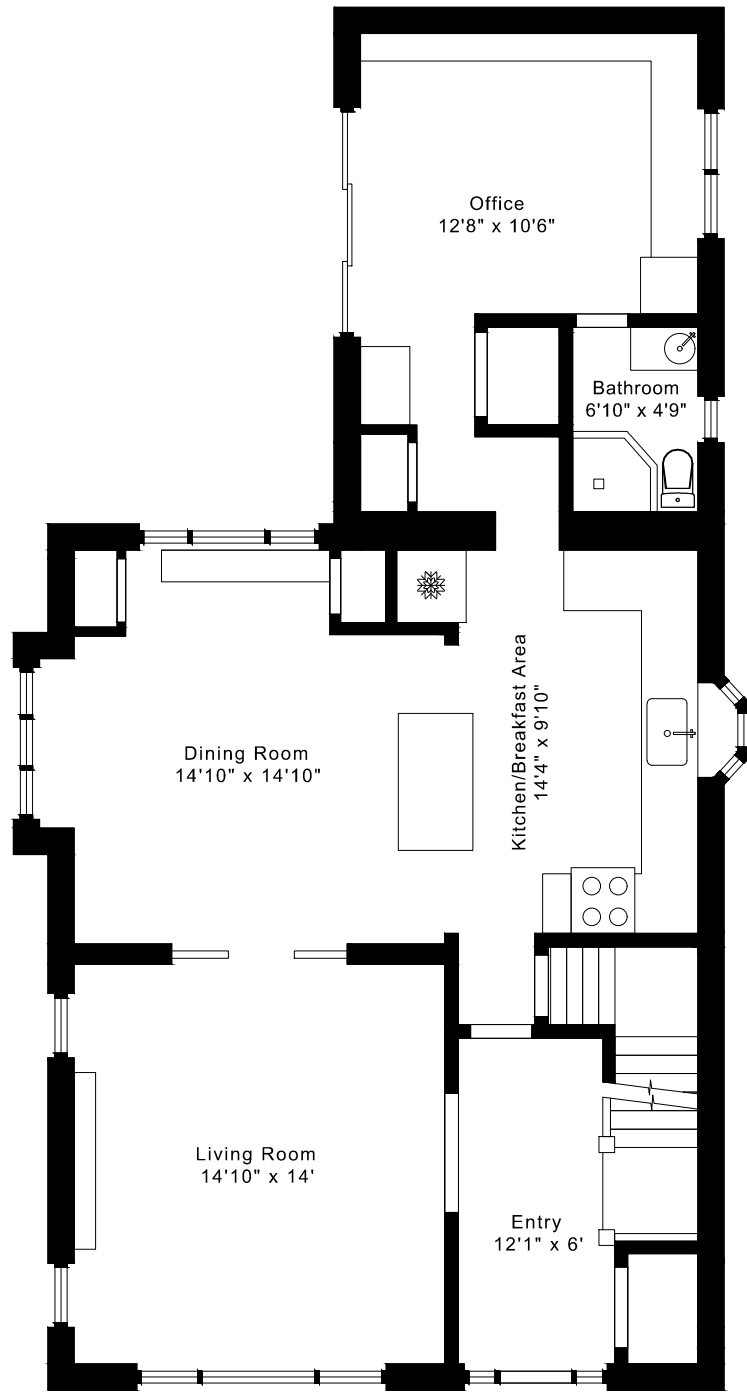
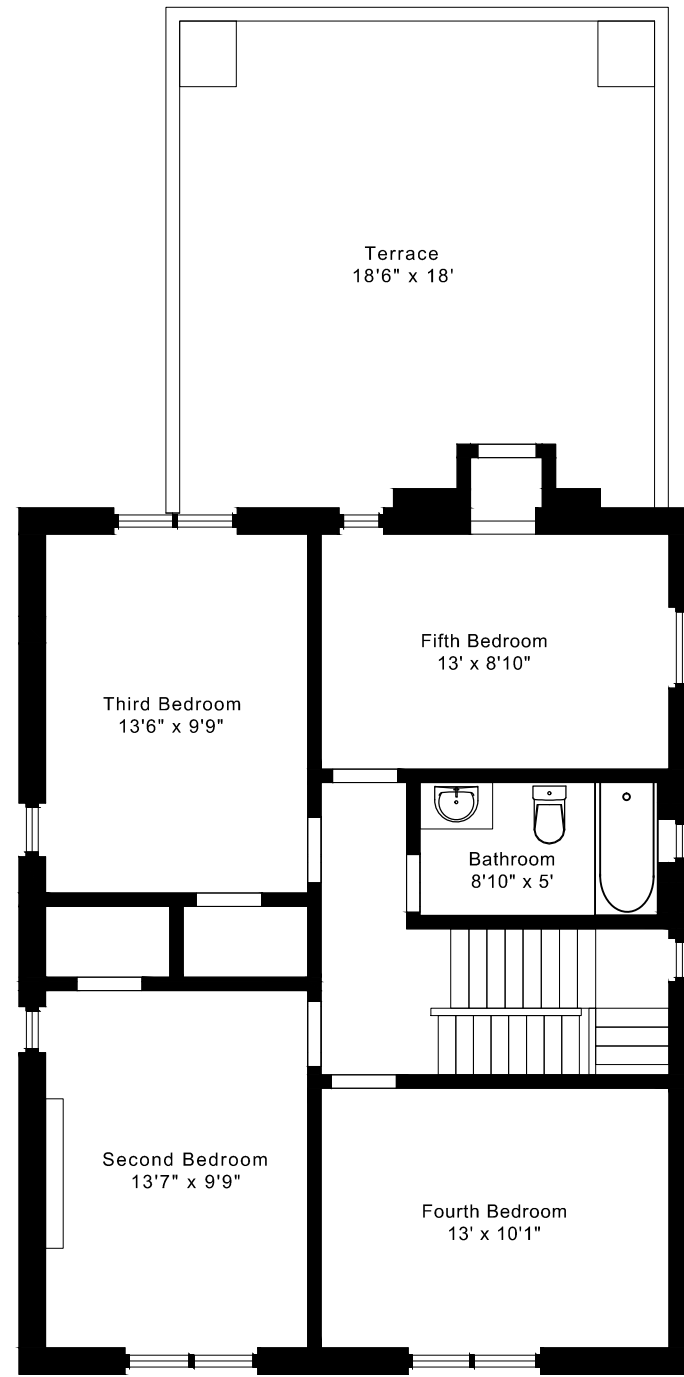


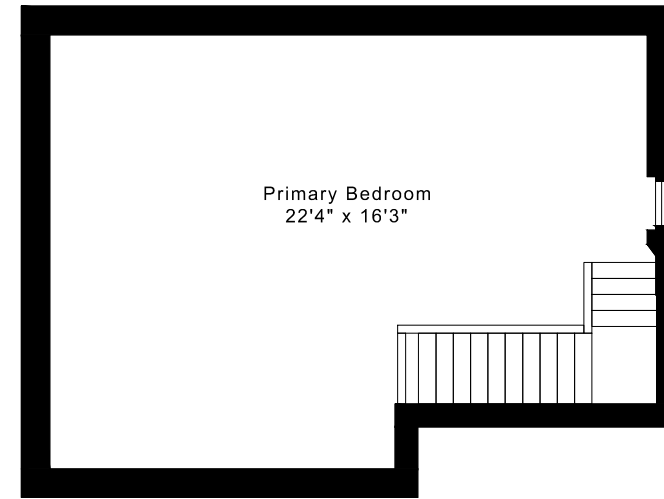
# 4 BIGGAR AVENUE FLOOR PLANS



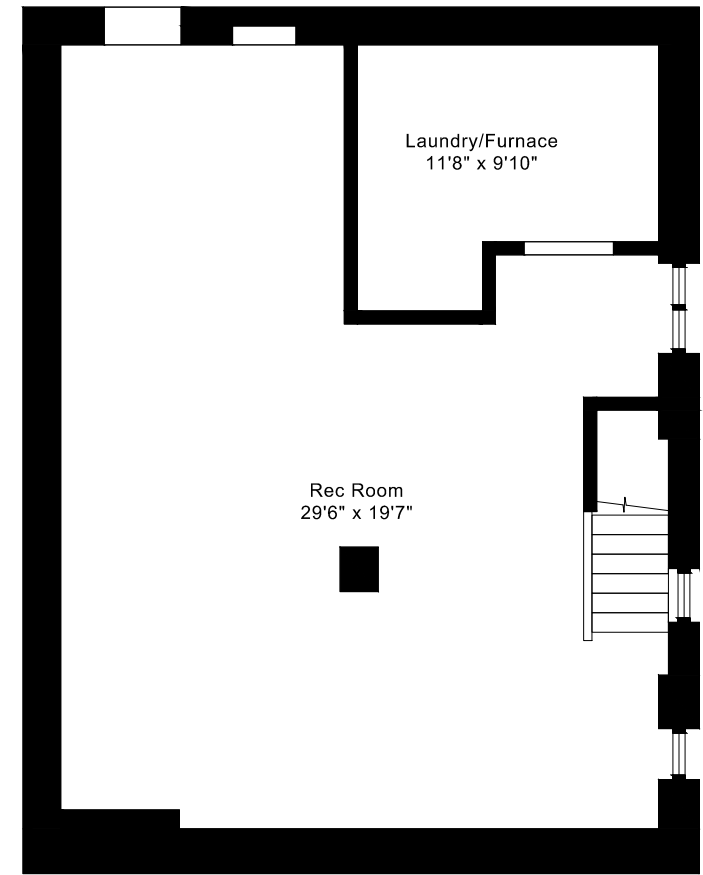
**MAIN FLOOR**  
1110 SQUARE FEET



**SECOND FLOOR**  
820 SQUARE FEET



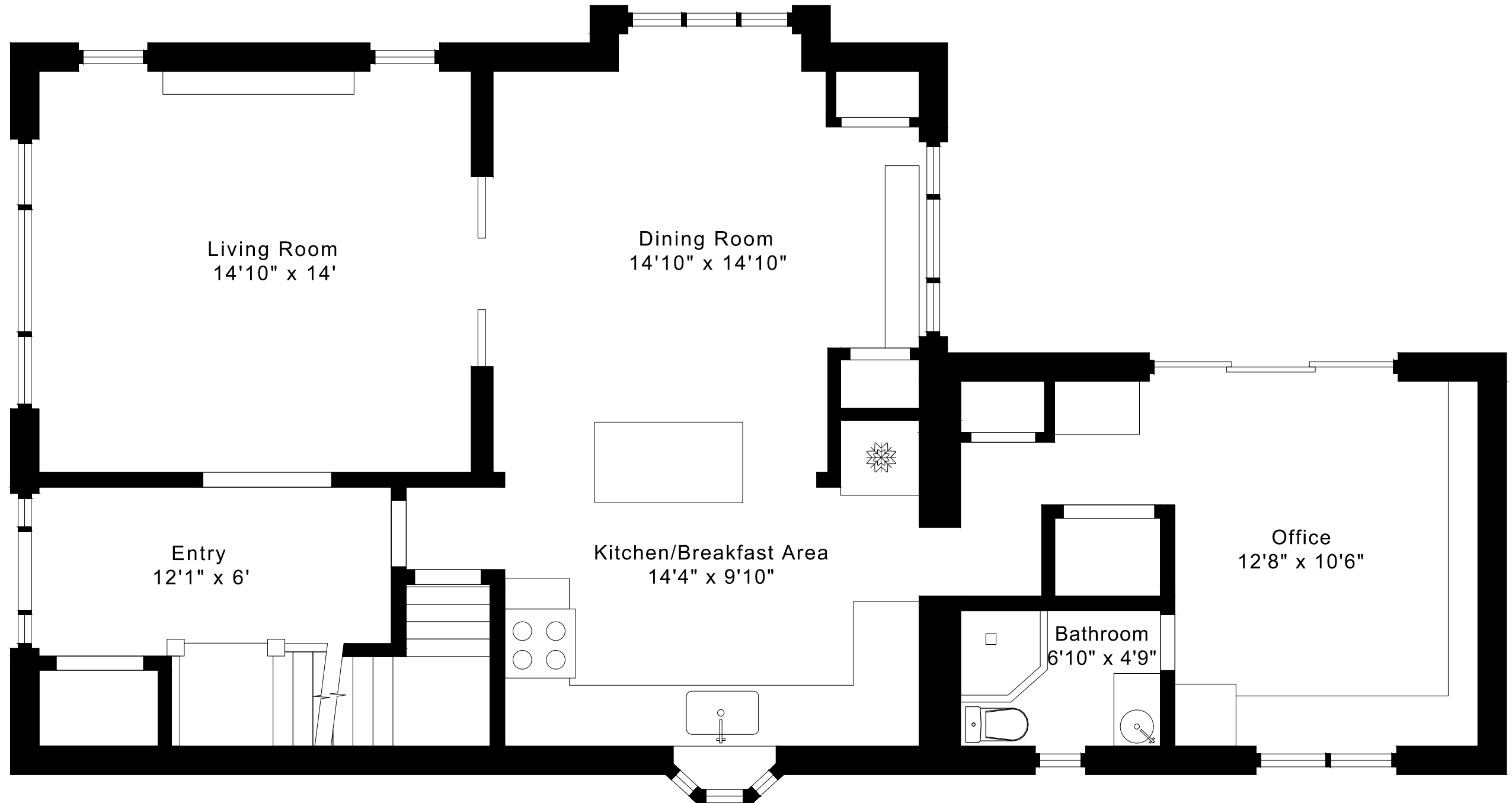
**THIRD FLOOR**  
425 SQUARE FEET



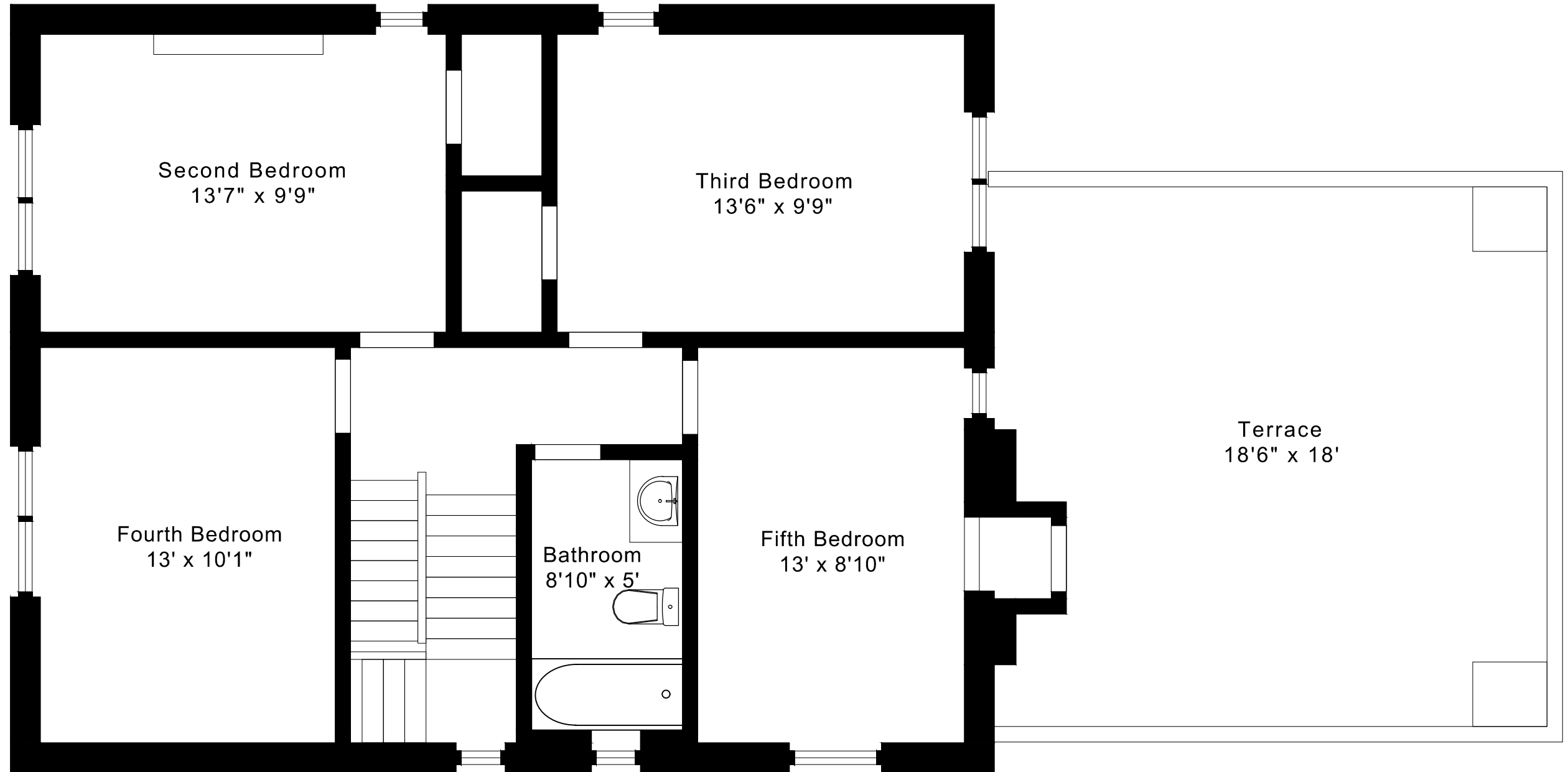
**LOWER FLOOR**  
820 SQUARE FEET

# 4 BIGGAR AVENUE FLOOR PLANS

MAIN FLOOR 1110 SQUARE FEET

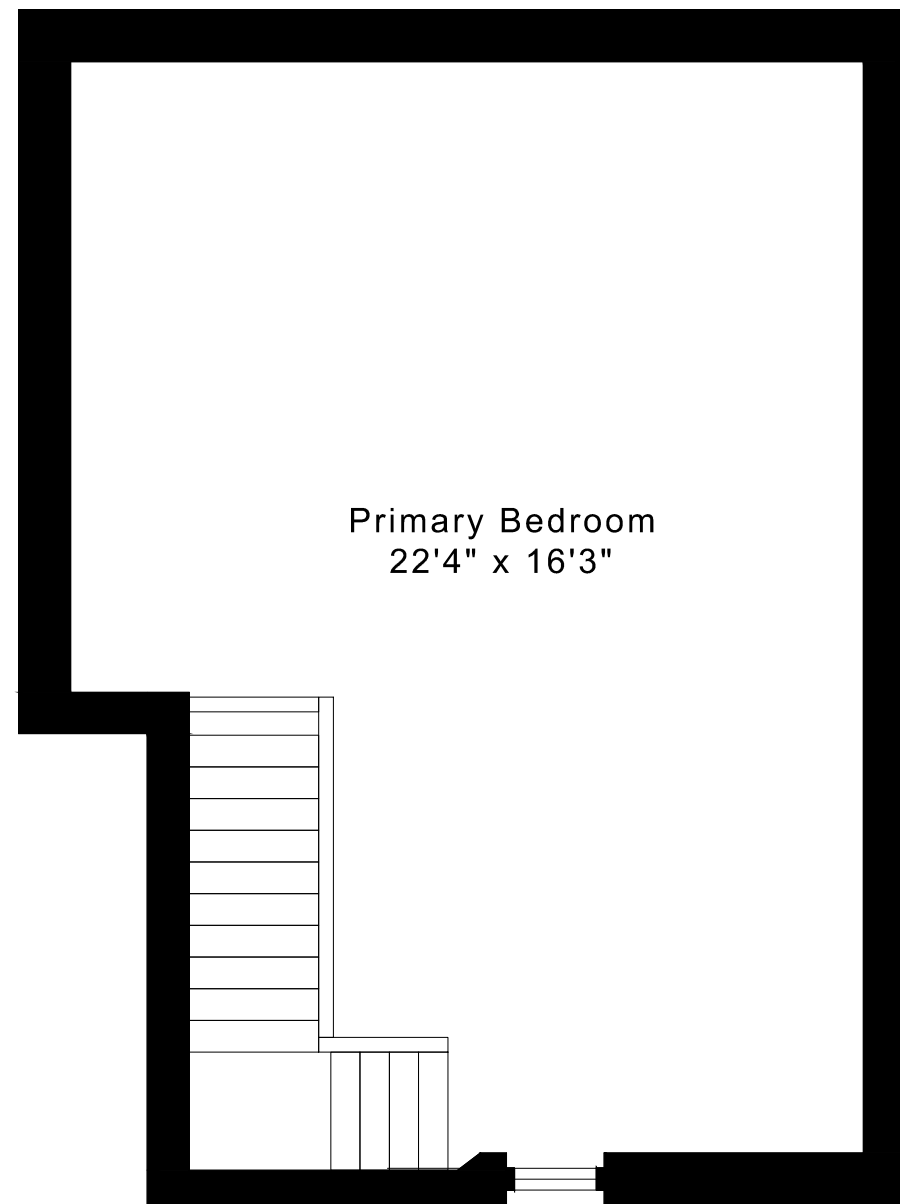


4 BIGGAR AVENUE  
FLOOR PLANS  
SECOND FLOOR 820 SQUARE FEET



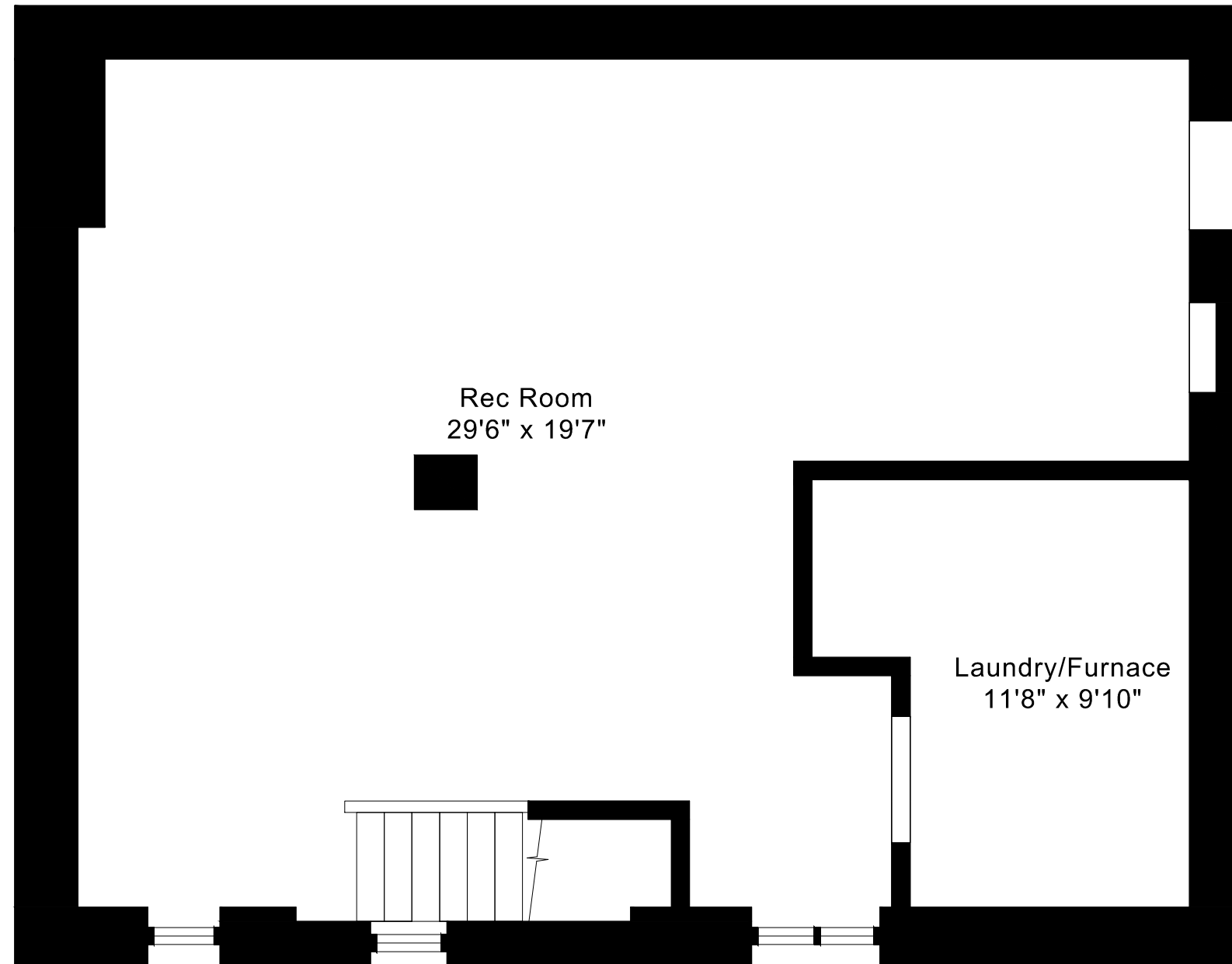
# 4 BIGGAR AVENUE FLOOR PLANS

THIRD FLOOR 425 SQUARE FEET



# 4 BIGGAR AVENUE FLOOR PLANS

LOWER FLOOR 820 SQUARE FEET



## 4 BIGGAR AVENUE ROOM MEASUREMENTS

Floor	Room	Imperial						Metric [m]		
		Length		Width		Height		Length	Width	Height
		Feet	Inches	Feet	Inches	Feet	Inches			
Third	Primary Bedroom	22	4	16	3	7	1	6,81	4,95	2,16
Second	Second Bedroom	13	7	9	9	8	4	4,14	2,97	2,54
	Third Bedroom	13	6	9	9	8	4	4,11	2,97	2,54
	Fourth Bedroom	13	0	10	1	8	4	3,96	3,07	2,54
	Fifth Bedroom	13	0	8	10	8	4	3,96	2,69	2,54
	Bathroom	8	10	5	0	8	4	2,69	1,52	2,54
	Terrace	18	6	18	0	0	0	5,64	5,49	0,00
Main	Entry	12	1	6	0	8	5	3,68	1,83	2,57
	Living Room	14	10	14	0	8	5	4,52	4,27	2,57
	Dining Room	14	10	14	10	8	5	4,52	4,52	2,57
	Kitchen/Breakfast Area	14	4	9	10	8	5	4,37	3,00	2,57
	Bathroom	6	10	4	9	8	5	2,08	1,45	2,57
	Office	12	8	10	6	8	7	3,86	3,20	2,62
Lower	Rec Room	29	6	19	7	7	1	8,99	5,97	2,16
	Laundry/Furnace	11	8	9	10	7	1	3,56	3,00	2,16

The following is a disclaimer regarding the approximate nature of dimensions and floor areas listed in this document:

---

**Disclaimer:**

The dimensions and floor areas listed in this document are provided as an estimate only and are intended to be used for illustration purposes only. These measurements are not necessarily meant to be a perfect representation of the actual space.

**Notes regarding measurement methods and accuracy:**

The utilization of laser measurement technology during the 3D model capturing process at the location provides an accurate representation of floor plans, with a typical margin of error of 3-5%. For the most accurate and official measurement data, it is advised to consult official documents such as MPAC records, builder's pre-construction plans, or data from certified measurement companies.

Exterior wall thickness is included in the calculation of the overall square footage and is considered as a component of the footprint. The wall thickness measurement is obtained onsite whenever possible, or estimated in the event where obtaining onsite measurements is not possible, such as in the case of condominium buildings where wall thickness may vary throughout the building.