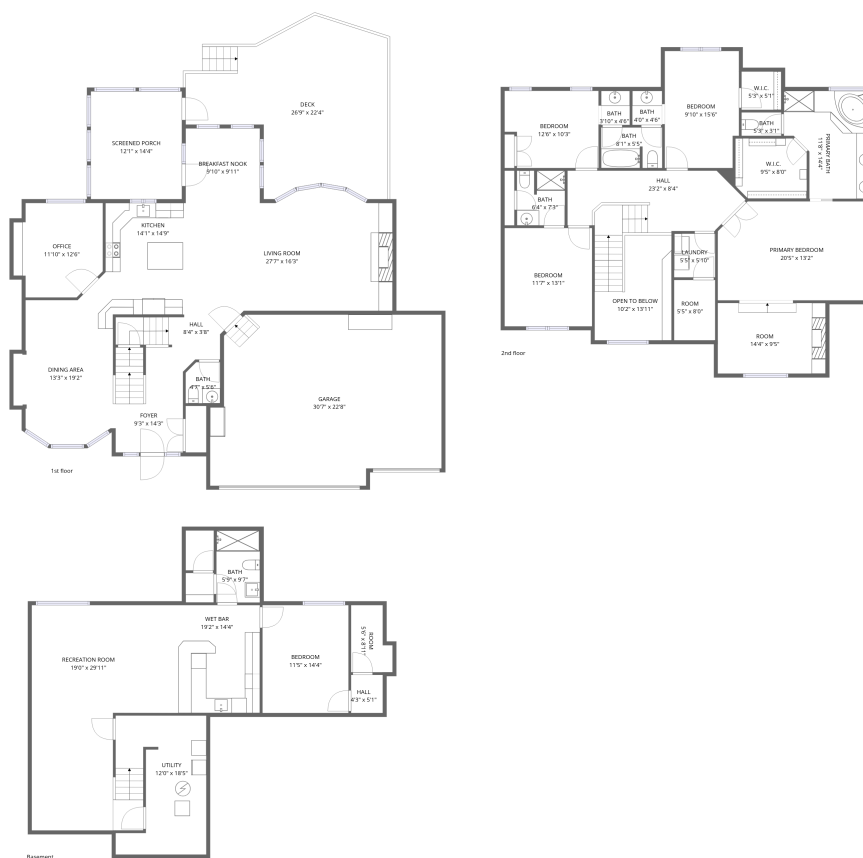


## Home data report

# 4539 Grove Street, Shawnee, Johnson County, Kansas, United States, 66226



**Total Area: 3777 sq. ft**

Basement: 917 sq. ft, 1st Floor: 1288 sq. ft, 2nd Floor: 1572 sq. ft

Excluded: Room 43 sq. ft, Undefined 20 sq. ft, Utility 187 sq. ft, Garage 647 sq. ft, Screened porch 173 sq. ft, Deck 454 sq. ft, Open to below 112 sq. ft, Walls: 327 sq. ft

## Property summary

 **3** Floors

 **5** Bedrooms

 **4** Bathrooms

Home data report

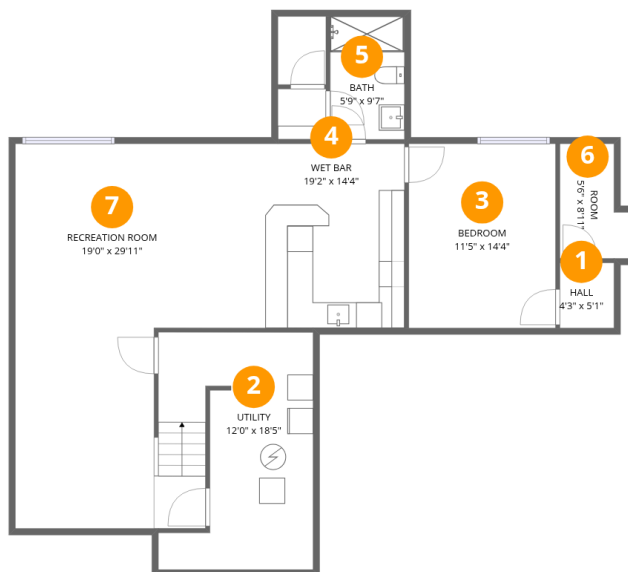
**4539 Grove Street, Shawnee, Johnson County, Kansas, United States, 66226**

 **1**  
Half baths

 **1**  
Garages

# Home data report

## 4539 Grove Street, Shawnee, Johnson County, Kansas, United States, 66226



### Room dimensions

Floor 1 Below grade

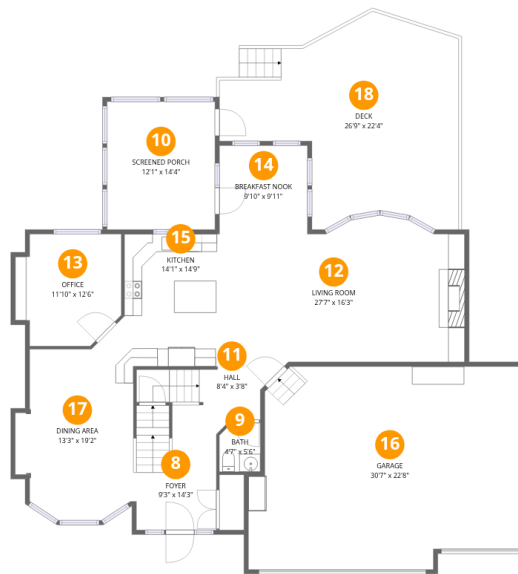
Total:917sqft

Excluded: 250sqft

#		Dimensions	sqft	Counted as living area
1	Hall	4'3" x 5'1"	21 sq. ft	Yes
2	Utility	12'0" x 18'5"	186 sq. ft	No
3	Bedroom	11'5" x 14'4"	163 sq. ft	Yes
4	Wet Bar	19'2" x 14'4"	163 sq. ft	Yes
5	Bath	5'9" x 9'7"	55 sq. ft	Yes
6	Room	5'6" x 8'11"	42 sq. ft	No
7	Recreation Room	19'0" x 29'11"	470 sq. ft	Yes

## Home data report

4539 Grove Street, Shawnee, Johnson County, Kansas, United States, 66226



## Room dimensions

Floor 2

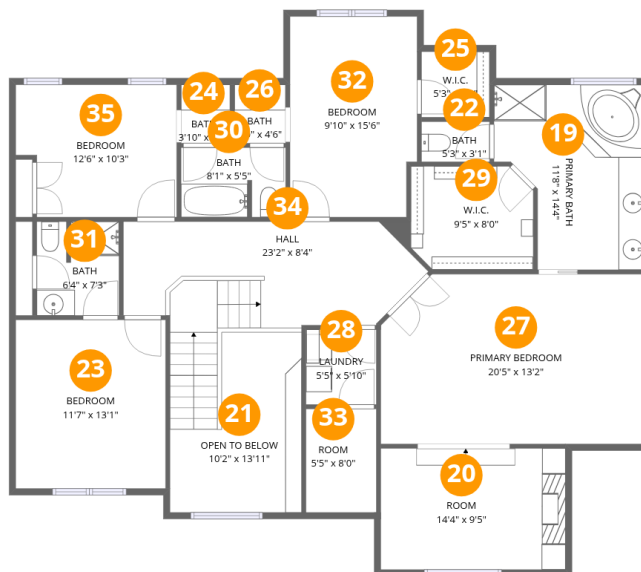
Total:1288sqft

Excluded: 1274sqft

#		Dimensions	sqft	Counted as living area
8	Foyer	9'3" x 14'3"	138 sq. ft	Yes
9	Bath	4'7" x 5'6"	24 sq. ft	Yes
10	Screened Porch	12'1" x 14'4"	173 sq. ft	No
11	Hall	8'4" x 3'8"	53 sq. ft	Yes
12	Living Room	27'7" x 16'3"	418 sq. ft	Yes
13	Office	11'10" x 12'6"	134 sq. ft	Yes
14	Breakfast Nook	9'10" x 9'11"	97 sq. ft	Yes
15	Kitchen	14'1" x 14'9"	159 sq. ft	Yes
16	Garage	30'7" x 22'8"	647 sq. ft	No
17	Dining Area	13'3" x 19'2"	226 sq. ft	Yes
18	Deck	26'9" x 22'4"	454 sq. ft	No

Home data report

4539 Grove Street, Shawnee, Johnson County, Kansas, United States, 66226



## Room dimensions

Floor 3

Total:1572sqft

Excluded: 112sqft

#		Dimensions	sqft	Counted as living area
19	Primary Bath	11'8" x 14'4"	141 sq. ft	Yes
20	Room	14'4" x 9'5"	134 sq. ft	Yes
21	Open To Below	10'2" x 13'11"	112 sq. ft	No
22	Bath	5'3" x 3'1"	16 sq. ft	Yes
23	Bedroom	11'7" x 13'1"	151 sq. ft	Yes
24	Bath	3'10" x 4'6"	17 sq. ft	Yes
25	W.I.C.	5'3" x 5'1"	27 sq. ft	Yes
26	Bath	4'0" x 4'6"	18 sq. ft	Yes
27	Primary Bedroom	20'5" x 13'2"	260 sq. ft	Yes
28	Laundry	5'5" x 5'10"	32 sq. ft	Yes
29	W.I.C.	9'5" x 8'0"	75 sq. ft	Yes

Home data report

**4539 Grove Street, Shawnee, Johnson County, Kansas, United States, 66226**

#		Dimensions	sqft	Counted as living area
30	Bath	8'1" x 5'5"	43 sq. ft	Yes
31	Bath	6'4" x 7'3"	45 sq. ft	Yes
32	Bedroom	9'10" x 15'6"	149 sq. ft	Yes
33	Room	5'5" x 8'0"	44 sq. ft	Yes
34	Hall	23'2" x 8'4"	206 sq. ft	Yes
35	Bedroom	12'6" x 10'3"	120 sq. ft	Yes

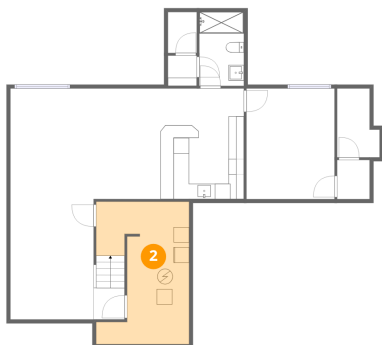
## 1 Floor 1 - Hall



Dimensions: 4'3" x 5'1"  
Area: 21 sq. ft  
Counted as living area: Yes

Heated: Yes  
Finished: Yes  
Enclosed: Yes  
Contiguous: Yes  
Permitted: Yes  
Wet space: No  
Addition: No  
Conversion: No

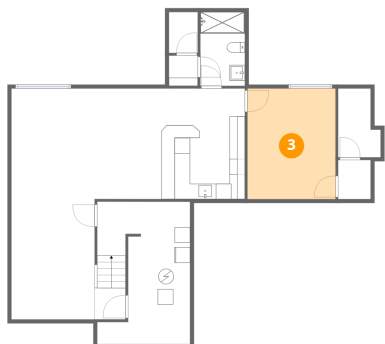
## 2 Floor 1 - Utility



Dimensions: 12'0" x 18'5"  
Area: 186 sq. ft  
Counted as living area: No

Heated: Yes  
Finished: No  
Enclosed: Yes  
Contiguous: Yes  
Permitted: Yes  
Wet space: No  
Addition: No  
Conversion: No

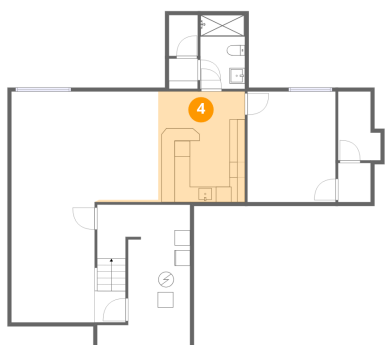
### 3 Floor 1 - Bedroom



Dimensions: 11'5" x 14'4"  
Area: 163 sq. ft  
Counted as living area: Yes

Heated: Yes  
Finished: Yes  
Enclosed: Yes  
Contiguous: Yes  
Permitted: Yes  
Wet space: No  
Addition: No  
Conversion: No

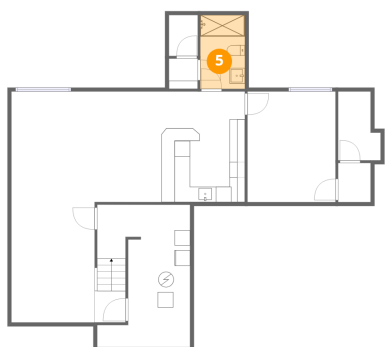
### 4 Floor 1 - Wet Bar



Dimensions: 19'2" x 14'4"  
Area: 163 sq. ft  
Counted as living area: Yes

Heated: Yes  
Finished: Yes  
Enclosed: Yes  
Contiguous: Yes  
Permitted: Yes  
Wet space: No  
Addition: No  
Conversion: No

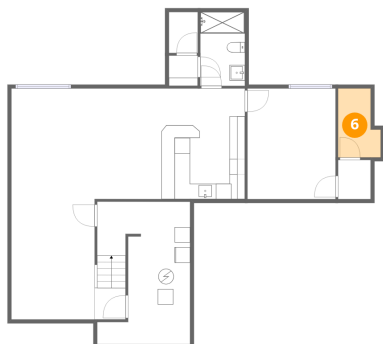
### 5 Floor 1 - Bath



Dimensions: 5'9" x 9'7"  
Area: 55 sq. ft  
Counted as living area: Yes

Heated: Yes  
Finished: Yes  
Enclosed: Yes  
Contiguous: Yes  
Permitted: Yes  
Wet space: Yes  
Addition: No  
Conversion: No

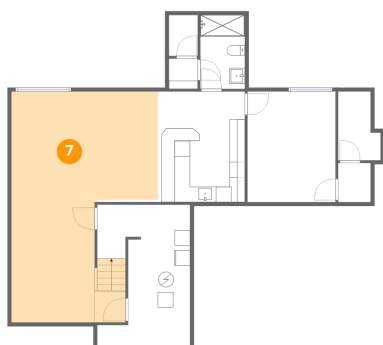
## 6 Floor 1 - Room



Dimensions: 5'6" x 8'11"  
Area: 42 sq. ft  
Counted as living area: No

Heated: Yes  
Finished: No  
Enclosed: Yes  
Contiguous: Yes  
Permitted: Yes  
Wet space: No  
Addition: No  
Conversion: No

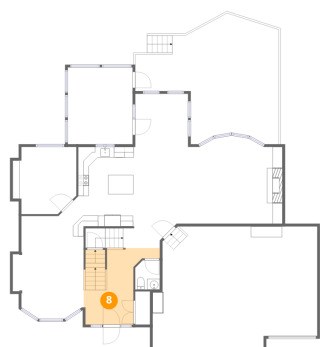
## 7 Floor 1 - Recreation Room



Dimensions: 19'0" x 29'11"  
Area: 470 sq. ft  
Counted as living area: Yes

Heated: Yes  
Finished: Yes  
Enclosed: Yes  
Contiguous: Yes  
Permitted: Yes  
Wet space: No  
Addition: No  
Conversion: No

## 8 Floor 2 - Foyer



Dimensions: 9'3" x 14'3"  
Area: 138 sq. ft  
Counted as living area: Yes

Heated: Yes  
Finished: Yes  
Enclosed: Yes  
Contiguous: Yes  
Permitted: Yes  
Wet space: No  
Addition: No  
Conversion: No

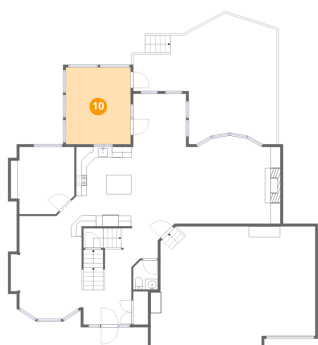
### 9 Floor 2 - Bath



Dimensions: 4'7" x 5'6"  
Area: 24 sq. ft  
Counted as living area: Yes

Heated: Yes  
Finished: Yes  
Enclosed: Yes  
Contiguous: Yes  
Permitted: Yes  
Wet space: Yes  
Addition: No  
Conversion: No

### 10 Floor 2 - Screened Porch



Dimensions: 12'1" x 14'4"  
Area: 173 sq. ft  
Counted as living area: No

Heated: No  
Finished: No  
Enclosed: No  
Contiguous: Yes  
Permitted: Yes  
Wet space: No  
Addition: No  
Conversion: No

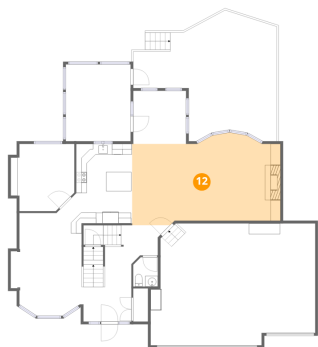
### 11 Floor 2 - Hall



Dimensions: 8'4" x 3'8"  
Area: 53 sq. ft  
Counted as living area: Yes

Heated: Yes  
Finished: Yes  
Enclosed: Yes  
Contiguous: Yes  
Permitted: Yes  
Wet space: No  
Addition: No  
Conversion: No

## 12 Floor 2 - Living Room



Dimensions: 27'7" x 16'3"  
Area: 418 sq. ft  
Counted as living area: Yes

Heated: Yes  
Finished: Yes  
Enclosed: Yes  
Contiguous: Yes  
Permitted: Yes  
Wet space: No  
Addition: No  
Conversion: No

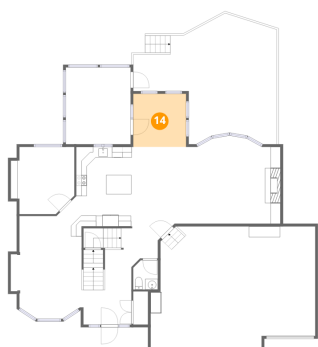
## 13 Floor 2 - Office



Dimensions: 11'10" x 12'6"  
Area: 134 sq. ft  
Counted as living area: Yes

Heated: Yes  
Finished: Yes  
Enclosed: Yes  
Contiguous: Yes  
Permitted: Yes  
Wet space: No  
Addition: No  
Conversion: No

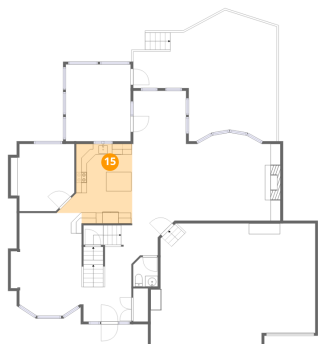
## 14 Floor 2 - Breakfast Nook



Dimensions: 9'10" x 9'11"  
Area: 97 sq. ft  
Counted as living area: Yes

Heated: Yes  
Finished: Yes  
Enclosed: Yes  
Contiguous: Yes  
Permitted: Yes  
Wet space: No  
Addition: No  
Conversion: No

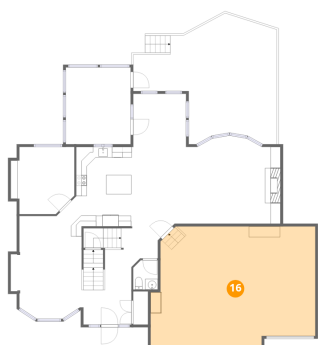
### 15 Floor 2 - Kitchen



Dimensions: 14'1" x 14'9"  
Area: 159 sq. ft  
Counted as living area: Yes

Heated: Yes  
Finished: Yes  
Enclosed: Yes  
Contiguous: Yes  
Permitted: Yes  
Wet space: No  
Addition: No  
Conversion: No

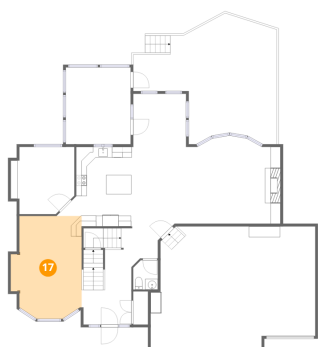
### 16 Floor 2 - Garage



Dimensions: 30'7" x 22'8"  
Area: 647 sq. ft  
Counted as living area: No

Heated: No  
Finished: No  
Enclosed: Yes  
Contiguous: Yes  
Permitted: Yes  
Wet space: No  
Addition: No  
Conversion: No

### 17 Floor 2 - Dining Area



Dimensions: 13'3" x 19'2"  
Area: 226 sq. ft  
Counted as living area: Yes

Heated: Yes  
Finished: Yes  
Enclosed: Yes  
Contiguous: Yes  
Permitted: Yes  
Wet space: No  
Addition: No  
Conversion: No

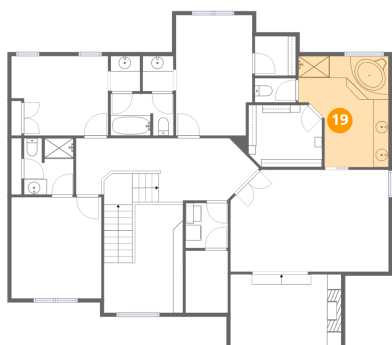
### 18 Floor 2 - Deck



Dimensions: 26'9" x 22'4"  
Area: 454 sq. ft  
Counted as living area: No

Heated: No  
Finished: No  
Enclosed: No  
Contiguous: Yes  
Permitted: Yes  
Wet space: No  
Addition: No  
Conversion: No

### 19 Floor 3 - Primary Bath



Dimensions: 11'8" x 14'4"  
Area: 141 sq. ft  
Counted as living area: Yes

Heated: Yes  
Finished: Yes  
Enclosed: Yes  
Contiguous: Yes  
Permitted: Yes  
Wet space: Yes  
Addition: No  
Conversion: No

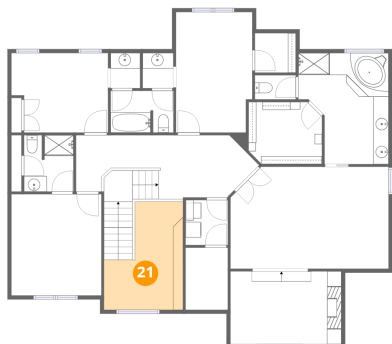
### 20 Floor 3 - Room



Dimensions: 14'4" x 9'5"  
Area: 134 sq. ft  
Counted as living area: Yes

Heated: Yes  
Finished: Yes  
Enclosed: Yes  
Contiguous: Yes  
Permitted: Yes  
Wet space: No  
Addition: No  
Conversion: No

### 21 Floor 3 - Open To Below



Dimensions: 10'2" x 13'11"  
Area: 112 sq. ft  
Counted as living area: No

Heated: No  
Finished: No  
Enclosed: No  
Contiguous: Yes  
Permitted: No  
Wet space: No  
Addition: No  
Conversion: No

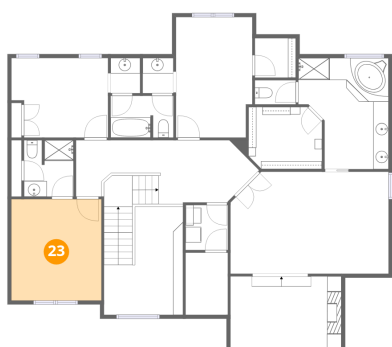
### 22 Floor 3 - Bath



Dimensions: 5'3" x 3'1"  
Area: 16 sq. ft  
Counted as living area: Yes

Heated: Yes  
Finished: Yes  
Enclosed: Yes  
Contiguous: Yes  
Permitted: Yes  
Wet space: Yes  
Addition: No  
Conversion: No

### 23 Floor 3 - Bedroom



Dimensions: 11'7" x 13'1"  
Area: 151 sq. ft  
Counted as living area: Yes

Heated: Yes  
Finished: Yes  
Enclosed: Yes  
Contiguous: Yes  
Permitted: Yes  
Wet space: No  
Addition: No  
Conversion: No

**24** Floor 3 - Bath



Dimensions: 3'10" x 4'6"  
Area: 17 sq. ft  
Counted as living area: Yes

Heated: Yes  
Finished: Yes  
Enclosed: Yes  
Contiguous: Yes  
Permitted: Yes  
Wet space: Yes  
Addition: No  
Conversion: No

**25** Floor 3 - W.I.C.



Dimensions: 5'3" x 5'1"  
Area: 27 sq. ft  
Counted as living area: Yes

Heated: Yes  
Finished: Yes  
Enclosed: Yes  
Contiguous: Yes  
Permitted: Yes  
Wet space: No  
Addition: No  
Conversion: No

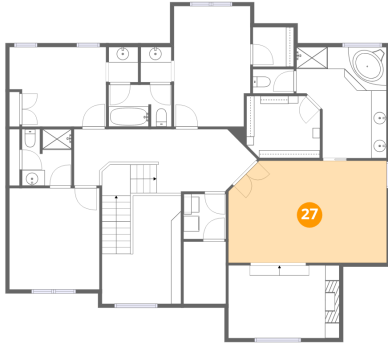
**26** Floor 3 - Bath



Dimensions: 4'0" x 4'6"  
Area: 18 sq. ft  
Counted as living area: Yes

Heated: Yes  
Finished: Yes  
Enclosed: Yes  
Contiguous: Yes  
Permitted: Yes  
Wet space: Yes  
Addition: No  
Conversion: No

**27** Floor 3 - Primary Bedroom



Dimensions: 20'5" x 13'2"  
Area: 260 sq. ft  
Counted as living area: Yes

Heated: Yes  
Finished: Yes  
Enclosed: Yes  
Contiguous: Yes  
Permitted: Yes  
Wet space: No  
Addition: No  
Conversion: No

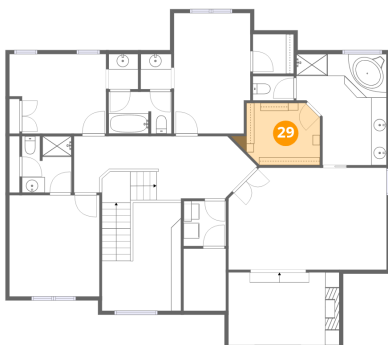
**28** Floor 3 - Laundry



Dimensions: 5'5" x 5'10"  
Area: 32 sq. ft  
Counted as living area: Yes

Heated: Yes  
Finished: Yes  
Enclosed: Yes  
Contiguous: Yes  
Permitted: Yes  
Wet space: No  
Addition: No  
Conversion: No

**29** Floor 3 - W.I.C.



Dimensions: 9'5" x 8'0"  
Area: 75 sq. ft  
Counted as living area: Yes

Heated: Yes  
Finished: Yes  
Enclosed: Yes  
Contiguous: Yes  
Permitted: Yes  
Wet space: No  
Addition: No  
Conversion: No

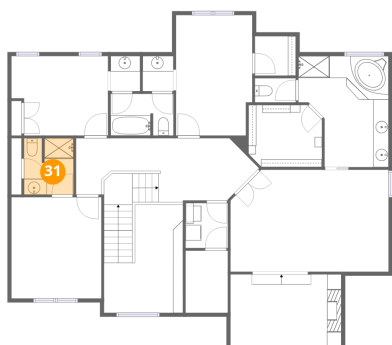
**30** Floor 3 - Bath



Dimensions: 8'1" x 5'5"  
Area: 43 sq. ft  
Counted as living area: Yes

Heated: Yes  
Finished: Yes  
Enclosed: Yes  
Contiguous: Yes  
Permitted: Yes  
Wet space: Yes  
Addition: No  
Conversion: No

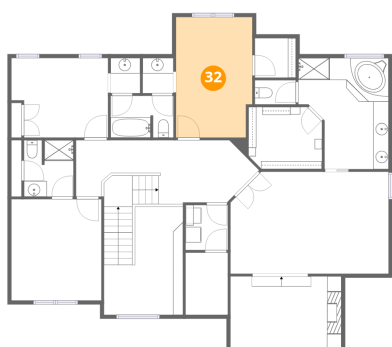
**31** Floor 3 - Bath



Dimensions: 6'4" x 7'3"  
Area: 45 sq. ft  
Counted as living area: Yes

Heated: Yes  
Finished: Yes  
Enclosed: Yes  
Contiguous: Yes  
Permitted: Yes  
Wet space: Yes  
Addition: No  
Conversion: No

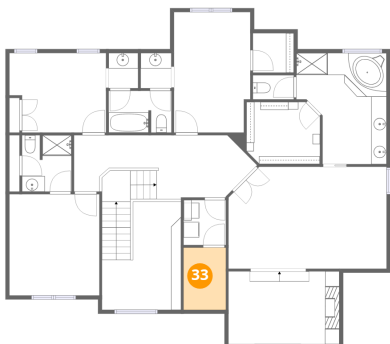
**32** Floor 3 - Bedroom



Dimensions: 9'10" x 15'6"  
Area: 149 sq. ft  
Counted as living area: Yes

Heated: Yes  
Finished: Yes  
Enclosed: Yes  
Contiguous: Yes  
Permitted: Yes  
Wet space: No  
Addition: No  
Conversion: No

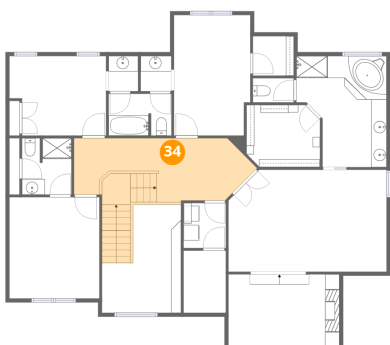
**33** Floor 3 - Room



Dimensions: 5'5" x 8'0"  
Area: 44 sq. ft  
Counted as living area: Yes

Heated: Yes  
Finished: Yes  
Enclosed: Yes  
Contiguous: Yes  
Permitted: Yes  
Wet space: No  
Addition: No  
Conversion: No

**34** Floor 3 - Hall



Dimensions: 23'2" x 8'4"  
Area: 206 sq. ft  
Counted as living area: Yes

Heated: Yes  
Finished: Yes  
Enclosed: Yes  
Contiguous: Yes  
Permitted: Yes  
Wet space: No  
Addition: No  
Conversion: No

**35** Floor 3 - Bedroom



Dimensions: 12'6" x 10'3"  
Area: 120 sq. ft  
Counted as living area: Yes

Heated: Yes  
Finished: Yes  
Enclosed: Yes  
Contiguous: Yes  
Permitted: Yes  
Wet space: No  
Addition: No  
Conversion: No