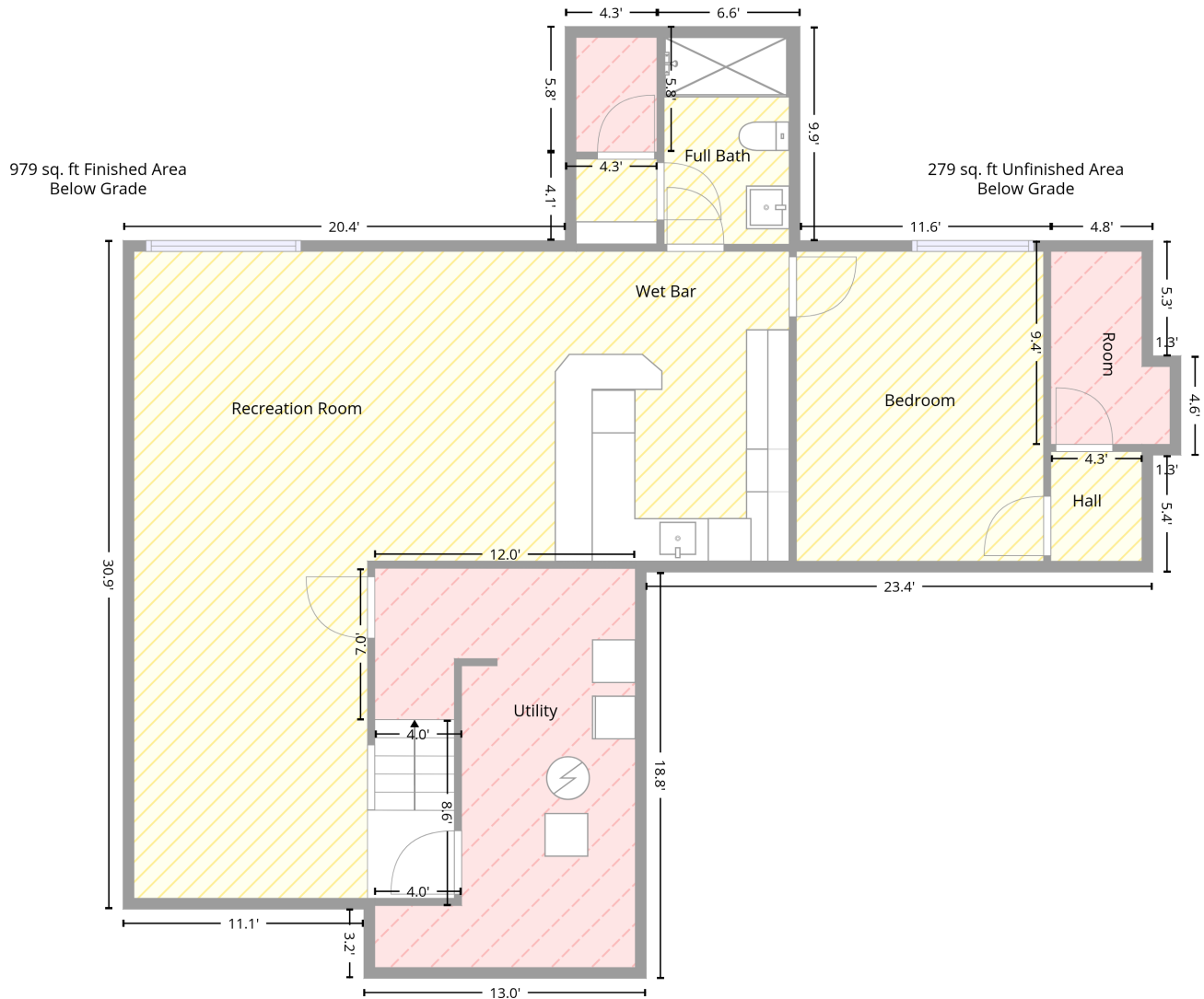


# 4539 Grove Street, Shawnee, Johnson County, Kansas, United States, 66226

Total area: 4942 sq. ft  
Gross living area: 3041 sq. ft

Finished area: 4020 sq. ft  
Non-standard finished area: 0 sq. ft

## Level 1 - Below Grade



Total area: 1258 sq. ft  
Gross living area: 0 sq. ft

Finished area: 979 sq. ft  
Non-standard finished area: 0 sq. ft

# 4539 Grove Street, Shawnee, Johnson County, Kansas, United States, 66226

Total area: 4942 sq. ft  
Gross living area: 3041 sq. ft

Finished area: 4020 sq. ft  
Non-standard finished area: 0 sq. ft

## Level 1 - Below Grade

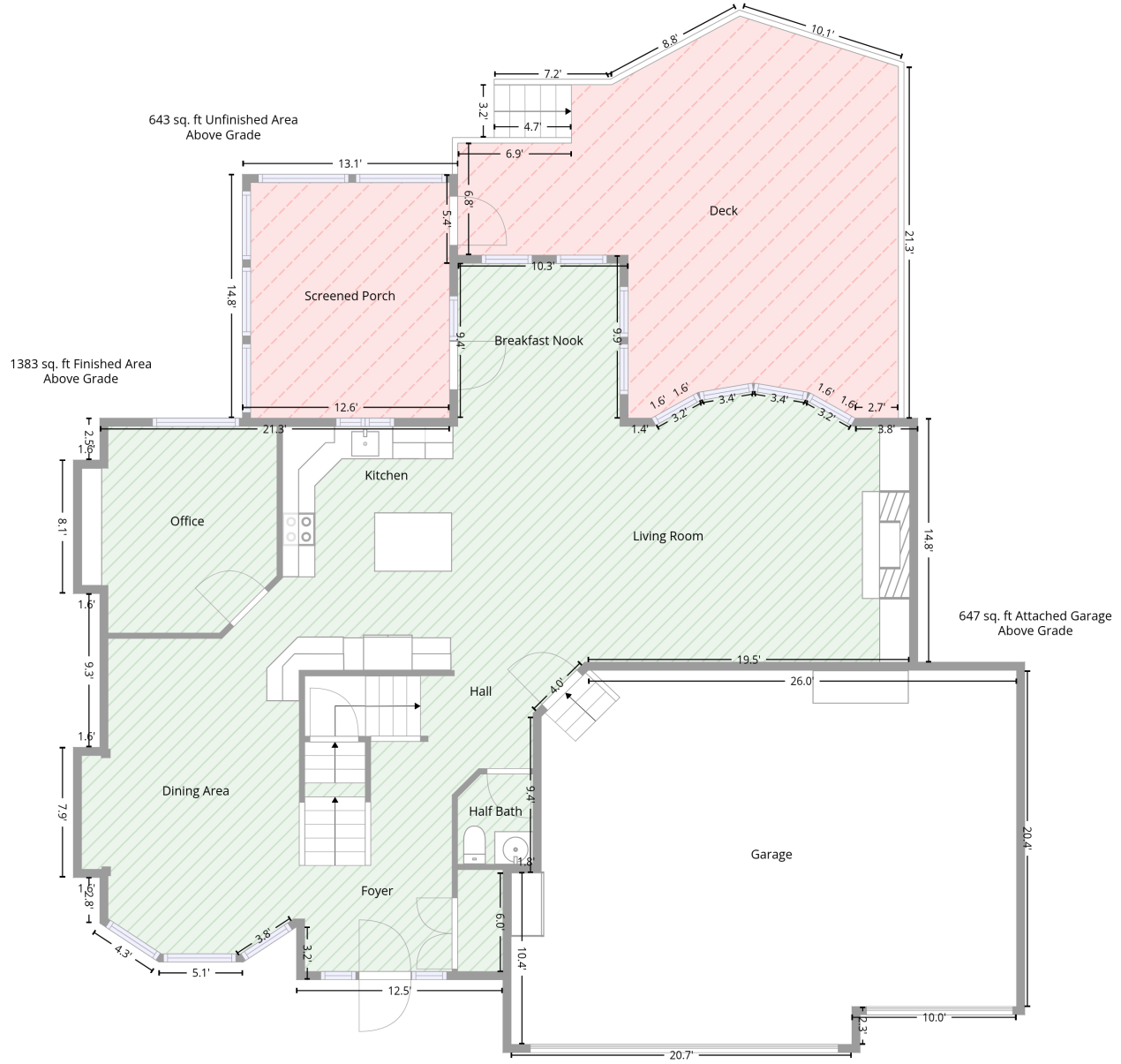
Space	Area (sq. ft)	Calculation <small>Coordinate Polygon Area Algorithm using inches</small>
Finished Area <ul style="list-style-type: none"><li>• Living area</li><li>• Finished Area</li></ul>	979	$-\left((400.8 + 400.8) * (173.7 - 292.4) + (400.8 + 539.8) * (292.4 - 292.4) + (539.8 + 539.8) * (292.4 - 405.3) + (539.8 + 590.3) * (405.3 - 405.3) + (590.3 + 590.3) * (405.3 - 405.3) + (590.3 + 596.3) * (405.3 - 411.3) + (596.3 + 596.3) * (411.3 - 476.1) + (596.3 + 315.6) * (476.1 - 476.1) + (315.6 + 309.6) * (476.1 - 474) + (309.6 + 309.6) * (474 - 474.1) + (309.6 + 165.3) * (474.1 - 474) + (165.3 + 165.3) * (474 - 558) + (165.3 + 213.4) * (558 - 558) + (213.4 + 213.4) * (558 - 660.9) + (213.4 + 165.3) * (660.9 - 660.9) + (165.3 + 159.3) * (660.9 - 662.9) + (159.3 + 25.9) * (662.9 - 662.9) + (25.9 + 25.9) * (662.9 - 292.4) + (25.9 + 270.8) * (292.4 - 292.4) + (270.8 + 270.8) * (292.4 - 243.3) + (270.8 + 321.6) * (243.3 - 243.3) + (321.6 + 321.6) * (243.3 - 173.7) + (321.6 + 400.8) * (173.7 - 173.7)) * 0.5 * 0.00694$
ROOM <ul style="list-style-type: none"><li>• Non-living area</li><li>• Unfinished Area</li></ul>	50	$-\left((596.3 + 596.3) * (292.4 - 356.2) + (596.3 + 611.8) * (356.2 - 356.2) + (611.8 + 611.8) * (356.2 - 411.3) + (611.8 + 596.3) * (411.3 - 411.3) + (596.3 + 590.3) * (411.3 - 405.3) + (590.3 + 539.8) * (405.3 - 405.3) + (539.8 + 539.8) * (405.3 - 292.4) + (539.8 + 596.3) * (292.4 - 292.4)) * 0.5 * 0.00694$
UNDEFINED <ul style="list-style-type: none"><li>• Non-living area</li><li>• Unfinished Area</li></ul>	25	$-\left((321.6 + 321.6) * (173.7 - 243.3) + (321.6 + 270.8) * (243.3 - 243.3) + (270.8 + 270.8) * (243.3 - 173.7) + (270.8 + 321.6) * (173.7 - 173.7)) * 0.5 * 0.00694$
UTILITY <ul style="list-style-type: none"><li>• Non-living area</li><li>• Unfinished Area</li></ul>	204	$-\left((165.3 + 309.6) * (474 - 474.1) + (309.6 + 309.6) * (474.1 - 474) + (309.6 + 315.6) * (474 - 476.1) + (315.6 + 315.6) * (476.1 - 701.3) + (315.6 + 159.3) * (701.3 - 701.3) + (159.3 + 159.3) * (701.3 - 662.9) + (159.3 + 165.3) * (662.9 - 660.9) + (165.3 + 213.4) * (660.9 - 660.9) + (213.4 + 213.4) * (660.9 - 558) + (213.4 + 165.3) * (558 - 558) + (165.3 + 165.3) * (558 - 474)) * 0.5 * 0.00694$

# 4539 Grove Street, Shawnee, Johnson County, Kansas, United States, 66226

Total area: 4942 sq. ft  
Gross living area: 3041 sq. ft

Finished area: 4020 sq. ft  
Non-standard finished area: 0 sq. ft

## Level 2



Total area: 2026 sq. ft  
Gross living area: 1383 sq. ft

Finished area: 1383 sq. ft  
Non-standard finished area: 0 sq. ft

# 4539 Grove Street, Shawnee, Johnson County, Kansas, United States, 66226

Total area: 4942 sq. ft  
Gross living area: 3041 sq. ft

Finished area: 4020 sq. ft  
Non-standard finished area: 0 sq. ft

## Level 2

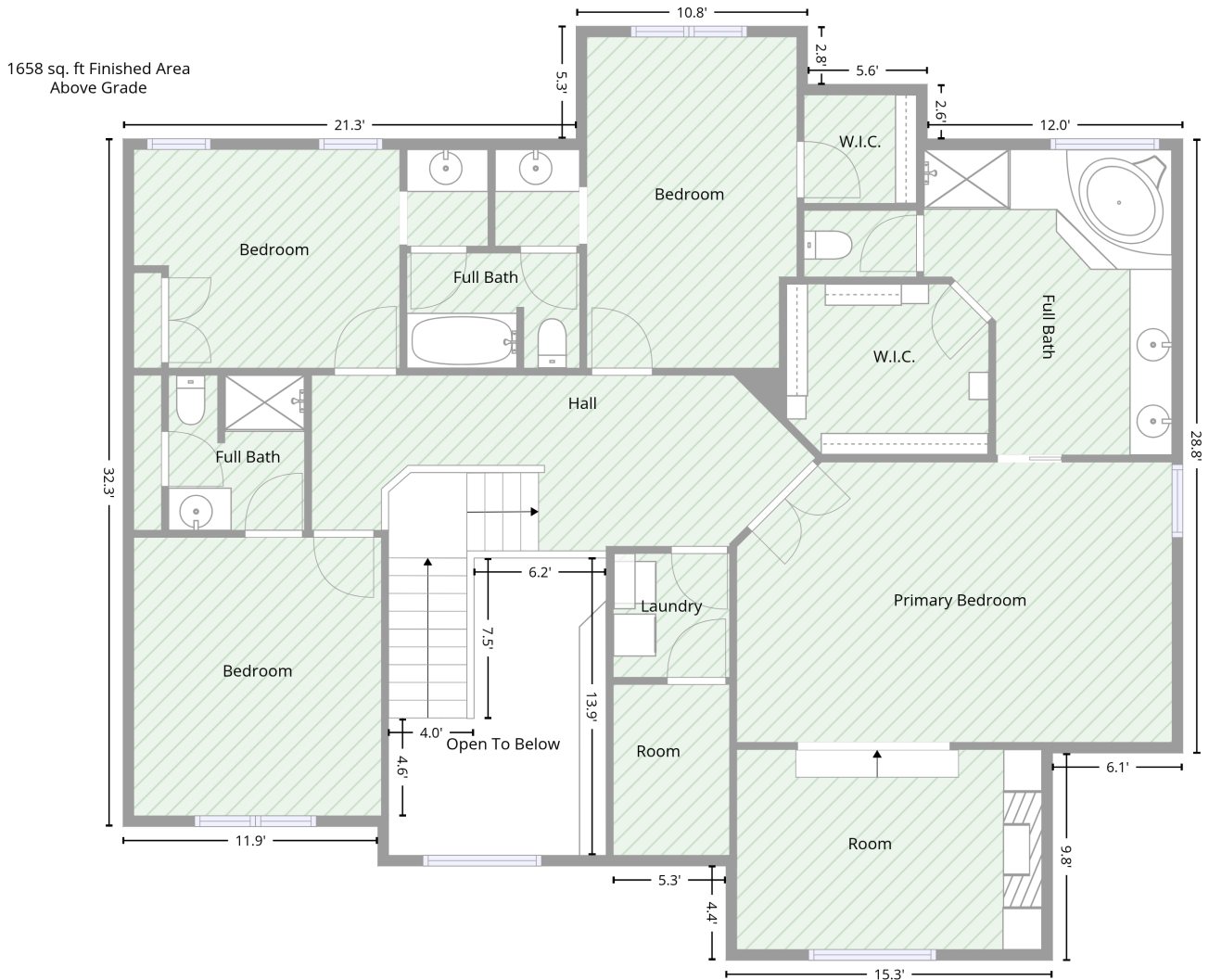
Space	Area (sq. ft)	Calculation <small>Coordinate Polygon Area Algorithm using inches</small>
Finished Area <ul style="list-style-type: none"><li>• Living area</li><li>• Finished Area</li></ul>	1383	$-((400.8 + 400.8) * (173.7 - 292.4) + (400.8 + 418) * (292.4 - 292.4) + (418 + 451.7) * (292.4 - 273.7) + (451.7 + 492.1) * (273.7 - 266.8) + (492.1 + 532.6) * (266.8 - 273.7) + (532.6 + 566.2) * (273.7 - 292.4) + (566.2 + 611.8) * (292.4 - 292.4) + (611.8 + 611.8) * (292.4 - 470) + (611.8 + 605.8) * (470 - 470) + (605.8 + 605.8) * (470 - 476) + (605.8 + 371.7) * (476 - 476) + (371.7 + 337.6) * (476 - 509.7) + (337.6 + 337.6) * (509.7 - 623.1) + (337.6 + 315.6) * (623.1 - 623.1) + (315.6 + 315.6) * (623.1 - 695.3) + (315.6 + 309.6) * (695.3 - 695.3) + (309.6 + 309.6) * (695.3 - 701.3) + (309.6 + 159.3) * (701.3 - 701.3) + (159.3 + 159.3) * (701.3 - 662.9) + (159.3 + 159.1) * (662.9 - 662.9) + (159.1 + 120.5) * (662.9 - 688.4) + (120.5 + 59) * (688.4 - 688.4) + (59 + 16) * (688.4 - 660.1) + (16 + 16) * (660.1 - 626.9) + (16 + -3.2) * (626.9 - 626.9) + (-3.2 + -3.2) * (626.9 - 532) + (-3.2 + 16) * (532 - 532) + (16 + 16) * (532 - 420.2) + (16 + -3.2) * (420.2 - 420.2) + (-3.2 + -3.2) * (420.2 - 322.9) + (-3.2 + 16) * (322.9 - 322.9) + (16 + 16) * (322.9 - 292.4) + (16 + 270.8) * (292.4 - 292.4) + (270.8 + 270.8) * (292.4 - 179.7) + (270.8 + 276.8) * (179.7 - 179.7) + (276.8 + 276.8) * (179.7 - 173.7) + (276.8 + 400.8) * (173.7 - 173.7)) * 0.5 * 0.00694$
SCREENED PORCH <ul style="list-style-type: none"><li>• Non-living area</li><li>• Unfinished Area</li></ul>	189	$-((276.8 + 276.8) * (114.9 - 179.7) + (276.8 + 270.8) * (179.7 - 179.7) + (270.8 + 270.8) * (179.7 - 292.4) + (270.8 + 119.9) * (292.4 - 292.4) + (119.9 + 119.9) * (292.4 - 114.9) + (119.9 + 276.8) * (114.9 - 114.9)) * 0.5 * 0.00694$
DECK <ul style="list-style-type: none"><li>• Non-living area</li><li>• Unfinished Area</li></ul>	454	$-((482.3 + 597.7) * (-0.4 - 36.4) + (597.7 + 597.7) * (36.4 - 292.4) + (597.7 + 566.2) * (292.4 - 292.4) + (566.2 + 549.2) * (292.4 - 283.1) + (549.2 + 532.6) * (283.1 - 273.7) + (532.6 + 492.1) * (273.7 - 266.8) + (492.1 + 451.7) * (266.8 - 273.7) + (451.7 + 435) * (273.7 - 283.1) + (435 + 418) * (283.1 - 292.4) + (418 + 400.8) * (292.4 - 292.4) + (400.8 + 400.8) * (292.4 - 173.7) + (400.8 + 276.8) * (173.7 - 173.7) + (276.8 + 276.8) * (173.7 - 92.1) + (276.8 + 359.5) * (92.1 - 92.1) + (359.5 + 359.5) * (92.1 - 88.1) + (359.5 + 303.2) * (88.1 - 88.1) + (303.2 + 303.2) * (88.1 - 49.6) + (303.2 + 388.9) * (49.6 - 49.6) + (388.9 + 482.3) * (49.6 - -0.4)) * 0.5 * 0.00694$
GARAGE <ul style="list-style-type: none"><li>• Attached Garage</li></ul>	647	$-((683.7 + 683.7) * (476 - 720.8) + (683.7 + 563.8) * (720.8 - 720.8) + (563.8 + 563.8) * (720.8 - 748.3) + (563.8 + 315.6) * (748.3 - 748.3) + (315.6 + 315.6) * (748.3 - 623.1) + (315.6 + 337.6) * (623.1 - 623.1) + (337.6 + 337.6) * (623.1 - 509.7) + (337.6 + 371.7) * (509.7 - 476) + (371.7 + 683.7) * (476 - 476)) * 0.5 * 0.00694$

# 4539 Grove Street, Shawnee, Johnson County, Kansas, United States, 66226

Total area: 4942 sq. ft  
Gross living area: 3041 sq. ft

Finished area: 4020 sq. ft  
Non-standard finished area: 0 sq. ft

## Level 3



Total area: 1658 sq. ft  
Gross living area: 1658 sq. ft

Finished area: 1658 sq. ft  
Non-standard finished area: 0 sq. ft

# 4539 Grove Street, Shawnee, Johnson County, Kansas, United States, 66226

Total area: 4942 sq. ft  
Gross living area: 3041 sq. ft

Finished area: 4020 sq. ft  
Non-standard finished area: 0 sq. ft

## Level 3

Space	Area (sq. ft)	Calculation <small>Coordinate Polygon Area Algorithm using inches</small>
Finished Area	1658	$-\left((400.8 + 400.8) * (229.1 - 261.7) + (400.8 + 468.1) * (261.7 - 261.7) + (468.1 + 468.1) * (261.7 - 292.4) + (468.1 + 611.8) * (292.4 - 292.4) + (611.8 + 611.8) * (292.4 - 637.8) + (611.8 + 538.6) * (637.8 - 637.8) + (538.6 + 538.6) * (637.8 - 754.3) + (538.6 + 355) * (754.3 - 754.3) + (355 + 355) * (754.3 - 701.3) + (355 + 291.6) * (701.3 - 701.3) + (291.6 + 291.6) * (701.3 - 695.3) + (291.6 + 287.6) * (695.3 - 695.3) + (287.6 + 287.6) * (695.3 - 528.1) + (287.6 + 213.4) * (528.1 - 528.1) + (213.4 + 213.4) * (528.1 - 618.4) + (213.4 + 165.3) * (618.4 - 618.4) + (165.3 + 165.3) * (618.4 - 673.1) + (165.3 + 159.3) * (673.1 - 679.1) + (159.3 + 16) * (679.1 - 679.1) + (16 + 16) * (679.1 - 292.4) + (16 + 270.8) * (292.4 - 292.4) + (270.8 + 270.8) * (292.4 - 229.1) + (270.8 + 400.8) * (229.1 - 229.1)) * 0.5 * 0.00694$

# 4539 Grove Street, Shawnee, Johnson County, Kansas, United States, 66226

Total area: 4942 sq. ft  
Gross living area: 3041 sq. ft

Finished area: 4020 sq. ft  
Non-standard finished area: 0 sq. ft

## Property UPD

Data	Value
Structure	1
Unit	1
Level Number	1
Below Grade	true
Level Low Ceiling	false
ADU Indicator	false
Total Area	1258
Finished Area	979
Non-Standard Finished Area	0
Structure	1
Unit	1
Level Number	2
Below Grade	false
Level Low Ceiling	false
ADU Indicator	false
Total Area	2026
Finished Area	1383
Non-Standard Finished Area	0
Structure	1
Unit	1
Level Number	3

# 4539 Grove Street, Shawnee, Johnson County, Kansas, United States, 66226

Total area: 4942 sq. ft  
Gross living area: 3041 sq. ft

Finished area: 4020 sq. ft  
Non-standard finished area: 0 sq. ft

## Property UPD

Data	Value
Below Grade	false
Level Low Ceiling	false
ADU Indicator	false
Total Area	1658
Finished Area	1658
Non-Standard Finished Area	0