



56 Woodside Road

Maplewood, NJ



3

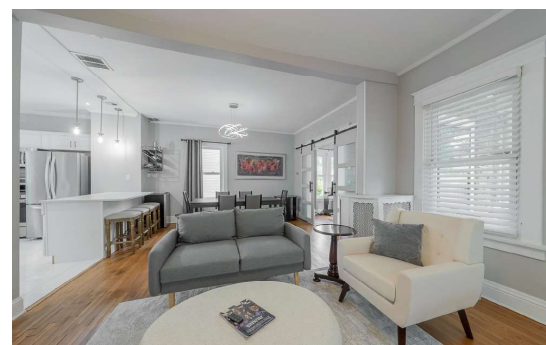


2.1

www.56woodsideroad.com



VICTORIA
CARTER
GROUP



Classic Charm

Set on a deep and level property in one of Essex county's most sought after residential communities, this seven-room colonial – with three bedrooms, 2.1 baths and an open floor plan – offers an exceptional opportunity to the discerning buyer.

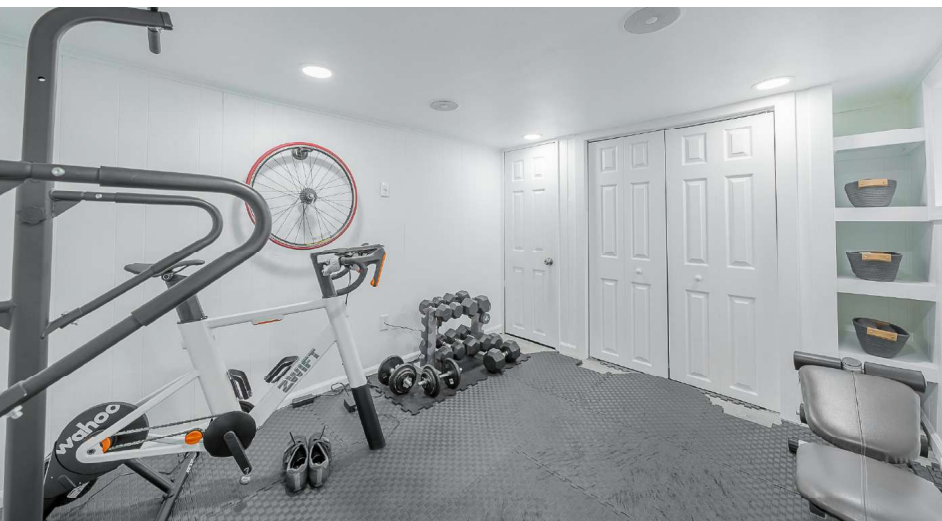
A covered front porch welcomes you to this fine home. Open to the dining room for a spacious flow that brightens and expands both areas, the living room features a portable electric fireplace framed by a pair of large windows. A double barn door opens from the dining room to the den, a sunny retreat courtesy of five additional windows spanning the front and side walls. All three rooms include a hardwood floor and overhead light fixtures. A peninsula counter/breakfast bar, with three pendant light fixtures above, marks the transition from the dining room to the updated kitchen with raised panel cabinets, maintenance-free quartz counter top and a gleaming glass tile backsplash. Stainless steel appliances include a General Electric four-burner-gas range, built-in General Electric microwave, General Electric dishwasher and LG refrigerator with cafe doors and freezer drawer. A tile floor, recessed lighting and undermounted stainless steel sink finish the room. Located off the living room, a powder room completes the first level.

Situated on the second level the primary bedroom features a hardwood floor, two double closets with mirrored doors and built-in storage, crown moulding and an overhead light fixture. Each of the two additional bedrooms also includes a hardwood floor, large closet, crown moulding and overhead lighting. In all three rooms, windows on multiple walls provide comfortable cross breezes. The updated hall bath is equipped with a tile floor and half-wall, shower-over-tub with tile surround, vanity with undermounted sink, lighted medicine cabinet, linen closet and overhead lighting.

Stairs to the partially finished lower level open to a large foyer with convenient second refrigerator, laminate tile floor and recessed lighting. The adjacent exercise/recreation room features a laminate tile floor, built-in storage shelves, closet with built-in retractable TV, built-in Bluetooth audio system and recessed lighting. The second full bath includes a tile floor and half-wall, walk-in shower with tile surround, vanity with integrated sink and recessed lighting. A storage room, utility room and laundry room with tile floor, Samsung washer and dryer, stainless steel sink and recessed lighting complete the lower level.







Highlights

GENERAL

- Seven-room, colonial in a thriving and diverse residential community
- Three bedrooms
- Two full baths; one half-bath
- Updated kitchen
- Open floor plan
- Central air-conditioning
- Hardwood floors throughout
- Partially finished lower level
- Rear deck
- Minutes from town, parks, schools, restaurants, shopping and Midtown Direct commuter train service into Manhattan

FIRST LEVEL

- Living room: hardwood floor; coat closet; portable electric fireplace; crown moulding; overhead light fixture; double hung window, front; two double-hung windows, side; open to dining room; door to powder room; hardwood stairs to second level
- Dining room: hardwood floor; overhead light fixture; double-hung window, side; open to kitchen and living room; double barn door to den
- Den: hardwood floor; overhead light fixture; three double-hung windows, front; two double-hung windows, side
- Kitchen: tile floor; raised panel cabinets with peninsula counter/ breakfast bar; granite counter tops; glass tile backsplash; stainless steel appliances – General Electric four-burner-gas range, built-in Gen-

- eral Electric microwave, General Electric dishwasher and LG refrigerator with cafe doors and freezer drawer; undermounted stainless steel sink; three pendant light fixtures; recessed lighting; two double-hung windows, side; doorway to powder room; open to dining room; doorway to stairs to lower level with egress to rear deck
- Powder room: tile floor; vanity with vessel sink; wall mirror; recessed lighting

SECOND LEVEL

- Center foyer: hardwood floor; overhead light fixture
- Primary bedroom: hardwood floor; two double closets with mirrored doors and built-in storage; crown moulding; overhead light fixture; two double-hung windows, front; double-hung window, side
- Bedroom two: hardwood floor; double closet with built-in storage; crown moulding; lighted ceiling fan; two double-hung windows, front; double-hung window, side
- Bedroom three: hardwood floor; built-in display shelves; closet with mirrored door; overhead light fixture; double-hung window, side; double-hung window, rear
- Full hall bath: tile floor and half-wall; shower-over-tub with tile surround; vanity with undermounted sink; lighted medicine cabinet; linen closet; overhead lighting; double-

hung window, side

LOWER LEVEL

- Foyer: laminate tile floor; second refrigerator; recessed lighting; doorways to recreation/exercise room and storage room; casement window, side; casement window, rear; hardwood stairs to first level
- Exercise/recreation room: laminate tile floor; built-in storage shelves; closet with built-in retractable TV; built-in Bluetooth audio system recessed lighting; casement window, side
- Full bath: tile floor and half-wall; walk-in shower with tile surround; vanity with integrated sink; recessed lighting; casement window, side
- Laundry room: laminate tile floor; Samsung washer and dryer; stainless steel sink; recessed lighting
- Storage room: laminate tile floor; two closets; overhead light fixture; casement window side; doorways to foyer, bath, laundry room and utility room
- Utility room

EXTERIOR

- Aluminum siding and stone exterior
- Covered front porch
- Composite rear deck: access to kitchen
- Concrete walkway
- Asphalt driveway
- Storage shed
- Deep and level property: partially fenced

IMPROVEMENTS

- Installed new gutters – 2026
- Installed new roof – 2025
- Updated lighting in three bedrooms – 2025
- Installed new LED lighting and vanity in bathroom – 2025
- Installed new ejector pumps – 2025
- Installed double barn door in dining room – 2024
- Installed new sump pump – 2023
- Installed Alexa compatible Smart Home system: installed Ring Home Security window alarms, door sensors, outdoor cameras and outdoor spotlights; installed Schlage keyless entry system; installed Nest thermostats; installed Lutron WiFi indoor lighting – 2023-2026
- Updated kitchen – 2021
- Updated powder room – 2021
- Remodeled first level for open floor plan – 2021
- Finished basement and installed second full bath – 2021

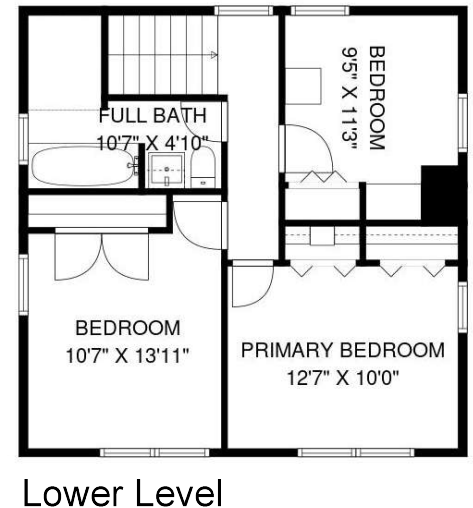
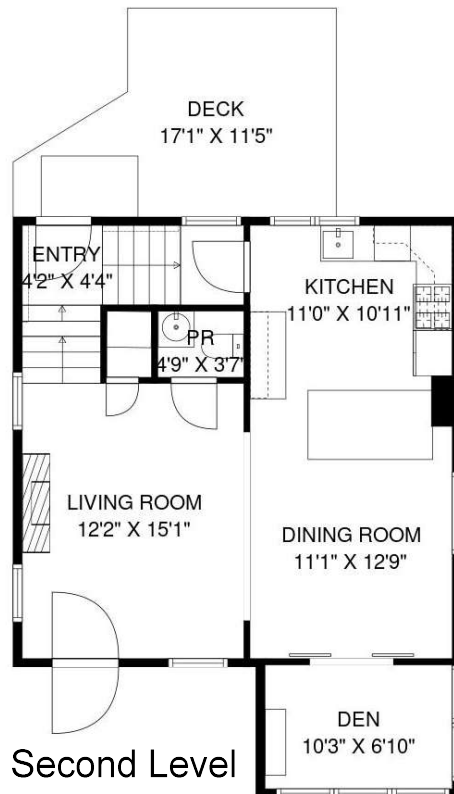
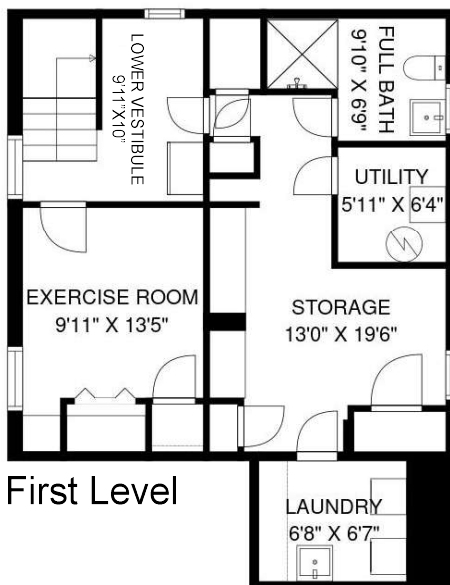
2025 ASSESSMENTS/TAXES

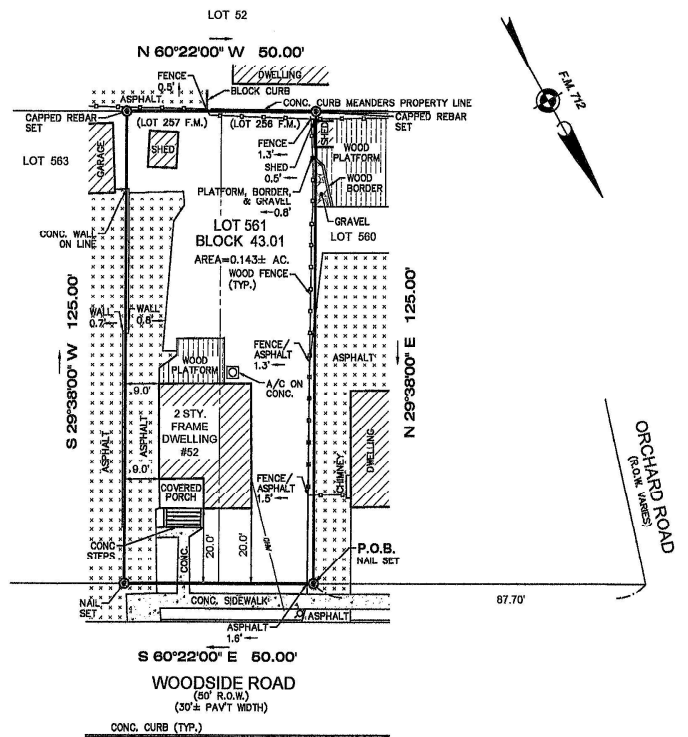
- Land: \$224,000
- Improvements: \$343,800
- Total: \$567,800
- 2025 Taxes: \$13,632

AN IDEAL LOCATION

Renowned for its Village, a collection of quaint shops and restaurants, Maplewood is a thriving community where residents enjoy fine dining, local shopping and exceptional recreational and cultural facilities. Named by New York Magazine as one of the "Top Ten Affordable Suburbs in the New York Metro Area," Maplewood combines a small-town life-style with city conveniences, and yet is only a short commute via Midtown Direct trains into New York City and fifteen miles from Newark Liberty International Airport.

Floor Plans





Victoria Carter
 Broker/Sales Associate

Cell: 973-220-3050
 victoria@victoriacarter.com
 www.victoriacarter.com



Weichert, Realtors

Weichert