



# 280 Western Drive North

South Orange, NJ

[www.280westerndrivenorth.com](http://www.280westerndrivenorth.com)



4



3.2

2,888 Sq. Ft.



VICTORIA  
CARTER  
GROUP



# Warm and Inviting

Set atop a gentle knoll in a quiet South Orange neighborhood, this classic center hall colonial – with four bedrooms, 3.2 baths, a finished lower level, elevated rear deck and attached one-car garage – balances traditional charm with flexible modern living.



A center foyer, with hardwood floor, crown moulding and overhead light fixture, welcome you to this fine home. Broad archways open to the living room and dining room, doorways lead to the kitchen and powder room and hardwood stairs run to the second level.



A decorative fireplace, with tile hearth and brick surround, serves as the focal point of the front-to-back formal living room. Set in the front and rear walls, large windows provide soft ambient light. A pair of wall sconces, crown moulding, recessed lighting and a double door leading to the family room finish the room.

A sunny first-level escape, the family room features floor-to-ceiling bookshelves, recessed lighting and eight large windows spread across the three exterior walls.



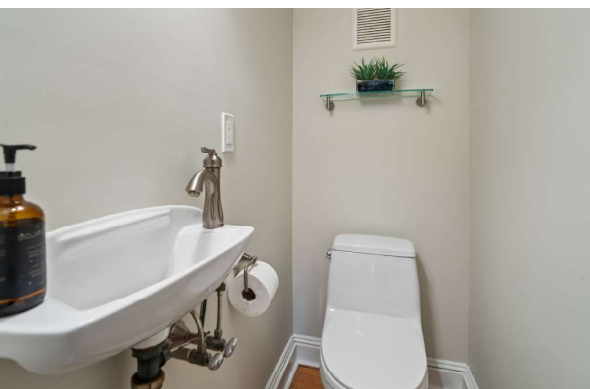
The formal dining room includes crown moulding, a contemporary chandelier and windows with front and side exposure. A doorway accesses the kitchen.

The eat-in kitchen features raised panel cabinets with honed granite counter tops and a tile backsplash. Stainless steel appliances include a five-burner gas range with two ovens, built-in microwave, Bosch dishwasher and refrigerator with cafe doors and water/ice dispenser. A double farm sink, recessed lighting and breakfast area, with three large windows overlooking the back yard, provide just the right finishing touches.



The adjacent rear vestibule provides convenient access to the elevated rear deck and stairs running to the lower level.

Hardwood floors extend throughout the first level.





# Private Retreats

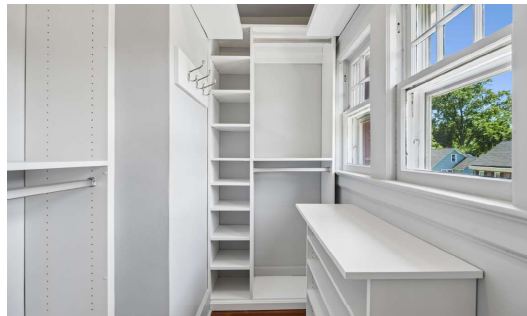
Situated on the second level, the primary suite is composed of a bedroom and private full bath. The bedroom features a walk-in closet with built-in storage, crown moulding and an overhead light fixture. Windows on two walls provide comfortable cross breezes. The en suite bath is equipped with a tile floor and half-wall, glass-enclosed shower with subway tile surround and both hand-held and wall-mounted shower heads, vanity with integrated sink, lighted medicine cabinet and light bar.

Bedroom two includes a closet, lighted ceiling fan and windows to the side and rear.



The third bedroom has a walk-in closet, crown moulding, overhead light fixture and windows on two walls.

The full hall bath contains a tile floor, subway tile half-wall, shower-over-tub with tile surround, vanity, lighted medicine cabinet, light bar and linen closet.

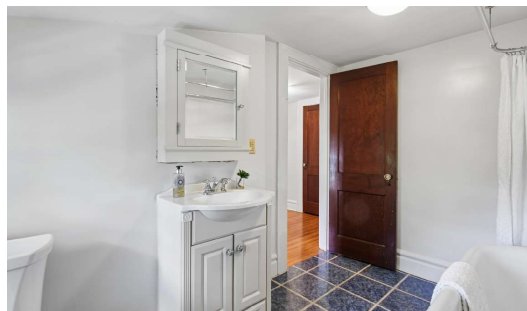


A center foyer, with linen closet, completes the second level.

Located on the third level and readily adaptable for use as a private office or guest room, the fourth bedroom presents a hardwood floor, overhead light fixture and windows to the front and side.

The third full bath is equipped with a tile floor, free-standing tub with shower, vanity, medicine cabinet and overhead light fixture.

A center foyer, with cedar closet and walk-in access to attic storage, completes this level.



# The Finished Lower Level

Equally well suited for media, play, fitness, work or casual entertaining, the recreation room features a wood grain tile floor and recessed lighting.

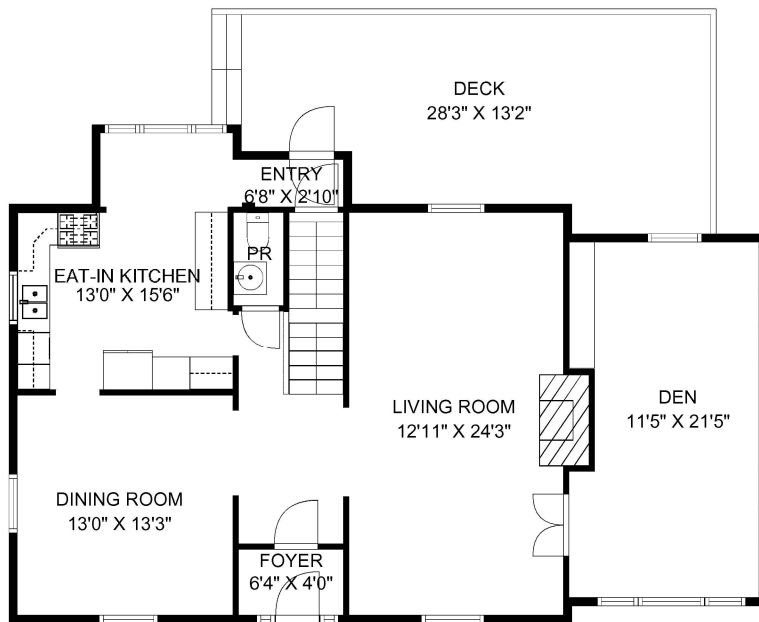
The adjacent powder room is equipped with a tile floor, pedestal sink, medicine cabinet and recessed lighting.

A laundry closet, with a washer, dryer and second refrigerator, add everyday convenience

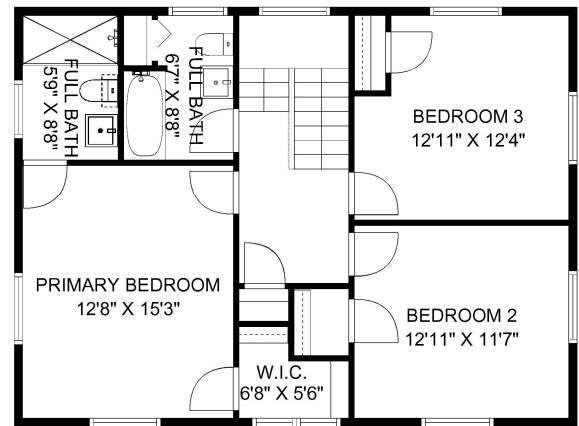
Two large storage rooms and a one-car garage complete the lower level.



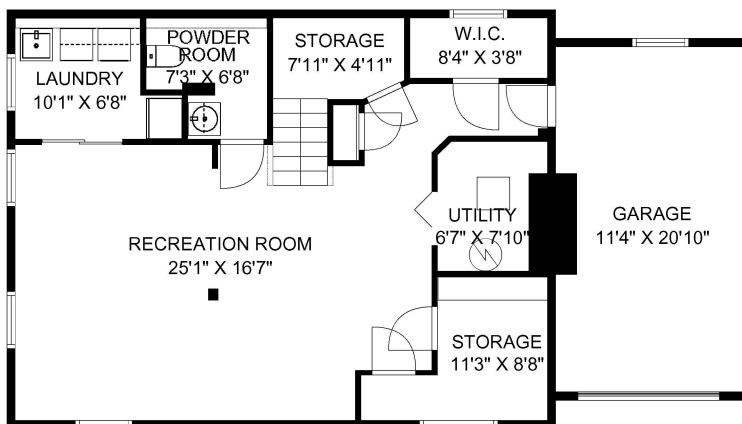
## Floor Plan



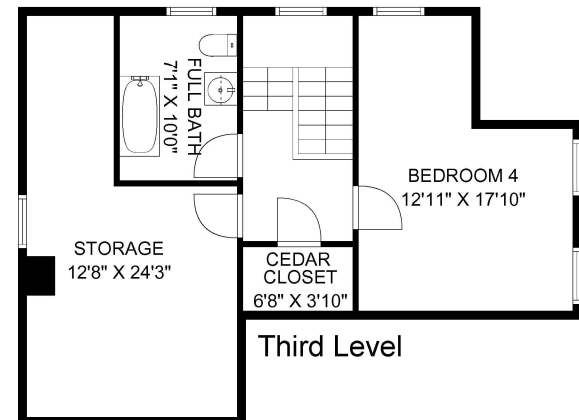
First Level



Second Level



Lower Level



Third Level

NOT TO SCALE: Floor plans are for illustration purposes only.  
Room positions and dimensions are approximate and should be independently measured for accuracy.

# Highlights

## GENERAL

- Nine-room center hall colonial in a thriving and diverse residential community
- Four bedrooms including a primary suite
- Three full baths, two half-baths
- Eat-in kitchen with honed granite counter tops
- Integrated security system
- Elevated rear deck
- Attached one-car garage
- Minutes from town, parks, schools, restaurants, shopping and Midtown Direct commuter train service into Manhattan

## FIRST LEVEL

- Entry vestibule: hardwood floor; crown moulding; overhead light fixture; French door to center foyer
- Center foyer: hardwood floor; overhead light fixture; crown moulding; archways to living room and dining room; doorways to kitchen and powder room; hardwood stairs to second level
- Living room (front-to-back): hardwood floor; decorative fireplace with tile hearth and brick surround; two wall scones; crown moulding; recessed lighting; double-hung window, front; double-hung window, rear; double door to family room; archway to center foyer
- Family room: hardwood floor; built-in floor-to-ceiling bookshelves; recessed lighting; picture window, two double-hung windows, front; four double-hung windows, side; double-hung window, rear; double door to living room
- Dining room: hardwood floor; crown moulding; contemporary chandelier; double-hung window, front; double-hung window, side; doorway to kitchen; archway to center foyer
- Eat-in kitchen: hardwood floor; raised panel cabinets; honed granite counter tops; tile backsplash; stainless steel appliances – five-burner gas range with two ovens, built-in microwave, Bosch dishwasher and refrigerator with cafe doors and water/ice dispenser; double farm sink; pendant light fixture; recessed

- lighting; double-hung window, side; open to breakfast nook; doorway to rear vestibule
- Breakfast nook: hardwood floor; recessed lighting; three double-hung windows, rear; open to kitchen
- Powder room: hardwood floor; wall sink; light bar
- Rear vestibule: hardwood floor; doors to kitchen and stairs to lower level; egress to elevated rear deck

## SECOND LEVEL

- Center foyer: hardwood floor; linen closet; overhead light fixture
- Bedroom one (primary suite): hardwood floor; walk-in closet with built-in storage; crown moulding; overhead light fixture; double-hung window, front; double-hung window, side; access to en suite bath
- Private full bath (primary suite): tile floor and half-wall; glass-enclosed shower with subway tile surround and handheld and wall-mounted shower heads; vanity with integrated sink; lighted medicine cabinet; light bar; double-hung window, side
- Bedroom two: hardwood floor; closet; lighted ceiling fan; double-hung window, side; double-hung window, rear
- Bedroom three: hardwood floor; walk-in closet; crown moulding; overhead light fixture; double-hung window, front; double-hung window, side
- Full hall bath: tile floor; subway tile half-wall; shower-over-tub with tile surround; vanity; lighted medicine cabinet; light bar; linen closet; double-hung window, rear

## THIRD LEVEL

- Center foyer: hardwood floor; cedar closet; overhead light fixture; casement window, side
- Bedroom four: hardwood floor; overhead light fixture; double-hung window, front; two double-hung windows, side
- Full bath: tile floor; free-standing tub with shower; vanity; medicine cabinet; overhead light fixture; double-hung window,

- rear
- Walk-in attic

## LOWER LEVEL

- Recreation room: wood grain tile floor; recessed lighting; four casement windows
- Powder room: tile floor; pedestal sink; medicine cabinet; recessed lighting
- Laundry closet; washer and dryer; refrigerator
- One-car garage
- Two storage rooms

## EXTERIOR

- Wood plank siding
- Covered front entry
- Elevated rear deck: access to rear vestibule
- Asphalt driveway with Cottage Stone concrete retaining wall
- Professionally landscaped: established lawns; decorative plantings

## IMPROVEMENTS

- Installed Jacuzzi – 2023
- Updated primary bath – 2022
- Updated second level hall bath – 2022
- Installed custom storage system in primary bedroom closet – 2022

- Installed custom linen closet – 2022
- Installed custom closet in hall bath – 2022

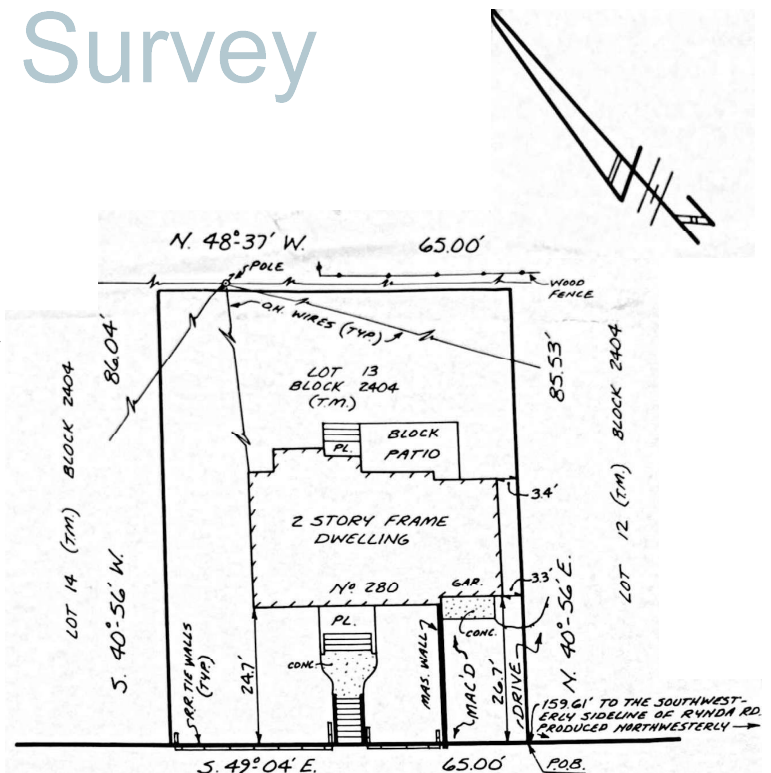
## 2025 ASSESSMENTS/TAXES

- Land: \$383,600
- Improvements: \$556,200
- Total: \$939,800
- 2025 taxes: \$24,284

## AN IDEAL LOCATION

• This fine home is located just minutes away from the South Orange train station and Meadowland Park with tennis courts, three swimming pools, handball and basketball courts, baseball fields, a community center and bike paths. In the summer, the park hosts weekly live concerts and family movie nights. Home to Seton Hall University and the South Orange Performing Arts Center, South Orange is a thriving and diverse community – with a vibrant business center including custom boutiques, galleries and gourmet restaurants – and all just 20 minutes from Newark's Liberty International Airport and close to major highways.

# Survey



WESTERN (40') DRIVE N.



Thomas Carragher  
Sales Associate

415-999-7412  
thomas@victoriacarter.com  
www.victoriacarter.com

Victoria Carter  
Broker/Sales Associate

973-220-3050  
victoria@victoriacarter.com  
www.victoriacarter.com



Weichert, Realtors • Short Hills Office

**Weichert**