

## Home data report

26731 North Bitterroot Court, Athol, Kootenai County, Idaho, United States, 83801



**Total Area: 2146 sq. ft**

1st Floor: 1027 sq. ft, 2nd Floor: 0 sq. ft, 3rd Floor: 0 sq. ft, 4th Floor: 1119 sq. ft

Excluded: W.I.C. 20 sq. ft, Storage 194 sq. ft, Room 1088 sq. ft, Stable 358 sq. ft, Garage 1427 sq. ft, Carport 533 sq. ft, Undefined 18 sq. ft, Porch 427 sq. ft, Deck 516 sq. ft, Walls: 342 sq. ft

## Property summary

 **4** Floors

 **4** Bedrooms

 **2** Bathrooms

Home data report

**26731 North Bitterroot Court, Athol, Kootenai County, Idaho,  
United States, 83801**



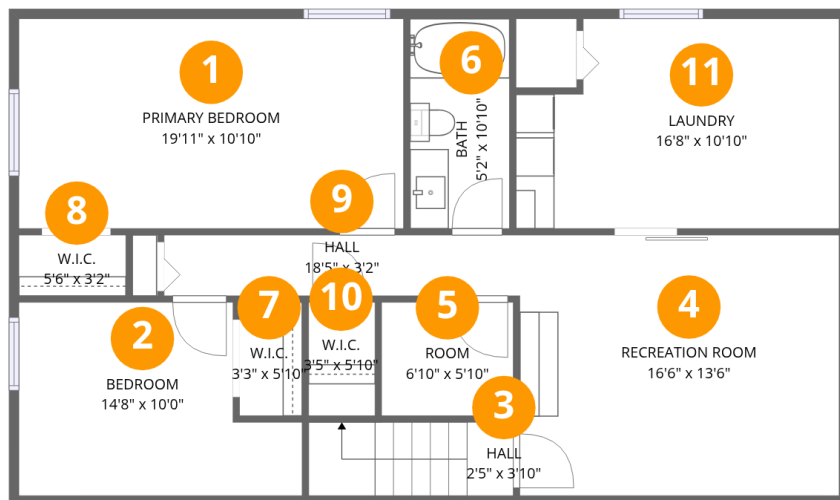
**1**  
Half baths



**2**  
Garages

Home data report

26731 North Bitterroot Court, Athol, Kootenai County, Idaho, United States, 83801



## Room dimensions

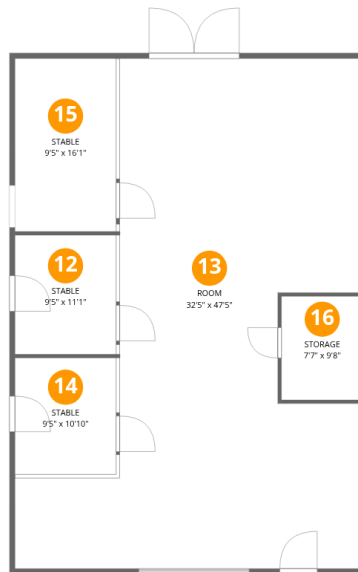
Floor 1

Total:1027sqft Excluded: 20sqft

#		Dimensions	sqft	Counted as living area
1	Primary Bedroom	19'11" x 10'10"	216 sq. ft	Yes
2	Bedroom	14'8" x 10'0"	124 sq. ft	Yes
3	Hall	2'5" x 3'10"	40 sq. ft	Yes
4	Recreation Room	16'6" x 13'6"	223 sq. ft	Yes
5	Room	6'10" x 5'10"	40 sq. ft	Yes
6	Bath	5'2" x 10'10"	56 sq. ft	Yes
7	W.I.C.	3'3" x 5'10"	19 sq. ft	Yes
8	W.I.C.	5'6" x 3'2"	17 sq. ft	Yes
9	Hall	18'5" x 3'2"	58 sq. ft	Yes
10	W.I.C.	3'5" x 5'10"	20 sq. ft	No
11	Laundry	16'8" x 10'10"	168 sq. ft	Yes

Home data report

26731 North Bitterroot Court, Athol, Kootenai County, Idaho, United States, 83801



## Room dimensions

Floor 2

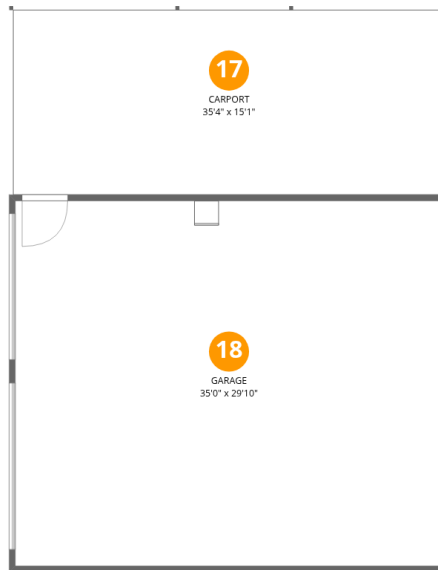
Total:0sqft

Excluded: 1528sqft

#		Dimensions	sqft	Counted as living area
12	Stable	9'5" x 11'1"	104 sq. ft	No
13	Room	32'5" x 47'5"	1088 sq. ft	No
14	Stable	9'5" x 10'10"	102 sq. ft	No
15	Stable	9'5" x 16'1"	152 sq. ft	No
16	Storage	7'7" x 9'8"	73 sq. ft	No

Home data report

26731 North Bitterroot Court, Athol, Kootenai County, Idaho, United States, 83801



## Room dimensions

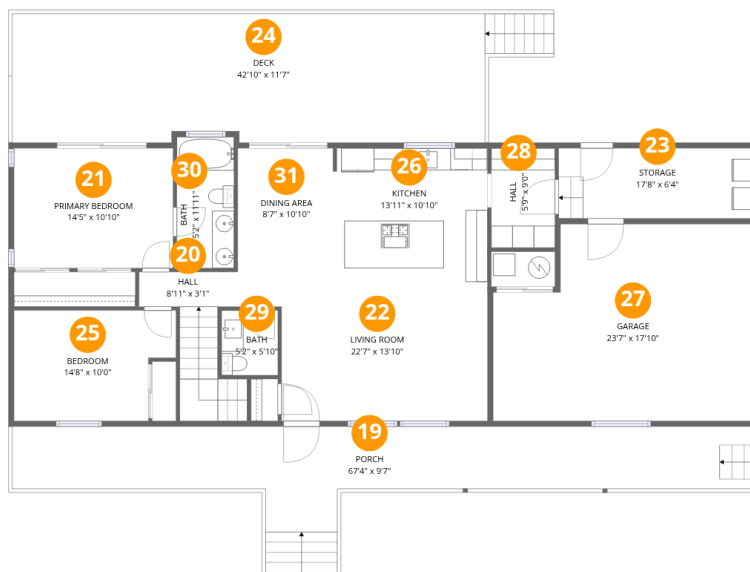
Floor 3

Total:0sqft

Excluded: 1577sqft

#		Dimensions	sqft	Counted as living area
17	Carport	35'4" x 15'1"	533 sq. ft	No
18	Garage	35'0" x 29'10"	1044 sq. ft	No

26731 North Bitterroot Court, Athol, Kootenai County, Idaho, United States, 83801



Room dimensions

Floor 4

Total:1119sqft Excluded: 1456sqft

#		Dimensions	sqft	Counted as living area
19	Porch	67'4" x 9'7"	427 sq. ft	No
20	Hall	8'11" x 3'1"	70 sq. ft	Yes
21	Primary Bedroom	14'5" x 10'10"	156 sq. ft	Yes
22	Living Room	22'7" x 13'10"	272 sq. ft	Yes
23	Storage	17'8" x 6'4"	112 sq. ft	No
24	Deck	42'10" x 11'7"	515 sq. ft	No
25	Bedroom	14'8" x 10'0"	132 sq. ft	Yes
26	Kitchen	13'11" x 10'10"	151 sq. ft	Yes
27	Garage	23'7" x 17'10"	383 sq. ft	No
28	Hall	5'9" x 9'0"	52 sq. ft	Yes
29	Bath	5'2" x 5'10"	30 sq. ft	Yes

Home data report

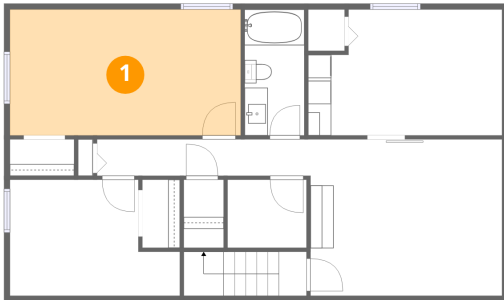
**26731 North Bitterroot Court, Athol, Kootenai County, Idaho,  
United States, 83801**

#		Dimensions	sqft	Counted as living area
30	Bath	5'2" x 11'11"	62 sq. ft	Yes
31	Dining Area	8'7" x 10'10"	93 sq. ft	Yes

26731 North Bitterroot Court, Athol, Kootenai County, Idaho,  
United States, 83801

**1** Floor 1 - Primary Bedroom

---

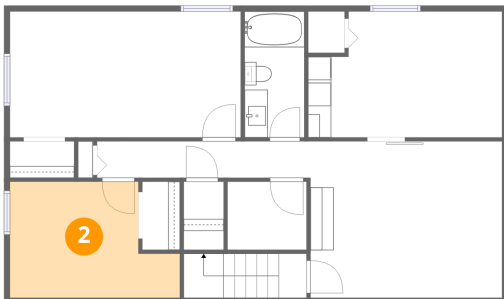


Dimensions: 19'11" x 10'10"  
Area: 216 sq. ft  
Counted as living area: Yes

Heated: Yes  
Finished: Yes  
Enclosed: Yes  
Contiguous: Yes  
Permitted: Yes  
Wet space: No  
Addition: No  
Conversion: No

**2** Floor 1 - Bedroom

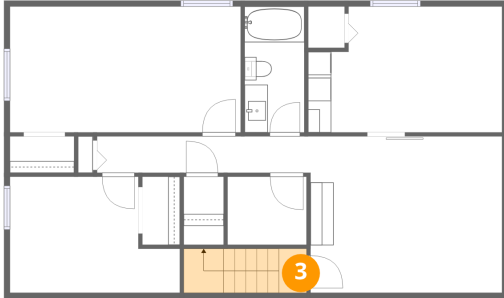
---



Dimensions: 14'8" x 10'0"  
Area: 124 sq. ft  
Counted as living area: Yes

Heated: Yes  
Finished: Yes  
Enclosed: Yes  
Contiguous: Yes  
Permitted: Yes  
Wet space: No  
Addition: No  
Conversion: No

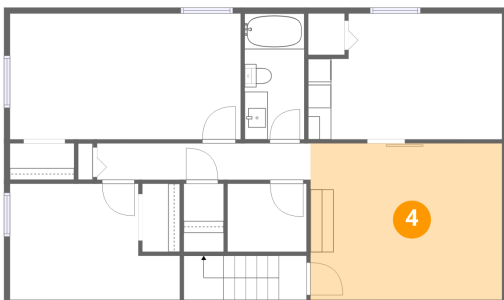
### 3 Floor 1 - Hall



Dimensions: 2'5" x 3'10"  
Area: 40 sq. ft  
Counted as living area: Yes

Heated: Yes  
Finished: Yes  
Enclosed: Yes  
Contiguous: Yes  
Permitted: Yes  
Wet space: No  
Addition: No  
Conversion: No

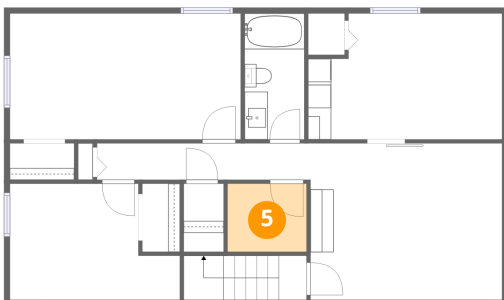
### 4 Floor 1 - Recreation Room



Dimensions: 16'6" x 13'6"  
Area: 223 sq. ft  
Counted as living area: Yes

Heated: Yes  
Finished: Yes  
Enclosed: Yes  
Contiguous: Yes  
Permitted: Yes  
Wet space: No  
Addition: No  
Conversion: No

### 5 Floor 1 - Room

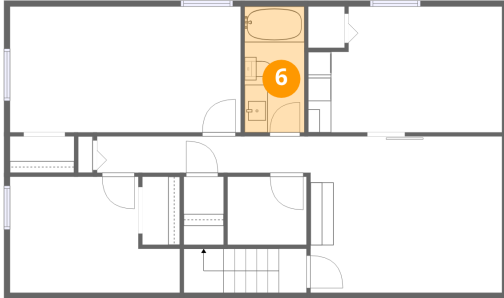


Dimensions: 6'10" x 5'10"  
Area: 40 sq. ft  
Counted as living area: Yes

Heated: Yes  
Finished: Yes  
Enclosed: Yes  
Contiguous: Yes  
Permitted: Yes  
Wet space: No  
Addition: No  
Conversion: No

26731 North Bitterroot Court, Athol, Kootenai County, Idaho,  
United States, 83801

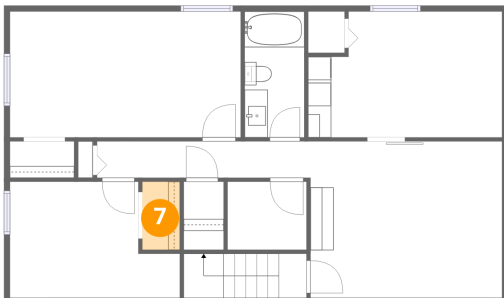
**6** Floor 1 - Bath



Dimensions: 5'2" x 10'10"  
Area: 56 sq. ft  
Counted as living area: Yes

Heated: Yes  
Finished: Yes  
Enclosed: Yes  
Contiguous: Yes  
Permitted: Yes  
Wet space: Yes  
Addition: No  
Conversion: No

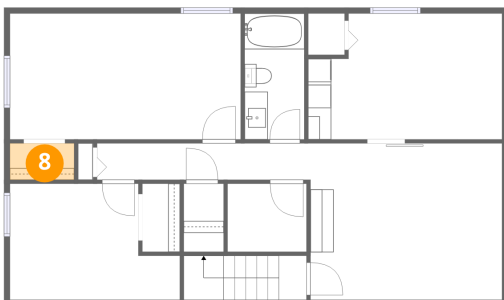
**7** Floor 1 - W.I.C.



Dimensions: 3'3" x 5'10"  
Area: 19 sq. ft  
Counted as living area: Yes

Heated: Yes  
Finished: Yes  
Enclosed: Yes  
Contiguous: Yes  
Permitted: Yes  
Wet space: No  
Addition: No  
Conversion: No

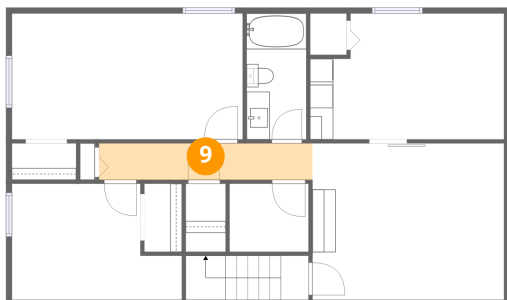
**8** Floor 1 - W.I.C.



Dimensions: 5'6" x 3'2"  
Area: 17 sq. ft  
Counted as living area: Yes

Heated: Yes  
Finished: Yes  
Enclosed: Yes  
Contiguous: Yes  
Permitted: Yes  
Wet space: No  
Addition: No  
Conversion: No

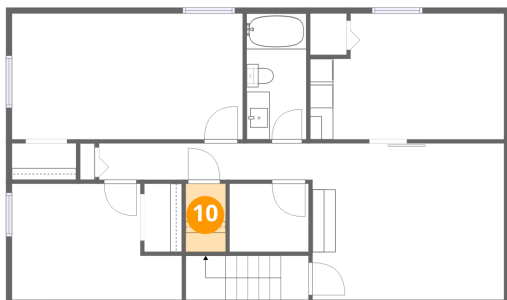
**9** Floor 1 - Hall



Dimensions: 18'5" x 3'2"  
Area: 58 sq. ft  
Counted as living area: Yes

Heated: Yes  
Finished: Yes  
Enclosed: Yes  
Contiguous: Yes  
Permitted: Yes  
Wet space: No  
Addition: No  
Conversion: No

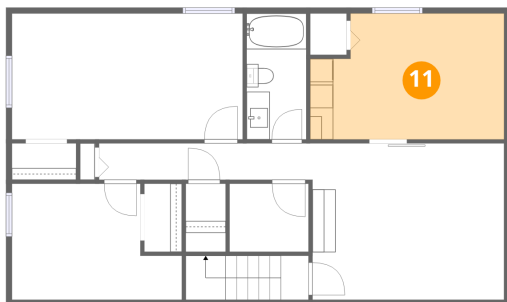
**10** Floor 1 - W.I.C.



Dimensions: 3'5" x 5'10"  
Area: 20 sq. ft  
Counted as living area: No

Heated: Yes  
Finished: No  
Enclosed: Yes  
Contiguous: Yes  
Permitted: Yes  
Wet space: No  
Addition: No  
Conversion: No

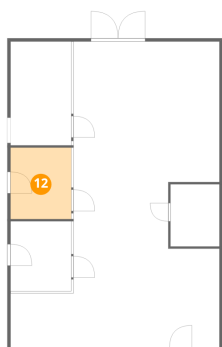
**11** Floor 1 - Laundry



Dimensions: 16'8" x 10'10"  
Area: 168 sq. ft  
Counted as living area: Yes

Heated: Yes  
Finished: Yes  
Enclosed: Yes  
Contiguous: Yes  
Permitted: Yes  
Wet space: No  
Addition: No  
Conversion: No

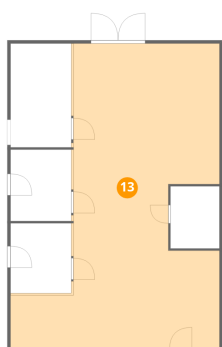
**12** Floor 2 - Stable



Dimensions: 9'5" x 11'1"  
Area: 104 sq. ft  
Counted as living area: No

Heated: No  
Finished: No  
Enclosed: No  
Contiguous: Yes  
Permitted: Yes  
Wet space: No  
Addition: No  
Conversion: No

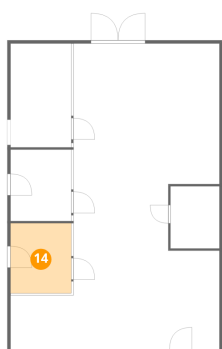
**13** Floor 2 - Room



Dimensions: 32'5" x 47'5"  
Area: 1088 sq. ft  
Counted as living area: No

Heated: Yes  
Finished: No  
Enclosed: Yes  
Contiguous: Yes  
Permitted: Yes  
Wet space: No  
Addition: No  
Conversion: No

**14** Floor 2 - Stable

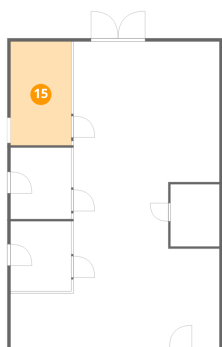


Dimensions: 9'5" x 10'10"  
Area: 102 sq. ft  
Counted as living area: No

Heated: No  
Finished: No  
Enclosed: No  
Contiguous: Yes  
Permitted: Yes  
Wet space: No  
Addition: No  
Conversion: No

26731 North Bitterroot Court, Athol, Kootenai County, Idaho,  
United States, 83801

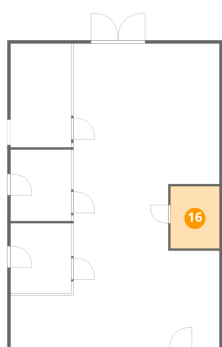
**15** Floor 2 - Stable



Dimensions: 9'5" x 16'1"  
Area: 152 sq. ft  
Counted as living area: No

Heated: No  
Finished: No  
Enclosed: No  
Contiguous: Yes  
Permitted: Yes  
Wet space: No  
Addition: No  
Conversion: No

**16** Floor 2 - Storage



Dimensions: 7'7" x 9'8"  
Area: 73 sq. ft  
Counted as living area: No

Heated: No  
Finished: No  
Enclosed: No  
Contiguous: Yes  
Permitted: Yes  
Wet space: No  
Addition: No  
Conversion: No

**17** Floor 3 - Carport

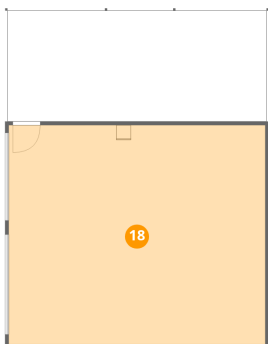


Dimensions: 35'4" x 15'1"  
Area: 533 sq. ft  
Counted as living area: No

Heated: No  
Finished: Yes  
Enclosed: No  
Contiguous: Yes  
Permitted: Yes  
Wet space: No  
Addition: No  
Conversion: No

26731 North Bitterroot Court, Athol, Kootenai County, Idaho, United States, 83801

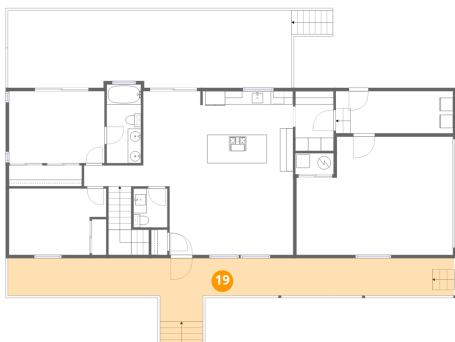
### 18 Floor 3 - Garage



Dimensions: 35'0" x 29'10"  
Area: 1044 sq. ft  
Counted as living area: No

Heated: No  
Finished: No  
Enclosed: Yes  
Contiguous: Yes  
Permitted: Yes  
Wet space: No  
Addition: No  
Conversion: No

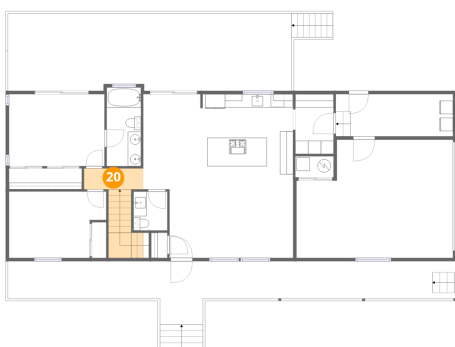
### 19 Floor 4 - Porch



Dimensions: 67'4" x 9'7"  
Area: 427 sq. ft  
Counted as living area: No

Heated: No  
Finished: No  
Enclosed: No  
Contiguous: Yes  
Permitted: Yes  
Wet space: No  
Addition: No  
Conversion: No

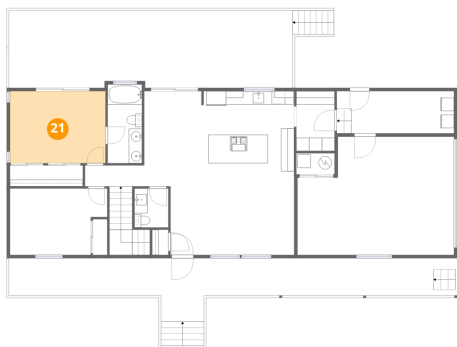
### 20 Floor 4 - Hall



Dimensions: 8'11" x 3'1"  
Area: 70 sq. ft  
Counted as living area: Yes

Heated: Yes  
Finished: Yes  
Enclosed: Yes  
Contiguous: Yes  
Permitted: Yes  
Wet space: No  
Addition: No  
Conversion: No

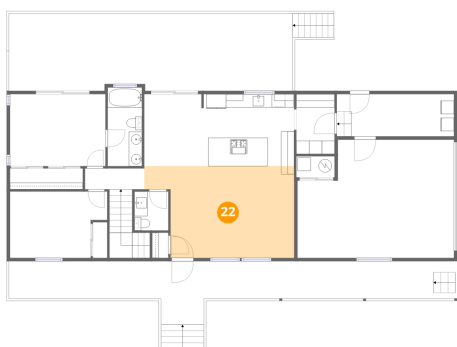
### 21 Floor 4 - Primary Bedroom



Dimensions: 14'5" x 10'10"  
Area: 156 sq. ft  
Counted as living area: Yes

Heated: Yes  
Finished: Yes  
Enclosed: Yes  
Contiguous: Yes  
Permitted: Yes  
Wet space: No  
Addition: No  
Conversion: No

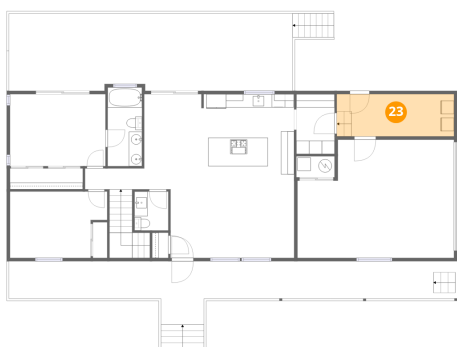
### 22 Floor 4 - Living Room



Dimensions: 22'7" x 13'10"  
Area: 272 sq. ft  
Counted as living area: Yes

Heated: Yes  
Finished: Yes  
Enclosed: Yes  
Contiguous: Yes  
Permitted: Yes  
Wet space: No  
Addition: No  
Conversion: No

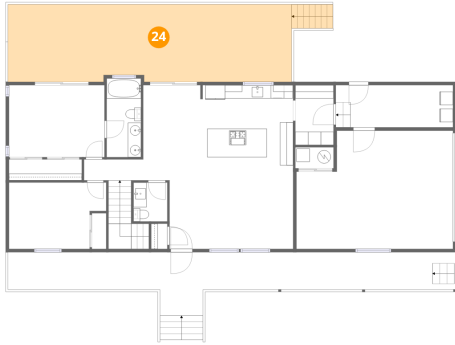
### 23 Floor 4 - Storage



Dimensions: 17'8" x 6'4"  
Area: 112 sq. ft  
Counted as living area: No

Heated: No  
Finished: No  
Enclosed: No  
Contiguous: Yes  
Permitted: Yes  
Wet space: No  
Addition: No  
Conversion: No

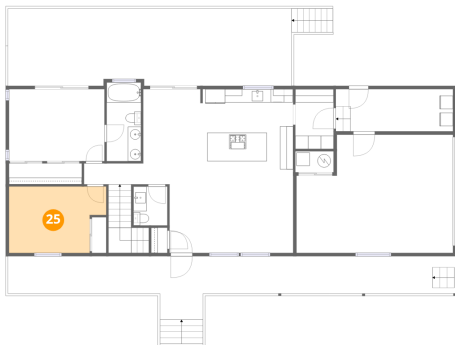
**24** Floor 4 - Deck



Dimensions: 42'10" x 11'7"  
Area: 515 sq. ft  
Counted as living area: No

Heated: No  
Finished: No  
Enclosed: No  
Contiguous: Yes  
Permitted: Yes  
Wet space: No  
Addition: No  
Conversion: No

**25** Floor 4 - Bedroom



Dimensions: 14'8" x 10'0"  
Area: 132 sq. ft  
Counted as living area: Yes

Heated: Yes  
Finished: Yes  
Enclosed: Yes  
Contiguous: Yes  
Permitted: Yes  
Wet space: No  
Addition: No  
Conversion: No

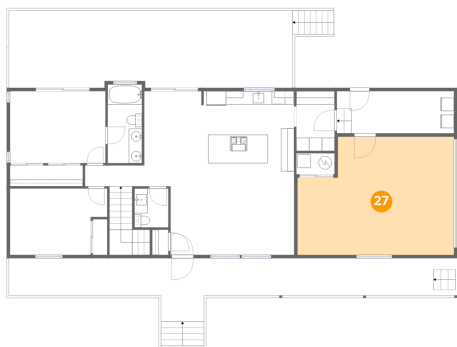
**26** Floor 4 - Kitchen



Dimensions: 13'11" x 10'10"  
Area: 151 sq. ft  
Counted as living area: Yes

Heated: Yes  
Finished: Yes  
Enclosed: Yes  
Contiguous: Yes  
Permitted: Yes  
Wet space: No  
Addition: No  
Conversion: No

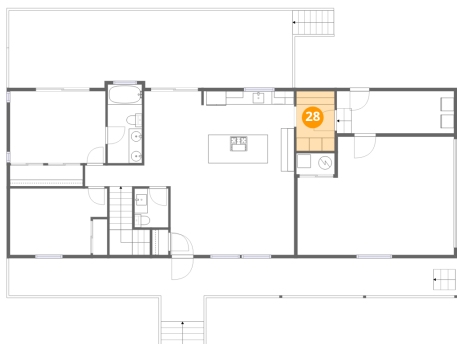
### 27 Floor 4 - Garage



Dimensions: 23'7" x 17'10"  
Area: 383 sq. ft  
Counted as living area: No

Heated: No  
Finished: No  
Enclosed: Yes  
Contiguous: Yes  
Permitted: Yes  
Wet space: No  
Addition: No  
Conversion: No

### 28 Floor 4 - Hall



Dimensions: 5'9" x 9'0"  
Area: 52 sq. ft  
Counted as living area: Yes

Heated: Yes  
Finished: Yes  
Enclosed: Yes  
Contiguous: Yes  
Permitted: Yes  
Wet space: No  
Addition: No  
Conversion: No

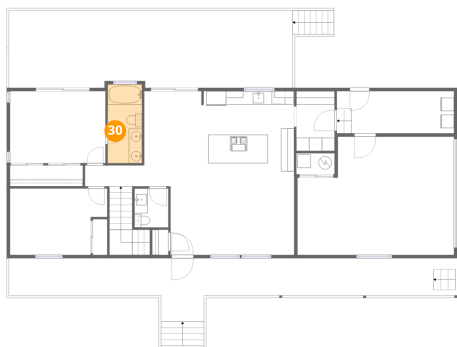
### 29 Floor 4 - Bath



Dimensions: 5'2" x 5'10"  
Area: 30 sq. ft  
Counted as living area: Yes

Heated: Yes  
Finished: Yes  
Enclosed: Yes  
Contiguous: Yes  
Permitted: Yes  
Wet space: Yes  
Addition: No  
Conversion: No

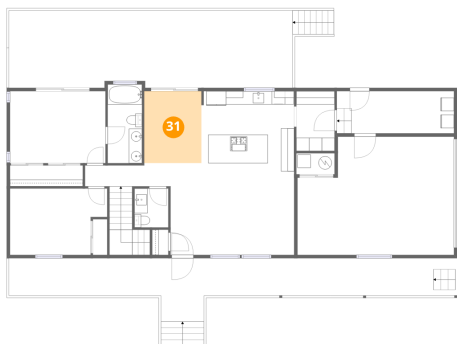
**30** Floor 4 - Bath



Dimensions: 5'2" x 11'11"  
Area: 62 sq. ft  
Counted as living area: Yes

Heated: Yes  
Finished: Yes  
Enclosed: Yes  
Contiguous: Yes  
Permitted: Yes  
Wet space: Yes  
Addition: No  
Conversion: No

**31** Floor 4 - Dining Area



Dimensions: 8'7" x 10'10"  
Area: 93 sq. ft  
Counted as living area: Yes

Heated: Yes  
Finished: Yes  
Enclosed: Yes  
Contiguous: Yes  
Permitted: Yes  
Wet space: No  
Addition: No  
Conversion: No