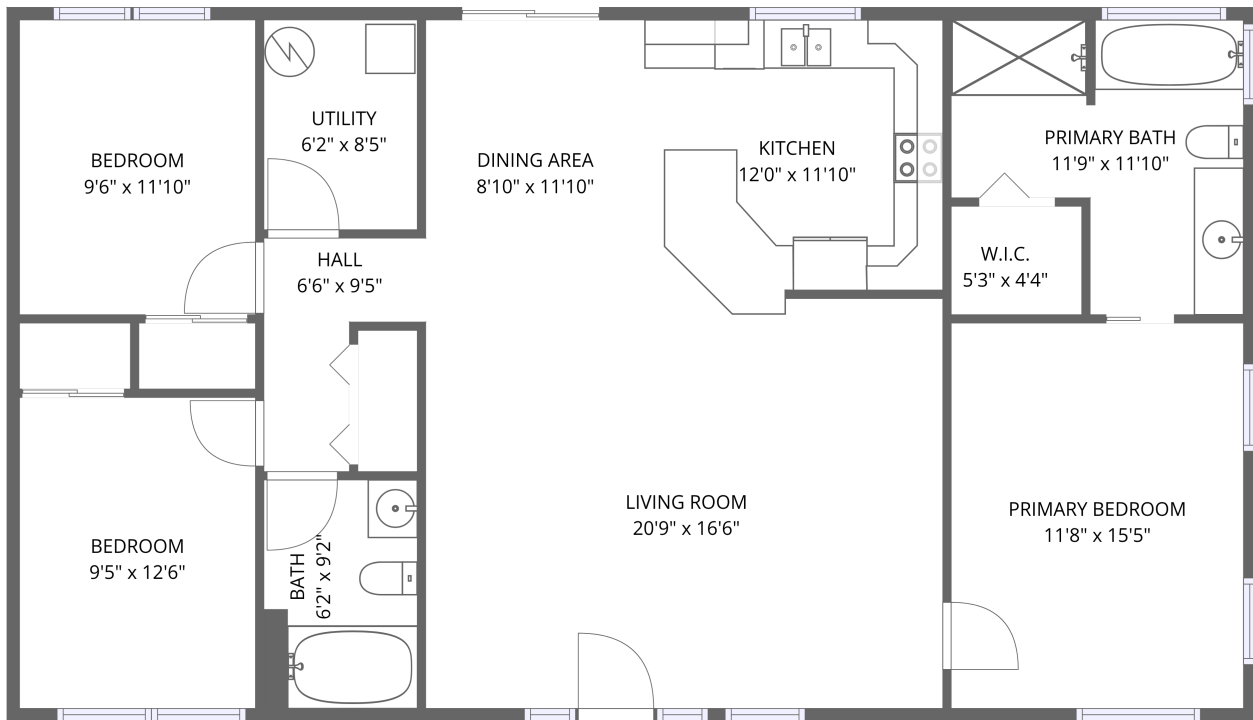


Home data report

7839 King William Avenue, Aylett, Virginia 23009, United States



1st floor

PORCH
27'7" x 5'5"


Total Area: 1359 sq. ft

1st Floor: 1359 sq. ft

Excluded: Porch 149 sq. ft, Walls: 77 sq. ft

Property summary

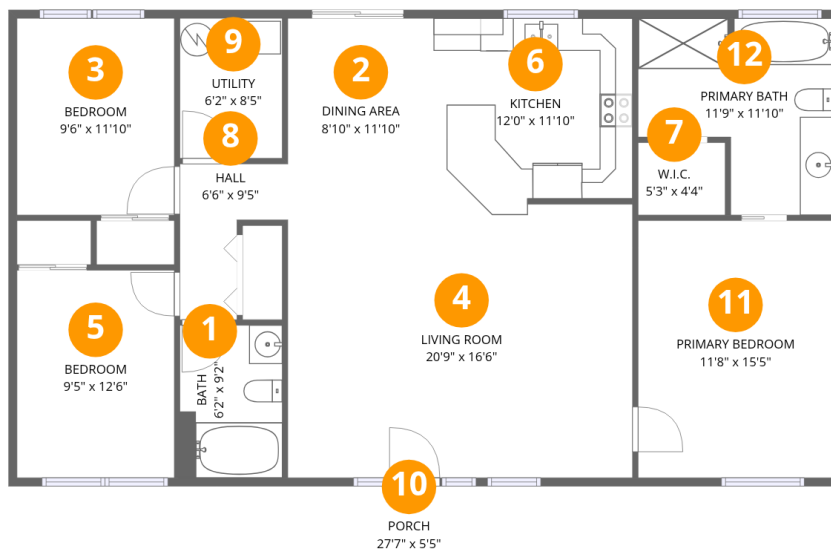
 **1** Floors

 **3** Bedrooms

 **2** Bathrooms

Home data report

7839 King William Avenue, Aylett, Virginia 23009, United States



Room dimensions

Floor 1

Total:1359sqft Excluded: 149sqft

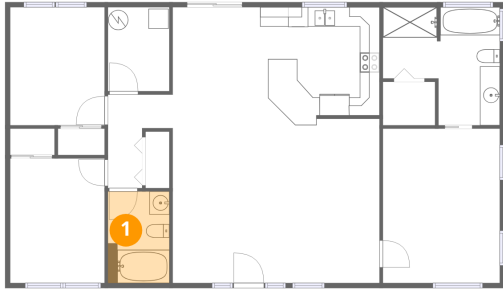
#		Dimensions	sqft	Counted as living area
1	Bath	6'2" x 9'2"	57 sq. ft	Yes
2	Dining Area	8'10" x 11'10"	104 sq. ft	Yes
3	Bedroom	9'6" x 11'10"	112 sq. ft	Yes
4	Living Room	20'9" x 16'6"	333 sq. ft	Yes
5	Bedroom	9'5" x 12'6"	118 sq. ft	Yes
6	Kitchen	12'0" x 11'10"	135 sq. ft	Yes
7	W.I.C.	5'3" x 4'4"	23 sq. ft	Yes
8	Hall	6'6" x 9'5"	43 sq. ft	Yes
9	Utility	6'2" x 8'5"	52 sq. ft	Yes
10	Porch	27'7" x 5'5"	149 sq. ft	No
11	Primary Bedroom	11'8" x 15'5"	182 sq. ft	Yes

Home data report

7839 King William Avenue, Aylett, Virginia 23009, United States

#		Dimensions	sqft	Counted as living area
12	Primary Bath	11'9" x 11'10"	112 sq. ft	Yes

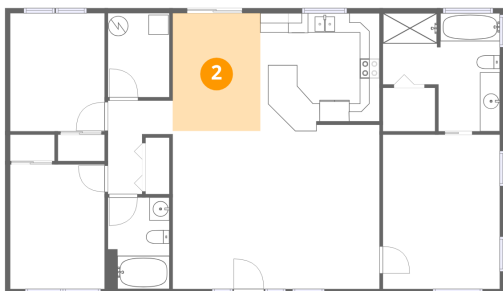
1 Floor 1 - Bath



Dimensions: 6'2" x 9'2"
Area: 57 sq. ft
Counted as living area: Yes

Heated: Yes
Finished: Yes
Enclosed: Yes
Contiguous: Yes
Permitted: Yes
Wet space: Yes
Addition: No
Conversion: No

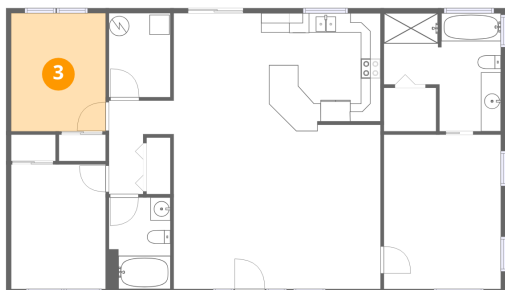
2 Floor 1 - Dining Area



Dimensions: 8'10" x 11'10"
Area: 104 sq. ft
Counted as living area: Yes

Heated: Yes
Finished: Yes
Enclosed: Yes
Contiguous: Yes
Permitted: Yes
Wet space: No
Addition: No
Conversion: No

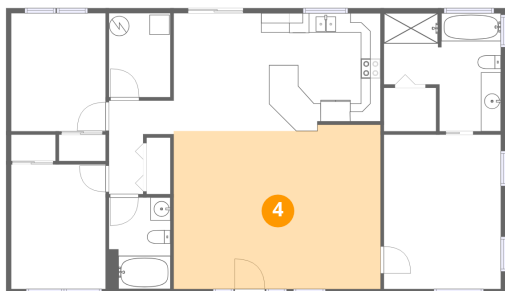
3 Floor 1 - Bedroom



Dimensions: 9'6" x 11'10"
Area: 112 sq. ft
Counted as living area: Yes

Heated: Yes
Finished: Yes
Enclosed: Yes
Contiguous: Yes
Permitted: Yes
Wet space: No
Addition: No
Conversion: No

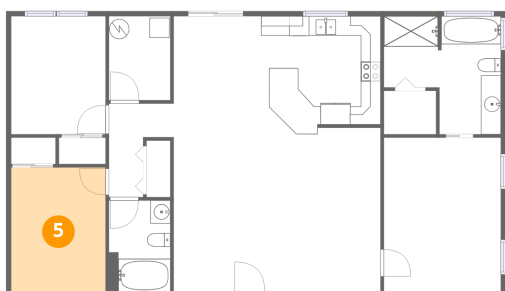
4 Floor 1 - Living Room



Dimensions: 20'9" x 16'6"
Area: 333 sq. ft
Counted as living area: Yes

Heated: Yes
Finished: Yes
Enclosed: Yes
Contiguous: Yes
Permitted: Yes
Wet space: No
Addition: No
Conversion: No

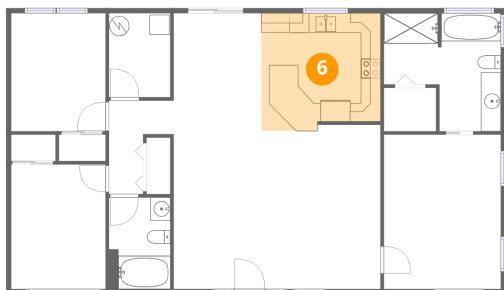
5 Floor 1 - Bedroom



Dimensions: 9'5" x 12'6"
Area: 118 sq. ft
Counted as living area: Yes

Heated: Yes
Finished: Yes
Enclosed: Yes
Contiguous: Yes
Permitted: Yes
Wet space: No
Addition: No
Conversion: No

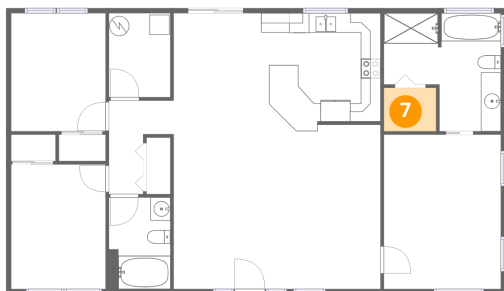
6 Floor 1 - Kitchen



Dimensions: 12'0" x 11'10"
Area: 135 sq. ft
Counted as living area: Yes

Heated: Yes
Finished: Yes
Enclosed: Yes
Contiguous: Yes
Permitted: Yes
Wet space: No
Addition: No
Conversion: No

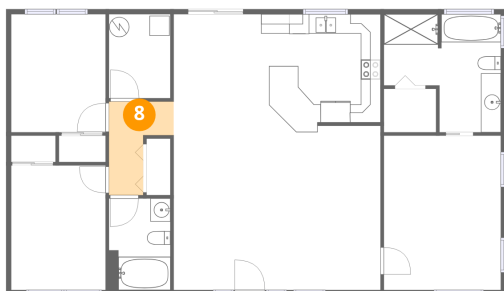
7 Floor 1 - W.I.C.



Dimensions: 5'3" x 4'4"
Area: 23 sq. ft
Counted as living area: Yes

Heated: Yes
Finished: Yes
Enclosed: Yes
Contiguous: Yes
Permitted: Yes
Wet space: No
Addition: No
Conversion: No

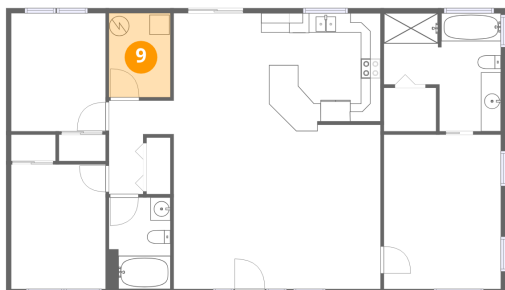
8 Floor 1 - Hall



Dimensions: 6'6" x 9'5"
Area: 43 sq. ft
Counted as living area: Yes

Heated: Yes
Finished: Yes
Enclosed: Yes
Contiguous: Yes
Permitted: Yes
Wet space: No
Addition: No
Conversion: No

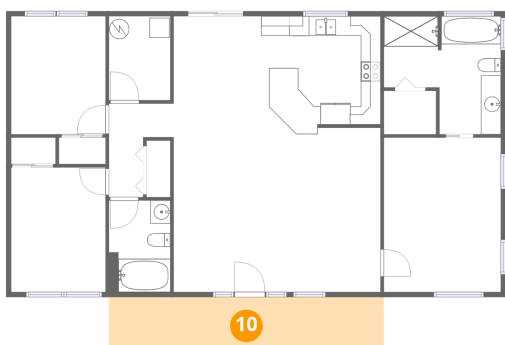
9 Floor 1 - Utility



Dimensions: 6'2" x 8'5"
Area: 52 sq. ft
Counted as living area: Yes

Heated: Yes
Finished: Yes
Enclosed: Yes
Contiguous: Yes
Permitted: Yes
Wet space: No
Addition: No
Conversion: No

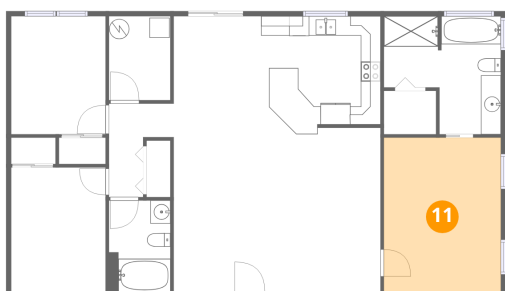
10 Floor 1 - Porch



Dimensions: 27'7" x 5'5"
Area: 149 sq. ft
Counted as living area: No

Heated: No
Finished: No
Enclosed: No
Contiguous: Yes
Permitted: Yes
Wet space: No
Addition: No
Conversion: No

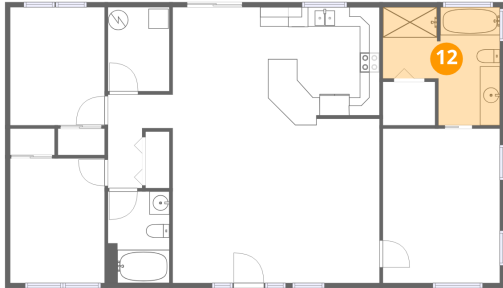
11 Floor 1 - Primary Bedroom



Dimensions: 11'8" x 15'5"
Area: 182 sq. ft
Counted as living area: Yes

Heated: Yes
Finished: Yes
Enclosed: Yes
Contiguous: Yes
Permitted: Yes
Wet space: No
Addition: No
Conversion: No

12 Floor 1 - Primary Bath



Dimensions: 11'9" x 11'10"
Area: 112 sq. ft
Counted as living area: Yes

Heated: Yes
Finished: Yes
Enclosed: Yes
Contiguous: Yes
Permitted: Yes
Wet space: Yes
Addition: No
Conversion: No