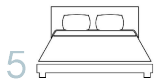




One South Stanley Road

South Orange, NJ



7,427 Sq. Ft.

www.onesouthstanleyroad.com



VICTORIA
CARTER
GROUP





Elegance and Charm

Set on nearly one-half acre in the prestigious Tuxedo Park section of South Orange, this 14-room Mediterranean center hall colonial offers five bedrooms, four bathrooms, an updated kitchen along with an updated au pair/in-law suite. The entry vestibule boasts marble steps into a spacious foyer complimented by a Tiffany style light fixture. A double French door, with tall sidelights, opens to the living room. Two deep and generous closets flank the foyer which opens into both the formal dining room and large living room with beautiful glass-paneled French doors.

Newer Pella windows allow all of the rooms to be flooded with light. A decorative brick mantle serves as the focal point of the spacious, front-to-back living room. Large windows provide abundant natural light throughout the day. A coffered ceiling and recessed lighting complete the room.

The family room is connected to the living room with glass-paneled French doors. Crown moulding and a ceiling fan add to the room. Front windows and windows facing the back yard provide excellent light. There is also a door that leads to the au pair/in-law suite. Hardwood flooring with ribbon inlay enhance all of these rooms.





Bright and Spacious

Designed for gracious entertaining, the formal dining room boasts hardwood flooring with ribbon inlay, paneled wainscoting, a decorative fireplace with tile hearth and brick surround and an elegant coffered ceiling.

The updated kitchen features a spacious dining area and picture windows. The eat-in kitchen is connected to the service kitchen/pantry. Both kitchens feature raised



panel wood cabinets. The service kitchen/pantry contains a dishwasher, stainless steel undermounted sink, built-in microwave oven and five-burner gas range with a convection oven and broiler! The updated eat-in kitchen contains a new electric range with convection oven, new stainless steel undermounted sink, Quartzite counter tops all around and a newer refrigerator. The red oak flooring is beautiful and durable.

The eat-in kitchen dining area overlooks the fully fenced back yard and offers a sliding door to the rear patio and yard. The service kitchen/pantry connects to the mud room that leads to the driveway and out to the garage.



The Au Pair/In-Law Suite

Ideally suited for use as in-law or au pair suite located just off the family room on the first level is a suite composed of a modern tiled bathroom, an updated kitchen with granite counter tops, a bedroom and living room. This suite of rooms may be accessed through the family room or from an outside entrance located in the fenced back yard. Be sure to note the marble flooring in the kitchen and bathroom!



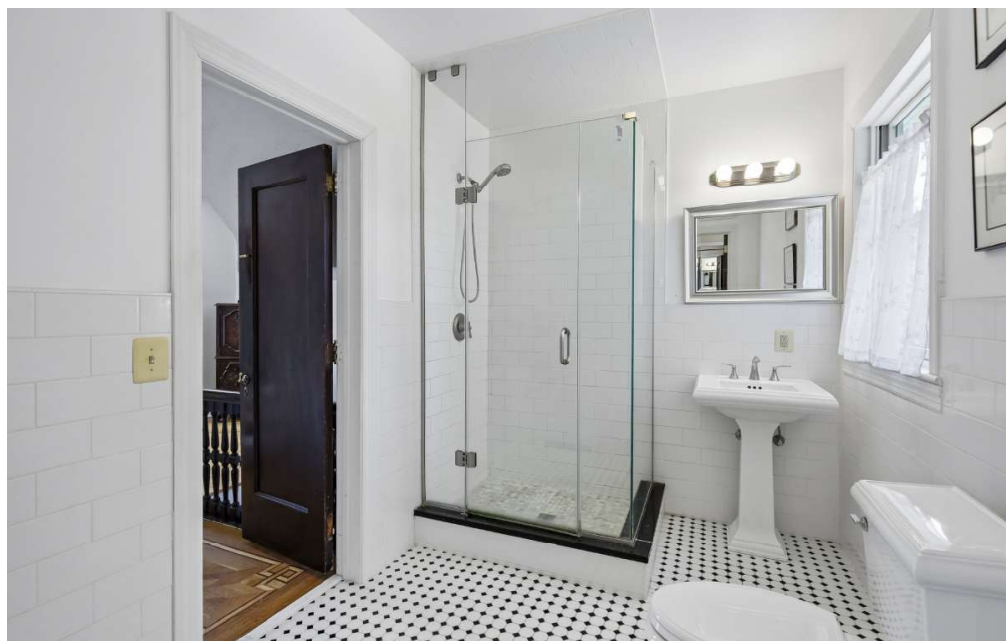


Individual Escapes

The second level of the home offers a spacious primary bedroom with a mirrored double closet and a second smaller closet provide ample storage. There is a door into the updated bathroom with a fully tiled glass-enclosed shower and a pedestal sink beside a large window facing into the back yard. There is a second door from the bathroom that opens into the second floor foyer.

Each of the two additional bedrooms on the second floor includes hardwood flooring with ribbon inlay, large closets, ceiling fans and windows facing into the front yard or the side yard or the back yard.

A large foyer on the second floor offers a built-in linen closet, a large window facing the front yard and a stairway to the third floor.



The Light, Bright and Airy



The Third Level

Upon reaching the loft-like third floor, one will find a bedroom, an office/playroom and an updated, tiled bathroom complete with a fully-tiled tub-shower, newer pedestal sink, bright lighting and two windows facing the back yard.

The third floor bedroom offers a deep closet for storage and a lovely window that adds to the ceiling-mounted overhead light fixture.

The third floor office/playroom opens to the third floor loft area where there is a full closet to hang clothing and store personal items. The area containing the full house attic may be retrofitted with a window to complete this room and overlook the side yard on South Stanley Road.

Beneath the neutral carpeting on the third floor lies solid hardwood flooring that may be refinished depending on one's taste.





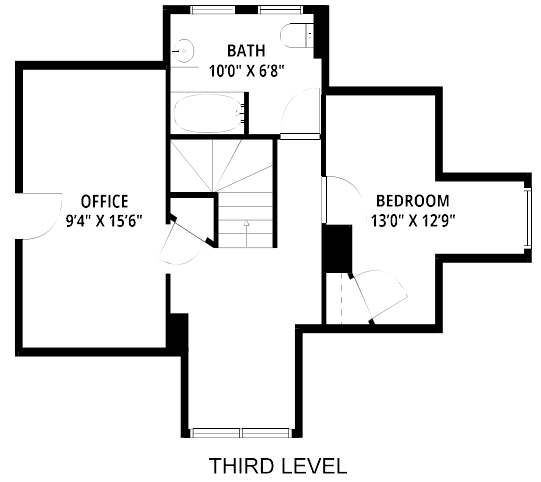
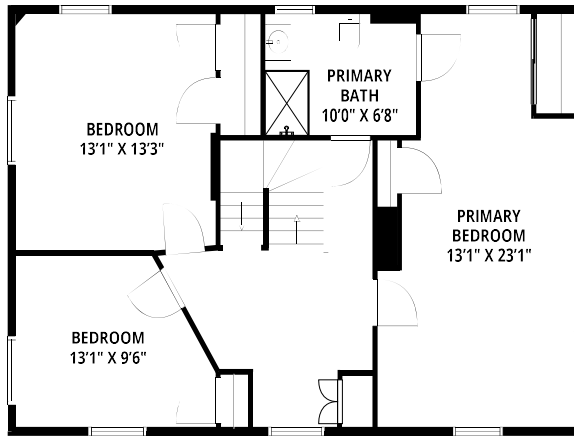
The Lower (Basement) Level

The lower level exercise room has wood grain flooring and two windows that face the side yard. There is also a closet in the exercise room and an overhead light fixture.

The lower level also offers a full bathroom with a completely tiled shower stall, a newer pedestal sink and a tiled floor. The window facing the side yard adds light. There is an overhead light fixture.

The lower level also has a spacious laundry area, a work area and the mechanical systems: the central air-conditioning, a newer gas-fired hot water system, a hot water tank, updated 200 amp electrical panel, underground sprinkler control panel and, of course, a French drain and sump pump. The lower level has three windows and an exit with Bilco door that leads to the patio and back yard.

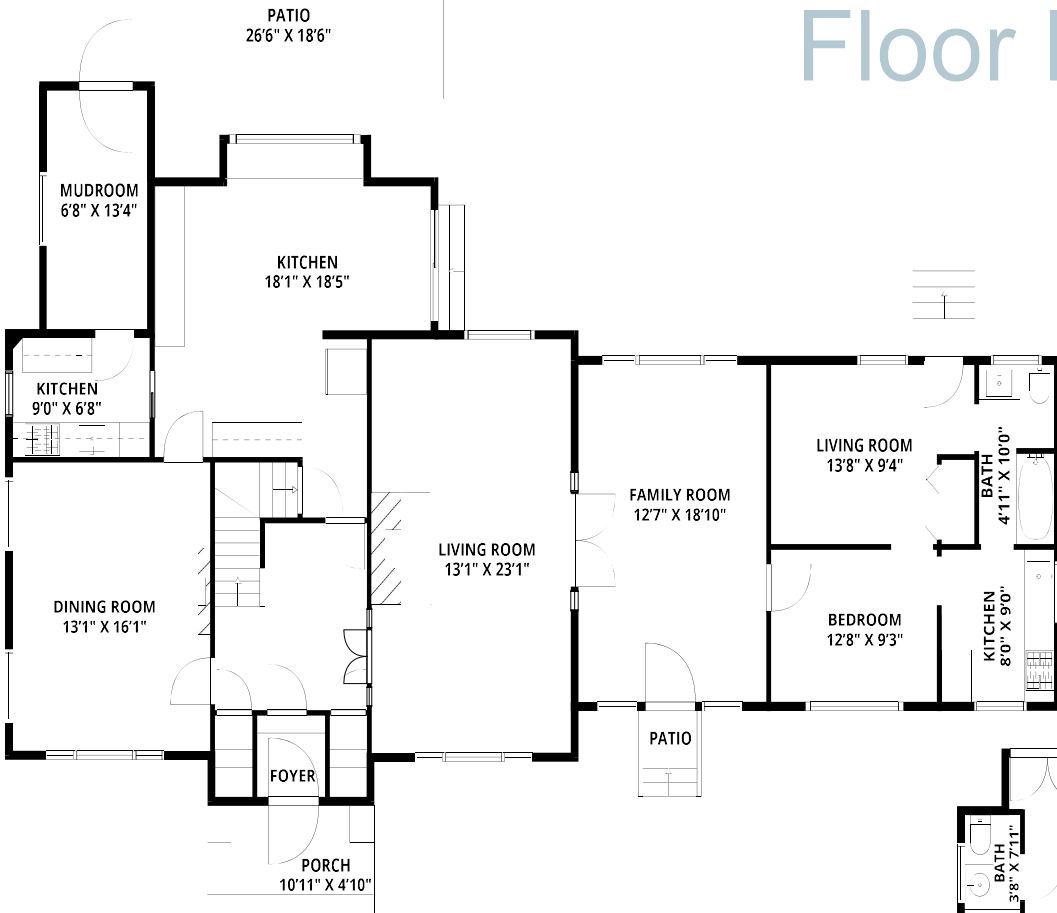




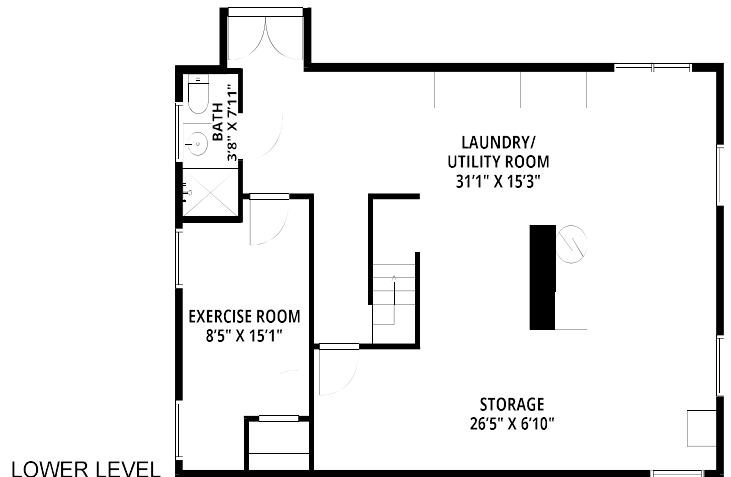
SECOND LEVEL

THIRD LEVEL

Floor Plan



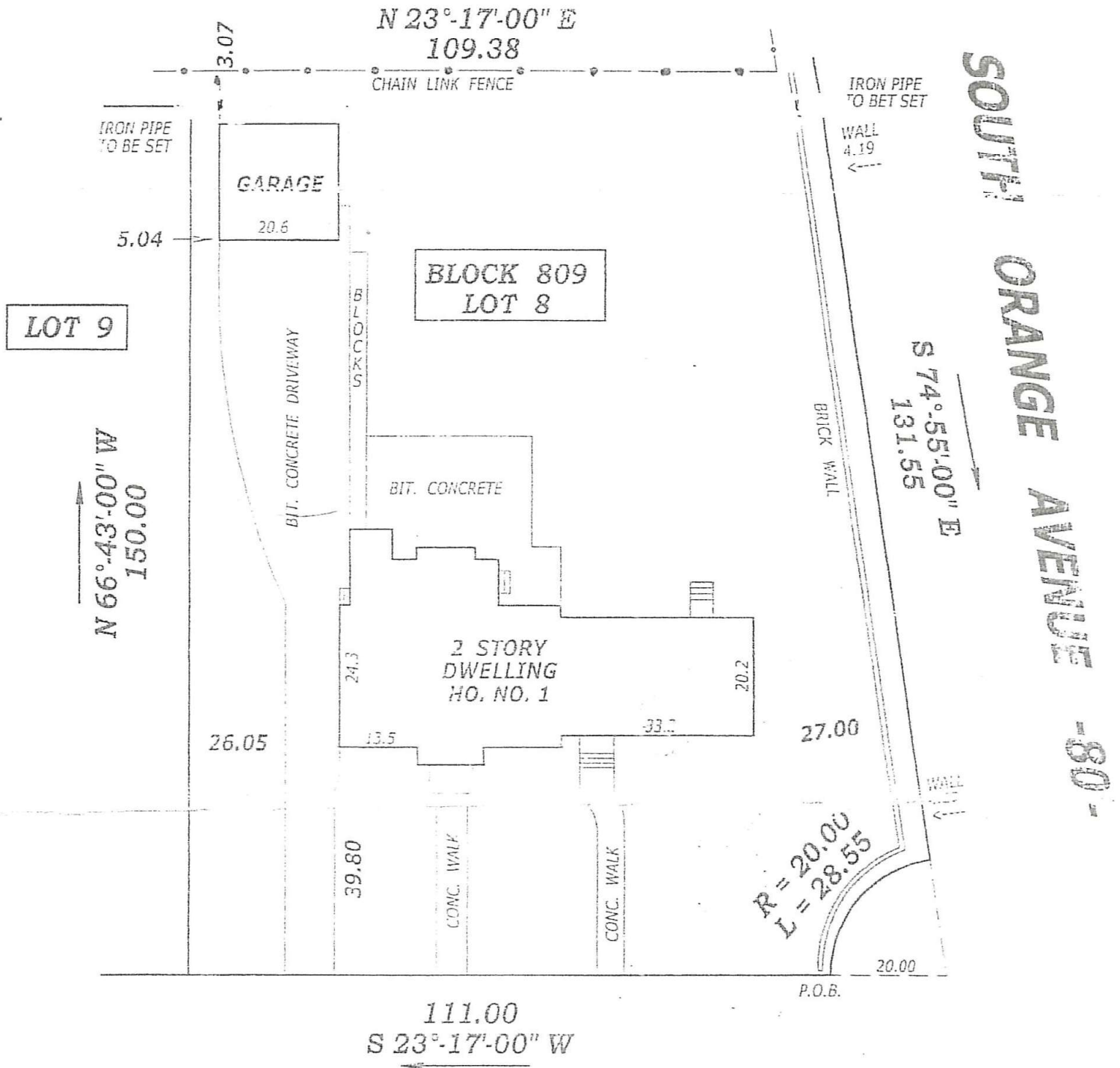
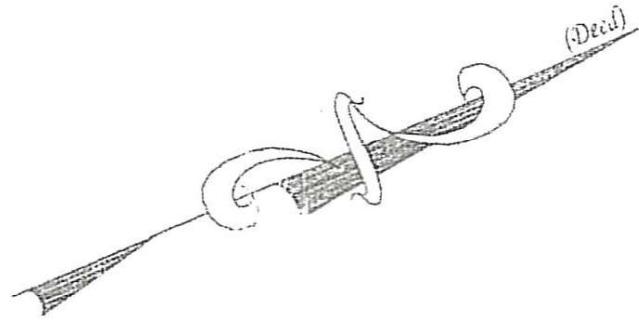
FIRST LEVEL



LOWER LEVEL

NOT TO SCALE: Floor plans are for illustration purposes only.
 Room positions and dimensions are approximate and should be independently measured for accuracy.

Property Survey



1 STANLEY ROAD SOUTH -70-

Highlights

GENERAL

- Warm and inviting, 14-room, Mediterranean, center-hall Colonial in a thriving and diverse residential community
- Five bedrooms including a primary suite
- Four updated full baths
- Eat-in kitchen
- 3,300 +/- heated living space
- Central air-conditioning (first level only)
- Updated, four-room au pair/in-law suite: direct interior access to the home and exterior egress
- Newer Pella windows throughout
- Neutral palette throughout
- Detached one-car garage
- Rear patio
- 0.41 acre property (approximately 28,000 square feet): approved for construction of a swimming pool per South Orange zoning regulations
- Fully fenced back yard
- Minutes from town, schools, restaurants, shopping and Midtown Direct commuter train service into Manhattan

FIRST LEVEL

- Entry vestibule: tile floor; marble steps to foyer
- Formal entry foyer: hardwood floor with ribbon inlay; two deep closets; crown moulding; Tiffany style chandelier; double French door, with sidelights, to living room; French door to dining room; door to kitchen; hardwood stairs to second level
- Living room (front-to-back); hardwood floor with ribbon inlay; decorative fireplace with tile hearth and brick surround; coffered ceiling; recessed lighting; double-hung window, two casement windows, front; double-hung window, rear; double French door to family room; double French door, with sidelights, to center foyer
- Family room (front-to-back): hardwood floor with ribbon inlay; crown moulding; lighted ceiling fan; two double-hung windows, front; three double-hung windows, rear; door to au pair/in-law suite; double French door to living room; egress to front walkway
- Dining room: hardwood floor with ribbon inlay; paneled wainscoting; decorative fireplace with tile hearth and brick surround; built-in china cabinet; coffered ceiling; chandelier; double-hung window, two casement windows, front; two double-hung windows, side; doorway to kitchen; French door to center foyer
- Updated eat-in kitchen: red oak hardwood floor; raised panel cabinets; Quartzite counter tops and backsplash; new electric range with

convection oven; newer refrigerator; undermounted stainless steel sink; two pendant light fixtures; overhead light fixture; picture window, two casement windows, rear; doorways to service kitchen/pantry and dining room; sliding door to rear patio;

- Service kitchen/pantry: red oak hardwood floor; raised panel cabinets; Quartzite counter tops; tile backsplash; stainless steel appliances –(five-burner gas range with convection oven and broiler; built-in microwave oven; dishwasher; refrigerator) undemounted stainless steel sink; lighted ceiling fan; double-hung window, side; doorways to mud room and eat-in kitchen
- Mud room: tile floor; overhead light fixture; door to prep kitchen; side egress to driveway

AU PAIR/IN-LAW SUITE

- Living room: hardwood floor; double closet; overhead light fixture; double-hung window, rear; doorways to bedroom and bath; egress to back yard
- Kitchen: marble tile floor; raised panel cabinets; granite counter tops; stainless steel appliances – five-burner gas range, built-in microwave, refrigerator; undermounted stainless steel sink; overhead light fixture; double-hung window, front; double-hung window, side; doorways to bedroom and bath
- Bedroom five: hardwood floor; lighted ceiling fan; double-hung window, two casement windows, front; doorways to kitchen and living room
- Updated full bath: marble tile floor; shower-over-tub with tile surround; pedestal sink; light bar; double-hung window, rear; doorways to kitchen and living room

SECOND LEVEL

- Primary bedroom (front-to-back): hardwood floor; wall shelf; double closet with mirrored door; additional closet; lighted ceiling fan; double-hung window, front; two double-hung windows, side; double-hung window, rear; direct access to full bath
- Bedroom two: hardwood floor; closet; lighted ceiling fan; double-hung window, front; double-hung window, side
- Bedroom three: hardwood floor; closet; lighted ceiling fan; double-hung window, side; double-hung window, rear
- Updated full bath: tile floor; subway tile half-wall; glass-enclosed shower with tile surround; pedestal sink; wall mirror; light bar; double-hung window, rear
- Center foyer; hardwood floor;

built-in linen storage; Tiffany style chandelier; double-hung window, front

THIRD LEVEL

- Bedroom four; neutral wall-to-wall carpet; closet; overhead light fixture; double-hung window, side
- Office: neutral wall-to-wall carpet; closet; overhead light fixture; double-hung window, side; access to attic storage
- Updated full bath: tile floor and half-wall; shower-over-tub with tile surround; pedestal sink; wall mirror; light bar; two double-hung windows, rear
- Foyer: neutral wall-to-wall carpet; linen closet; overhead light fixture; double-hung window, front

LOWER LEVEL

- Exercise room: wood grain tile floor; overhead light fixture; two casement windows, side
- Updated full bath: tile floor; walk-in shower with tile surround; newer pedestal sink; overhead light fixture; casement window, side
- Laundry/utility room: washer and dryer; overhead light fixture; Bilco door to back yard; casement window, front; casement window, side; two casement windows, rear
- Storage/work area: overhead light fixture; casement window, side

EXTERIOR

- Stucco front elevation; vinyl siding
- Paver front walkways
- Rear patio: access to kitchen
- In-ground sprinkler system
- Bilco door to lower level
- Oversized two-car detached garage
- Asphalt driveway: extensive off-street parking
- Fully fenced and level back yard
- Professionally landscaped: established lawns; mature shade trees; decorative shrubbery

IMPROVEMENTS

- Installed new central air-conditioning throughout first level – 2025
- Updated kitchen: installed new Quartzite counter tops and appliances – 2025
- Installed new solid red oak wood flooring in eat-in kitchen – 2025
- Installed in-ground sprinkler system with timers – 2024
- Painted home exterior and repaired cracked stucco – 2023
- Installed new ArmorTech paver patio and walkways – 2021
- Installed new 1.5-inch gas line: can accommodate a swimming pool heater, greenhouse heater or gas-fired generator
- Installed new copper gutters and downspouts – 2020
- Installed 40 new Pella double-hung thermopane wood-clad

windows throughout (excepting attic) – 2020

- Installed new flat roofs with commercial grade TPO rubber membrane, on the side and rear of the house (guaranteed for 20 years) – 2020
- Installed French drain and sump pump in lower level – 2019
- Installed new gas-fired hot water boiler and new flue, vent and chimney liner – 2019
- Partially replaced cement floor on lower level – 2019
- Completely rebuilt garage roof with Spanish clay tile and copper gutters – 2019
- Installed two new garage roll-up doors and exterior entrance door – 2019
- Installed new Ludowici Spanish clay tile roof with Weathershield underlay (guaranteed for 100 years) – 2018
- Installed new copper gutters – 2018
- Installed new gas water heater and associated copper plumbing – 2015
- Installed new sinks, tubs, commodes and copper plumbing in all four baths – 2014-2020
- Completely fenced back yard – 2014
- Installed new 220 amp electrical box, new outlets, new wiring and second panel in primary bedroom to accommodate second level central air-conditioning – 2014
- Installed new exterior lighting with motion detectors – 2014-2024

2025 ASSESSMENTS/TAXES

- Land: \$293,000
- Improvements: \$530,700
- Total: \$823,700
- 2025 taxes: \$21,284

AN IDEAL LOCATION

- This home is located within easy walking distance of Seton Hall University and just minutes away from the South Orange train station and Meadowland Park with tennis courts, three swimming pools, handball and basketball courts, baseball fields, a community center and bike paths. In the summer, the park hosts weekly live concerts and family movie nights. Home to the South Orange Performing Arts Center, South Orange is a thriving and diverse community – with a vibrant business center including custom boutiques, distinctive specialty shops, fine galleries and gourmet restaurants – and all just 20 minutes from Newark's Liberty International Airport and close to major highways including the Garden State Parkway, the NJ Turnpike and Interstate Route 280.



Victoria Carter
Broker/Sales Associate

Cell: 973-220-3050

Email: Victoria@victoriacarter.com

www.victoriacarter.com

Weichert, Realtors • Short Hills Office



Weichert