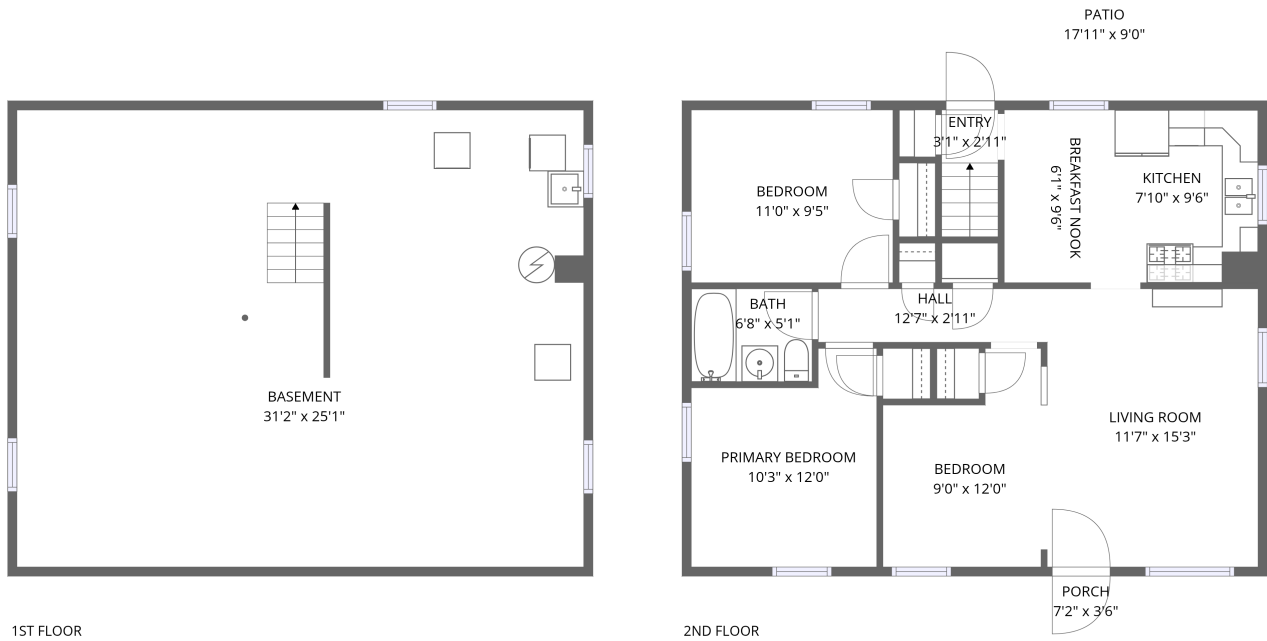


Home data report

42 Wilmington Avenue, Tonawanda, New York, United States



Total Area: 785 sq. ft

Basement: 0 sq. ft, 1st Floor: 785 sq. ft

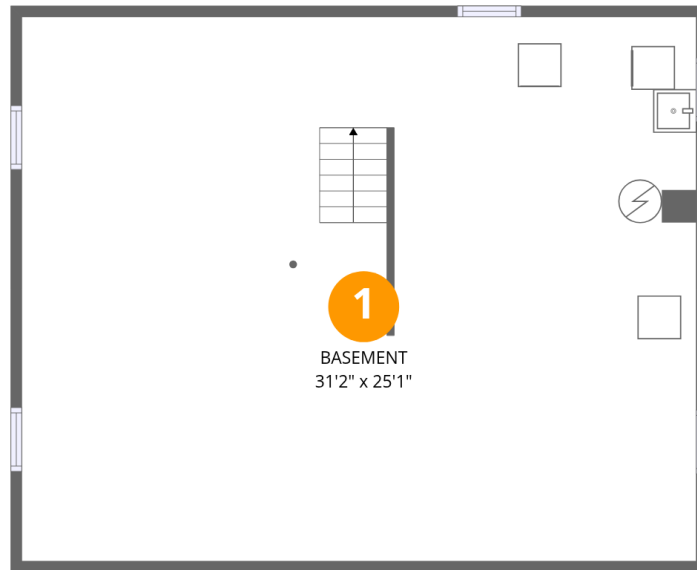
Excluded: Basement 785 sq. ft, Porch 25 sq. ft, Patio 161 sq. ft, Walls: 114 sq. ft

Property summary

 **2** Floors

 **3** Bedrooms

 **1** Bathrooms



Room dimensions

Floor 1 Below grade

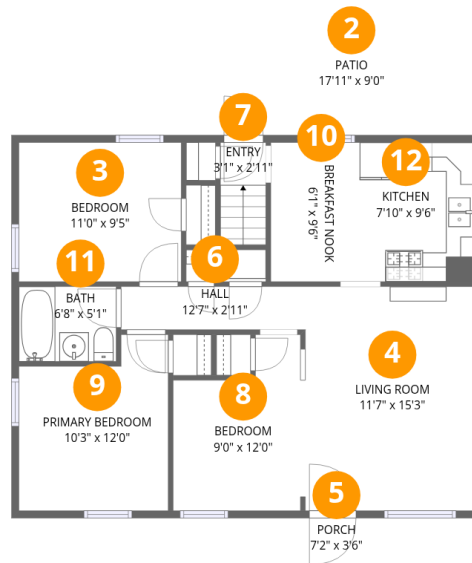
Total: 0sqft

Excluded: 785sqft

#		Dimensions	sqft	Counted as living area
1	Basement	31'2" x 25'1"	785 sq. ft	No

Home data report

42 Wilmington Avenue, Tonawanda, New York, United States



Room dimensions

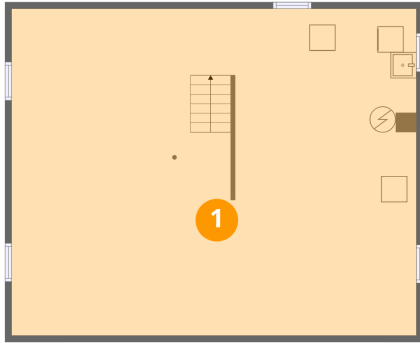
Floor 2

Total: 785sqft

Excluded: 186sqft

#		Dimensions	sqft	Counted as living area
2	Patio	17'11" x 9'0"	161 sq. ft	No
3	Bedroom	11'0" x 9'5"	106 sq. ft	Yes
4	Living Room	11'7" x 15'3"	178 sq. ft	Yes
5	Porch	7'2" x 3'6"	25 sq. ft	No
6	Hall	12'7" x 2'11"	37 sq. ft	Yes
7	Entry	3'1" x 2'11"	22 sq. ft	Yes
8	Bedroom	9'0" x 12'0"	91 sq. ft	Yes
9	Primary Bedroom	10'3" x 12'0"	108 sq. ft	Yes
10	Breakfast Nook	6'1" x 9'6"	58 sq. ft	Yes
11	Bath	6'8" x 5'1"	34 sq. ft	Yes
12	Kitchen	7'10" x 9'6"	75 sq. ft	Yes

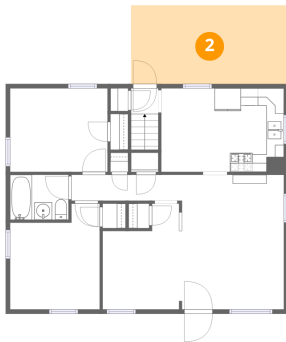
1 Floor 1 - Basement



Dimensions: 31'2" x 25'1"
Area: 785 sq. ft
Counted as living area: No

Heated: Yes
Finished: No
Enclosed: Yes
Contiguous: Yes
Permitted: Yes
Wet space: No
Addition: No
Conversion: No

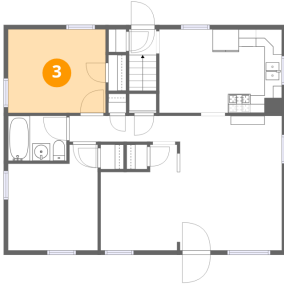
2 Floor 2 - Patio



Dimensions: 17'11" x 9'0"
Area: 161 sq. ft
Counted as living area: No

Heated: No
Finished: No
Enclosed: No
Contiguous: Yes
Permitted: Yes
Wet space: No
Addition: No
Conversion: No

3 Floor 2 - Bedroom



Dimensions: 11'0" x 9'5"
Area: 106 sq. ft
Counted as living area: Yes

Heated: Yes
Finished: Yes
Enclosed: Yes
Contiguous: Yes
Permitted: Yes
Wet space: No
Addition: No
Conversion: No

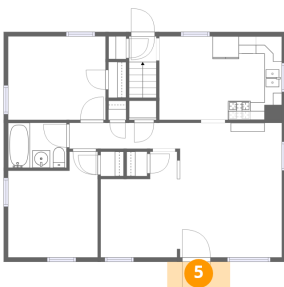
4 Floor 2 - Living Room



Dimensions: 11'7" x 15'3"
Area: 178 sq. ft
Counted as living area: Yes

Heated: Yes
Finished: Yes
Enclosed: Yes
Contiguous: Yes
Permitted: Yes
Wet space: No
Addition: No
Conversion: No

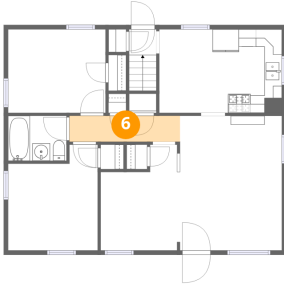
5 Floor 2 - Porch



Dimensions: 7'2" x 3'6"
Area: 25 sq. ft
Counted as living area: No

Heated: No
Finished: No
Enclosed: No
Contiguous: Yes
Permitted: Yes
Wet space: No
Addition: No
Conversion: No

6 Floor 2 - Hall



Dimensions: 12'7" x 2'11"
Area: 37 sq. ft
Counted as living area: Yes

Heated: Yes
Finished: Yes
Enclosed: Yes
Contiguous: Yes
Permitted: Yes
Wet space: No
Addition: No
Conversion: No

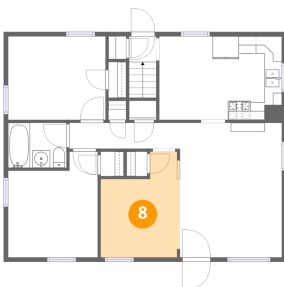
7 Floor 2 - Entry



Dimensions: 3'1" x 2'11"
Area: 22 sq. ft
Counted as living area: Yes

Heated: Yes
Finished: Yes
Enclosed: Yes
Contiguous: Yes
Permitted: Yes
Wet space: No
Addition: No
Conversion: No

8 Floor 2 - Bedroom



Dimensions: 9'0" x 12'0"
Area: 91 sq. ft
Counted as living area: Yes

Heated: Yes
Finished: Yes
Enclosed: Yes
Contiguous: Yes
Permitted: Yes
Wet space: No
Addition: No
Conversion: No

9 Floor 2 - Primary Bedroom



Dimensions: 10'3" x 12'0"
Area: 108 sq. ft
Counted as living area: Yes

Heated: Yes
Finished: Yes
Enclosed: Yes
Contiguous: Yes
Permitted: Yes
Wet space: No
Addition: No
Conversion: No

10 Floor 2 - Breakfast Nook



Dimensions: 6'1" x 9'6"
Area: 58 sq. ft
Counted as living area: Yes

Heated: Yes
Finished: Yes
Enclosed: Yes
Contiguous: Yes
Permitted: Yes
Wet space: No
Addition: No
Conversion: No

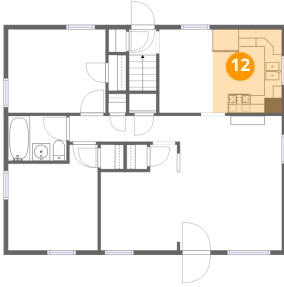
11 Floor 2 - Bath



Dimensions: 6'8" x 5'1"
Area: 34 sq. ft
Counted as living area: Yes

Heated: Yes
Finished: Yes
Enclosed: Yes
Contiguous: Yes
Permitted: Yes
Wet space: Yes
Addition: No
Conversion: No

12 Floor 2 - Kitchen



Dimensions: 7'10" x 9'6"
Area: 75 sq. ft
Counted as living area: Yes

Heated: Yes
Finished: Yes
Enclosed: Yes
Contiguous: Yes
Permitted: Yes
Wet space: No
Addition: No
Conversion: No