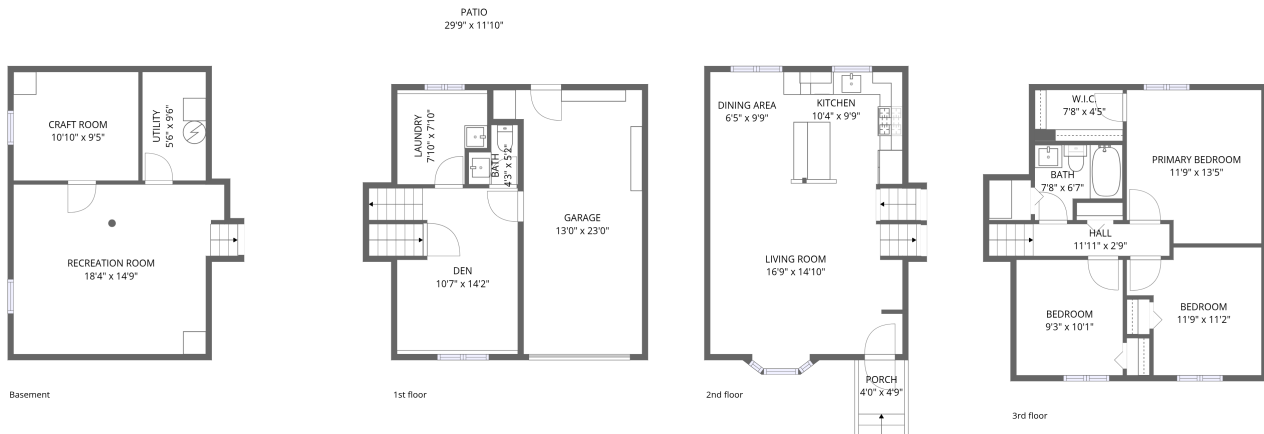


## Home data report

266 Peppertree Drive, Amherst, Erie County, New York, United States, 14228



**Total Area: 1315 sq. ft**

Basement: 110 sq. ft, 1st Floor: 249 sq. ft, 2nd Floor: 422 sq. ft, 3rd Floor: 534 sq. ft

Excluded: Recreation room 264 sq. ft, Utility 52 sq. ft, Garage 245 sq. ft, Patio 321 sq. ft, Porch 19 sq. ft, Embedded window 6 sq. ft, Walls: 198 sq. ft

## Property summary

 **4** Floors

 **3** Bedrooms

 **1** Bathrooms

Home data report

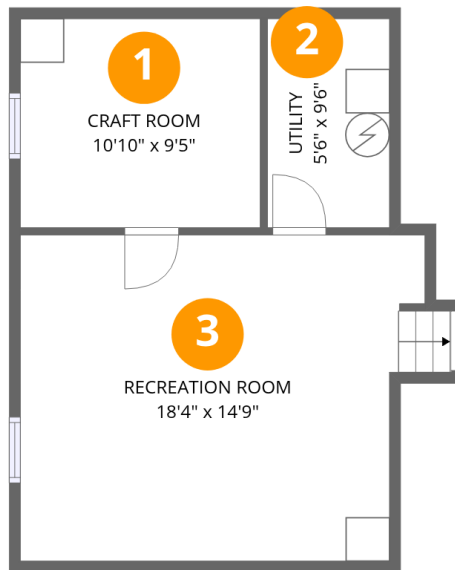
**266 Peppertree Drive, Amherst, Erie County, New York, United States, 14228**

 **1**  
Half baths

 **1**  
Garages

Home data report

266 Peppertree Drive, Amherst, Erie County, New York, United States, 14228



## Room dimensions

Floor 1 Below grade

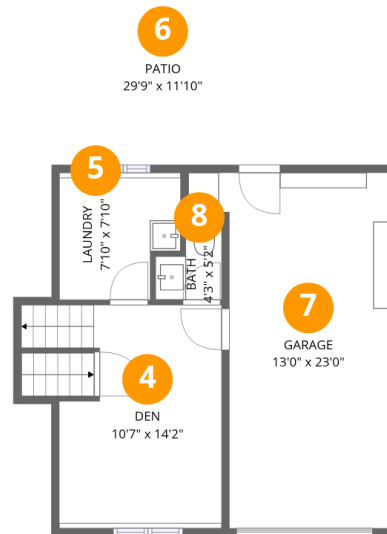
Total:110sqft

Excluded: 316sqft

#		Dimensions	sqft	Counted as living area
1	Craft Room	10'10" x 9'5"	103 sq. ft	Yes
2	Utility	5'6" x 9'6"	52 sq. ft	No
3	Recreation Room	18'4" x 14'9"	261 sq. ft	No

## Home data report

266 Peppertree Drive, Amherst, Erie County, New York, United States, 14228



## Room dimensions

Floor 2

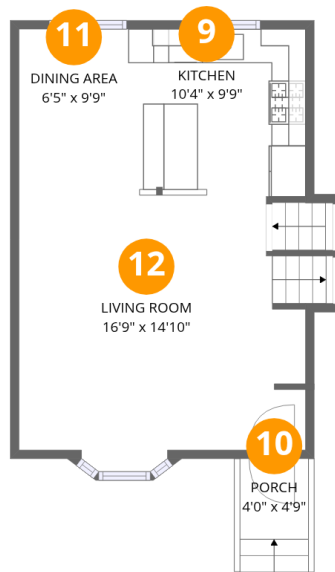
Total:249sqft

Excluded: 566sqft

#		Dimensions	sqft	Counted as living area
4	Den	10'7" x 14'2"	150 sq. ft	Yes
5	Laundry	7'10" x 7'10"	58 sq. ft	Yes
6	Patio	29'9" x 11'10"	321 sq. ft	No
7	Garage	13'0" x 23'0"	245 sq. ft	No
8	Bath	4'3" x 5'2"	18 sq. ft	Yes

Home data report

266 Peppertree Drive, Amherst, Erie County, New York, United States, 14228



### Room dimensions

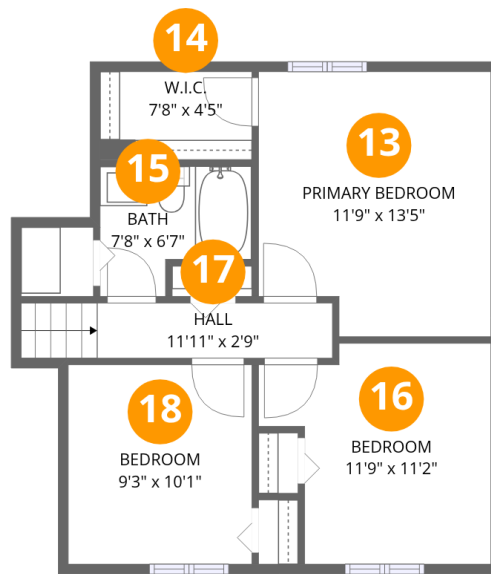
Floor 3

Total:422sqft Excluded: 25sqft

#		Dimensions	sqft	Counted as living area
9	Kitchen	10'4" x 9'9"	101 sq. ft	Yes
10	Porch	4'0" x 4'9"	19 sq. ft	No
11	Dining Area	6'5" x 9'9"	63 sq. ft	Yes
12	Living Room	16'9" x 14'10"	243 sq. ft	Yes

Home data report

266 Peppertree Drive, Amherst, Erie County, New York, United States, 14228



### Room dimensions

Floor 4

Total:534sqft Excluded: 0sqft

#		Dimensions	sqft	Counted as living area
13	Primary Bedroom	11'9" x 13'5"	149 sq. ft	Yes
14	W.I.C.	7'8" x 4'5"	34 sq. ft	Yes
15	Bath	7'8" x 6'7"	42 sq. ft	Yes
16	Bedroom	11'9" x 11'2"	110 sq. ft	Yes
17	Hall	11'11" x 2'9"	44 sq. ft	Yes
18	Bedroom	9'3" x 10'1"	93 sq. ft	Yes

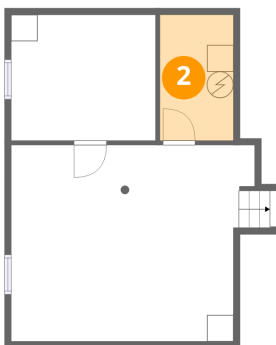
## 1 Floor 1 - Craft Room



Dimensions: 10'10" x 9'5"  
Area: 103 sq. ft  
Counted as living area: Yes

Heated: Yes  
Finished: Yes  
Enclosed: Yes  
Contiguous: Yes  
Permitted: Yes  
Wet space: No  
Addition: No  
Conversion: No

## 2 Floor 1 - Utility



Dimensions: 5'6" x 9'6"  
Area: 52 sq. ft  
Counted as living area: No

Heated: Yes  
Finished: No  
Enclosed: Yes  
Contiguous: Yes  
Permitted: Yes  
Wet space: No  
Addition: No  
Conversion: No

### 3 Floor 1 - Recreation Room



Dimensions: 18'4" x 14'9"  
Area: 261 sq. ft  
Counted as living area: No

Heated: Yes  
Finished: No  
Enclosed: Yes  
Contiguous: Yes  
Permitted: Yes  
Wet space: No  
Addition: No  
Conversion: No

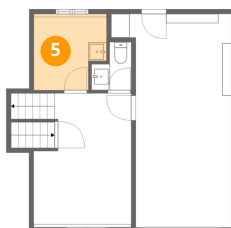
### 4 Floor 2 - Den



Dimensions: 10'7" x 14'2"  
Area: 150 sq. ft  
Counted as living area: Yes

Heated: Yes  
Finished: Yes  
Enclosed: Yes  
Contiguous: Yes  
Permitted: Yes  
Wet space: No  
Addition: No  
Conversion: No

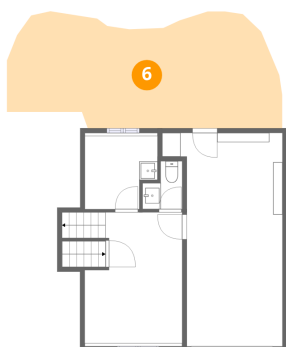
### 5 Floor 2 - Laundry



Dimensions: 7'10" x 7'10"  
Area: 58 sq. ft  
Counted as living area: Yes

Heated: Yes  
Finished: Yes  
Enclosed: Yes  
Contiguous: Yes  
Permitted: Yes  
Wet space: No  
Addition: No  
Conversion: No

## 6 Floor 2 - Patio



Dimensions: 29'9" x 11'10"

Area: 321 sq. ft

Counted as living area: No

Heated: No

Finished: No

Enclosed: No

Contiguous: Yes

Permitted: Yes

Wet space: No

Addition: No

Conversion: No

## 7 Floor 2 - Garage



Dimensions: 13'0" x 23'0"

Area: 245 sq. ft

Counted as living area: No

Heated: No

Finished: No

Enclosed: Yes

Contiguous: Yes

Permitted: Yes

Wet space: No

Addition: No

Conversion: No

## 8 Floor 2 - Bath



Dimensions: 4'3" x 5'2"

Area: 18 sq. ft

Counted as living area: Yes

Heated: Yes

Finished: Yes

Enclosed: Yes

Contiguous: Yes

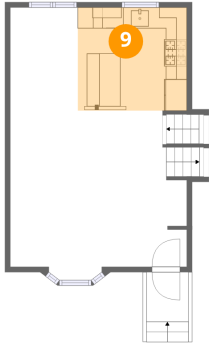
Permitted: Yes

Wet space: Yes

Addition: No

Conversion: No

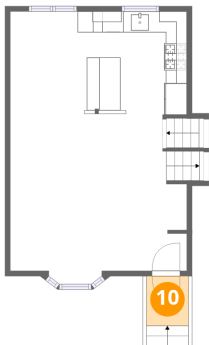
**9** Floor 3 - Kitchen



Dimensions: 10'4" x 9'9"  
Area: 101 sq. ft  
Counted as living area: Yes

Heated: Yes  
Finished: Yes  
Enclosed: Yes  
Contiguous: Yes  
Permitted: Yes  
Wet space: No  
Addition: No  
Conversion: No

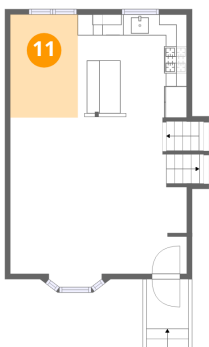
**10** Floor 3 - Porch



Dimensions: 4'0" x 4'9"  
Area: 19 sq. ft  
Counted as living area: No

Heated: No  
Finished: No  
Enclosed: No  
Contiguous: Yes  
Permitted: Yes  
Wet space: No  
Addition: No  
Conversion: No

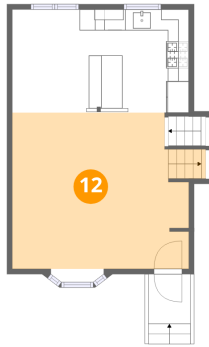
**11** Floor 3 - Dining Area



Dimensions: 6'5" x 9'9"  
Area: 63 sq. ft  
Counted as living area: Yes

Heated: Yes  
Finished: Yes  
Enclosed: Yes  
Contiguous: Yes  
Permitted: Yes  
Wet space: No  
Addition: No  
Conversion: No

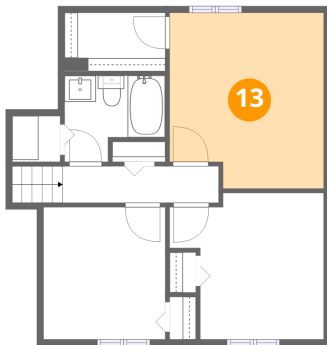
### 12 Floor 3 - Living Room



Dimensions: 16'9" x 14'10"  
Area: 243 sq. ft  
Counted as living area: Yes

Heated: Yes  
Finished: Yes  
Enclosed: Yes  
Contiguous: Yes  
Permitted: Yes  
Wet space: No  
Addition: No  
Conversion: No

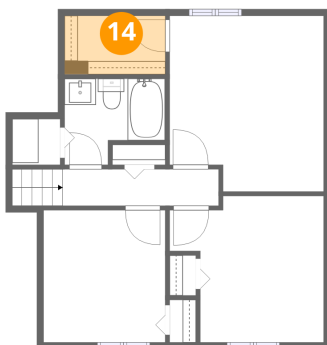
### 13 Floor 4 - Primary Bedroom



Dimensions: 11'9" x 13'5"  
Area: 149 sq. ft  
Counted as living area: Yes

Heated: Yes  
Finished: Yes  
Enclosed: Yes  
Contiguous: Yes  
Permitted: Yes  
Wet space: No  
Addition: No  
Conversion: No

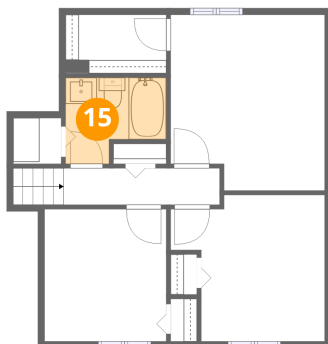
### 14 Floor 4 - W.I.C.



Dimensions: 7'8" x 4'5"  
Area: 34 sq. ft  
Counted as living area: Yes

Heated: Yes  
Finished: Yes  
Enclosed: Yes  
Contiguous: Yes  
Permitted: Yes  
Wet space: No  
Addition: No  
Conversion: No

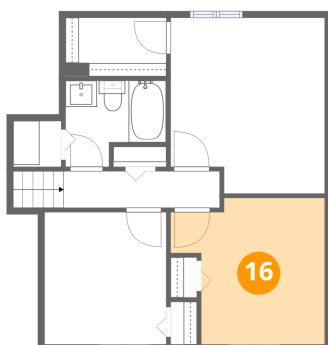
**15** Floor 4 - Bath



Dimensions: 7'8" x 6'7"  
Area: 42 sq. ft  
Counted as living area: Yes

Heated: Yes  
Finished: Yes  
Enclosed: Yes  
Contiguous: Yes  
Permitted: Yes  
Wet space: Yes  
Addition: No  
Conversion: No

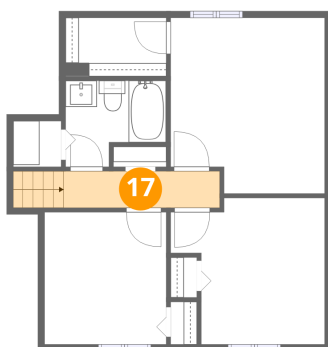
**16** Floor 4 - Bedroom



Dimensions: 11'9" x 11'2"  
Area: 110 sq. ft  
Counted as living area: Yes

Heated: Yes  
Finished: Yes  
Enclosed: Yes  
Contiguous: Yes  
Permitted: Yes  
Wet space: No  
Addition: No  
Conversion: No

**17** Floor 4 - Hall

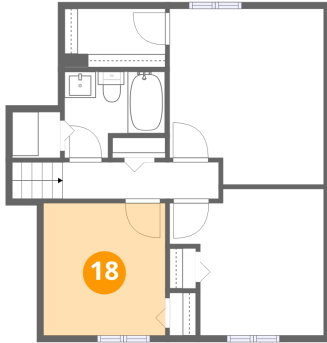


Dimensions: 11'11" x 2'9"  
Area: 44 sq. ft  
Counted as living area: Yes

Heated: Yes  
Finished: Yes  
Enclosed: Yes  
Contiguous: Yes  
Permitted: Yes  
Wet space: No  
Addition: No  
Conversion: No

266 Peppertree Drive, Amherst, Erie County, New York, United States, 14228

**18** Floor 4 - Bedroom



Dimensions: 9'3" x 10'1"  
Area: 93 sq. ft  
Counted as living area: Yes

Heated: Yes  
Finished: Yes  
Enclosed: Yes  
Contiguous: Yes  
Permitted: Yes  
Wet space: No  
Addition: No  
Conversion: No