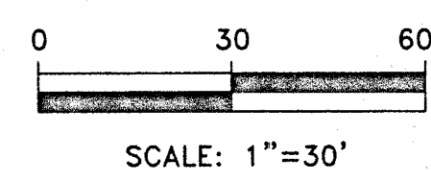
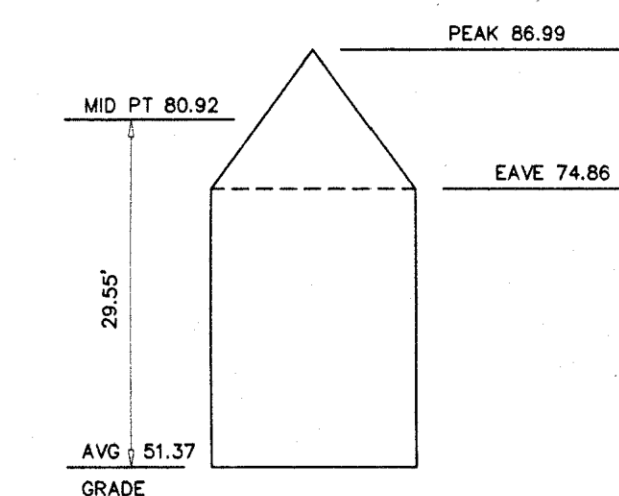


REFERENCES:

- 1) A CERTAIN MAP ENTITLED "FINAL SUBDIVISION PLAT, LAUREN POND ESTATES, BOROUGH OF DEMAREST, BERGEN COUNTY, NEW JERSEY" FILED IN THE BCCO AS MAP No. 9121
- 2) BOROUGH OF DEMAREST TAX MAPS.



#00-179

8 Lauren Pond
TAX LOT 2.01 IN BLOCK 97.03

FINAL AS BUILT
BOROUGH OF DEMAREST
BERGEN COUNTY, NEW JERSEY

HUBSCHMAN ENGINEERING
PLANNERS AND SURVEYORS
ENGLEWOOD CLIFFS
NJ 07632 (201) 568-5510

PLER, P.L.S.
LAND SURVEYOR
37206

REV. DWN. 01 JOB No.
CHK'D. RJM SCALE: 1"=30' 567-201

THE INFORMATION SHOWN HEREON CORRECTLY REPRESENTS THE CONDITION FOUND AT, AND AS OF DATE OF THE FIELD SURVEY, EXCEPT SUCH IMPROVEMENTS OR EASEMENTS, IF ANY, BELOW THE SURFACE AND NOT VISIBLE.
WAIVER OR SETTING CORNER MARKERS OBTAIN FROM ULTIMATE USER PURSUANT TO THE BOARD OF PROFESSIONAL ENGINEERS AND LAND SURVEYORS REGULATION, N.J.A.C. 13:45-5.1(f).
SUBSURFACE AND ENVIRONMENTAL CONDITIONS WERE NOT EXAMINED OR CONSIDERED AS A PART OF THIS SURVEY. NO STATEMENT IS MADE CONCERNING THE EXISTENCE OF UNDERGROUND OR OVERHEAD FACILITIES, WETLANDS OR ENVIRONMENTAL RESTRICTIONS OTHER THAN THAT WHICH IS SHOWN.