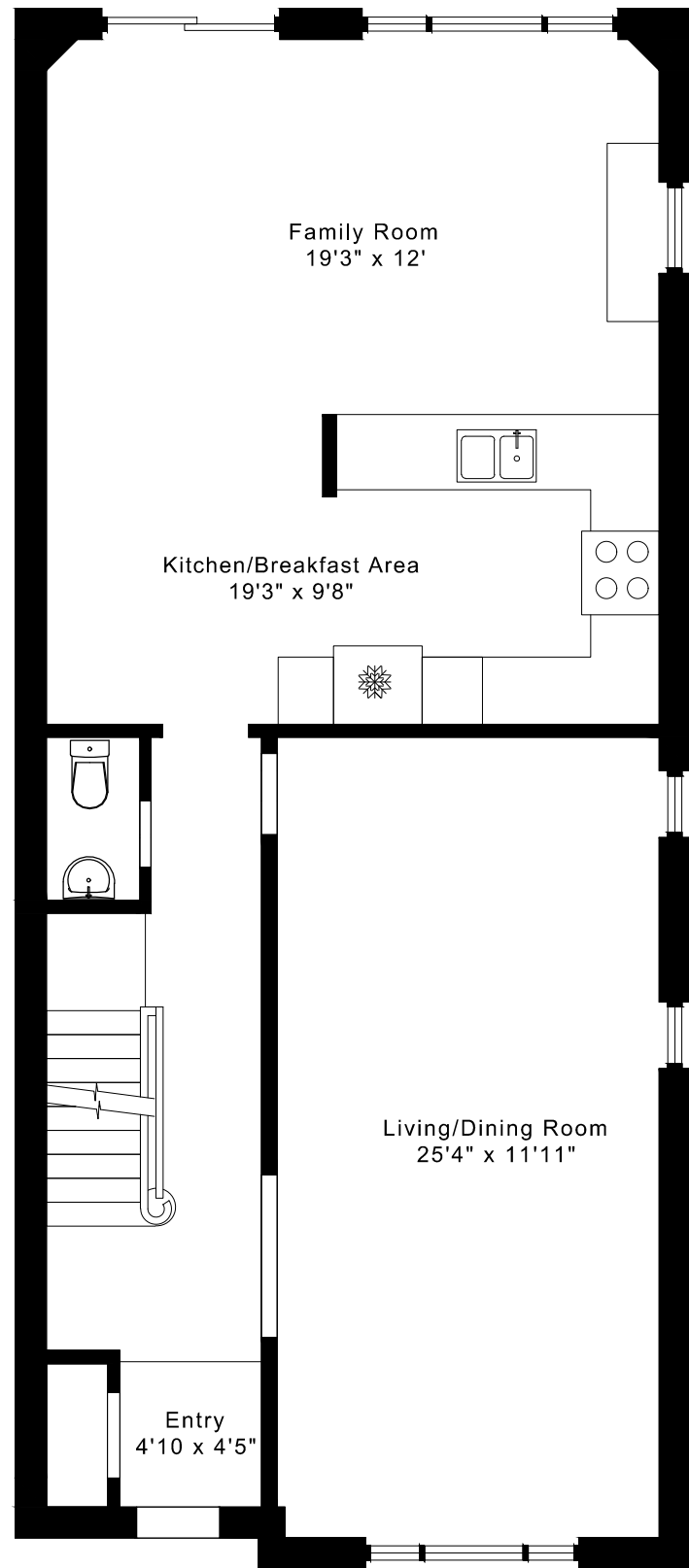
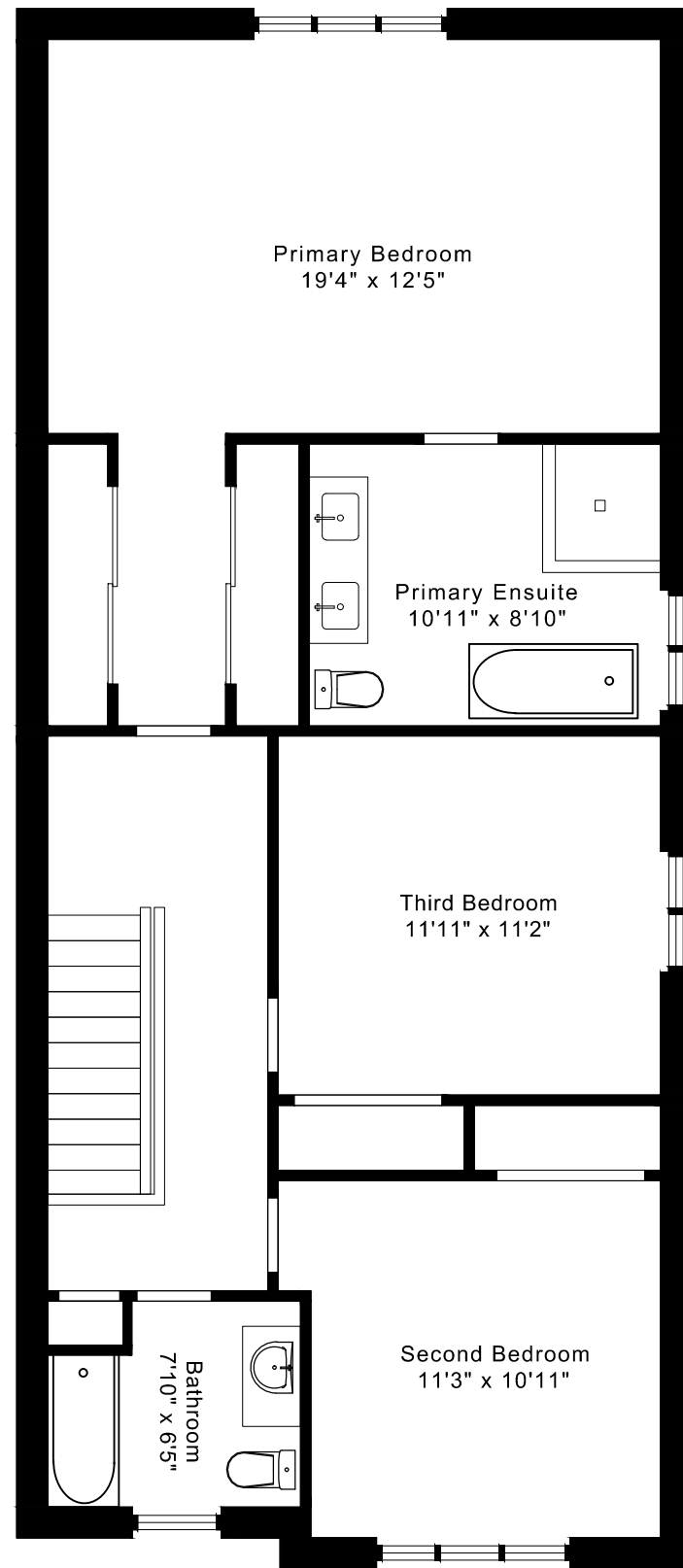


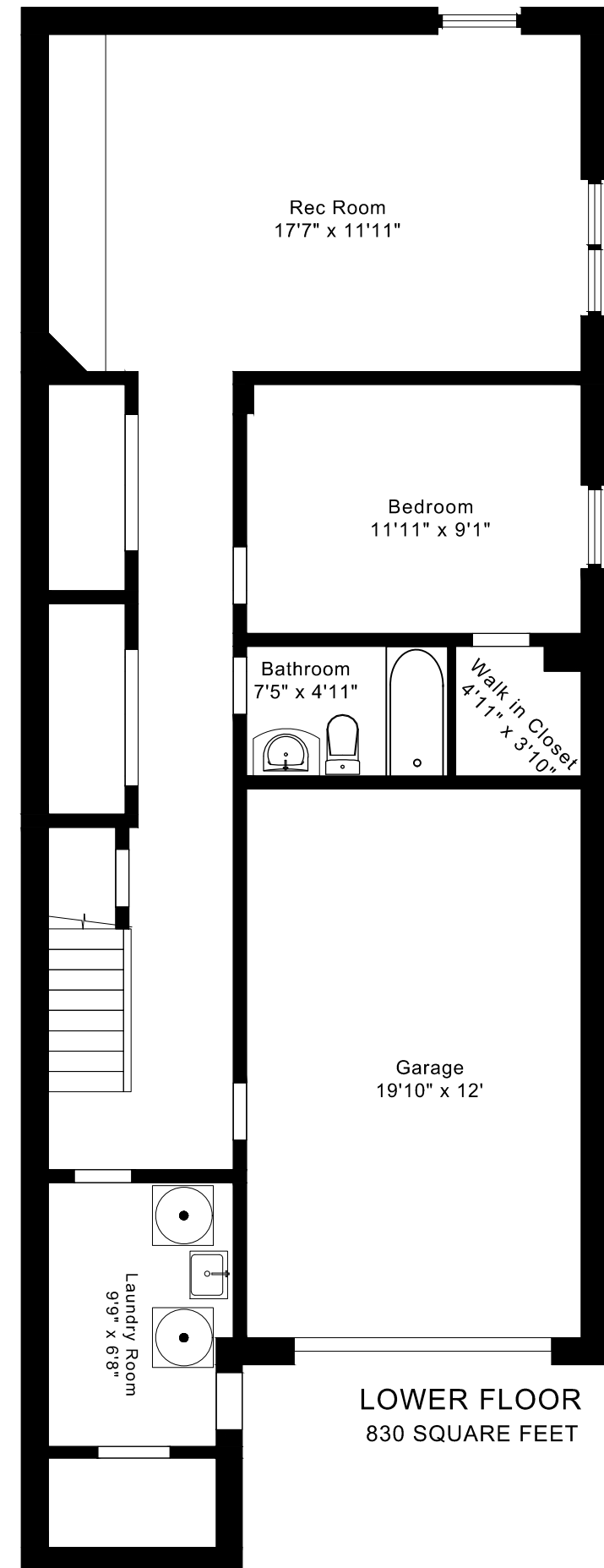
267 WINDERMERE AVENUE FLOOR PLANS



MAIN FLOOR
1045 SQUARE FEET



SECOND FLOOR
1045 SQUARE FEET

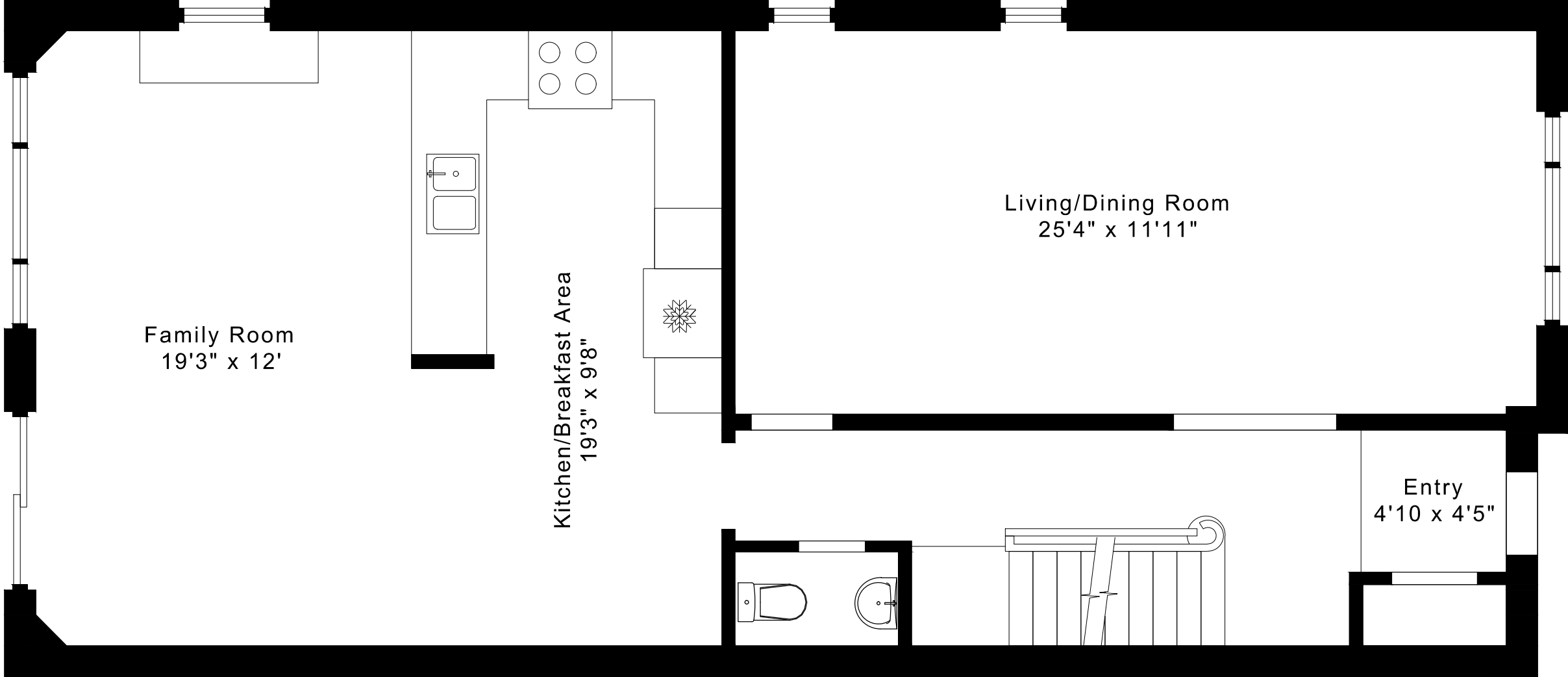


LOWER FLOOR
830 SQUARE FEET

2090 sq ft + 830 sq ft
BELOW GRADE

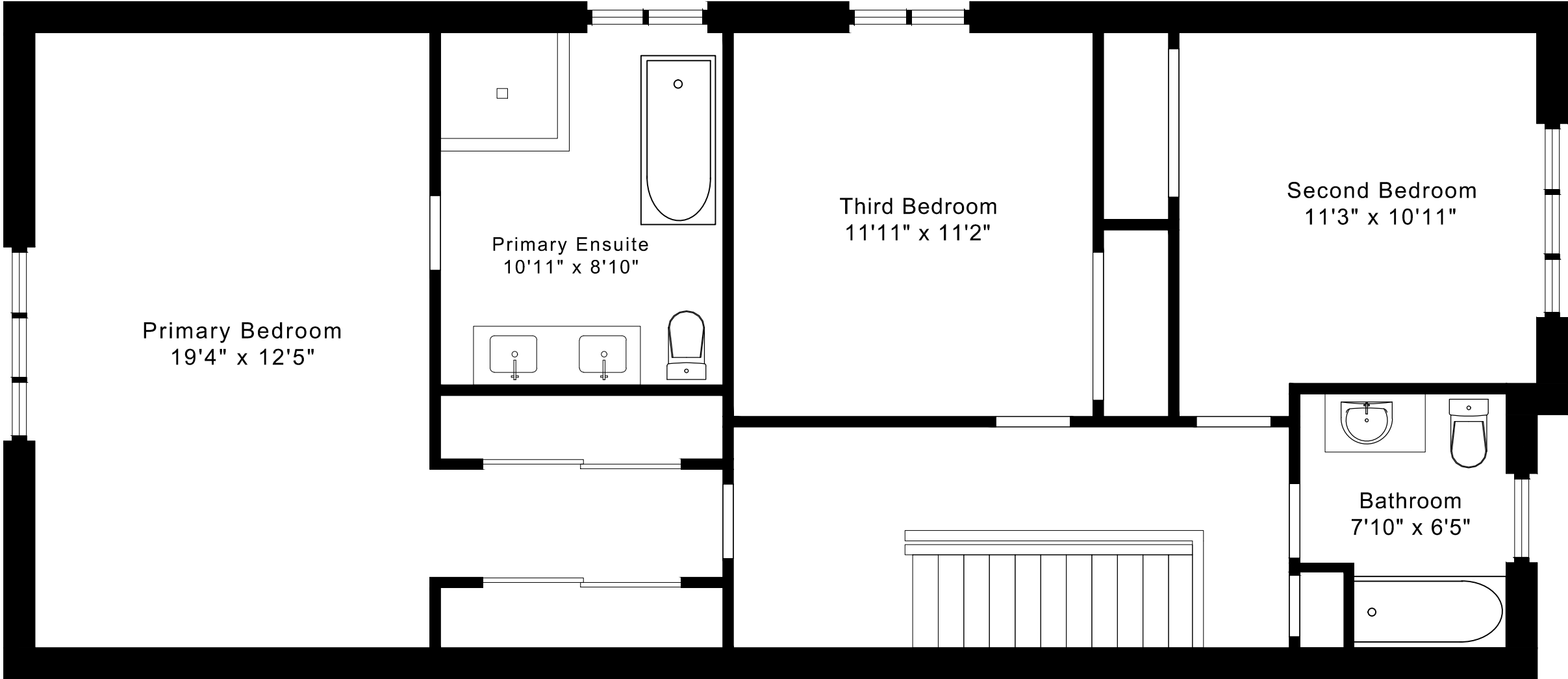
267 WINDERMERE AVENUE FLOOR PLANS

MAIN FLOOR 1045 SQUARE FEET



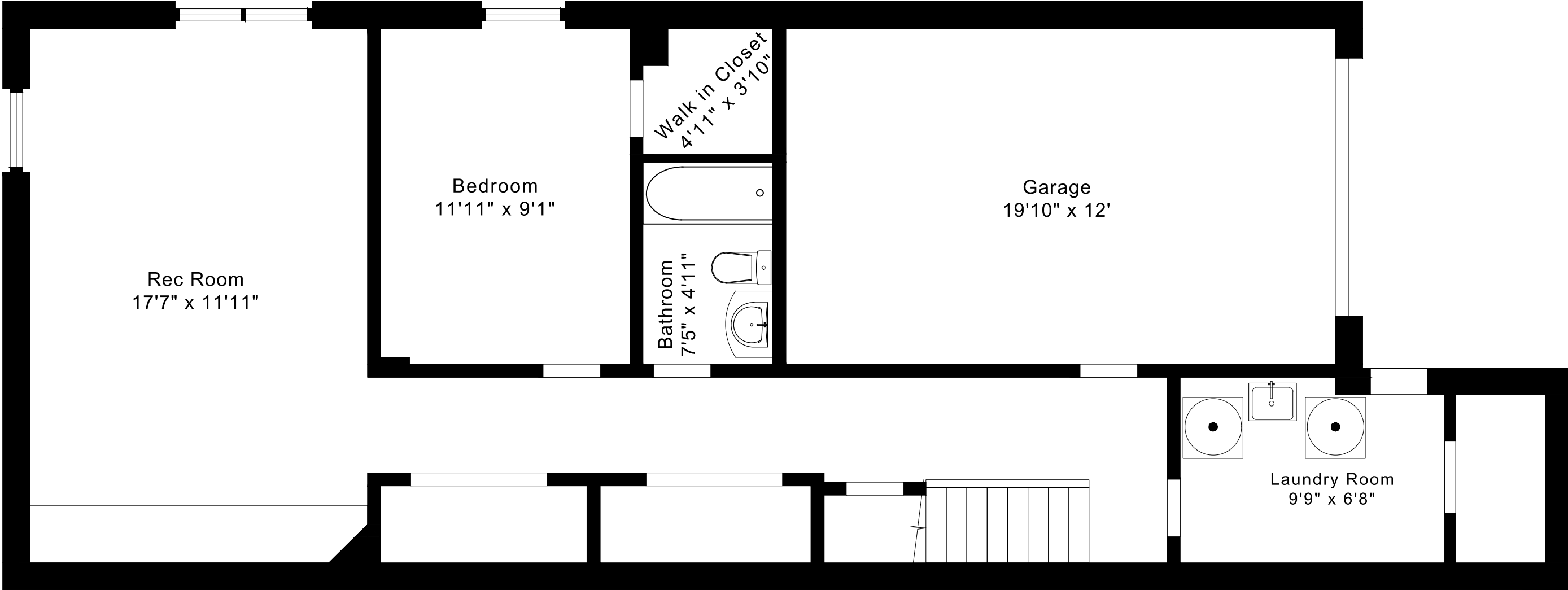
267 WINDERMERE AVENUE FLOOR PLANS

SECOND FLOOR 1045 SQUARE FEET



267 WINDERMERE AVENUE FLOOR PLANS

LOWER FLOOR 830 SQUARE FEET



267 WINDERMERE AVENUE ROOM MEASUREMENTS

Floor	Room	Imperial						Metric [m]		
		Length		Width		Height		Length	Width	Height
		Feet	Inches	Feet	Inches	Feet	Inches			
Second	Primary Bedroom	19	4	12	5	8	1	5,89	3,78	2,46
	Primary Ensuite	10	11	8	10	8	1	3,33	2,69	2,46
	Second Bedroom	11	3	10	11	8	1	3,43	3,33	2,46
	Third Bedroom	11	11	11	2	8	1	3,63	3,40	2,46
	Bathroom	7	10	6	5	8	1	2,39	1,96	2,46
Main	Entry	4	10	4	5	8	6	1,47	1,35	2,59
	Living/Dining Room	25	4	11	11	8	6	7,72	3,63	2,59
	Family Room	19	3	12	0	8	6	5,87	3,66	2,59
	Kitchen/Breakfast Area	19	3	9	8	8	6	5,87	2,95	2,59
Lower	Rec Room	17	7	11	11	7	9	5,36	3,63	2,36
	Bedroom	11	11	9	1	7	9	3,63	2,77	2,36
	Bathroom	7	5	4	11	7	2	2,26	1,50	2,18
	Walk in Closet	4	11	3	10	7	2	1,50	1,17	2,18
	Laundry Room	9	9	6	8	7	2	2,97	2,03	2,18
	Garage	19	10	12	0	7	7	6,05	3,66	2,31

The following is a disclaimer regarding the approximate nature of dimensions and floor areas listed in this document:

Disclaimer:

The dimensions and floor areas listed in this document are provided as an estimate only and are intended to be used for illustration purposes only. These measurements are not necessarily meant to be a perfect representation of the actual space.

Notes regarding measurement methods and accuracy:

The utilization of laser measurement technology during the 3D model capturing process at the location provides an accurate representation of floor plans, with a typical margin of error of 3-5%. For the most accurate and official measurement data, it is advised to consult official documents such as MPAC records, builder's pre-construction plans, or data from certified measurement companies.

Exterior wall thickness is included in the calculation of the overall square footage and is considered as a component of the footprint. The wall thickness measurement is obtained onsite whenever possible, or estimated in the event where obtaining onsite measurements is not possible, such as in the case of condominium buildings where wall thickness may vary throughout the building.