



242 Clarken Drive

West Orange, NJ

www.242clarkendrive.com



2

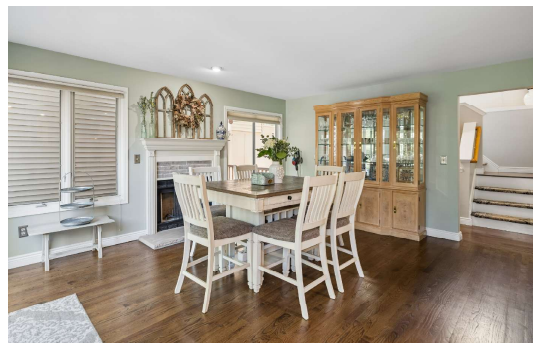


2.1

1,867 Sq. Ft.



VICTORIA
CARTER
GROUP





An Open Flow

A warm entry foyer, with tile floor, coat closet and overhead light fixture, welcomes you to this lovely home. Hardwood stairs run to the first level where a hallway access the living room, family room and powder room.

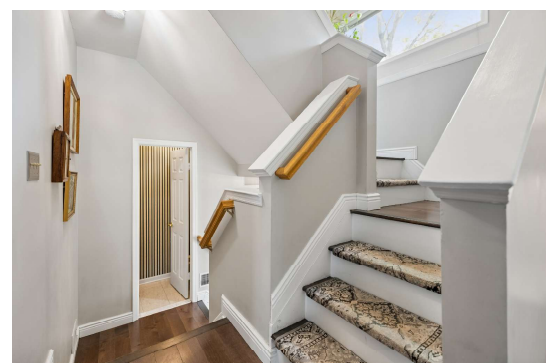
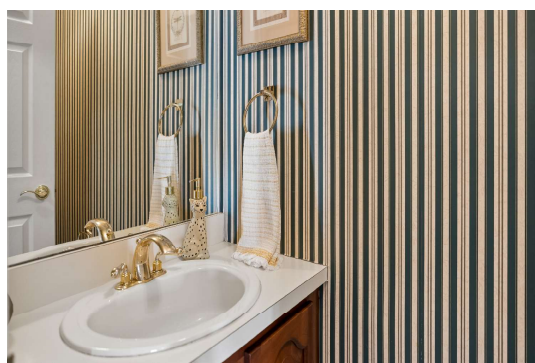
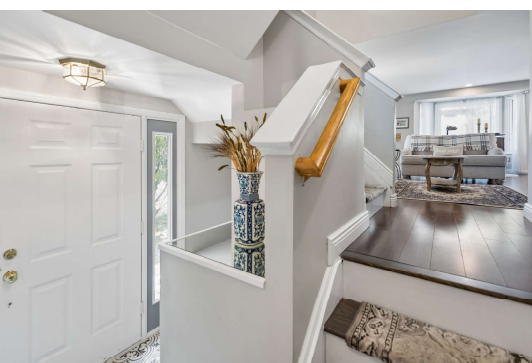
The spacious living room features a hardwood floor and recessed



lighting. Three casement windows, combine with a broad bay window in to flood the room with warm ambient light.

Open to the living room for a front-to-back flow that brightens and expands both areas, the dining room includes a hardwood floor, chair rail and chandelier. An open doorway accesses the kitchen, while a French door, with broad sidelight, opens to the rear deck that spans the entire width of the home.

The powder room is equipped with a tile floor, built-in vanity, wall mirror and overhead light fixture.



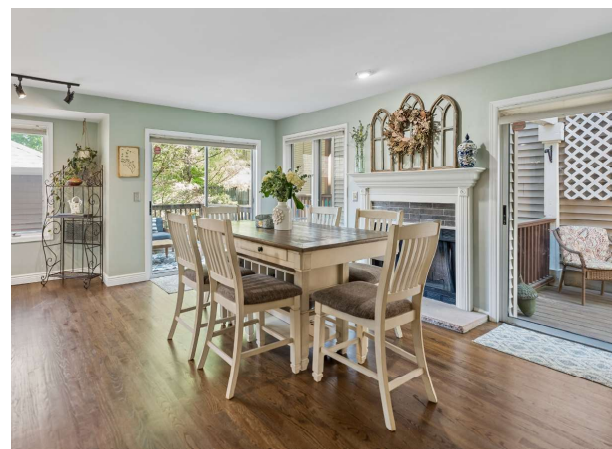


Modern and Bright

Flawlessly updated and certain to please even the most dedicated home chef, the kitchen boasts Shaker cabinets with marble counter tops and a gleaming mini-tile backsplash. Stainless steel appliances include a five-burner gas range, built-in microwave, dishwasher and refrigerator with cafe doors, freezer drawer and water and ice dispenser. A hardwood floor, undermounted stainless steel sink, recessed lighting and casement window overlooking the rear deck complete the room.



Open to the kitchen and ideally suited for casual entertaining, the family room boasts a handsome wood-burning fireplace with stone hearth and wooden mantel with fluted pilasters. Two sets of sliding doors access the side and rear decks. A hardwood floor, directional track lighting, recessed lighting and a pair of casement windows round out the room.



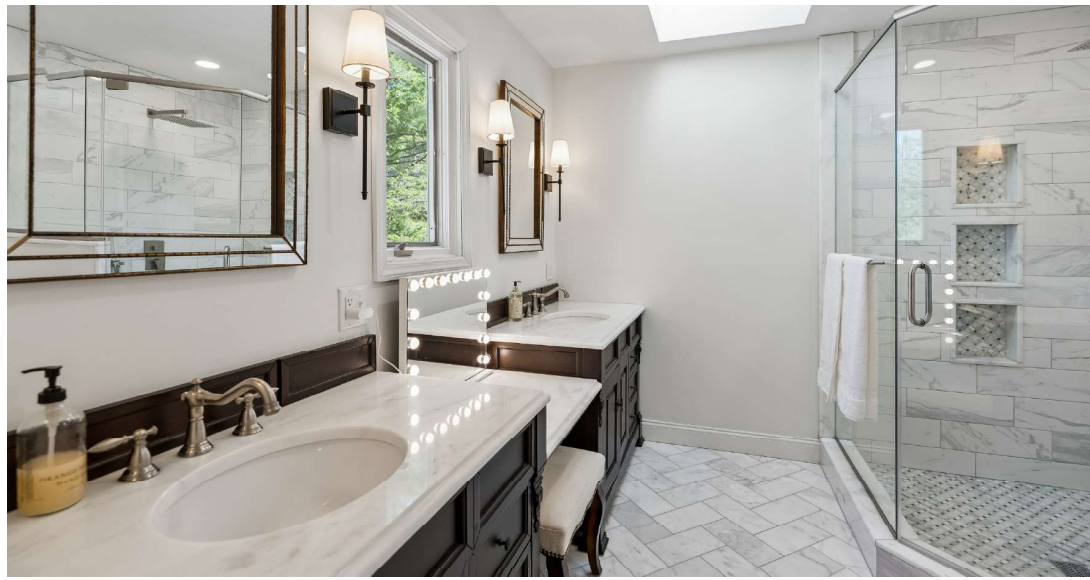
Individual Escapes

Stairs ascending to the second level first wind by a sunny reading nook with tile floor, recessed lighting and a large casement window.

Situated on the second level, the master suite is composed of a spacious bedroom and elegant private bath. The bedroom features a hardwood



floor, tray ceiling, lighted ceiling fan, walk-in closet with built-in storage and an additional double closet with mirrored doors. Framed by a pair of double-hung windows, a large picture window combines with an elevated casement window on a second wall to bathe the room with warm sunlight. The en suite bath is equipped with a marble tile floor, oversized glass-enclosed shower with tile surround and both rainmaker and hand-held shower heads, a double vanity with marble counter top, undermounted sinks and dressing table, two wall mirrors, four sconces and a skylight.



The second nicely sized bedroom includes a hardwood floor, double closet, overhead light fixture and a pair of casement windows.



The full hall bath presents a tile floor, shower-over-tub with tile surround, vanity with marble counter top and undermounted sink, wall mirror and light bar.

A center foyer, with hardwood floor, laundry closet with washer and dryer, linen closet and balustrade overlooking the living room and staircase, completes this level.

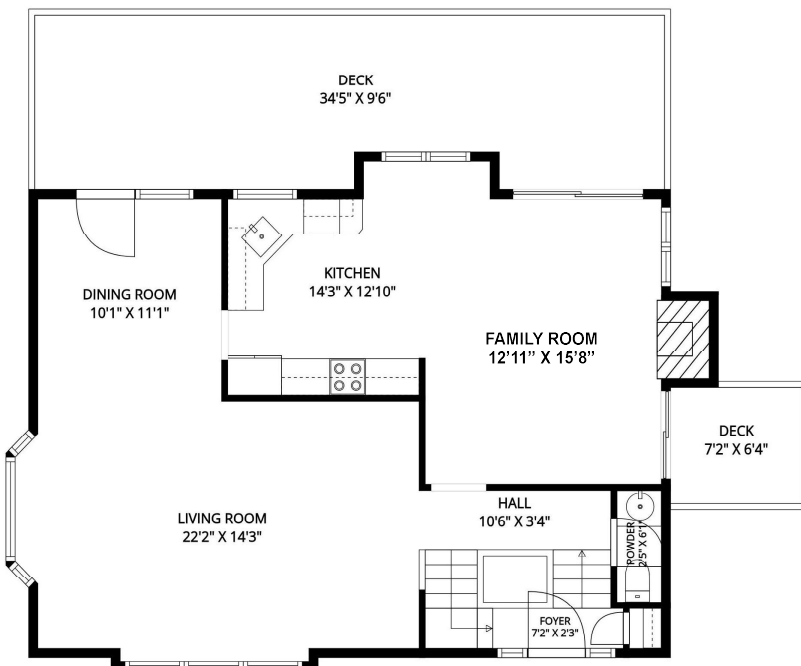




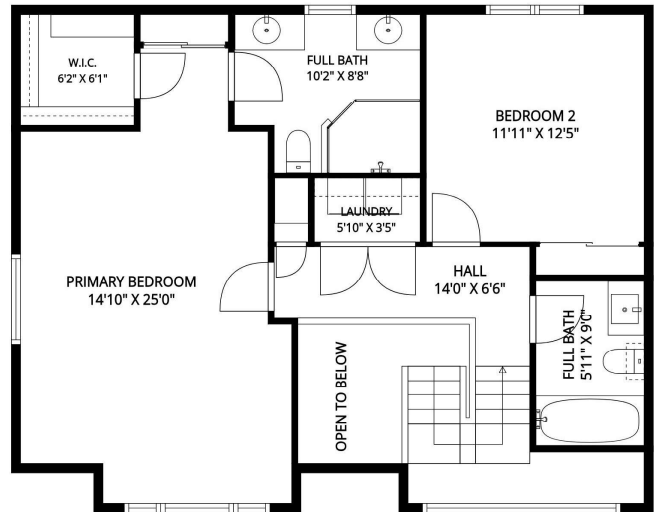
Ground Level

Equally well suited for use as an office, home gym or simply as a quiet escape, the current office features a hardwood floor and recessed lighting. A doorway provides convenient access to the two-car garage with power door openers.

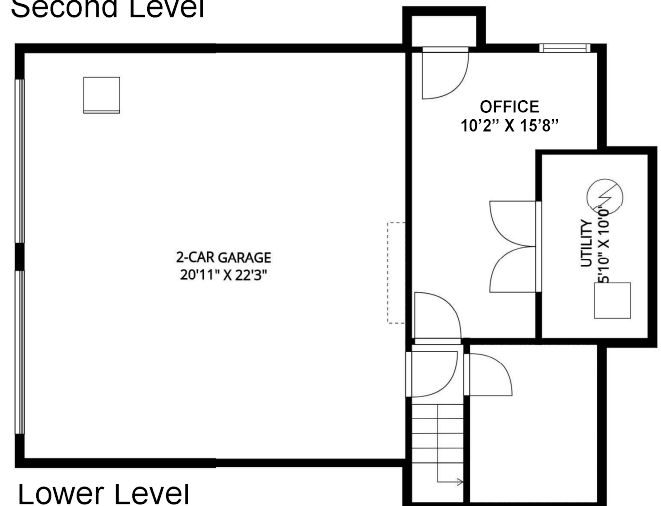
Floor Plans



First Level



Second Level



Lower Level

NOT TO SCALE: Floor plans are for illustration purposes only. Room positions and dimensions are approximate and should be independently measured for accuracy.

Highlights

GENERAL

- Seven-room luxury town-home in West Orange's highly sought-after Crystal Woods development
- Two bedrooms including a primary suite
- Two full baths, one half-bath
- Eat-in kitchen with marble counter tops
- Two private decks
- Built-in two-car garage
- Asphalt driveway with parking for two
- Nearby jitney service to Midtown-Direct trains into NYC
- Only minutes from town, parks, schools, restaurants and shopping

FIRST LEVEL

- Entry foyer: formal entry with sidelights; tile floor; coat closet; overhead light fixture; hardwood stairs to first level hallway and lower level office
- Hallway: hardwood floor; overhead light fixture; open to living room; doorways to family room and powder room; hardwood stairs to entry foyer and second level
- Living room: hardwood floor; recessed lighting; three casement windows, front; bay window (picture window, two casement windows, side); open to dining room and hallway
- Dining room: hardwood floor; chair rail; overhead light fixture; open doorway to kitchen; open to living room; French door, with broad sidelight, to rear deck
- Eat-in kitchen: hardwood floor; Shaker cabinets; marble counter tops; mini-tile backsplash; stainless steel appliances – five-burner gas range, built-in microwave, dishwasher and refrigerator with cafe doors, freezer drawer and water/ice dispenser; under-mounted stainless steel sink; recessed lighting; casement window, rear, open to family

room; open doorway to dining room

- Family room: hardwood floor; wood-burning fireplace with stone hearth and traditional wooden mantel with fluted pilasters; contemporary track lighting; recessed lighting; two casement windows, side; open to kitchen; doorway to foyer; sliding doors to side and rear decks
- Powder room: tile floor; vanity; wall mirror; overhead light fixture

SECOND LEVEL

- Reading nook: tile floor; wall shelving; recessed lighting; picture window, front
- Center foyer: hardwood floor; balustrade overlooking living room; laundry closet with washer, dryer and wall cabinets; linen closet; overhead light fixture
- Bedroom one (primary suite): hardwood floor; walk-in closet with built-in storage; double closet with mirrored doors; tray ceiling; lighted ceiling fan; picture window, two casement windows, front; elevated casement window, side; access to en suite bath
- Private full bath (primary suite): marble tile floor; over-

sized glass-enclosed shower with tile surround and rain-maker and hand-held shower heads; double vanity with marble counter top, undemounted sinks and dressing table; two wall mirrors; four wall sconces; skylight

- Bedroom two: hardwood floor; double closet; overhead light fixture; two casement windows, rear
- Full hall bath: tile floor; shower-over-tub with tile surround; vanity with marble counter top and undermounted sink; wall mirror; light bar

GROUND LEVEL

- Recreation room; hardwood floor; recessed lighting; door to garage; stairs to entry foyer and first level
- Two-car garage; power door openers; doorway to office

IMPROVEMENTS

- Installed new water heater – 2026
- Remodeled second bathroom – 2026
- Installed new storm door – 2026
- Remodeled storage room for office purposes – 2023
- Installed wall shelving in reading nook – 2022
- Gutted and remodeled master bath – 2021
- Installed new hardwood floors throughout – 2020

- Fully remodeled kitchen and installed all new appliances – 2020
- Installed new washer and dryer – 2020

AMENITIES

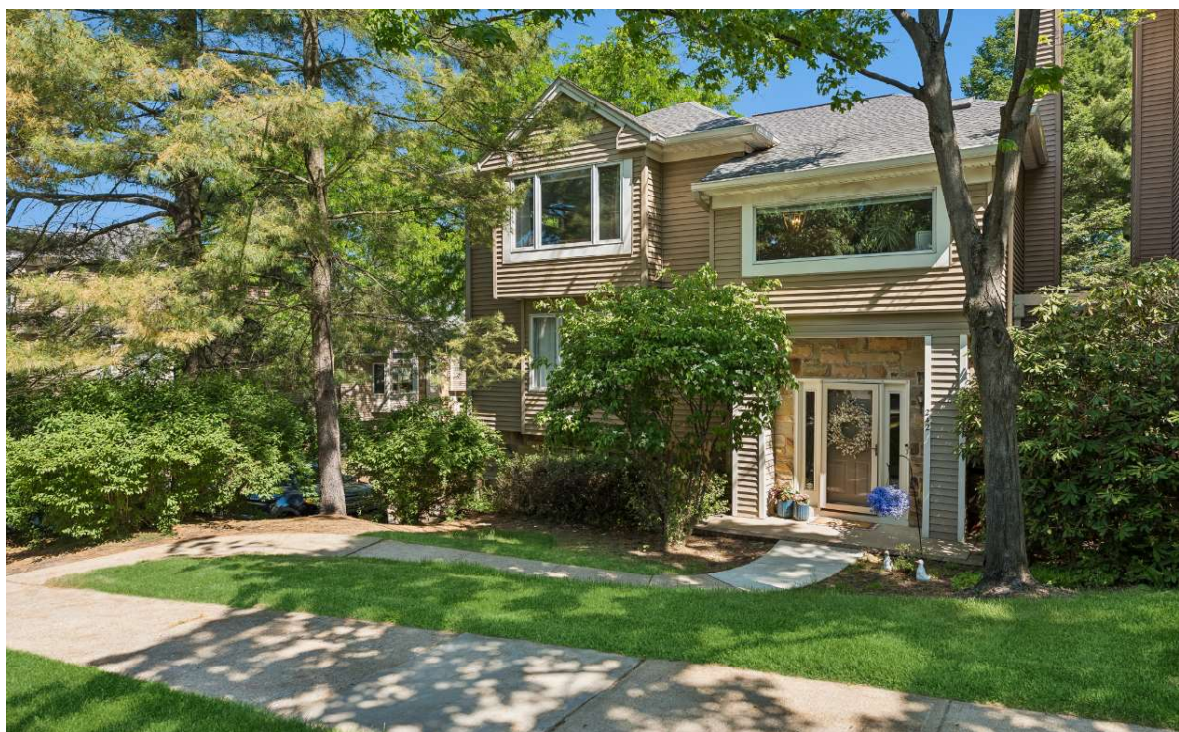
- Outdoor pool
- Tennis courts with pickleball lines
- Children's playground

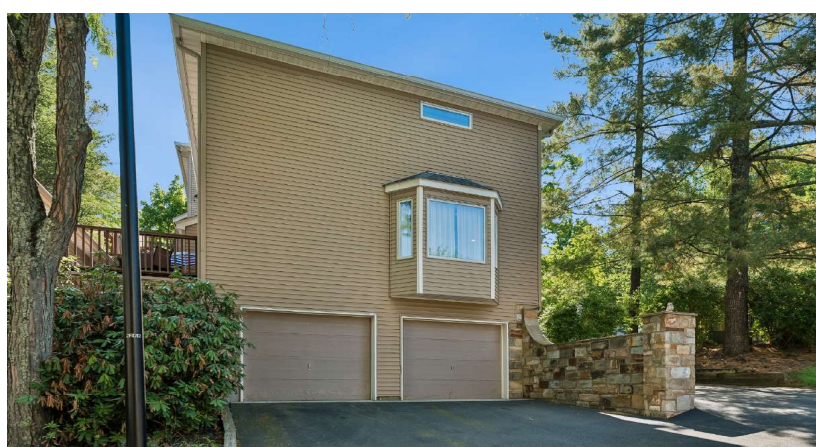
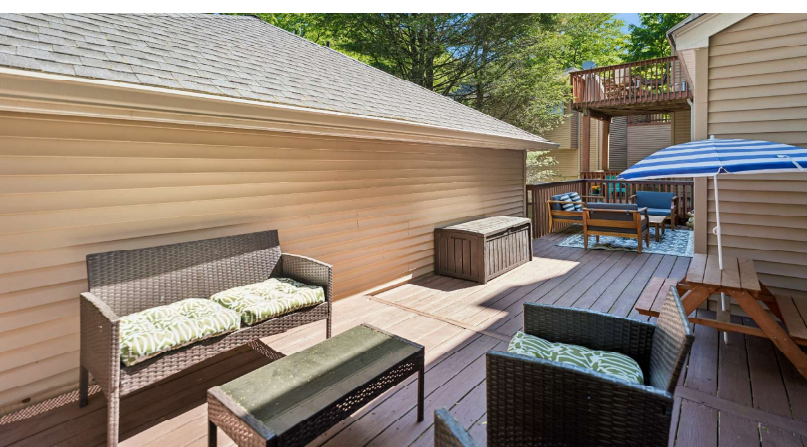
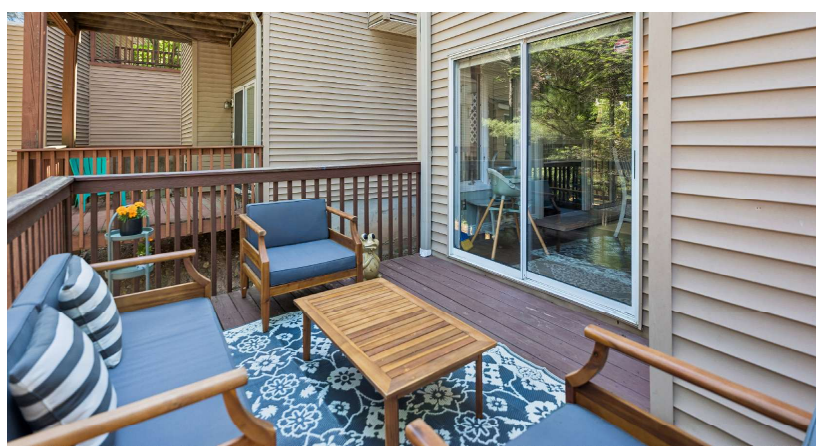
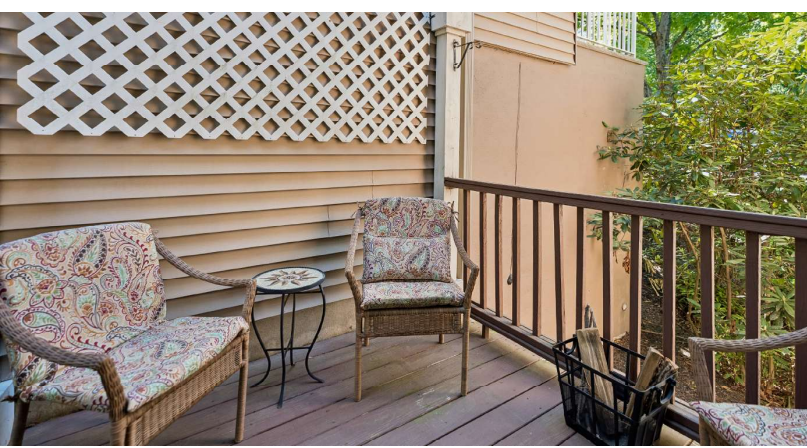
2025 ASSESSMENTS/TAXES

- Land: \$240,000
- Improvements: \$253,200
- Total: \$493,200
- 2025 taxes: \$14,778

AN IDEAL LOCATION

• West Orange is a thriving and diverse community known for its fine homes, excellent schools and vibrant business district. Among West Orange's most popular attractions are the Turtle Back Zoo, Thomas Edison National Historical Park, South Mountain Reservation (the largest park land in Essex County) and Eagle Rock Reservation with a spectacular view of New York City's famed skyline. Located only 12 miles from Manhattan and 20 minutes from Newark Liberty Airport, West Orange also is convenient to major highways including the Garden State Parkway, New Jersey Turnpike and Interstate Route 280.





Julson Badushov-Gadson
Sales Associate

732-618-4787
julson@victoriacarter.com
www.victoriacarter.com

Victoria Carter
Broker/Sales Associate

973-220-3050
victoria@victoriavarter.com
www.victoriacarter.com



Weichert, Realtors • Short Hills Office

Weichert