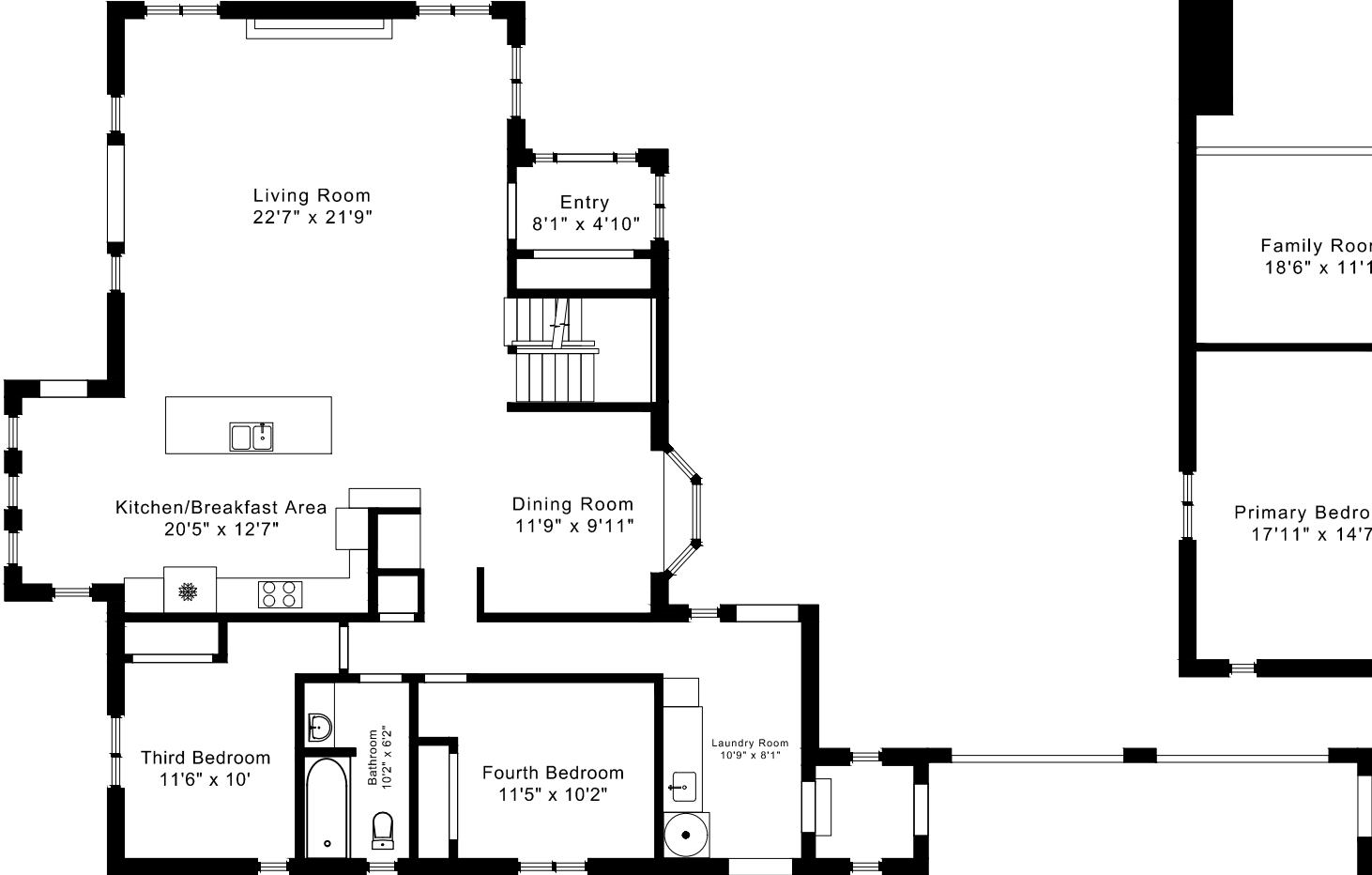
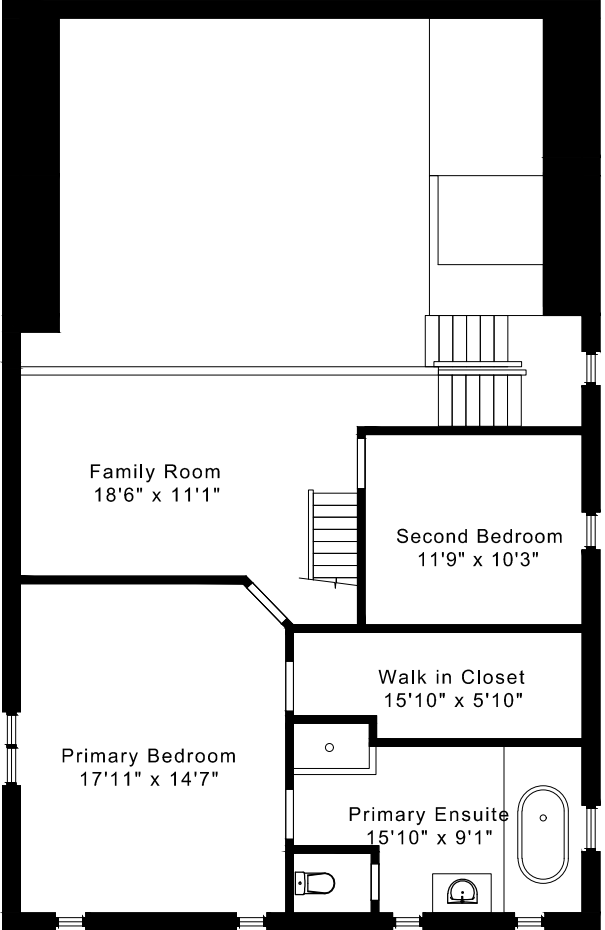


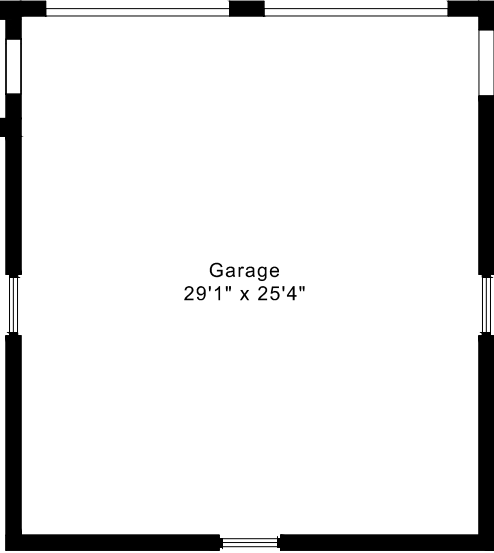
516452 7 LINE FLOOR PLANS



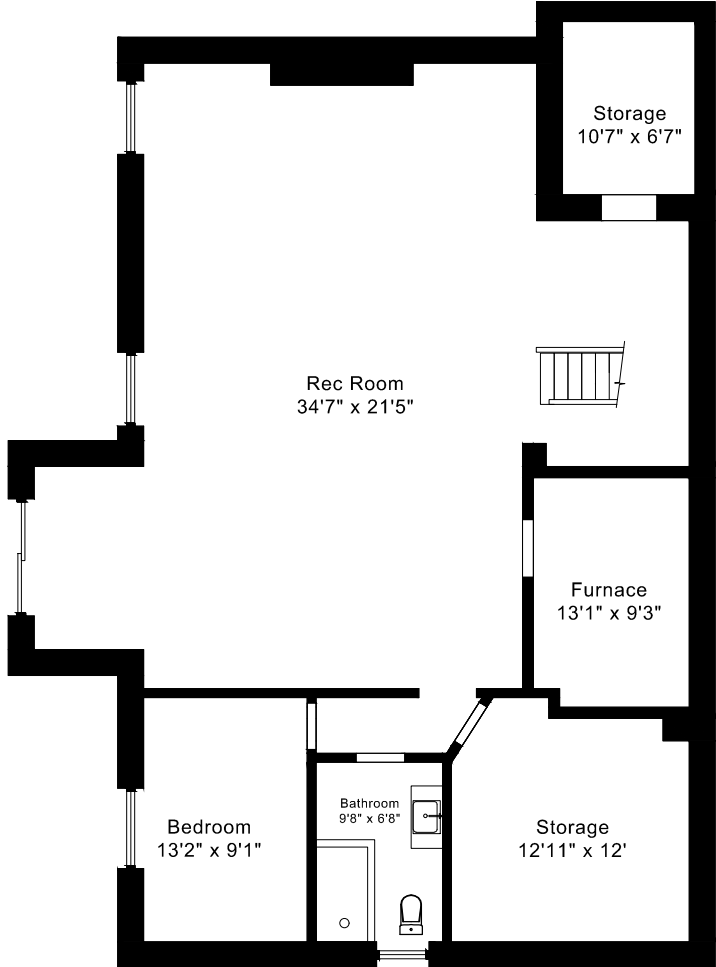
MAIN FLOOR
1860 SQUARE FEET



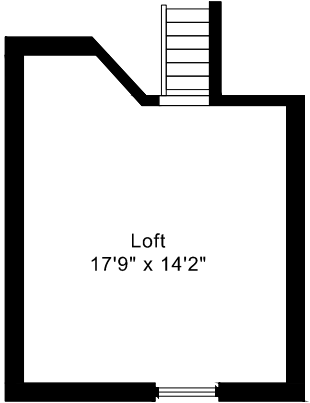
SECOND FLOOR
1010 SQUARE FEET



Garage
29'1" x 25'4"



LOWER FLOOR
1765 SQUARE FEET



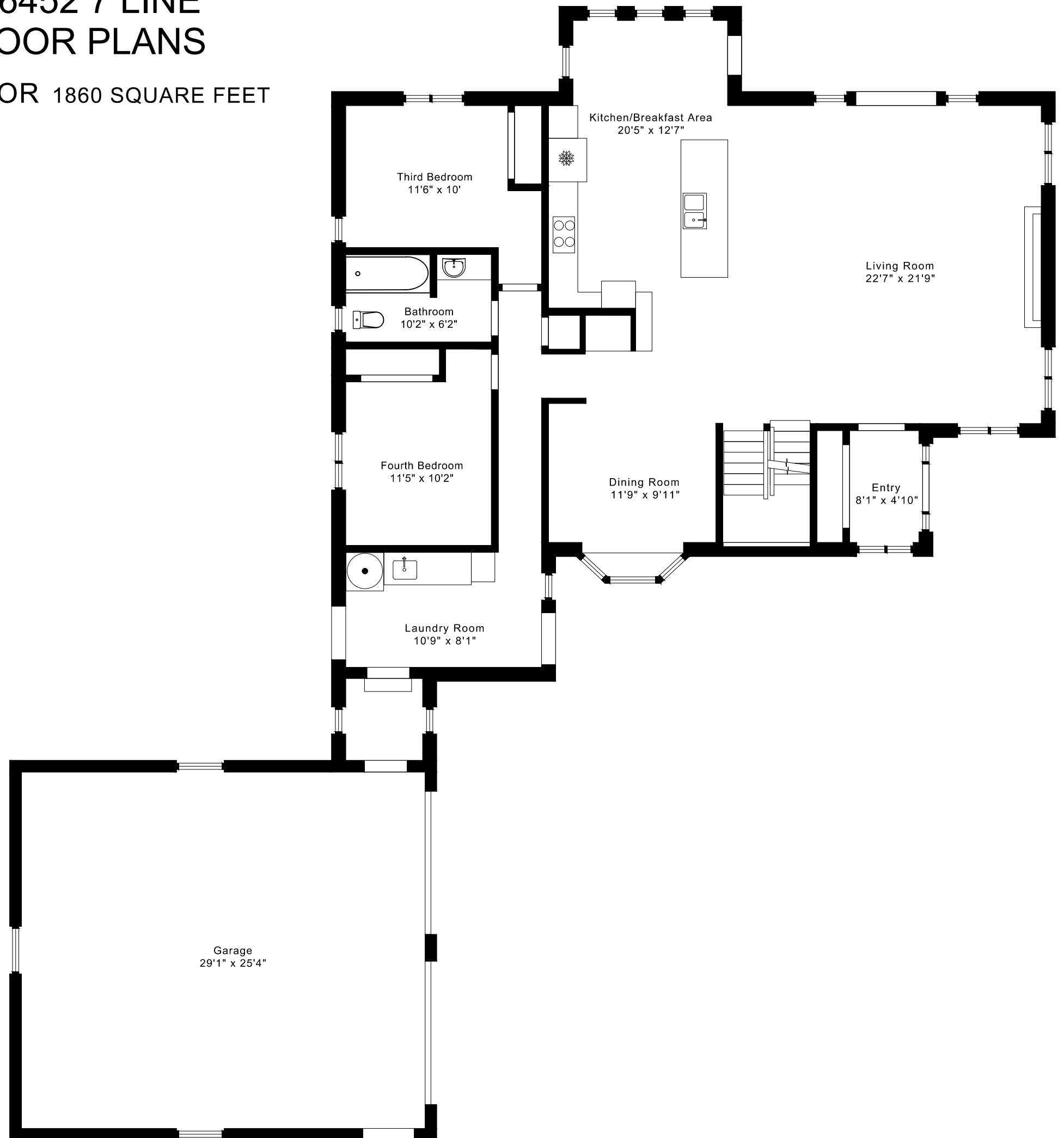
THIRD FLOOR
290 SQUARE FEET

CAPTURED ON: 3 JUN 2026
DIMENSIONS ARE APPROXIMATE AND SHOULD BE CONSIDERED ILLUSTRATIVE ONLY.

3160 sq ft + 1765 sq ft
BELOW GRADE

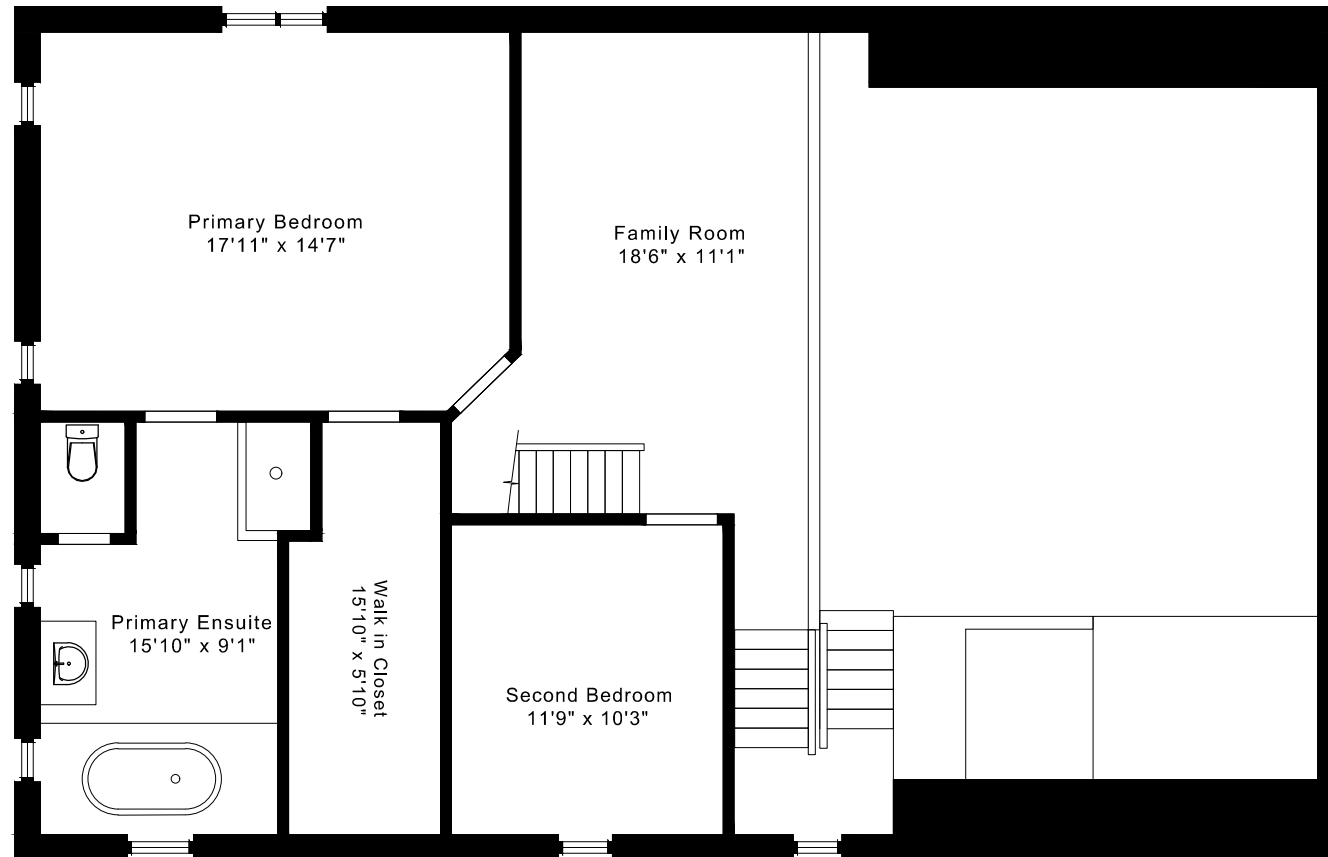
516452 7 LINE FLOOR PLANS

MAIN FLOOR 1860 SQUARE FEET

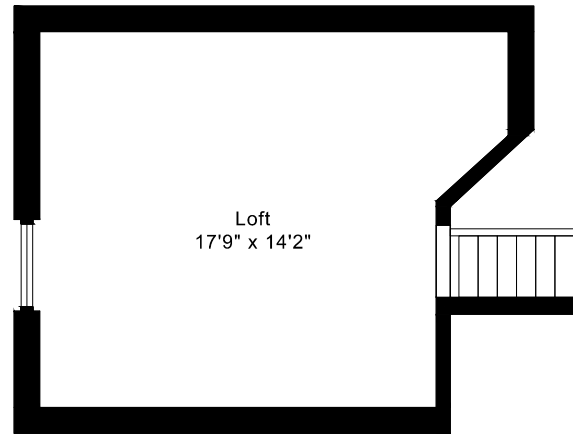


516452 7 LINE FLOOR PLANS

SECOND FLOOR 1010 SQUARE FEET

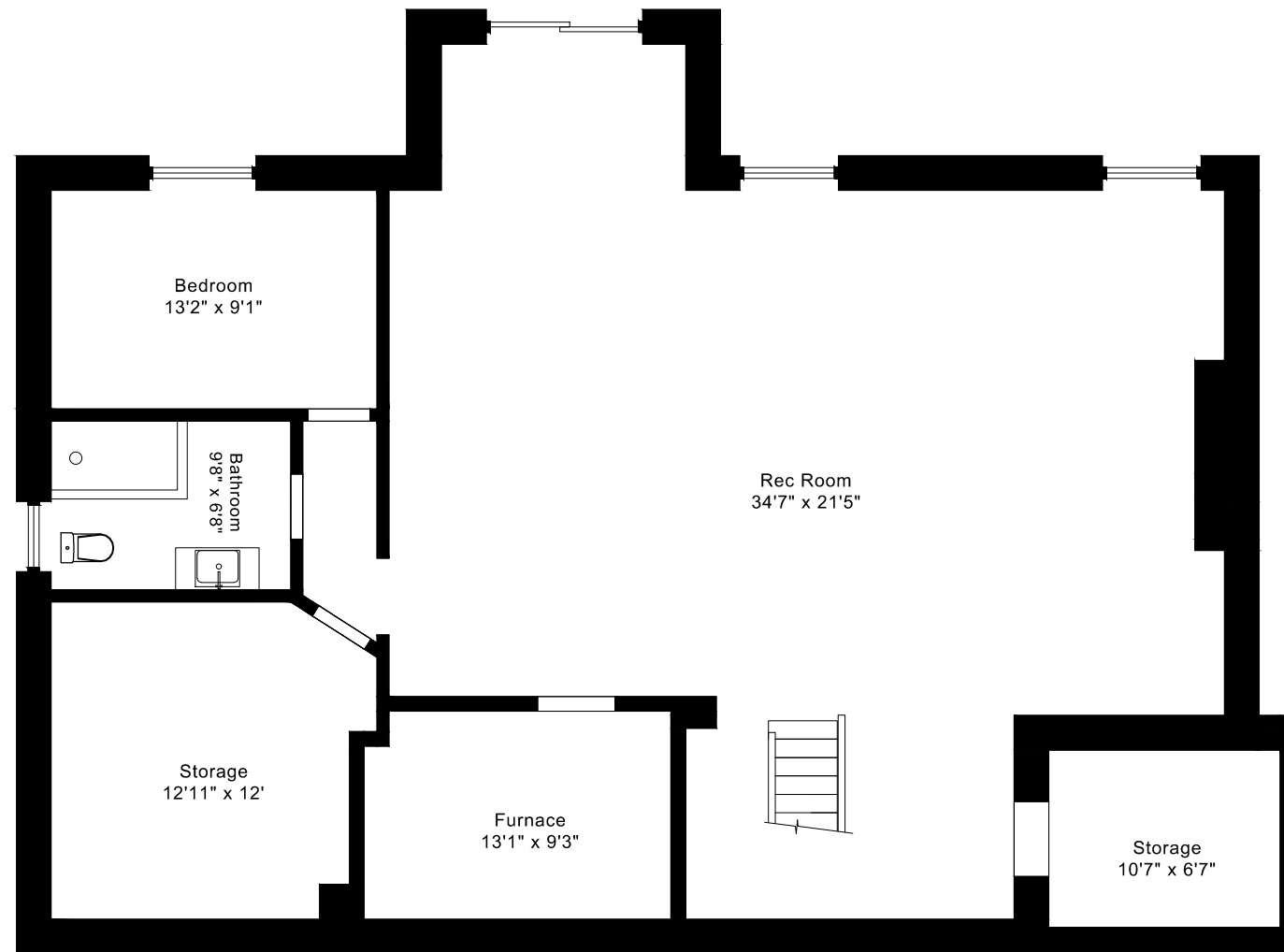


516452 7 LINE
FLOOR PLANS
THIRD FLOOR 290 SQUARE FEET



516452 7 LINE FLOOR PLANS

LOWER FLOOR 1765 SQUARE FEET



516452 7 LINE ROOM MEASUREMENTS

Floor	Room	Imperial						Metric [m]		
		Length		Width		Height		Length	Width	Height
		Feet	Inches	Feet	Inches	Feet	Inches			
Third	Loft	17	9	14	2	7	3	5,41	4,32	2,21
Second	Family Room	18	6	11	1	17	0	5,64	3,38	5,18
	Primary Bedroom	17	11	14	7	8	0	5,46	4,45	2,44
	Primary Ensuite	15	10	9	1	8	0	4,83	2,77	2,44
	Walk in Closet	15	10	5	10	8	0	4,83	1,78	2,44
	Second Bedroom	11	9	10	3	8	0	3,58	3,12	2,44
Main	Entry	8	1	4	10	8	0	2,46	1,47	2,44
	Living Room	22	7	21	9	22	0	6,88	6,63	6,71
	Dining Room	11	9	9	11	8	0	3,58	3,02	2,44
	Kitchen/Breakfast Area	20	5	12	7	8	0	6,22	3,84	2,44
	Third Bedroom	11	6	10	0	8	0	3,51	3,05	2,44
	Fourth Bedroom	11	5	10	2	8	0	3,48	3,10	2,44
	Bathroom	10	2	6	2	8	0	3,10	1,88	2,44
	Laundry Room	10	9	8	1	8	0	3,28	2,46	2,44
	Garage	29	1	25	4	9	0	8,86	7,72	2,74
Lower	Rec Room	34	7	21	5	7	11	10,54	6,53	2,41
	Bedroom	13	2	9	1	7	11	4,01	2,77	2,41
	Storage	10	7	6	7	7	11	3,23	2,01	2,41
	Bathroom	9	8	6	8	7	11	2,95	2,03	2,41
	Storage	12	11	12	0	7	11	3,94	3,66	2,41
	Furnace	13	1	9	3	7	11	3,99	2,82	2,41

The following is a disclaimer regarding the approximate nature of dimensions and floor areas listed in this document:

Disclaimer:

The dimensions and floor areas listed in this document are provided as an estimate only and are intended to be used for illustration purposes only. These measurements are not necessarily meant to be a perfect representation of the actual space.

Notes regarding measurement methods and accuracy:

The utilization of laser measurement technology during the 3D model capturing process at the location provides an accurate representation of floor plans, with a typical margin of error of 3-5%. For the most accurate and official measurement data, it is advised to consult official documents such as MPAC records, builder's pre-construction plans, or data from certified measurement companies.

Exterior wall thickness is included in the calculation of the overall square footage and is considered as a component of the footprint. The wall thickness measurement is obtained onsite whenever possible, or estimated in the event where obtaining onsite measurements is not possible, such as in the case of condominium buildings where wall thickness may vary throughout the building.