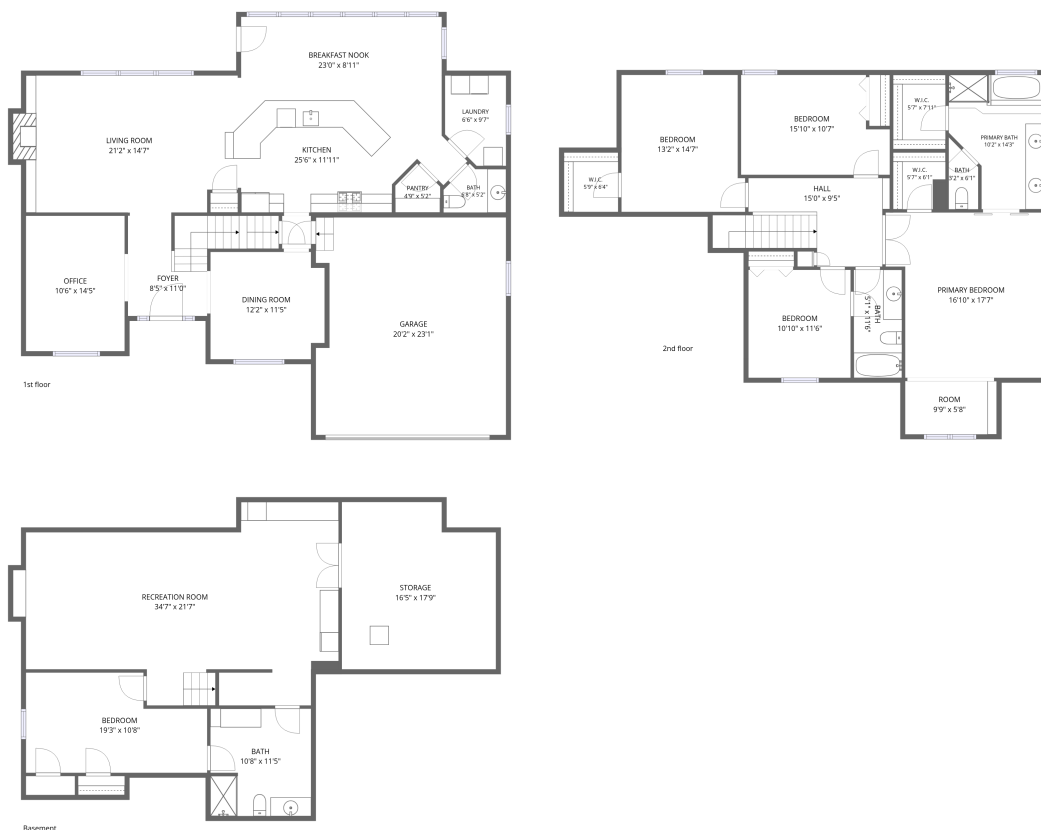


# Home data report

## 14105 West 115th Street, Olathe, Johnson County, Kansas, United States, 66062



**Total Area: 3565 sq. ft**

Basement: 937 sq. ft, 1st Floor: 1310 sq. ft, 2nd Floor: 1318 sq. ft

Excluded: Storage 273 sq. ft, Garage 454 sq. ft, Fireplace 8 sq. ft, Walls: 293 sq. ft

### Property summary

 **3** Floors

 **5** Bedrooms

 **3** Bathrooms

Home data report

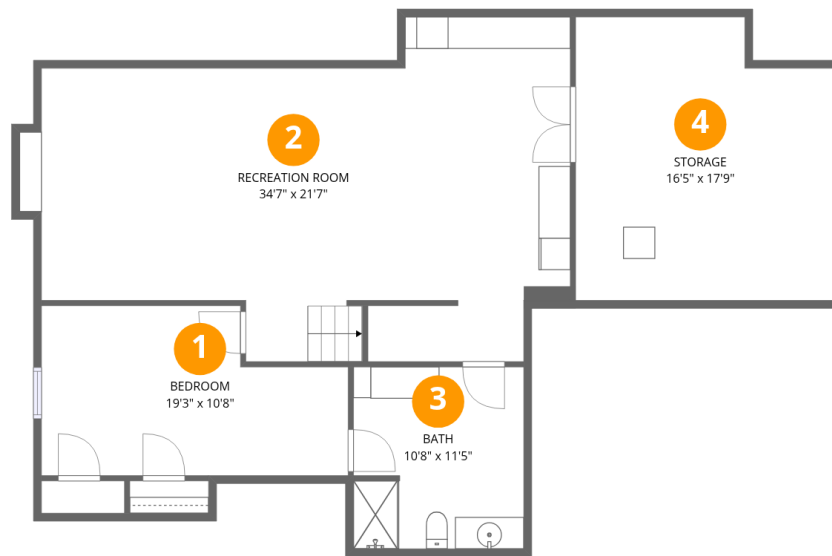
**14105 West 115th Street, Olathe, Johnson County, Kansas,  
United States, 66062**

 **1**  
Half baths

 **1**  
Garages

Home data report

14105 West 115th Street, Olathe, Johnson County, Kansas,  
United States, 66062



## Room dimensions

Floor 1 Below grade

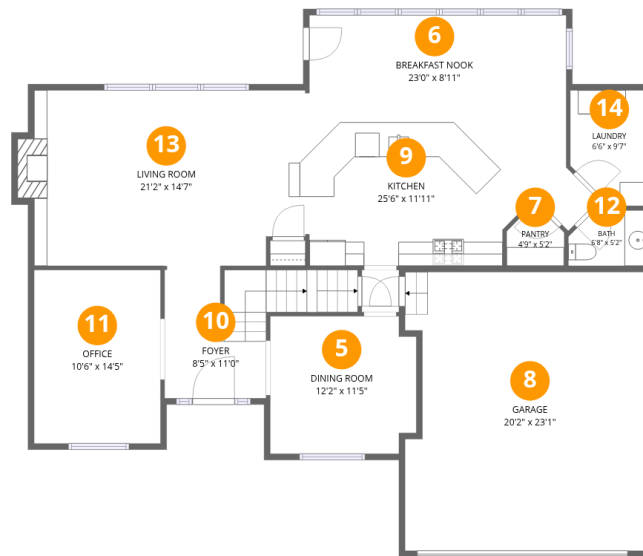
Total:937sqft

Excluded: 273sqft

#		Dimensions	sqft	Counted as living area
1	Bedroom	19'3" x 10'8"	179 sq. ft	Yes
2	Recreation Room	34'7" x 21'7"	587 sq. ft	Yes
3	Bath	10'8" x 11'5"	121 sq. ft	Yes
4	Storage	16'5" x 17'9"	273 sq. ft	No

## Home data report

14105 West 115th Street, Olathe, Johnson County, Kansas,  
United States, 66062



## Room dimensions

Floor 2

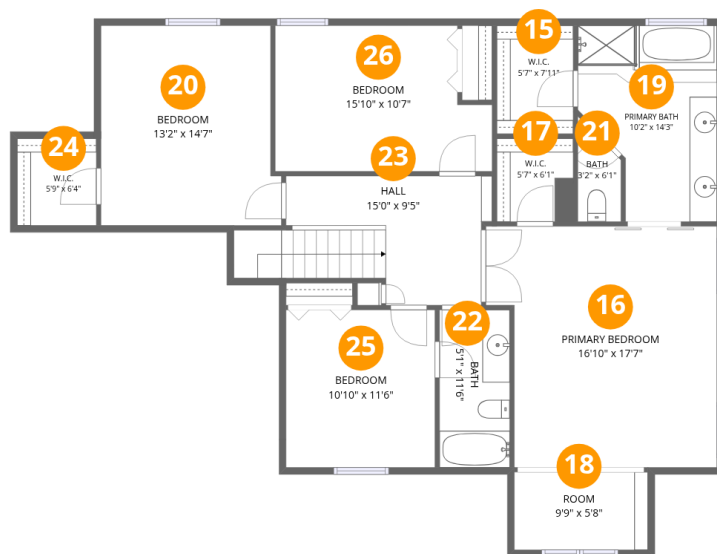
Total:1310sqft

Excluded: 462sqft

#		Dimensions	sqft	Counted as living area
5	Dining Room	12'2" x 11'5"	133 sq. ft	Yes
6	Breakfast Nook	23'0" x 8'11"	194 sq. ft	Yes
7	Pantry	4'9" x 5'2"	19 sq. ft	Yes
8	Garage	20'2" x 23'1"	454 sq. ft	No
9	Kitchen	25'6" x 11'11"	254 sq. ft	Yes
10	Foyer	8'5" x 11'0"	117 sq. ft	Yes
11	Office	10'6" x 14'5"	151 sq. ft	Yes
12	Bath	6'8" x 5'2"	29 sq. ft	Yes
13	Living Room	21'2" x 14'7"	310 sq. ft	Yes
14	Laundry	6'6" x 9'7"	57 sq. ft	Yes

## Home data report

14105 West 115th Street, Olathe, Johnson County, Kansas,  
United States, 66062



## Room dimensions

Floor 3

Total:1318sqft Excluded: 0sqft

#		Dimensions	sqft	Counted as living area
15	W.I.C.	5'7" x 7'11"	44 sq. ft	Yes
16	Primary Bedroom	16'10" x 17'7"	271 sq. ft	Yes
17	W.I.C.	5'7" x 6'1"	29 sq. ft	Yes
18	Room	9'9" x 5'8"	55 sq. ft	Yes
19	Primary Bath	10'2" x 14'3"	122 sq. ft	Yes
20	Bedroom	13'2" x 14'7"	183 sq. ft	Yes
21	Bath	3'2" x 6'1"	19 sq. ft	Yes
22	Bath	5'1" x 11'6"	59 sq. ft	Yes
23	Hall	15'0" x 9'5"	136 sq. ft	Yes
24	W.I.C.	5'9" x 6'4"	36 sq. ft	Yes
25	Bedroom	10'10" x 11'6"	125 sq. ft	Yes

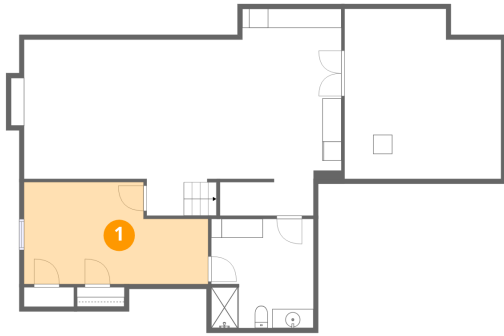
Home data report

**14105 West 115th Street, Olathe, Johnson County, Kansas,  
United States, 66062**

#		Dimensions	sqft	Counted as living area
26	Bedroom	15'10" x 10'7"	153 sq. ft	Yes

14105 West 115th Street, Olathe, Johnson County, Kansas,  
United States, 66062

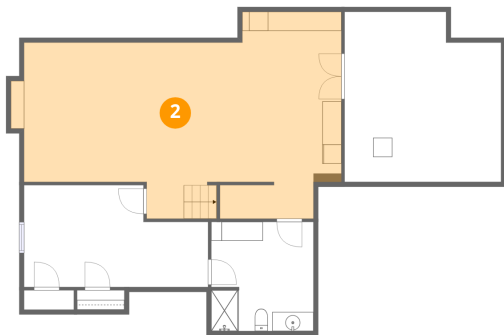
## 1 Floor 1 - Bedroom



Dimensions: 19'3" x 10'8"  
Area: 179 sq. ft  
Counted as living area: Yes

Heated: Yes  
Finished: Yes  
Enclosed: Yes  
Contiguous: Yes  
Permitted: Yes  
Wet space: No  
Addition: No  
Conversion: No

## 2 Floor 1 - Recreation Room

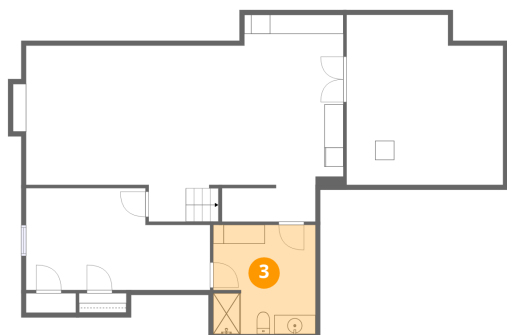


Dimensions: 34'7" x 21'7"  
Area: 587 sq. ft  
Counted as living area: Yes

Heated: Yes  
Finished: Yes  
Enclosed: Yes  
Contiguous: Yes  
Permitted: Yes  
Wet space: No  
Addition: No  
Conversion: No

14105 West 115th Street, Olathe, Johnson County, Kansas,  
United States, 66062

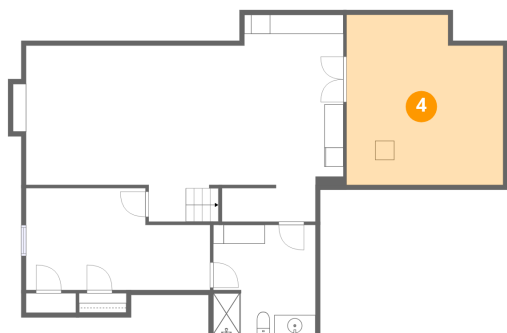
### 3 Floor 1 - Bath



Dimensions: 10'8" x 11'5"  
Area: 121 sq. ft  
Counted as living area: Yes

Heated: Yes  
Finished: Yes  
Enclosed: Yes  
Contiguous: Yes  
Permitted: Yes  
Wet space: Yes  
Addition: No  
Conversion: No

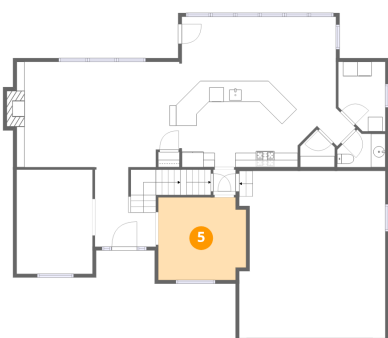
### 4 Floor 1 - Storage



Dimensions: 16'5" x 17'9"  
Area: 273 sq. ft  
Counted as living area: No

Heated: No  
Finished: No  
Enclosed: No  
Contiguous: Yes  
Permitted: Yes  
Wet space: No  
Addition: No  
Conversion: No

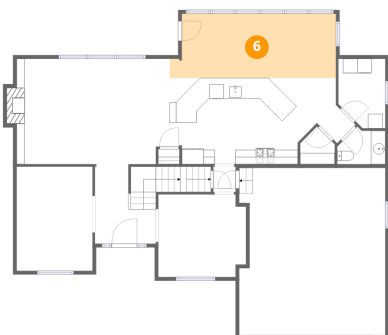
### 5 Floor 2 - Dining Room



Dimensions: 12'2" x 11'5"  
Area: 133 sq. ft  
Counted as living area: Yes

Heated: Yes  
Finished: Yes  
Enclosed: Yes  
Contiguous: Yes  
Permitted: Yes  
Wet space: No  
Addition: No  
Conversion: No

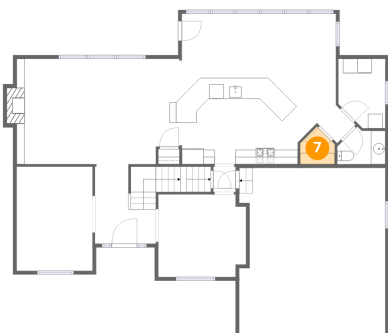
## 6 Floor 2 - Breakfast Nook



Dimensions: 23'0" x 8'11"  
Area: 194 sq. ft  
Counted as living area: Yes

Heated: Yes  
Finished: Yes  
Enclosed: Yes  
Contiguous: Yes  
Permitted: Yes  
Wet space: No  
Addition: No  
Conversion: No

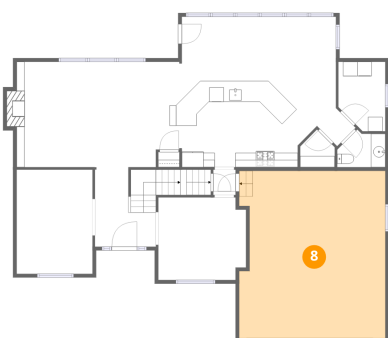
## 7 Floor 2 - Pantry



Dimensions: 4'9" x 5'2"  
Area: 19 sq. ft  
Counted as living area: Yes

Heated: Yes  
Finished: Yes  
Enclosed: Yes  
Contiguous: Yes  
Permitted: Yes  
Wet space: No  
Addition: No  
Conversion: No

## 8 Floor 2 - Garage

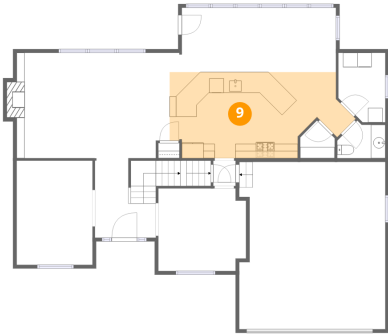


Dimensions: 20'2" x 23'1"  
Area: 454 sq. ft  
Counted as living area: No

Heated: No  
Finished: No  
Enclosed: Yes  
Contiguous: Yes  
Permitted: Yes  
Wet space: No  
Addition: No  
Conversion: No

14105 West 115th Street, Olathe, Johnson County, Kansas,  
United States, 66062

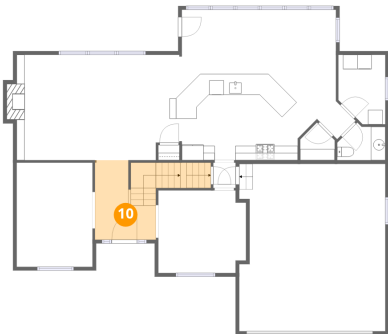
### 9 Floor 2 - Kitchen



Dimensions: 25'6" x 11'11"  
Area: 254 sq. ft  
Counted as living area: Yes

Heated: Yes  
Finished: Yes  
Enclosed: Yes  
Contiguous: Yes  
Permitted: Yes  
Wet space: No  
Addition: No  
Conversion: No

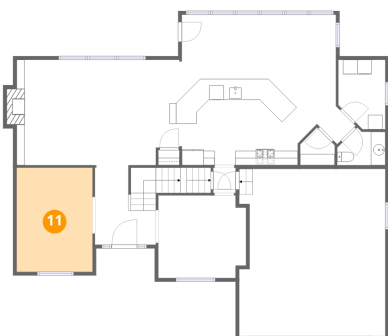
### 10 Floor 2 - Foyer



Dimensions: 8'5" x 11'0"  
Area: 117 sq. ft  
Counted as living area: Yes

Heated: Yes  
Finished: Yes  
Enclosed: Yes  
Contiguous: Yes  
Permitted: Yes  
Wet space: No  
Addition: No  
Conversion: No

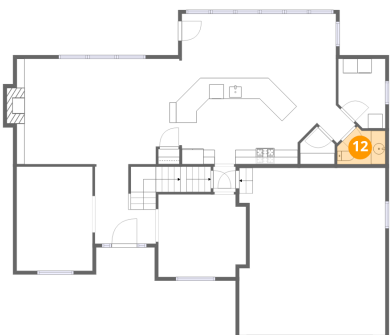
### 11 Floor 2 - Office



Dimensions: 10'6" x 14'5"  
Area: 151 sq. ft  
Counted as living area: Yes

Heated: Yes  
Finished: Yes  
Enclosed: Yes  
Contiguous: Yes  
Permitted: Yes  
Wet space: No  
Addition: No  
Conversion: No

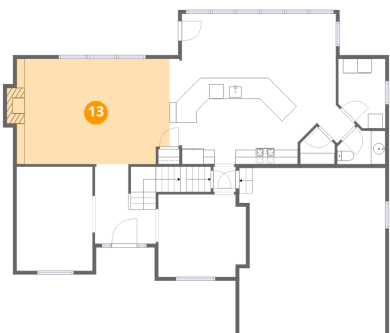
### 12 Floor 2 - Bath



Dimensions: 6'8" x 5'2"  
Area: 29 sq. ft  
Counted as living area: Yes

Heated: Yes  
Finished: Yes  
Enclosed: Yes  
Contiguous: Yes  
Permitted: Yes  
Wet space: Yes  
Addition: No  
Conversion: No

### 13 Floor 2 - Living Room



Dimensions: 21'2" x 14'7"  
Area: 310 sq. ft  
Counted as living area: Yes

Heated: Yes  
Finished: Yes  
Enclosed: Yes  
Contiguous: Yes  
Permitted: Yes  
Wet space: No  
Addition: No  
Conversion: No

### 14 Floor 2 - Laundry



Dimensions: 6'6" x 9'7"  
Area: 57 sq. ft  
Counted as living area: Yes

Heated: Yes  
Finished: Yes  
Enclosed: Yes  
Contiguous: Yes  
Permitted: Yes  
Wet space: No  
Addition: No  
Conversion: No

14105 West 115th Street, Olathe, Johnson County, Kansas,  
United States, 66062

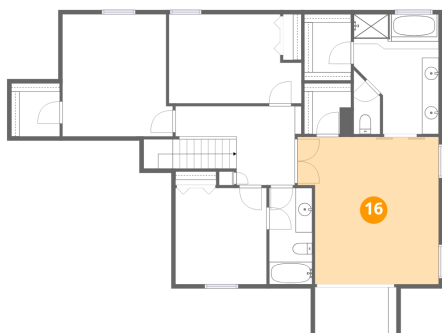
**15** Floor 3 - W.I.C.



Dimensions: 5'7" x 7'11"  
Area: 44 sq. ft  
Counted as living area: Yes

Heated: Yes  
Finished: Yes  
Enclosed: Yes  
Contiguous: Yes  
Permitted: Yes  
Wet space: No  
Addition: No  
Conversion: No

**16** Floor 3 - Primary Bedroom



Dimensions: 16'10" x 17'7"  
Area: 271 sq. ft  
Counted as living area: Yes

Heated: Yes  
Finished: Yes  
Enclosed: Yes  
Contiguous: Yes  
Permitted: Yes  
Wet space: No  
Addition: No  
Conversion: No

**17** Floor 3 - W.I.C.

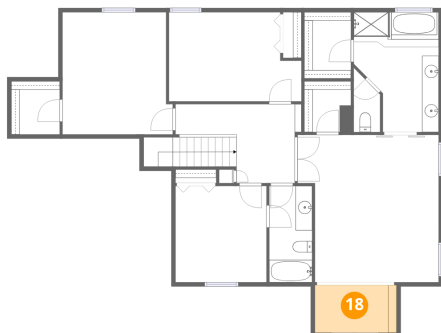


Dimensions: 5'7" x 6'1"  
Area: 29 sq. ft  
Counted as living area: Yes

Heated: Yes  
Finished: Yes  
Enclosed: Yes  
Contiguous: Yes  
Permitted: Yes  
Wet space: No  
Addition: No  
Conversion: No

14105 West 115th Street, Olathe, Johnson County, Kansas,  
United States, 66062

### 18 Floor 3 - Room



Dimensions: 9'9" x 5'8"  
Area: 55 sq. ft  
Counted as living area: Yes

Heated: Yes  
Finished: Yes  
Enclosed: Yes  
Contiguous: Yes  
Permitted: Yes  
Wet space: No  
Addition: No  
Conversion: No

### 19 Floor 3 - Primary Bath



Dimensions: 10'2" x 14'3"  
Area: 122 sq. ft  
Counted as living area: Yes

Heated: Yes  
Finished: Yes  
Enclosed: Yes  
Contiguous: Yes  
Permitted: Yes  
Wet space: Yes  
Addition: No  
Conversion: No

### 20 Floor 3 - Bedroom



Dimensions: 13'2" x 14'7"  
Area: 183 sq. ft  
Counted as living area: Yes

Heated: Yes  
Finished: Yes  
Enclosed: Yes  
Contiguous: Yes  
Permitted: Yes  
Wet space: No  
Addition: No  
Conversion: No

14105 West 115th Street, Olathe, Johnson County, Kansas,  
United States, 66062

**21** Floor 3 - Bath



Dimensions: 3'2" x 6'1"  
Area: 19 sq. ft  
Counted as living area: Yes

Heated: Yes  
Finished: Yes  
Enclosed: Yes  
Contiguous: Yes  
Permitted: Yes  
Wet space: Yes  
Addition: No  
Conversion: No

**22** Floor 3 - Bath



Dimensions: 5'1" x 11'6"  
Area: 59 sq. ft  
Counted as living area: Yes

Heated: Yes  
Finished: Yes  
Enclosed: Yes  
Contiguous: Yes  
Permitted: Yes  
Wet space: Yes  
Addition: No  
Conversion: No

**23** Floor 3 - Hall



Dimensions: 15'0" x 9'5"  
Area: 136 sq. ft  
Counted as living area: Yes

Heated: Yes  
Finished: Yes  
Enclosed: Yes  
Contiguous: Yes  
Permitted: Yes  
Wet space: No  
Addition: No  
Conversion: No

14105 West 115th Street, Olathe, Johnson County, Kansas,  
United States, 66062

**24** Floor 3 - W.I.C.



Dimensions: 5'9" x 6'4"  
Area: 36 sq. ft  
Counted as living area: Yes

Heated: Yes  
Finished: Yes  
Enclosed: Yes  
Contiguous: Yes  
Permitted: Yes  
Wet space: No  
Addition: No  
Conversion: No

**25** Floor 3 - Bedroom



Dimensions: 10'10" x 11'6"  
Area: 125 sq. ft  
Counted as living area: Yes

Heated: Yes  
Finished: Yes  
Enclosed: Yes  
Contiguous: Yes  
Permitted: Yes  
Wet space: No  
Addition: No  
Conversion: No

**26** Floor 3 - Bedroom



Dimensions: 15'10" x 10'7"  
Area: 153 sq. ft  
Counted as living area: Yes

Heated: Yes  
Finished: Yes  
Enclosed: Yes  
Contiguous: Yes  
Permitted: Yes  
Wet space: No  
Addition: No  
Conversion: No