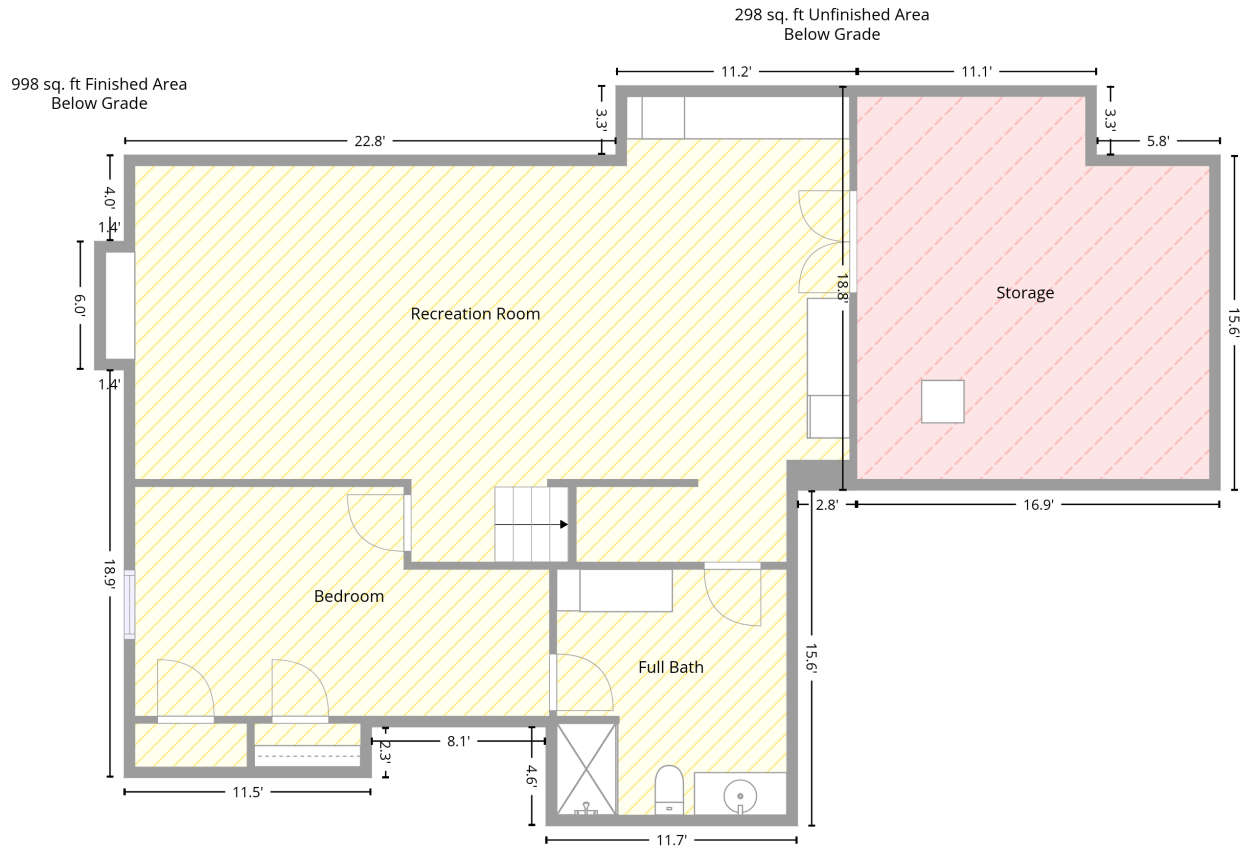


14105 West 115th Street, Olathe, Johnson County, Kansas, United States, 66062

Total area: 4106 sq. ft
Gross living area: 2810 sq. ft

Finished area: 3808 sq. ft
Non-standard finished area: 0 sq. ft

Level 1 - Below Grade



Total area: 1296 sq. ft
Gross living area: 0 sq. ft

Finished area: 998 sq. ft
Non-standard finished area: 0 sq. ft

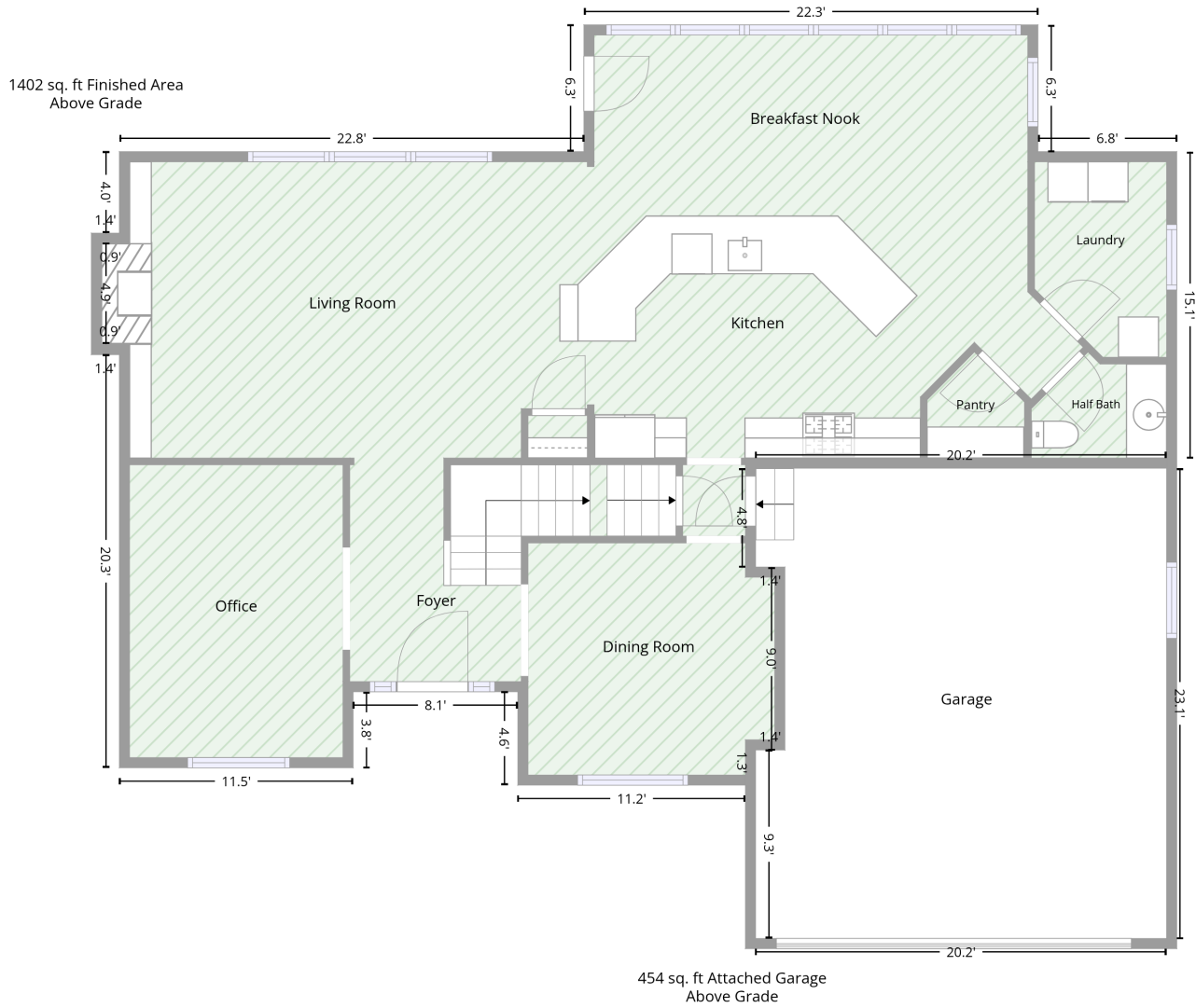
Space	Area (sq. ft)	Calculation <small>Coordinate Polygon Area Algorithm using inches</small>
Finished Area • Living area • Finished Area	998	$ \begin{aligned} & -((426 + 426) * (44 - 269.3) + (426 + 392.9) * (269.3 - 269.3) + (392.9 + 392.9) * (269.3 - 456.3) + \\ & (392.9 + 252.7) * (456.3 - 456.3) + (252.7 + 252.7) * (456.3 - 401.2) + (252.7 + 155.5) * (401.2 - \\ & 401.2) + (155.5 + 155.5) * (401.2 - 429.5) + (155.5 + 17.6) * (429.5 - 429.5) + (17.6 + 17.6) * \\ & (429.5 - 202.4) + (17.6 + 1.1) * (202.4 - 202.4) + (1.1 + 1.1) * (202.4 - 130.6) + (1.1 + 17.6) * \\ & (130.6 - 130.6) + (17.6 + 17.6) * (130.6 - 82.6) + (17.6 + 291.6) * (82.6 - 82.6) + (291.6 + 291.6) * \\ & (82.6 - 44) + (291.6 + 426) * (44 - 44)) * 0.5 * 0.00694 \end{aligned} $
STORAGE • Non-living area • Unfinished Area	298	$ \begin{aligned} & -((559.4 + 559.4) * (44 - 82.6) + (559.4 + 628.5) * (82.6 - 82.6) + (628.5 + 628.5) * (82.6 - 269.3) + \\ & (628.5 + 426) * (269.3 - 269.3) + (426 + 426) * (269.3 - 44) + (426 + 559.4) * (44 - 44)) * 0.5 * \\ & 0.00694 \end{aligned} $

14105 West 115th Street, Olathe, Johnson County, Kansas, United States, 66062

Total area: 4106 sq. ft
Gross living area: 2810 sq. ft

Finished area: 3808 sq. ft
Non-standard finished area: 0 sq. ft

Level 2



Total area: 1402 sq. ft
Gross living area: 1402 sq. ft

Finished area: 1402 sq. ft
Non-standard finished area: 0 sq. ft

14105 West 115th Street, Olathe, Johnson County, Kansas, United States, 66062

Total area: 4106 sq. ft
Gross living area: 2810 sq. ft

Finished area: 3808 sq. ft
Non-standard finished area: 0 sq. ft

Level 2

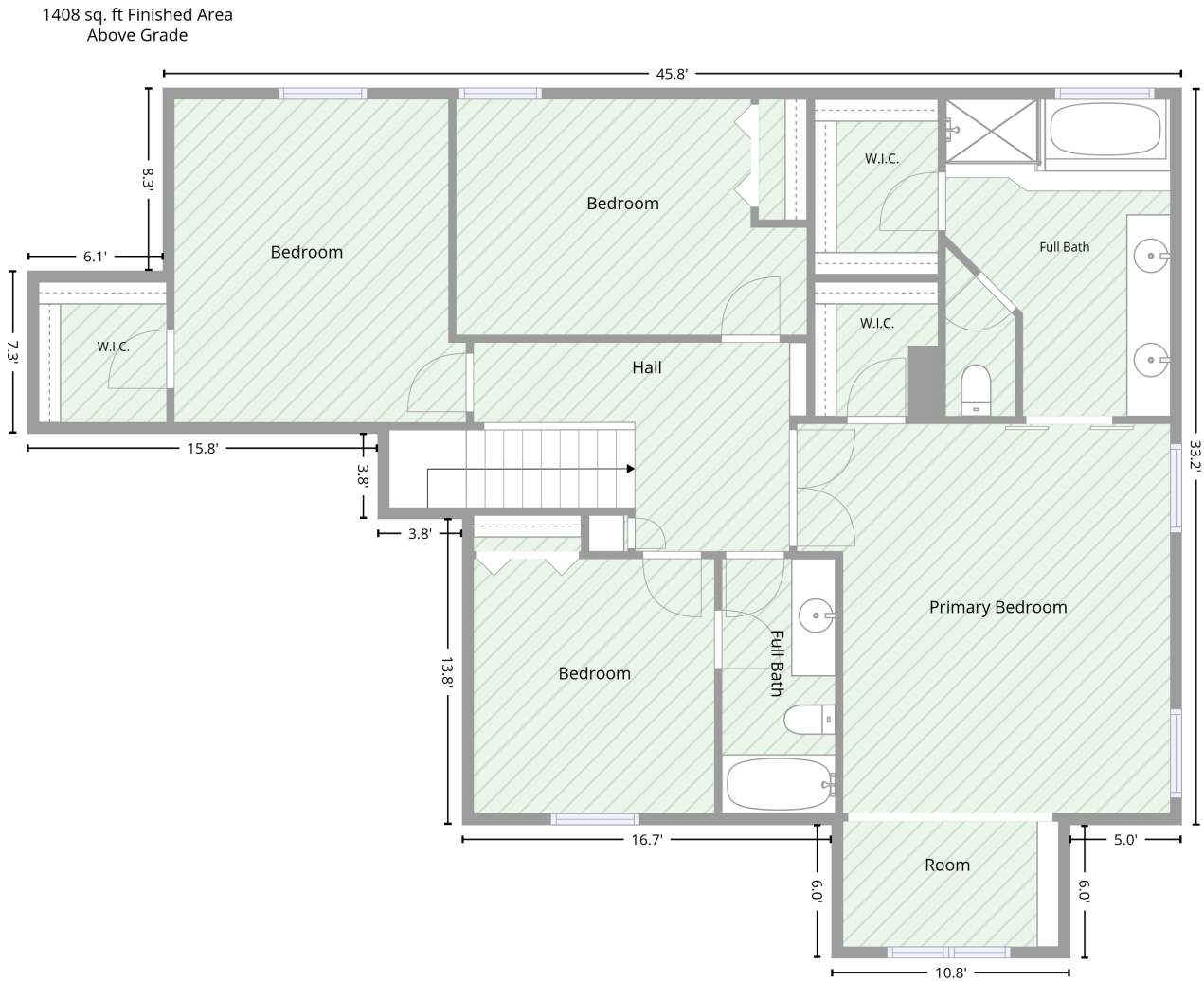
Space	Area (sq. ft)	Calculation <small>Coordinate Polygon Area Algorithm using inches</small>
Finished Area <ul style="list-style-type: none">• Living area• Finished Area	1402	$\begin{aligned} & -((559.4 + 559.4) * (7.8 - 82.6) + (559.4 + 641.3) * (82.6 - 82.6) + (641.3 + 641.3) * (82.6 - 263.3) \\ & + (641.3 + 635.3) * (263.3 - 263.3) + (635.3 + 635.3) * (263.3 - 269.3) + (635.3 + 392.9) * (269.3 - \\ & 269.3) + (392.9 + 392.9) * (269.3 - 327.6) + (392.9 + 410.2) * (327.6 - 327.6) + (410.2 + 410.2) * \\ & (327.6 - 435.6) + (410.2 + 392.9) * (435.6 - 435.6) + (392.9 + 392.9) * (435.6 - 450.3) + (392.9 + \\ & 386.9) * (450.3 - 450.3) + (386.9 + 386.9) * (450.3 - 456.3) + (386.9 + 252.7) * (456.3 - 456.3) + \\ & (252.7 + 252.7) * (456.3 - 401.2) + (252.7 + 155.5) * (401.2 - 401.2) + (155.5 + 155.5) * (401.2 - \\ & 446.1) + (155.5 + 17.6) * (446.1 - 446.1) + (17.6 + 17.6) * (446.1 - 202.4) + (17.6 + 1.1) * (202.4 - \\ & 202.4) + (1.1 + 7.1) * (202.4 - 196.4) + (7.1 + 17.6) * (196.4 - 196.1) + (17.6 + 17.6) * (196.1 - \\ & 136.6) + (17.6 + 7.1) * (136.6 - 136.6) + (7.1 + 1.1) * (136.6 - 130.6) + (1.1 + 17.6) * (130.6 - \\ & 130.6) + (17.6 + 17.6) * (130.6 - 82.6) + (17.6 + 291.6) * (82.6 - 82.6) + (291.6 + 291.6) * (82.6 - \\ & 7.8) + (291.6 + 559.4) * (7.8 - 7.8)) * 0.5 * 0.00694 \end{aligned}$
GARAGE <ul style="list-style-type: none">• Attached Garage	454	$\begin{aligned} & -((635.3 + 635.3) * (269.3 - 546.8) + (635.3 + 392.9) * (546.8 - 546.8) + (392.9 + 392.9) * (546.8 - \\ & 435.6) + (392.9 + 410.2) * (435.6 - 435.6) + (410.2 + 410.2) * (435.6 - 327.6) + (410.2 + 392.9) * \\ & (327.6 - 327.6) + (392.9 + 392.9) * (327.6 - 269.3) + (392.9 + 635.3) * (269.3 - 269.3)) * 0.5 * \\ & 0.00694 \end{aligned}$

14105 West 115th Street, Olathe, Johnson County, Kansas, United States, 66062

Total area: 4106 sq. ft
Gross living area: 2810 sq. ft

Finished area: 3808 sq. ft
Non-standard finished area: 0 sq. ft

Level 3



Total area: 1408 sq. ft
Gross living area: 1408 sq. ft

Finished area: 1408 sq. ft
Non-standard finished area: 0 sq. ft

14105 West 115th Street, Olathe, Johnson County, Kansas, United States, 66062

Total area: 4106 sq. ft
Gross living area: 2810 sq. ft

Finished area: 3808 sq. ft
Non-standard finished area: 0 sq. ft

Level 3

Space	Area (sq. ft)	Calculation <small>Coordinate Polygon Area Algorithm using inches</small>
Finished Area	1408	$-\left((641.3 + 641.3) * (82.6 - 480.7) + (641.3 + 581.1) * (480.7 - 480.7) + (581.1 + 581.1) * (480.7 - 552.8) + (581.1 + 452.3) * (552.8 - 552.8) + (452.3 + 452.3) * (552.8 - 480.7) + (452.3 + 252.7) * (480.7 - 480.7) + (252.7 + 252.7) * (480.7 - 315.4) + (252.7 + 207) * (315.4 - 315.4) + (207 + 207) * (315.4 - 269.3) + (207 + 17.6) * (269.3 - 269.3) + (17.6 + 17.6) * (269.3 - 181.4) + (17.6 + 90.9) * (181.4 - 181.4) + (90.9 + 90.9) * (181.4 - 82.6) + (90.9 + 641.3) * (82.6 - 82.6)\right) * 0.5 * 0.00694$

14105 West 115th Street, Olathe, Johnson County, Kansas, United States, 66062

Total area: 4106 sq. ft
Gross living area: 2810 sq. ft

Finished area: 3808 sq. ft
Non-standard finished area: 0 sq. ft

Property UPD

Data	Value
Structure	1
Unit	1
Level Number	1
Below Grade	true
Level Low Ceiling	false
ADU Indicator	false
Total Area	1296
Finished Area	998
Non-Standard Finished Area	0
Structure	1
Unit	1
Level Number	2
Below Grade	false
Level Low Ceiling	false
ADU Indicator	false
Total Area	1402
Finished Area	1402
Non-Standard Finished Area	0
Structure	1
Unit	1
Level Number	3

14105 West 115th Street, Olathe, Johnson County, Kansas, United States, 66062

Total area: 4106 sq. ft
Gross living area: 2810 sq. ft

Finished area: 3808 sq. ft
Non-standard finished area: 0 sq. ft

Property UPD

Data	Value
Below Grade	false
Level Low Ceiling	false
ADU Indicator	false
Total Area	1408
Finished Area	1408
Non-Standard Finished Area	0