

## Home data report

405 Parkside Avenue, Parkside, Buffalo, Erie County, New York, United States, 14216



**Total Area: 2756 sq. ft**

Basement: 0 sq. ft, 1st Floor: 1365 sq. ft, 2nd Floor: 1344 sq. ft, 3rd Floor: 47 sq. ft

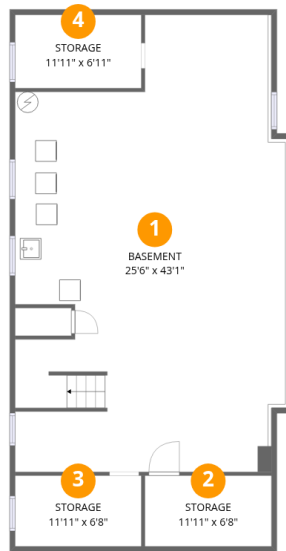
Excluded: Storage 259 sq. ft, Basement 980 sq. ft, Undefined 14 sq. ft, Porch 231 sq. ft, Fireplace 20 sq. ft, Balcony 232 sq. ft, Room 193 sq. ft, Attic 746 sq. ft, Walls: 318 sq. ft

## Property summary



Home data report

405 Parkside Avenue, Parkside, Buffalo, Erie County, New York, United States, 14216



## Room dimensions

Floor 1 Below grade

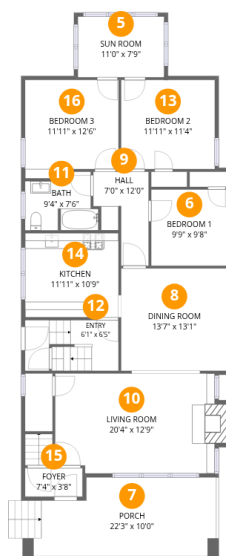
Total:0sqft

Excluded: 1253sqft

#		Dimensions	sqft	Counted as living area
1	Basement	25'6" x 43'1"	972 sq. ft	No
2	Storage	11'11" x 6'8"	80 sq. ft	No
3	Storage	11'11" x 6'8"	80 sq. ft	No
4	Storage	11'11" x 6'11"	82 sq. ft	No

Home data report

405 Parkside Avenue, Parkside, Buffalo, Erie County, New York, United States, 14216



## Room dimensions

Floor 2

Total:1365sqft Excluded: 241sqft

#		Dimensions	sqft	Counted as living area
5	Sun Room	11'0" x 7'9"	85 sq. ft	Yes
6	Bedroom 1	9'9" x 9'8"	95 sq. ft	Yes
7	Porch	22'3" x 10'0"	231 sq. ft	No
8	Dining Room	13'7" x 13'1"	177 sq. ft	Yes
9	Hall	7'0" x 12'0"	64 sq. ft	Yes
10	Living Room	20'4" x 12'9"	263 sq. ft	Yes
11	Bath	9'4" x 7'6"	58 sq. ft	Yes
12	Entry	6'1" x 6'5"	75 sq. ft	Yes
13	Bedroom 2	11'11" x 11'4"	135 sq. ft	Yes
14	Kitchen	11'11" x 10'9"	128 sq. ft	Yes
15	Foyer	7'4" x 3'8"	27 sq. ft	Yes

Home data report

**405 Parkside Avenue, Parkside, Buffalo, Erie County, New York,  
United States, 14216**

#		Dimensions	sqft	Counted as living area
16	Bedroom 3	11'11" x 12'6"	141 sq. ft	Yes

Home data report

405 Parkside Avenue, Parkside, Buffalo, Erie County, New York, United States, 14216



## Room dimensions

Floor 3

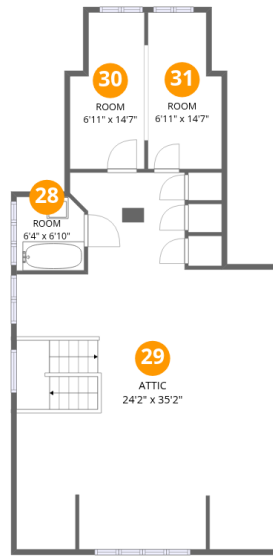
Total:1344sqft

Excluded: 242sqft

#		Dimensions	sqft	Counted as living area
17	Bath	8'10" x 7'6"	57 sq. ft	Yes
18	Bedroom 5	11'11" x 11'4"	135 sq. ft	Yes
19	Bedroom 4	10'0" x 9'8"	97 sq. ft	Yes
20	Living Room	20'4" x 12'9"	267 sq. ft	Yes
21	Dining Area	13'7" x 13'1"	177 sq. ft	Yes
22	Balcony	24'5" x 9'6"	232 sq. ft	No
23	Hall	6'9" x 12'0"	63 sq. ft	Yes
24	Hall	11'11" x 6'5"	74 sq. ft	Yes
25	Sun Room	11'0" x 7'9"	85 sq. ft	Yes
26	Bedroom 6	11'11" x 11'4"	135 sq. ft	Yes
27	Kitchen	11'11" x 10'9"	128 sq. ft	Yes

Home data report

405 Parkside Avenue, Parkside, Buffalo, Erie County, New York, United States, 14216



## Room dimensions

Floor 4

Total:47sqft Excluded: 939sqft

#		Dimensions	sqft	Counted as living area
28	Room	6'4" x 6'10"	42 sq. ft	Yes
29	Attic	24'2" x 35'2"	711 sq. ft	No
30	Room	6'11" x 14'7"	91 sq. ft	No
31	Room	6'11" x 14'7"	92 sq. ft	No

405 Parkside Avenue, Parkside, Buffalo, Erie County, New York,  
United States, 14216

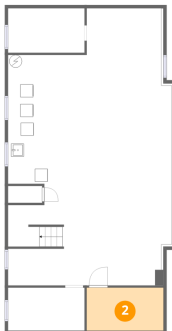
## 1 Floor 1 - Basement



Dimensions: 25'6" x 43'1"  
Area: 972 sq. ft  
Counted as living area: No

Heated: Yes  
Finished: No  
Enclosed: Yes  
Contiguous: Yes  
Permitted: Yes  
Wet space: No  
Addition: No  
Conversion: No

## 2 Floor 1 - Storage

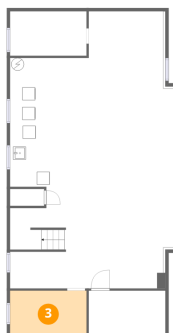


Dimensions: 11'11" x 6'8"  
Area: 80 sq. ft  
Counted as living area: No

Heated: No  
Finished: No  
Enclosed: No  
Contiguous: Yes  
Permitted: Yes  
Wet space: No  
Addition: No  
Conversion: No

405 Parkside Avenue, Parkside, Buffalo, Erie County, New York, United States, 14216

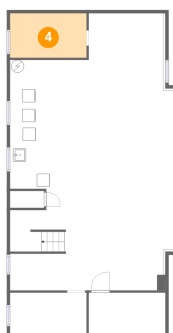
### 3 Floor 1 - Storage



Dimensions: 11'11" x 6'8"  
Area: 80 sq. ft  
Counted as living area: No

Heated: No  
Finished: No  
Enclosed: No  
Contiguous: Yes  
Permitted: Yes  
Wet space: No  
Addition: No  
Conversion: No

### 4 Floor 1 - Storage



Dimensions: 11'11" x 6'11"  
Area: 82 sq. ft  
Counted as living area: No

Heated: No  
Finished: No  
Enclosed: No  
Contiguous: Yes  
Permitted: Yes  
Wet space: No  
Addition: No  
Conversion: No

### 5 Floor 2 - Sun Room



Dimensions: 11'0" x 7'9"  
Area: 85 sq. ft  
Counted as living area: Yes

Heated: Yes  
Finished: Yes  
Enclosed: Yes  
Contiguous: Yes  
Permitted: Yes  
Wet space: No  
Addition: No  
Conversion: No

### 6 Floor 2 - Bedroom 1

---



Dimensions: 9'9" x 9'8"  
Area: 95 sq. ft  
Counted as living area: Yes

Heated: Yes  
Finished: Yes  
Enclosed: Yes  
Contiguous: Yes  
Permitted: Yes  
Wet space: No  
Addition: No  
Conversion: No

### 7 Floor 2 - Porch

---



Dimensions: 22'3" x 10'0"  
Area: 231 sq. ft  
Counted as living area: No

Heated: No  
Finished: No  
Enclosed: No  
Contiguous: Yes  
Permitted: Yes  
Wet space: No  
Addition: No  
Conversion: No

### 8 Floor 2 - Dining Room

---



Dimensions: 13'7" x 13'1"  
Area: 177 sq. ft  
Counted as living area: Yes

Heated: Yes  
Finished: Yes  
Enclosed: Yes  
Contiguous: Yes  
Permitted: Yes  
Wet space: No  
Addition: No  
Conversion: No

### 9 Floor 2 - Hall



Dimensions: 7'0" x 12'0"  
Area: 64 sq. ft  
Counted as living area: Yes

Heated: Yes  
Finished: Yes  
Enclosed: Yes  
Contiguous: Yes  
Permitted: Yes  
Wet space: No  
Addition: No  
Conversion: No

### 10 Floor 2 - Living Room



Dimensions: 20'4" x 12'9"  
Area: 263 sq. ft  
Counted as living area: Yes

Heated: Yes  
Finished: Yes  
Enclosed: Yes  
Contiguous: Yes  
Permitted: Yes  
Wet space: No  
Addition: No  
Conversion: No

### 11 Floor 2 - Bath



Dimensions: 9'4" x 7'6"  
Area: 58 sq. ft  
Counted as living area: Yes

Heated: Yes  
Finished: Yes  
Enclosed: Yes  
Contiguous: Yes  
Permitted: Yes  
Wet space: Yes  
Addition: No  
Conversion: No

## 12 Floor 2 - Entry



Dimensions: 6'1" x 6'5"  
Area: 75 sq. ft  
Counted as living area: Yes

Heated: Yes  
Finished: Yes  
Enclosed: Yes  
Contiguous: Yes  
Permitted: Yes  
Wet space: No  
Addition: No  
Conversion: No

## 13 Floor 2 - Bedroom 2



Dimensions: 11'11" x 11'4"  
Area: 135 sq. ft  
Counted as living area: Yes

Heated: Yes  
Finished: Yes  
Enclosed: Yes  
Contiguous: Yes  
Permitted: Yes  
Wet space: No  
Addition: No  
Conversion: No

## 14 Floor 2 - Kitchen



Dimensions: 11'11" x 10'9"  
Area: 128 sq. ft  
Counted as living area: Yes

Heated: Yes  
Finished: Yes  
Enclosed: Yes  
Contiguous: Yes  
Permitted: Yes  
Wet space: No  
Addition: No  
Conversion: No

**15** Floor 2 - Foyer

---



Dimensions: 7'4" x 3'8"  
Area: 27 sq. ft  
Counted as living area: Yes

Heated: Yes  
Finished: Yes  
Enclosed: Yes  
Contiguous: Yes  
Permitted: Yes  
Wet space: No  
Addition: No  
Conversion: No

**16** Floor 2 - Bedroom 3

---



Dimensions: 11'11" x 12'6"  
Area: 141 sq. ft  
Counted as living area: Yes

Heated: Yes  
Finished: Yes  
Enclosed: Yes  
Contiguous: Yes  
Permitted: Yes  
Wet space: No  
Addition: No  
Conversion: No

**17** Floor 3 - Bath

---



Dimensions: 8'10" x 7'6"  
Area: 57 sq. ft  
Counted as living area: Yes

Heated: Yes  
Finished: Yes  
Enclosed: Yes  
Contiguous: Yes  
Permitted: Yes  
Wet space: Yes  
Addition: No  
Conversion: No

**18** Floor 3 - Bedroom 5



Dimensions: 11'11" x 11'4"  
Area: 135 sq. ft  
Counted as living area: Yes

Heated: Yes  
Finished: Yes  
Enclosed: Yes  
Contiguous: Yes  
Permitted: Yes  
Wet space: No  
Addition: No  
Conversion: No

**19** Floor 3 - Bedroom 4



Dimensions: 10'0" x 9'8"  
Area: 97 sq. ft  
Counted as living area: Yes

Heated: Yes  
Finished: Yes  
Enclosed: Yes  
Contiguous: Yes  
Permitted: Yes  
Wet space: No  
Addition: No  
Conversion: No

**20** Floor 3 - Living Room



Dimensions: 20'4" x 12'9"  
Area: 267 sq. ft  
Counted as living area: Yes

Heated: Yes  
Finished: Yes  
Enclosed: Yes  
Contiguous: Yes  
Permitted: Yes  
Wet space: No  
Addition: No  
Conversion: No

### 21 Floor 3 - Dining Area



Dimensions: 13'7" x 13'1"  
Area: 177 sq. ft  
Counted as living area: Yes

Heated: Yes  
Finished: Yes  
Enclosed: Yes  
Contiguous: Yes  
Permitted: Yes  
Wet space: No  
Addition: No  
Conversion: No

### 22 Floor 3 - Balcony



Dimensions: 24'5" x 9'6"  
Area: 232 sq. ft  
Counted as living area: No

Heated: No  
Finished: No  
Enclosed: No  
Contiguous: Yes  
Permitted: Yes  
Wet space: No  
Addition: No  
Conversion: No

### 23 Floor 3 - Hall



Dimensions: 6'9" x 12'0"  
Area: 63 sq. ft  
Counted as living area: Yes

Heated: Yes  
Finished: Yes  
Enclosed: Yes  
Contiguous: Yes  
Permitted: Yes  
Wet space: No  
Addition: No  
Conversion: No

**24** Floor 3 - Hall



Dimensions: 11'11" x 6'5"  
Area: 74 sq. ft  
Counted as living area: Yes

Heated: Yes  
Finished: Yes  
Enclosed: Yes  
Contiguous: Yes  
Permitted: Yes  
Wet space: No  
Addition: No  
Conversion: No

**25** Floor 3 - Sun Room



Dimensions: 11'0" x 7'9"  
Area: 85 sq. ft  
Counted as living area: Yes

Heated: Yes  
Finished: Yes  
Enclosed: Yes  
Contiguous: Yes  
Permitted: Yes  
Wet space: No  
Addition: No  
Conversion: No

**26** Floor 3 - Bedroom 6



Dimensions: 11'11" x 11'4"  
Area: 135 sq. ft  
Counted as living area: Yes

Heated: Yes  
Finished: Yes  
Enclosed: Yes  
Contiguous: Yes  
Permitted: Yes  
Wet space: No  
Addition: No  
Conversion: No

405 Parkside Avenue, Parkside, Buffalo, Erie County, New York, United States, 14216

### 27 Floor 3 - Kitchen



Dimensions: 11'11" x 10'9"  
Area: 128 sq. ft  
Counted as living area: Yes

Heated: Yes  
Finished: Yes  
Enclosed: Yes  
Contiguous: Yes  
Permitted: Yes  
Wet space: No  
Addition: No  
Conversion: No

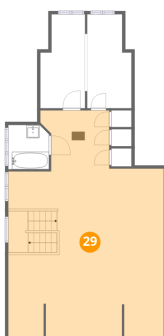
### 28 Floor 4 - Room



Dimensions: 6'4" x 6'10"  
Area: 42 sq. ft  
Counted as living area: Yes

Heated: Yes  
Finished: Yes  
Enclosed: Yes  
Contiguous: Yes  
Permitted: Yes  
Wet space: No  
Addition: No  
Conversion: No

### 29 Floor 4 - Attic



Dimensions: 24'2" x 35'2"  
Area: 711 sq. ft  
Counted as living area: No

Heated: No  
Finished: No  
Enclosed: Yes  
Contiguous: Yes  
Permitted: Yes  
Wet space: No  
Addition: No  
Conversion: No

**30** Floor 4 - Room

---



Dimensions: 6'11" x 14'7"  
Area: 91 sq. ft  
Counted as living area: No

Heated: Yes  
Finished: No  
Enclosed: Yes  
Contiguous: Yes  
Permitted: Yes  
Wet space: No  
Addition: No  
Conversion: No

**31** Floor 4 - Room

---



Dimensions: 6'11" x 14'7"  
Area: 92 sq. ft  
Counted as living area: No

Heated: Yes  
Finished: No  
Enclosed: Yes  
Contiguous: Yes  
Permitted: Yes  
Wet space: No  
Addition: No  
Conversion: No