

Home data report

**3410 Genesee Street, Cheektowaga, Erie County, New York,
United States, 14225**



Total Area: 1861 sq. ft

Basement: 0 sq. ft, 1st Floor: 971 sq. ft, 2nd Floor: 890 sq. ft

Excluded: Basement 828 sq. ft, Storage 62 sq. ft, Porch 76 sq. ft, Walls: 186 sq. ft

Property summary



3410 Genesee Street, Cheektowaga, Erie County, New York,
United States, 14225



Room dimensions

Floor 1 Below grade

Total:0sqft

Excluded: 890sqft

#		Dimensions	sqft	Counted as living area
1	Storage	7'11" x 4'0"	32 sq. ft	No
2	Basement	15'6" x 28'6"	408 sq. ft	No
3	Storage	6'11" x 4'1"	28 sq. ft	No
4	Basement	15'3" x 28'6"	401 sq. ft	No

Home data report

3410 Genesee Street, Cheektowaga, Erie County, New York,
United States, 14225



Room dimensions

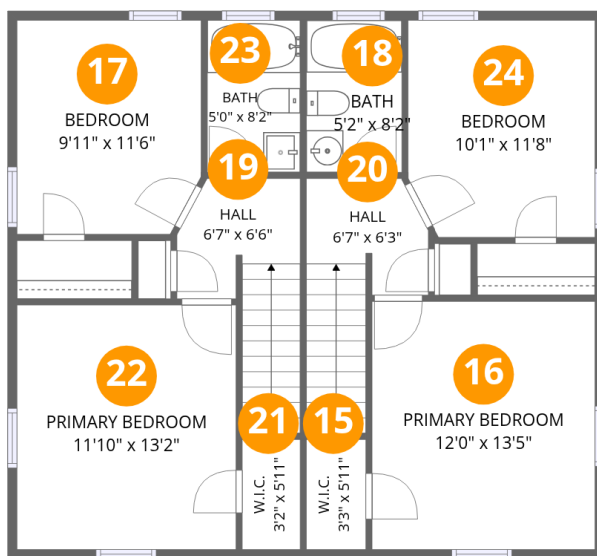
Floor 2

Total:971sqft Excluded: 76sqft

#		Dimensions	sqft	Counted as living area
5	Dining Area	7'1" x 11'9"	84 sq. ft	Yes
6	Entry	8'5" x 4'2"	35 sq. ft	Yes
7	Foyer	6'8" x 3'5"	23 sq. ft	Yes
8	Kitchen	8'10" x 11'9"	105 sq. ft	Yes
9	Living Room	12'0" x 16'5"	240 sq. ft	Yes
10	Living Room	11'10" x 16'5"	236 sq. ft	Yes
11	Dining Area	6'5" x 11'9"	75 sq. ft	Yes
12	Porch	11'2" x 7'1"	76 sq. ft	No
13	Entry	9'3" x 4'2"	39 sq. ft	Yes
14	Kitchen	8'5" x 11'9"	100 sq. ft	Yes

Home data report

3410 Genesee Street, Cheektowaga, Erie County, New York, United States, 14225



Room dimensions

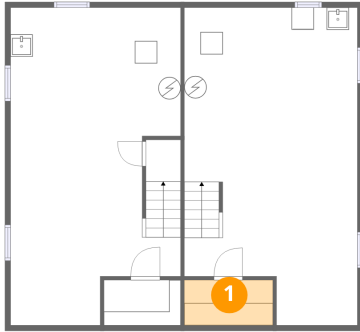
Floor 3

Total:890sqft Excluded: 0sqft

#		Dimensions	sqft	Counted as living area
15	W.I.C.	3'3" x 5'11"	19 sq. ft	Yes
16	Primary Bedroom	12'0" x 13'5"	161 sq. ft	Yes
17	Bedroom	9'11" x 11'6"	112 sq. ft	Yes
18	Bath	5'2" x 8'2"	42 sq. ft	Yes
19	Hall	6'7" x 6'6"	63 sq. ft	Yes
20	Hall	6'7" x 6'3"	62 sq. ft	Yes
21	W.I.C.	3'2" x 5'11"	19 sq. ft	Yes
22	Primary Bedroom	11'10" x 13'2"	156 sq. ft	Yes
23	Bath	5'0" x 8'2"	41 sq. ft	Yes
24	Bedroom	10'1" x 11'8"	115 sq. ft	Yes

3410 Genesee Street, Cheektowaga, Erie County, New York,
United States, 14225

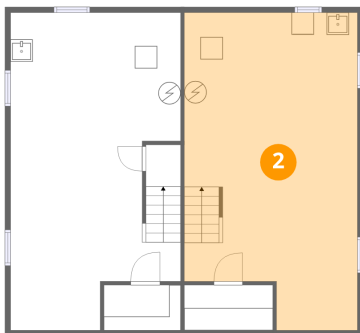
1 Floor 1 - Storage



Dimensions: 7'11" x 4'0"
Area: 32 sq. ft
Counted as living area: No

Heated: No
Finished: No
Enclosed: No
Contiguous: Yes
Permitted: Yes
Wet space: No
Addition: No
Conversion: No

2 Floor 1 - Basement

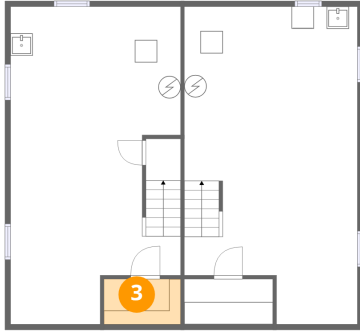


Dimensions: 15'6" x 28'6"
Area: 408 sq. ft
Counted as living area: No

Heated: Yes
Finished: No
Enclosed: Yes
Contiguous: Yes
Permitted: Yes
Wet space: No
Addition: No
Conversion: No

3410 Genesee Street, Cheektowaga, Erie County, New York,
United States, 14225

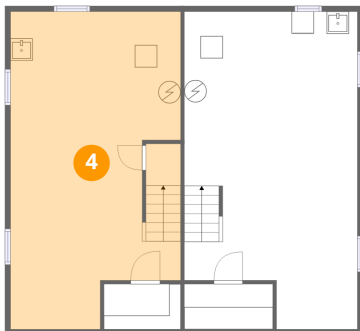
3 Floor 1 - Storage



Dimensions: 6'11" x 4'1"
Area: 28 sq. ft
Counted as living area: No

Heated: No
Finished: No
Enclosed: No
Contiguous: Yes
Permitted: Yes
Wet space: No
Addition: No
Conversion: No

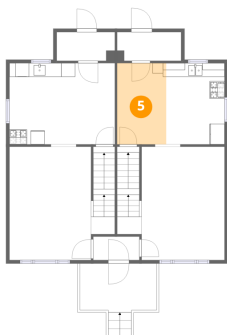
4 Floor 1 - Basement



Dimensions: 15'3" x 28'6"
Area: 401 sq. ft
Counted as living area: No

Heated: Yes
Finished: No
Enclosed: Yes
Contiguous: No
Permitted: Yes
Wet space: No
Addition: No
Conversion: No

5 Floor 2 - Dining Area

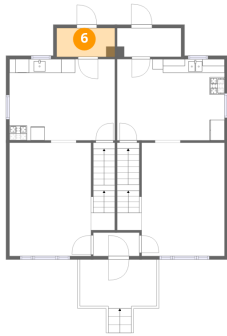


Dimensions: 7'1" x 11'9"
Area: 84 sq. ft
Counted as living area: Yes

Heated: Yes
Finished: Yes
Enclosed: Yes
Contiguous: Yes
Permitted: Yes
Wet space: No
Addition: No
Conversion: No

3410 Genesee Street, Cheektowaga, Erie County, New York,
United States, 14225

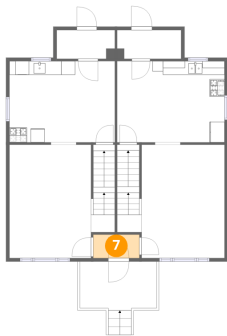
6 Floor 2 - Entry



Dimensions: 8'5" x 4'2"
Area: 35 sq. ft
Counted as living area: Yes

Heated: Yes
Finished: Yes
Enclosed: Yes
Contiguous: Yes
Permitted: Yes
Wet space: No
Addition: No
Conversion: No

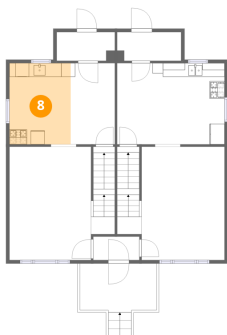
7 Floor 2 - Foyer



Dimensions: 6'8" x 3'5"
Area: 23 sq. ft
Counted as living area: Yes

Heated: Yes
Finished: Yes
Enclosed: Yes
Contiguous: Yes
Permitted: Yes
Wet space: No
Addition: No
Conversion: No

8 Floor 2 - Kitchen



Dimensions: 8'10" x 11'9"
Area: 105 sq. ft
Counted as living area: Yes

Heated: Yes
Finished: Yes
Enclosed: Yes
Contiguous: Yes
Permitted: Yes
Wet space: No
Addition: No
Conversion: No

3410 Genesee Street, Cheektowaga, Erie County, New York,
United States, 14225

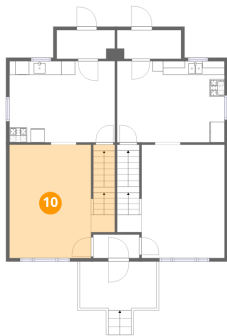
9 Floor 2 - Living Room



Dimensions: 12'0" x 16'5"
Area: 240 sq. ft
Counted as living area: Yes

Heated: Yes
Finished: Yes
Enclosed: Yes
Contiguous: Yes
Permitted: Yes
Wet space: No
Addition: No
Conversion: No

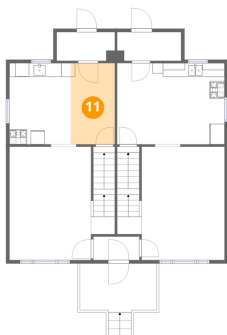
10 Floor 2 - Living Room



Dimensions: 11'10" x 16'5"
Area: 236 sq. ft
Counted as living area: Yes

Heated: Yes
Finished: Yes
Enclosed: Yes
Contiguous: Yes
Permitted: Yes
Wet space: No
Addition: No
Conversion: No

11 Floor 2 - Dining Area

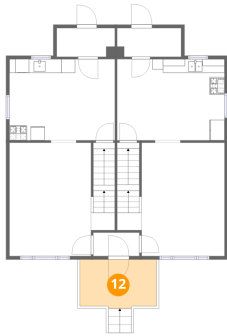


Dimensions: 6'5" x 11'9"
Area: 75 sq. ft
Counted as living area: Yes

Heated: Yes
Finished: Yes
Enclosed: Yes
Contiguous: Yes
Permitted: Yes
Wet space: No
Addition: No
Conversion: No

3410 Genesee Street, Cheektowaga, Erie County, New York,
United States, 14225

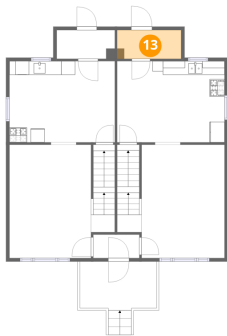
12 Floor 2 - Porch



Dimensions: 11'2" x 7'1"
Area: 76 sq. ft
Counted as living area: No

Heated: No
Finished: No
Enclosed: No
Contiguous: Yes
Permitted: Yes
Wet space: No
Addition: No
Conversion: No

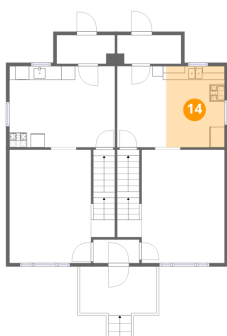
13 Floor 2 - Entry



Dimensions: 9'3" x 4'2"
Area: 39 sq. ft
Counted as living area: Yes

Heated: Yes
Finished: Yes
Enclosed: Yes
Contiguous: Yes
Permitted: Yes
Wet space: No
Addition: No
Conversion: No

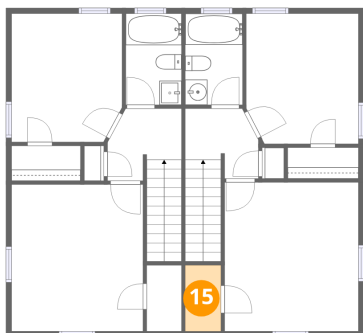
14 Floor 2 - Kitchen



Dimensions: 8'5" x 11'9"
Area: 100 sq. ft
Counted as living area: Yes

Heated: Yes
Finished: Yes
Enclosed: Yes
Contiguous: Yes
Permitted: Yes
Wet space: No
Addition: No
Conversion: No

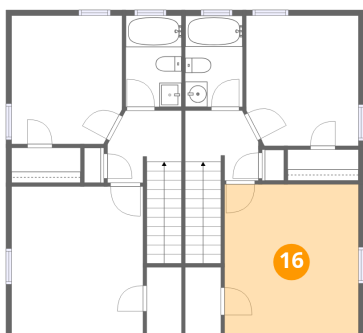
15 Floor 3 - W.I.C.



Dimensions: 3'3" x 5'11"
Area: 19 sq. ft
Counted as living area: Yes

Heated: Yes
Finished: Yes
Enclosed: Yes
Contiguous: Yes
Permitted: Yes
Wet space: No
Addition: No
Conversion: No

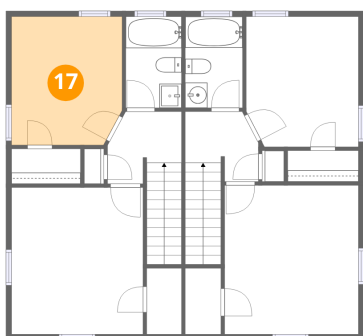
16 Floor 3 - Primary Bedroom



Dimensions: 12'0" x 13'5"
Area: 161 sq. ft
Counted as living area: Yes

Heated: Yes
Finished: Yes
Enclosed: Yes
Contiguous: Yes
Permitted: Yes
Wet space: No
Addition: No
Conversion: No

17 Floor 3 - Bedroom

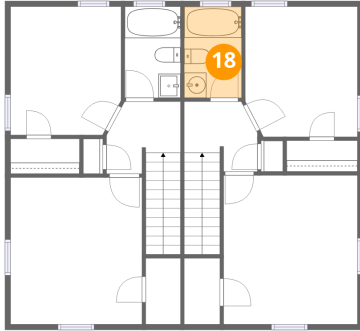


Dimensions: 9'11" x 11'6"
Area: 112 sq. ft
Counted as living area: Yes

Heated: Yes
Finished: Yes
Enclosed: Yes
Contiguous: Yes
Permitted: Yes
Wet space: No
Addition: No
Conversion: No

3410 Genesee Street, Cheektowaga, Erie County, New York,
United States, 14225

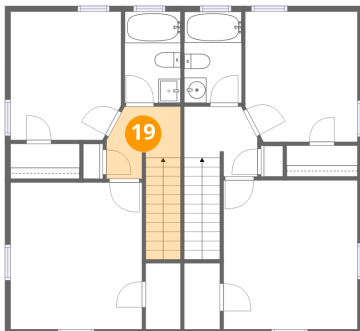
18 Floor 3 - Bath



Dimensions: 5'2" x 8'2"
Area: 42 sq. ft
Counted as living area: Yes

Heated: Yes
Finished: Yes
Enclosed: Yes
Contiguous: Yes
Permitted: Yes
Wet space: Yes
Addition: No
Conversion: No

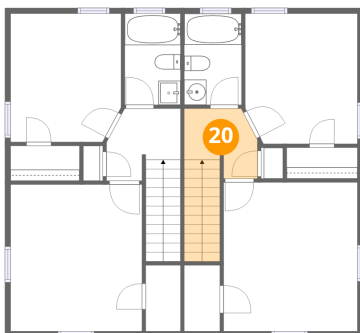
19 Floor 3 - Hall



Dimensions: 6'7" x 6'6"
Area: 63 sq. ft
Counted as living area: Yes

Heated: Yes
Finished: Yes
Enclosed: Yes
Contiguous: Yes
Permitted: Yes
Wet space: No
Addition: No
Conversion: No

20 Floor 3 - Hall

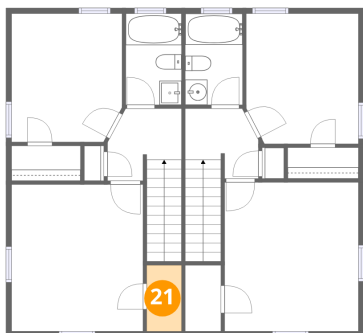


Dimensions: 6'7" x 6'3"
Area: 62 sq. ft
Counted as living area: Yes

Heated: Yes
Finished: Yes
Enclosed: Yes
Contiguous: Yes
Permitted: Yes
Wet space: No
Addition: No
Conversion: No

3410 Genesee Street, Cheektowaga, Erie County, New York,
United States, 14225

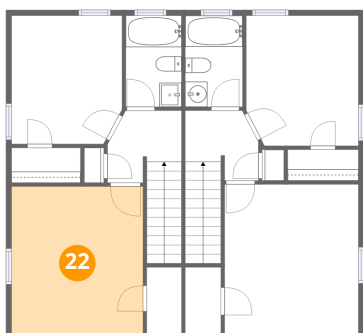
21 Floor 3 - W.I.C.



Dimensions: 3'2" x 5'11"
Area: 19 sq. ft
Counted as living area: Yes

Heated: Yes
Finished: Yes
Enclosed: Yes
Contiguous: Yes
Permitted: Yes
Wet space: No
Addition: No
Conversion: No

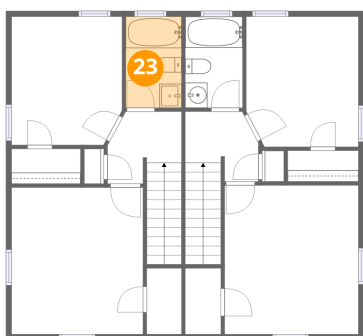
22 Floor 3 - Primary Bedroom



Dimensions: 11'10" x 13'2"
Area: 156 sq. ft
Counted as living area: Yes

Heated: Yes
Finished: Yes
Enclosed: Yes
Contiguous: Yes
Permitted: Yes
Wet space: No
Addition: No
Conversion: No

23 Floor 3 - Bath



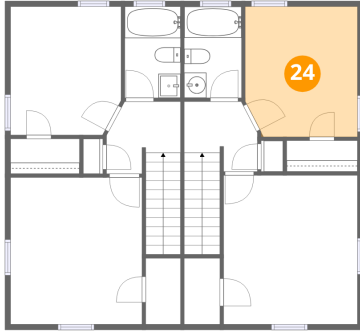
Dimensions: 5'0" x 8'2"
Area: 41 sq. ft
Counted as living area: Yes

Heated: Yes
Finished: Yes
Enclosed: Yes
Contiguous: Yes
Permitted: Yes
Wet space: Yes
Addition: No
Conversion: No

Home data report

3410 Genesee Street, Cheektowaga, Erie County, New York,
United States, 14225

24 Floor 3 - Bedroom



Dimensions: 10'1" x 11'8"
Area: 115 sq. ft
Counted as living area: Yes

Heated: Yes
Finished: Yes
Enclosed: Yes
Contiguous: Yes
Permitted: Yes
Wet space: No
Addition: No
Conversion: No