



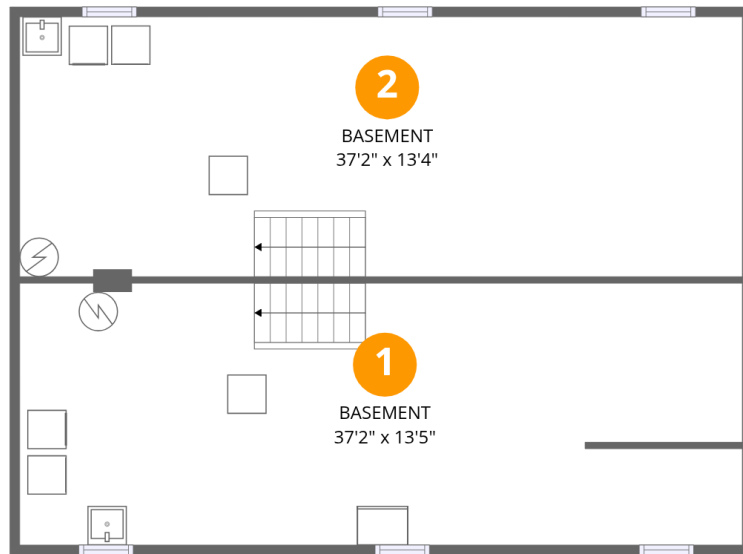
**Total Area: 2395 sq. ft**

Basement: 0 sq. ft, 1st Floor: 1388 sq. ft, 2nd Floor: 1007 sq. ft

Excluded: Basement 1008 sq. ft, Walls: 213 sq. ft

## Property summary





## Room dimensions

Floor 1 Below grade

Total:0sqft

Excluded: 1008sqft

#		Dimensions	sqft	Counted as living area
1	Basement	37'2" x 13'5"	496 sq. ft	No
2	Basement	37'2" x 13'4"	496 sq. ft	No



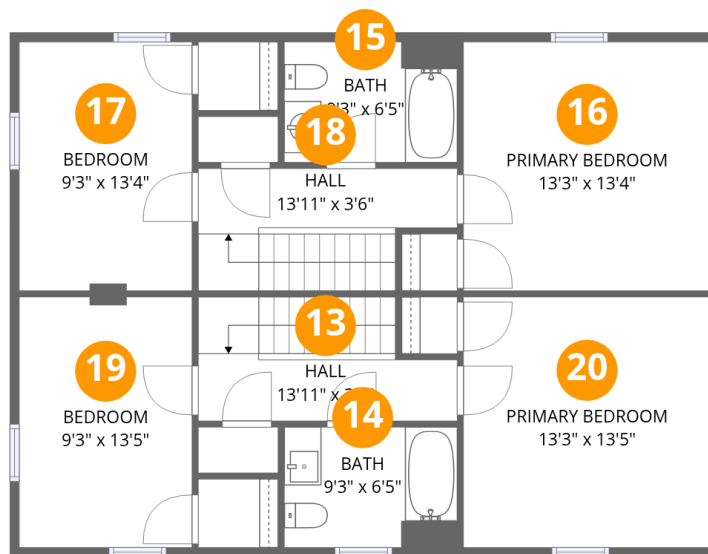
## Room dimensions

Floor 2

Total:1388sqft

Excluded: 0sqft

#		Dimensions	sqft	Counted as living area
3	Living Room	13'3" x 13'4"	177 sq. ft	Yes
4	Dining Room	13'10" x 11'11"	209 sq. ft	Yes
5	Living Room	13'3" x 13'5"	179 sq. ft	Yes
6	Kitchen	9'3" x 13'5"	125 sq. ft	Yes
7	Entry	5'11" x 8'7"	46 sq. ft	Yes
8	Entry	5'11" x 8'11"	53 sq. ft	Yes
9	Foyer	9'0" x 11'5"	102 sq. ft	Yes
10	Dining Room	13'11" x 12'1"	211 sq. ft	Yes
11	Kitchen	10'9" x 13'4"	128 sq. ft	Yes
12	Foyer	9'0" x 11'3"	101 sq. ft	Yes



## Room dimensions

Floor 3

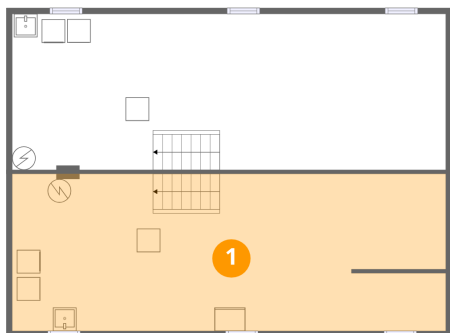
Total:1007sqft

Excluded: 0sqft

#		Dimensions	sqft	Counted as living area
13	Hall	13'11" x 3'7"	81 sq. ft	Yes
14	Bath	9'3" x 6'5"	60 sq. ft	Yes
15	Bath	9'3" x 6'5"	60 sq. ft	Yes
16	Primary Bedroom	13'3" x 13'4"	177 sq. ft	Yes
17	Bedroom	9'3" x 13'4"	124 sq. ft	Yes
18	Hall	13'11" x 3'6"	80 sq. ft	Yes
19	Bedroom	9'3" x 13'5"	125 sq. ft	Yes
20	Primary Bedroom	13'3" x 13'5"	179 sq. ft	Yes



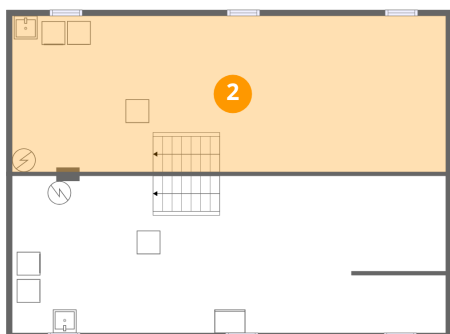
## 1 Floor 1 - Basement



Dimensions: 37'2" x 13'5"  
Area: 496 sq. ft  
Counted as living area: No

Heated: Yes  
Finished: No  
Enclosed: Yes  
Contiguous: Yes  
Permitted: Yes  
Wet space: No  
Addition: No  
Conversion: No

## 2 Floor 1 - Basement

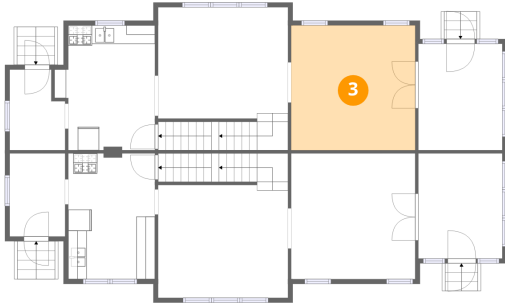


Dimensions: 37'2" x 13'4"  
Area: 496 sq. ft  
Counted as living area: No

Heated: Yes  
Finished: No  
Enclosed: Yes  
Contiguous: Yes  
Permitted: Yes  
Wet space: No  
Addition: No  
Conversion: No



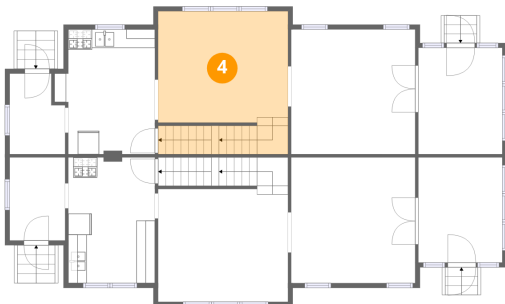
### 3 Floor 2 - Living Room



Dimensions: 13'3" x 13'4"  
Area: 177 sq. ft  
Counted as living area: Yes

Heated: Yes  
Finished: Yes  
Enclosed: Yes  
Contiguous: Yes  
Permitted: Yes  
Wet space: No  
Addition: No  
Conversion: No

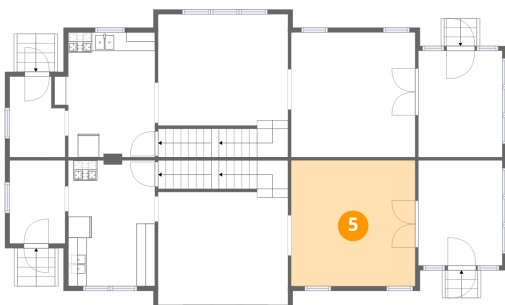
### 4 Floor 2 - Dining Room



Dimensions: 13'10" x 11'11"  
Area: 209 sq. ft  
Counted as living area: Yes

Heated: Yes  
Finished: Yes  
Enclosed: Yes  
Contiguous: Yes  
Permitted: Yes  
Wet space: No  
Addition: No  
Conversion: No

### 5 Floor 2 - Living Room

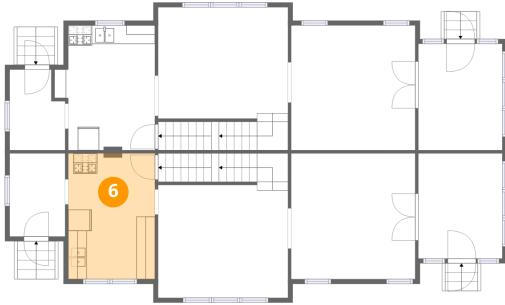


Dimensions: 13'3" x 13'5"  
Area: 179 sq. ft  
Counted as living area: Yes

Heated: Yes  
Finished: Yes  
Enclosed: Yes  
Contiguous: Yes  
Permitted: Yes  
Wet space: No  
Addition: No  
Conversion: No



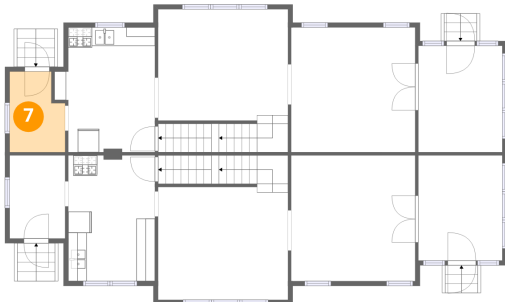
## 6 Floor 2 - Kitchen



Dimensions: 9'3" x 13'5"  
Area: 125 sq. ft  
Counted as living area: Yes

Heated: Yes  
Finished: Yes  
Enclosed: Yes  
Contiguous: Yes  
Permitted: Yes  
Wet space: No  
Addition: No  
Conversion: No

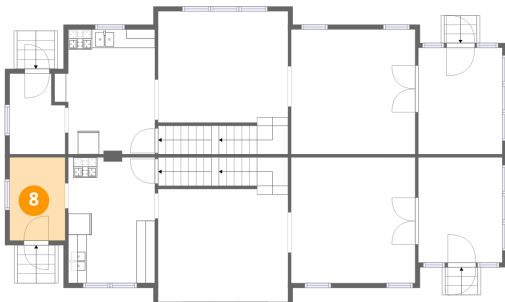
## 7 Floor 2 - Entry



Dimensions: 5'11" x 8'7"  
Area: 46 sq. ft  
Counted as living area: Yes

Heated: Yes  
Finished: Yes  
Enclosed: Yes  
Contiguous: Yes  
Permitted: Yes  
Wet space: No  
Addition: No  
Conversion: No

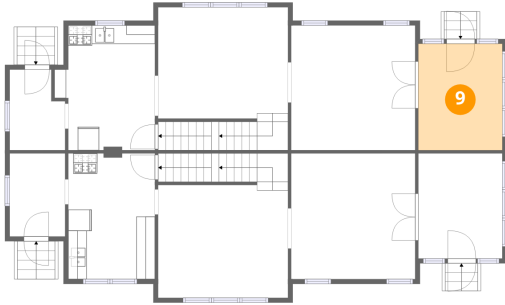
## 8 Floor 2 - Entry



Dimensions: 5'11" x 8'11"  
Area: 53 sq. ft  
Counted as living area: Yes

Heated: Yes  
Finished: Yes  
Enclosed: Yes  
Contiguous: Yes  
Permitted: Yes  
Wet space: No  
Addition: No  
Conversion: No

## 9 Floor 2 - Foyer



Dimensions: 9'0" x 11'5"  
Area: 102 sq. ft  
Counted as living area: Yes

Heated: Yes  
Finished: Yes  
Enclosed: Yes  
Contiguous: Yes  
Permitted: Yes  
Wet space: No  
Addition: No  
Conversion: No

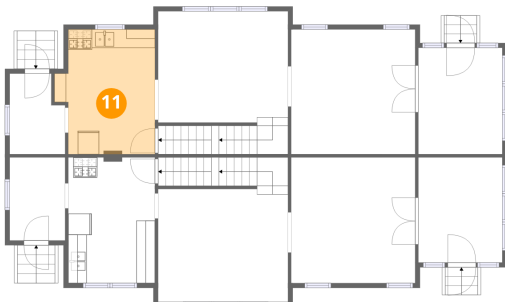
## 10 Floor 2 - Dining Room



Dimensions: 13'11" x 12'1"  
Area: 211 sq. ft  
Counted as living area: Yes

Heated: Yes  
Finished: Yes  
Enclosed: Yes  
Contiguous: Yes  
Permitted: Yes  
Wet space: No  
Addition: No  
Conversion: No

## 11 Floor 2 - Kitchen

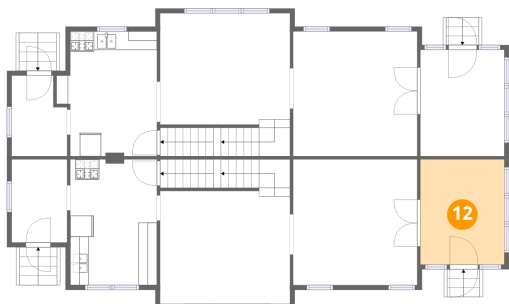


Dimensions: 10'9" x 13'4"  
Area: 128 sq. ft  
Counted as living area: Yes

Heated: Yes  
Finished: Yes  
Enclosed: Yes  
Contiguous: Yes  
Permitted: Yes  
Wet space: No  
Addition: No  
Conversion: No



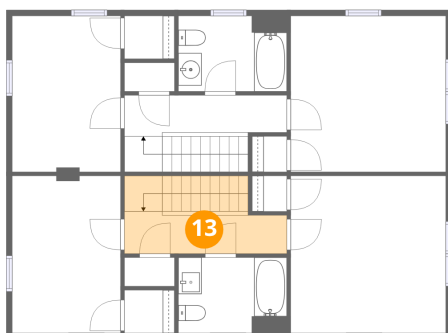
## 12 Floor 2 - Foyer



Dimensions: 9'0" x 11'3"  
Area: 101 sq. ft  
Counted as living area: Yes

Heated: Yes  
Finished: Yes  
Enclosed: Yes  
Contiguous: Yes  
Permitted: Yes  
Wet space: No  
Addition: No  
Conversion: No

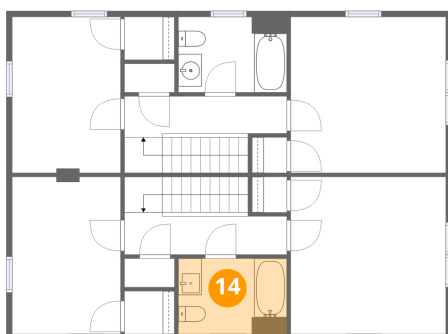
## 13 Floor 3 - Hall



Dimensions: 13'11" x 3'7"  
Area: 81 sq. ft  
Counted as living area: Yes

Heated: Yes  
Finished: Yes  
Enclosed: Yes  
Contiguous: Yes  
Permitted: Yes  
Wet space: No  
Addition: No  
Conversion: No

## 14 Floor 3 - Bath

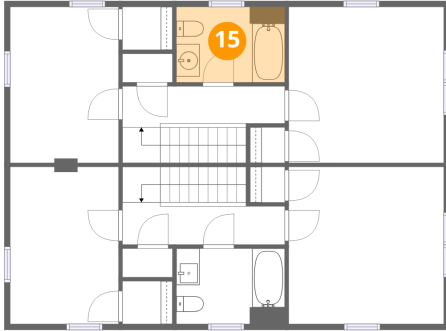


Dimensions: 9'3" x 6'5"  
Area: 60 sq. ft  
Counted as living area: Yes

Heated: Yes  
Finished: Yes  
Enclosed: Yes  
Contiguous: Yes  
Permitted: Yes  
Wet space: Yes  
Addition: No  
Conversion: No



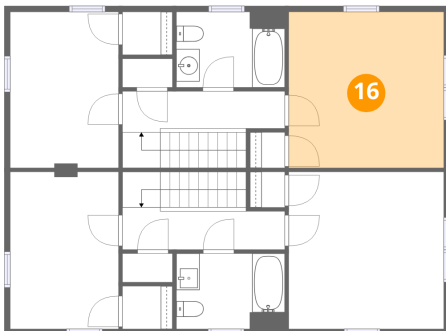
### 15 Floor 3 - Bath



Dimensions: 9'3" x 6'5"  
Area: 60 sq. ft  
Counted as living area: Yes

Heated: Yes  
Finished: Yes  
Enclosed: Yes  
Contiguous: Yes  
Permitted: Yes  
Wet space: Yes  
Addition: No  
Conversion: No

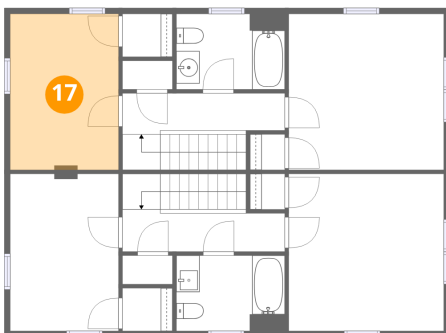
### 16 Floor 3 - Primary Bedroom



Dimensions: 13'3" x 13'4"  
Area: 177 sq. ft  
Counted as living area: Yes

Heated: Yes  
Finished: Yes  
Enclosed: Yes  
Contiguous: Yes  
Permitted: Yes  
Wet space: No  
Addition: No  
Conversion: No

### 17 Floor 3 - Bedroom

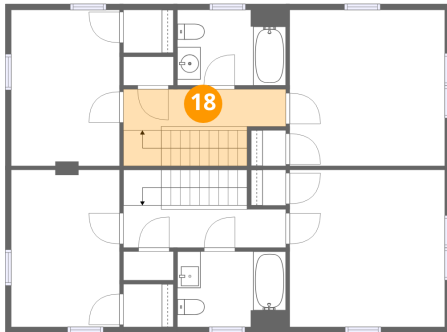


Dimensions: 9'3" x 13'4"  
Area: 124 sq. ft  
Counted as living area: Yes

Heated: Yes  
Finished: Yes  
Enclosed: Yes  
Contiguous: Yes  
Permitted: Yes  
Wet space: No  
Addition: No  
Conversion: No



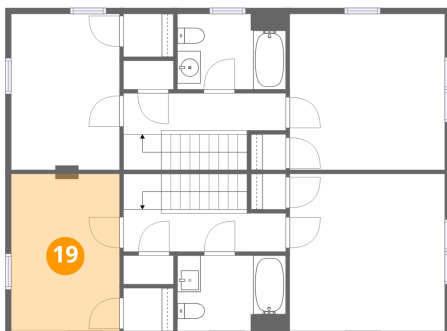
### 18 Floor 3 - Hall



Dimensions: 13'11" x 3'6"  
Area: 80 sq. ft  
Counted as living area: Yes

Heated: Yes  
Finished: Yes  
Enclosed: Yes  
Contiguous: Yes  
Permitted: Yes  
Wet space: No  
Addition: No  
Conversion: No

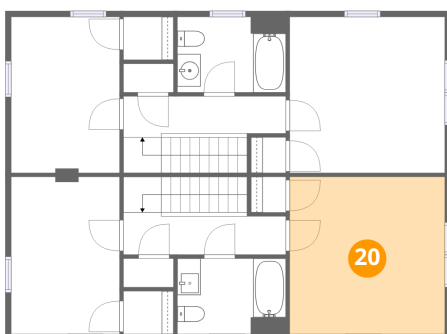
### 19 Floor 3 - Bedroom



Dimensions: 9'3" x 13'5"  
Area: 125 sq. ft  
Counted as living area: Yes

Heated: Yes  
Finished: Yes  
Enclosed: Yes  
Contiguous: Yes  
Permitted: Yes  
Wet space: No  
Addition: No  
Conversion: No

### 20 Floor 3 - Primary Bedroom



Dimensions: 13'3" x 13'5"  
Area: 179 sq. ft  
Counted as living area: Yes

Heated: Yes  
Finished: Yes  
Enclosed: Yes  
Contiguous: Yes  
Permitted: Yes  
Wet space: No  
Addition: No  
Conversion: No