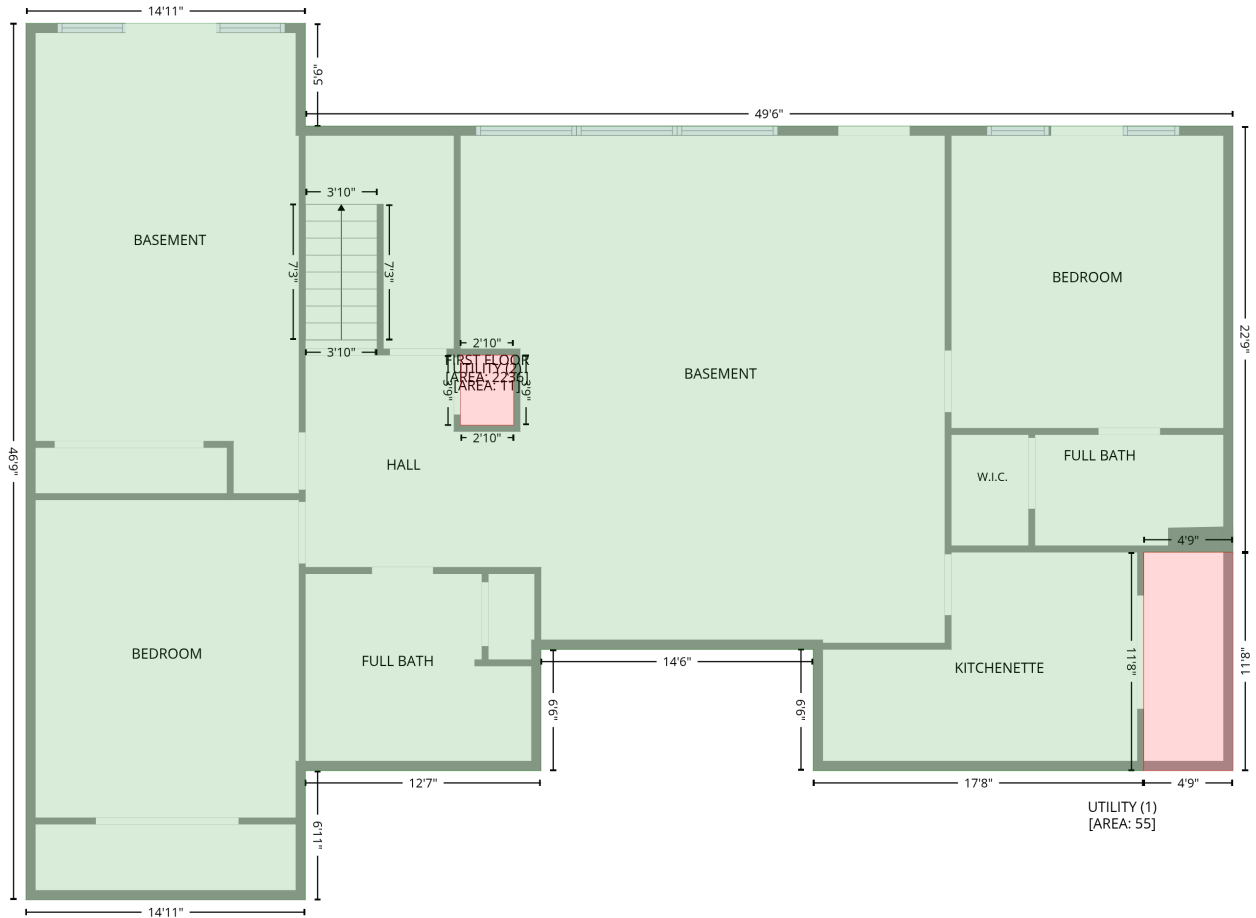


8 The Pointe, Sanford, Lee County, North Carolina, United States, 27332

Gross Living Area: 5180 sq. ft

Level 1



Space	Area (sq. ft)	Calculation <small>Coordinate Polygon Area Algorithm using inches</small>
FIRST FLOOR (Living area)	2236	$-\left((318 + 283.9) * (292.5 - 292.5) + (283.9 + 283.9) * (292.5 - 337.3) + (283.9 + 318) * (337.3 - 337.3) + (318 + 318) * (337.3 - 292.5)\right) * 0.5 * 0.00694 + -\left((509.7 + 335.4) * (480.7 - 480.7) + (335.4 + 335.4) * (480.7 - 558.3) + (335.4 + 184.6) * (558.3 - 558.3) + (184.6 + 184.6) * (558.3 - 640.9) + (184.6 + 5.8) * (640.9 - 640.9) + (5.8 + 5.8) * (640.9 - 80.2) + (5.8 + 184.6) * (80.2 - 80.2) + (184.6 + 184.6) * (80.2 - 146) + (184.6 + 778.3) * (146 - 146) + (778.3 + 778.3) * (146 - 418.5) + (778.3 + 721.3) * (418.5 - 418.5) + (721.3 + 721.3) * (418.5 - 558.3) + (721.3 + 509.7) * (558.3 - 558.3) + (509.7 + 509.7) * (558.3 - 480.7)\right) * 0.5 * 0.00694$
UTILITY (Non-living area)	55	$-\left((778.3 + 778.3) * (418.5 - 558.3) + (778.3 + 721.3) * (558.3 - 558.3) + (721.3 + 721.3) * (558.3 - 418.5) + (721.3 + 778.3) * (418.5 - 418.5)\right) * 0.5 * 0.00694$
UTILITY (Non-living area)	11	$-\left((318 + 318) * (292.5 - 337.3) + (318 + 283.9) * (337.3 - 337.3) + (283.9 + 283.9) * (337.3 - 292.5) + (283.9 + 318) * (292.5 - 292.5)\right) * 0.5 * 0.00694$

8 The Pointe, Sanford, Lee County, North Carolina, United States, 27332

Gross Living Area: 5180 sq. ft

Level 2



8 The Pointe, Sanford, Lee County, North Carolina, United States, 27332

Gross Living Area: 5180 sq. ft

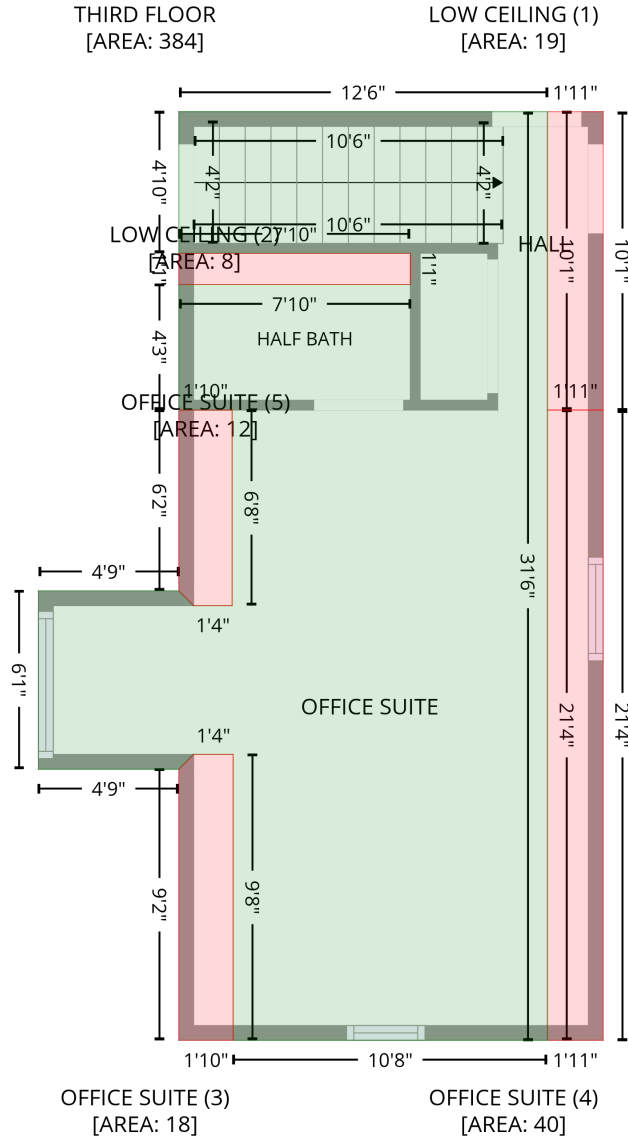
Level 2

Space	Area (sq. ft)	Calculation <small>Coordinate Polygon Area Algorithm using inches</small>
SECOND FLOOR (Living area)	2560	$-\left((491.6 + 335.4) * (480.7 - 480.7) + (335.4 + 335.4) * (480.7 - 558.3) + (335.4 + 184.6) * (558.3 - 558.3) + (184.6 + 184.6) * (558.3 - 640.9) + (184.6 + 5.8) * (640.9 - 640.9) + (5.8 + 5.8) * (640.9 - 80.2) + (5.8 + 184.6) * (80.2 - 80.2) + (184.6 + 184.6) * (80.2 - 146) + (184.6 + 277.9) * (146 - 146) + (277.9 + 277.9) * (146 - 26.3) + (277.9 + 505.9) * (26.3 - 26.3) + (505.9 + 505.9) * (26.3 - 146) + (505.9 + 772.3) * (146 - 146) + (772.3 + 772.3) * (146 - 152) + (772.3 + 778.3) * (152 - 152) + (778.3 + 778.3) * (152 - 370.3) + (778.3 + 789.5) * (370.3 - 395.1) + (789.5 + 789.5) * (395.1 - 424.9) + (789.5 + 778.3) * (424.9 - 449.7) + (778.3 + 778.3) * (449.7 - 558.3) + (778.3 + 644.8) * (558.3 - 558.3) + (644.8 + 644.8) * (558.3 - 609.8) + (644.8 + 491.6) * (609.8 - 609.8) + (491.6 + 491.6) * (609.8 - 480.7)\right) * 0.5 * 0.00694$
GARAGE (Non-living area)	685	$-\left((778.3 + 778.3) * (558.3 - 929.9) + (778.3 + 491.6) * (929.9 - 929.9) + (491.6 + 491.6) * (929.9 - 609.8) + (491.6 + 644.8) * (609.8 - 609.8) + (644.8 + 644.8) * (609.8 - 558.3) + (644.8 + 778.3) * (558.3 - 558.3)\right) * 0.5 * 0.00694$
BALCONY (Non-living area)	214	$-\left((772.3 + 772.3) * (30.3 - 146) + (772.3 + 505.9) * (146 - 146) + (505.9 + 505.9) * (146 - 30.3) + (505.9 + 772.3) * (30.3 - 30.3)\right) * 0.5 * 0.00694$
BALCONY (Non-living area)	134	$-\left((277.9 + 277.9) * (31.2 - 146) + (277.9 + 184.6) * (146 - 146) + (184.6 + 184.6) * (146 - 80.2) + (184.6 + 9.8) * (80.2 - 80.2) + (9.8 + 9.8) * (80.2 - 31.2) + (9.8 + 277.9) * (31.2 - 31.2)\right) * 0.5 * 0.00694$

8 The Pointe, Sanford, Lee County, North Carolina, United States, 27332

Gross Living Area: 5180 sq. ft

Level 3



Space	Area (sq. ft)	Calculation
THIRD FLOOR (Living area)	384	Coordinate Polygon Area Algorithm using inches $-((698.6 + 698.6) * (552.3 - 929.9) + (698.6 + 570.8) * (929.9 - 929.9) + (570.8 + 570.8) * (929.9 - 813.7) + (570.8 + 554.7) * (813.7 - 813.7) + (554.7 + 548.7) * (813.7 - 819.7) + (548.7 + 491.6) * (819.7 - 819.7) + (491.6 + 491.6) * (819.7 - 747.2) + (491.6 + 548.7) * (747.2 - 747.2) + (548.7 + 554.7) * (747.2 - 753.2) + (554.7 + 570.4) * (753.2 - 753.2) + (570.4 + 570.4) * (753.2 - 673.6) + (570.4 + 548.7) * (673.6 - 673.6) + (548.7 + 548.7) * (673.6 - 622.6) + (548.7 + 642.9) * (622.6 - 622.6) + (642.9 + 642.9) * (622.6 - 609.8) + (642.9 + 548.7) * (609.8 - 609.8) + (548.7 + 548.7) * (609.8 - 552.3) + (548.7 + 698.6) * (552.3 - 552.3)) * 0.5 * 0.00694$

8 The Pointe, Sanford, Lee County, North Carolina, United States, 27332

Gross Living Area: 5180 sq. ft

Level 3

Space	Area (sq. ft)	Calculation <small>Coordinate Polygon Area Algorithm using inches</small>
LOW CEILING (Non-living area)	19	$-((721.3 + 721.3) * (552.3 - 673.6) + (721.3 + 698.6) * (673.6 - 673.6) + (698.6 + 698.6) * (673.6 - 552.3) + (698.6 + 721.3) * (552.3 - 552.3)) * 0.5 * 0.00694$
LOW CEILING (Non-living area)	8	$-((642.9 + 642.9) * (609.8 - 622.6) + (642.9 + 548.7) * (622.6 - 622.6) + (548.7 + 548.7) * (622.6 - 609.8) + (548.7 + 642.9) * (609.8 - 609.8)) * 0.5 * 0.00694$
OFFICE SUITE (Non-living area)	18	$-((570.8 + 570.8) * (813.7 - 929.9) + (570.8 + 548.7) * (929.9 - 929.9) + (548.7 + 548.7) * (929.9 - 819.7) + (548.7 + 554.7) * (819.7 - 813.7) + (554.7 + 570.8) * (813.7 - 813.7)) * 0.5 * 0.00694$
OFFICE SUITE (Non-living area)	40	$-((721.3 + 721.3) * (673.6 - 929.9) + (721.3 + 698.6) * (929.9 - 929.9) + (698.6 + 698.6) * (929.9 - 673.6) + (698.6 + 721.3) * (673.6 - 673.6)) * 0.5 * 0.00694$
OFFICE SUITE (Non-living area)	12	$-((570.4 + 570.4) * (673.6 - 753.2) + (570.4 + 554.7) * (753.2 - 753.2) + (554.7 + 548.7) * (753.2 - 747.2) + (548.7 + 548.7) * (747.2 - 673.6) + (548.7 + 570.4) * (673.6 - 673.6)) * 0.5 * 0.00694$