



51 Meadowbrook Place

South Orange, NJ



3



1.1

www.51meadowbrookplace.com



VICTORIA
CARTER
GROUP



Warm and Inviting

Situated on a corner property directly across the street from 45-acre Meadowland Park, this charming, eight-room colonial – with three bedrooms, 1.1 baths, a finished lower level and sweeping rear deck – promises the very best in contemporary suburban living.

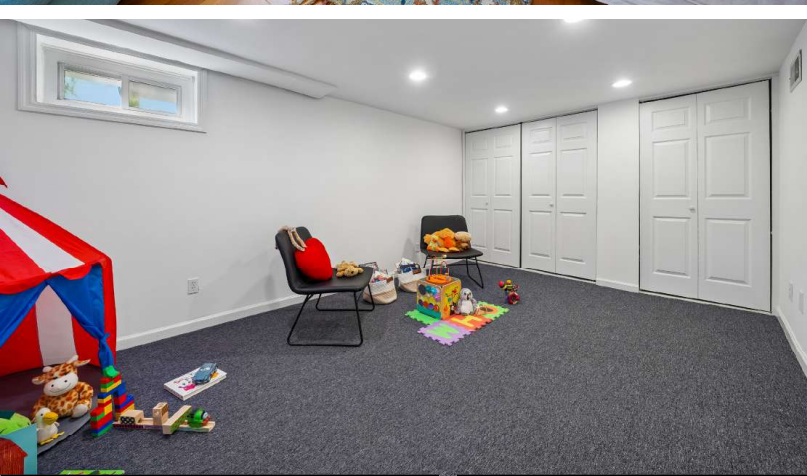
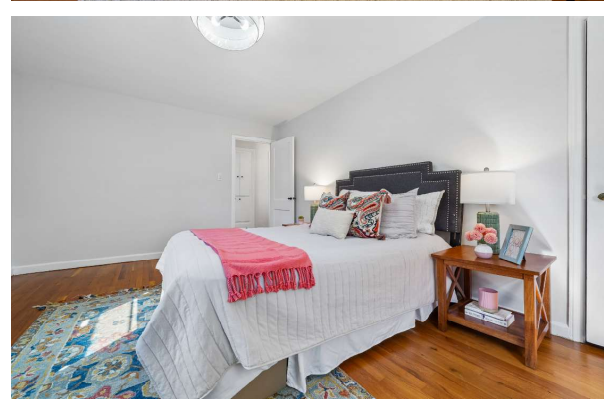
An entry vestibule, with tile floor and coat closet, welcomes visitors to this fine home. Ahead, the formal living room presents a hardwood floor and wood-burning fireplace with tile hearth and traditional wooden mantel. A pair of windows overlooking the front lawn combine with two additional windows in the side wall to provide soft, ambient light throughout the day. Open doorways lead to the dining room, den and kitchen. The dining room offers a hardwood floor, chair rail, overhead light fixture and three large windows with front and side exposure. An open doorway leads to the kitchen. The kitchen features paneled cabinets with maintenance-free quartz counter tops and a tile backsplash. Appliances include a five-burner gas range, dishwasher and refrigerator with cafe doors and water and ice dispenser. Walk-out access to the sweeping deck and Jacuzzi hot tub makes outdoor entertaining a convenient pleasure. A tile floor, recessed lighting and undermounted stainless steel sink with disposal provide all the right finishing touches. Equally well suited for use as a sunny escape or quiet space for work-from-home, the den presents wall-to-wall carpeting, a vaulted ceiling, overhead light fixture and windows in two walls. Located off the kitchen, the powder room is equipped with a tile floor, pedestal sink, medicine cabinet and overhead light fixture.

Situated on the second level, the primary bedroom includes a hardwood floor, closet and overhead light fixture. Windows on two walls provide comfortable cross breezes. Each of the two additional bedrooms features a hardwood floor, lighted ceiling fan, windows on multiple walls and a closet (one, a double). The full hall bath is equipped with a tile floor and half-wall, glass-enclosed shower-over-tub, vanity, medicine cabinet and two wall sconces. A center foyer, with hardwood floor, closet, built-in linen storage and overhead light fixture, completes the second level. Bessler stairs provide access to attic storage.

Ideal for use as an office, gym or media room, the lower level recreation room offers wall-to-wall carpeting, recessed lighting and an entire wall of closets. A spacious laundry/storage room, with washer, dryer and utility sink, is a welcome convenience.







Highlight

GENERAL

- Warm and inviting, eight-room, Colonial in a thriving residential community
- Three bedrooms
- One full bath; one half-bath
- Modern kitchen with maintenance-free quartz counter tops
- Neutral palette throughout
- Finished lower level
- Large rear deck
- Hot tub
- One-car garage
- Deep and level corner property
- Across the street from 45-acre Meadowland Park
- Minutes from town, schools, restaurants, shopping and Midtown Direct commuter train service into Manhattan

FIRST LEVEL

- Entry vestibule: tile floor; coat closet; overhead light fixture; door to foyer
- Living room: hardwood floor; wood-burning fireplace with tile hearth and traditional wooden mantel; two casement windows, front; two double-hung windows, side; open doorways to dining room, den and kitchen; hardwood stairs to second level
- Den: wall-to-wall carpet; overhead light fixture; vaulted ceiling; two double-hung windows, sides; open doorway to living room
- Dining room: hardwood floor; chair rail; overhead light fixture; two casement windows, front; double-hung window, side; open doorways to kitchen and living room
- Kitchen: tile floor; recessed panel cabinets; quartz counter tops; tile backsplash; five-burner gas range; dishwasher; refrigerator with cafe doors and water and ice dispenser; undermounted stainless steel sink with disposal; recessed lighting; double-hung window, rear; open doorways to dining room and living room; doors to powder room and stairs to lower level; egress to rear deck
- Powder room: tile floor; pedestal sink; medicine cabinet; overhead light fixture

SECOND LEVEL

- Center foyer; hardwood floor; built-in linen storage; closet; overhead light fixture; Bessler stairs to attic storage
- Primary bedroom: hardwood closet; overhead light fixture; double-hung window, front; double-hung window, side
- Bedroom two: hardwood floor; walk-in closet; lighted ceiling fan; double-hung window, front; double-hung window, side
- Bedroom three: hardwood floor; closet; lighted ceiling fan; double-hung window, side; double-hung window, rear
- Full hall bath: tile floor and half-wall; glass-enclosed shower-over-tub with tile surround; vanity; medicine cabinet; built in storage cabinets; two wall sconces; double-hung window, rear

LOWER LEVEL

- Recreation room: wall-to-wall

carpet; recessed lighting; wall of closets with multiple double doors

- Laundry/storage room: washer; dryer; utility sink; walk-in closet; additional closet; overhead fluorescent lighting

EXTERIOR

- Vinyl siding
- Rear deck: access to kitchen
- Hot tub
- One-car garage
- Asphalt driveway
- Deep and level corner property
- Established lawns; mature shade trees; decorative shrubbery

IMPROVEMENTS

- Freshly painted interior throughout – 2026
- Installed new carpeting in den – 2026
- Installed new carpeting in recreation room and stairs to lower level – 2026
- Refreshed kitchen; counter tops, sink and faucet – 2026
- Installed new garage door opener – 2026

2025 ASSESSMENTS/TAXES

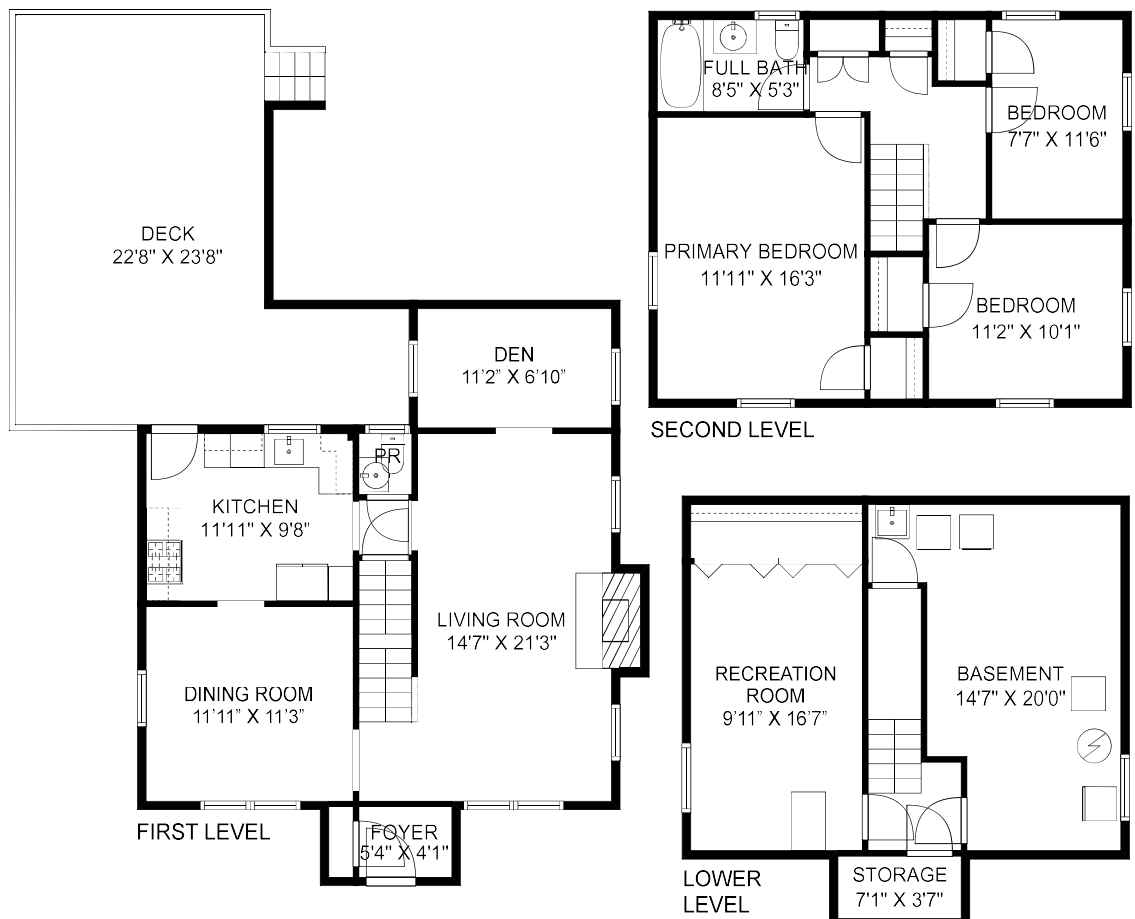
- Land: \$344,000
- Improvements: \$295,900
- Total: \$639,900
- 2025 taxes: \$16,535

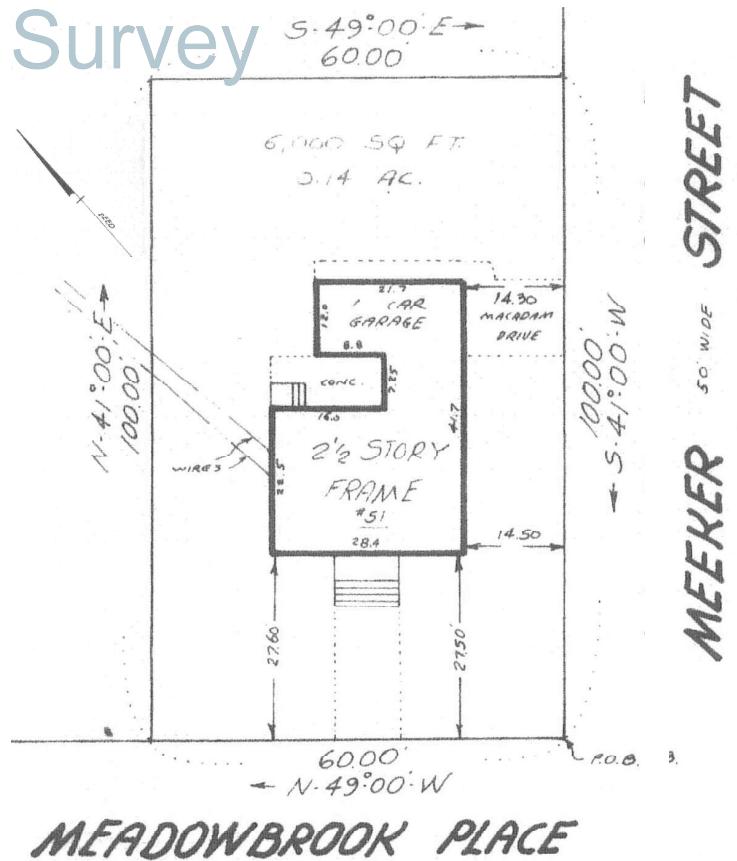
COMMUNITY

• This home is located just minutes away from the South Orange train station and directly across the street from Meadowland Park with tennis courts, three swimming pools, handball and basketball courts, baseball fields, a community center and bike paths. In the summer, the park hosts weekly live concerts and family movie nights. Home to Seton Hall University and the South Orange Performing Arts Center, South Orange is a thriving and diverse community – with a vibrant business center including custom boutiques, galleries and gourmet restaurants – and all just 20 minutes from Newark's Liberty International Airport and close to major highways.

Floor Plan

NOT TO SCALE: Floor plans are for illustration purposes only. Room positions and dimensions are approximate and should be independently measured for accuracy.





Victoria Carter
Broker/Sales Associate

Cell: 973-220-3050
Email: Victoria@VictoriaCarter.com
www.victoriacarter.com

Weichert, Realtors • Short Hills Office



Weichert