

Home data report

924 River Road, Youngstown, Niagara County, New York, United States, 14174



Total Area: 2291 sq. ft

1st Floor: 456 sq. ft, 2nd Floor: 1512 sq. ft, 3rd Floor: 323 sq. ft

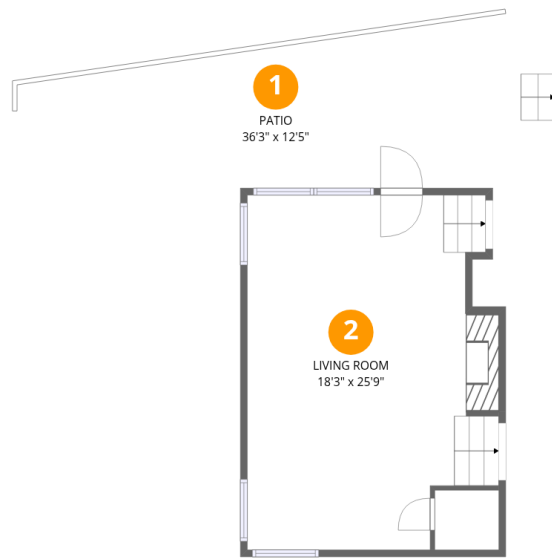
Excluded: Patio 407 sq. ft, Storage 122 sq. ft, Garage 357 sq. ft, Utility 27 sq. ft, Porch 114 sq. ft, Fireplace 10 sq. ft, Walls: 234 sq. ft

Property summary



Home data report

924 River Road, Youngstown, Niagara County, New York, United States, 14174



Room dimensions

Floor 1

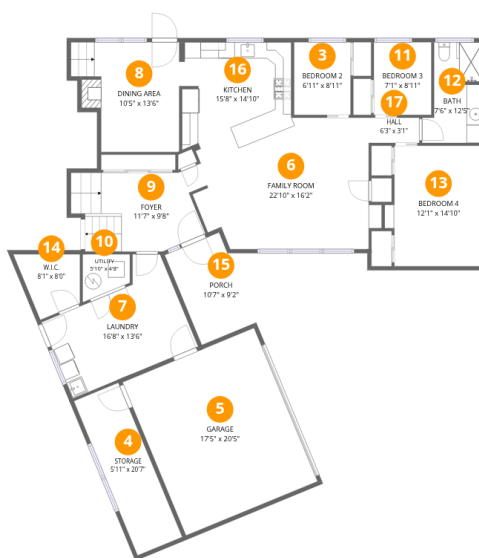
Total:456sqft

Excluded: 407sqft

#		Dimensions	sqft	Counted as living area
1	Patio	36'3" x 12'5"	407 sq. ft	No
2	Living Room	18'3" x 25'9"	432 sq. ft	Yes

Home data report

924 River Road, Youngstown, Niagara County, New York, United States, 14174



Room dimensions

Floor 2

Total:1512sqft Excluded: 620sqft

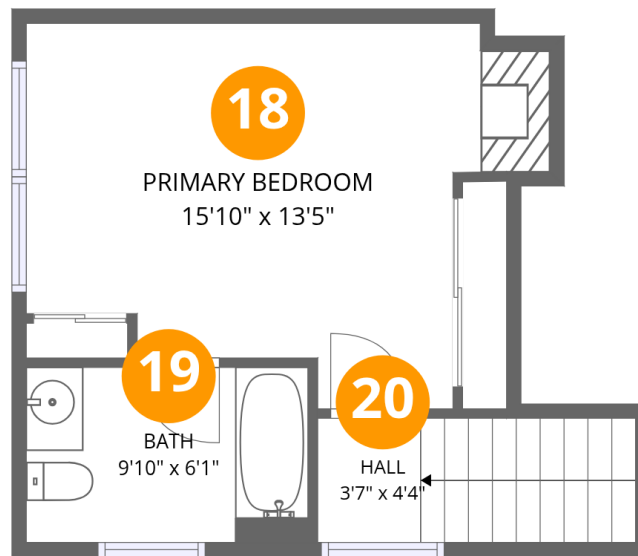
#		Dimensions	sqft	Counted as living area
3	Bedroom 2	6'11" x 8'11"	62 sq. ft	Yes
4	Storage	5'11" x 20'7"	122 sq. ft	No
5	Garage	17'5" x 20'5"	357 sq. ft	No
6	Family Room	22'10" x 16'2"	294 sq. ft	Yes
7	Laundry	16'8" x 13'6"	180 sq. ft	Yes
8	Dining Area	10'5" x 13'6"	154 sq. ft	Yes
9	Foyer	11'7" x 9'8"	137 sq. ft	Yes
10	Utility	5'10" x 4'8"	27 sq. ft	No
11	Bedroom 3	7'1" x 8'11"	63 sq. ft	Yes
12	Bath	7'6" x 12'5"	78 sq. ft	Yes
13	Bedroom 4	12'1" x 14'10"	165 sq. ft	Yes

Home data report

924 River Road, Youngstown, Niagara County, New York, United States, 14174

#		Dimensions	sqft	Counted as living area
14	W.I.C.	8'1" x 8'0"	48 sq. ft	Yes
15	Porch	10'7" x 9'2"	114 sq. ft	No
16	Kitchen	15'8" x 14'10"	171 sq. ft	Yes
17	Hall	6'3" x 3'1"	19 sq. ft	Yes

924 River Road, Youngstown, Niagara County, New York, United States, 14174



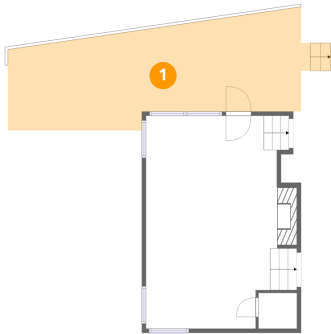
Room dimensions

Floor 3

Total:323sqft Excluded: 10sqft

#		Dimensions	sqft	Counted as living area
18	Primary Bedroom	15'10" x 13'5"	191 sq. ft	Yes
19	Bath	9'10" x 6'1"	60 sq. ft	Yes
20	Hall	3'7" x 4'4"	48 sq. ft	Yes

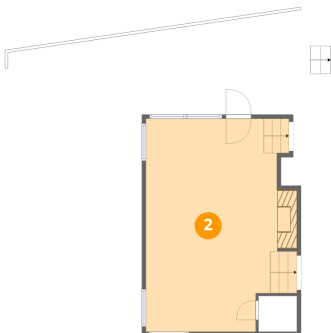
1 Floor 1 - Patio



Dimensions: 36'3" x 12'5"
Area: 407 sq. ft
Counted as living area: No

Heated: No
Finished: No
Enclosed: No
Contiguous: Yes
Permitted: Yes
Wet space: No
Addition: No
Conversion: No

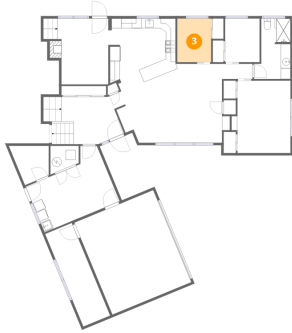
2 Floor 1 - Living Room



Dimensions: 18'3" x 25'9"
Area: 432 sq. ft
Counted as living area: Yes

Heated: Yes
Finished: Yes
Enclosed: Yes
Contiguous: Yes
Permitted: Yes
Wet space: No
Addition: No
Conversion: No

3 Floor 2 - Bedroom 2



Dimensions: 6'11" x 8'11"
Area: 62 sq. ft
Counted as living area: Yes

Heated: Yes
Finished: Yes
Enclosed: Yes
Contiguous: Yes
Permitted: Yes
Wet space: No
Addition: No
Conversion: No

4 Floor 2 - Storage



Dimensions: 5'11" x 20'7"
Area: 122 sq. ft
Counted as living area: No

Heated: No
Finished: No
Enclosed: No
Contiguous: Yes
Permitted: Yes
Wet space: No
Addition: No
Conversion: No

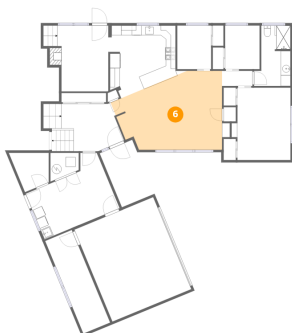
5 Floor 2 - Garage



Dimensions: 17'5" x 20'5"
Area: 357 sq. ft
Counted as living area: No

Heated: No
Finished: No
Enclosed: Yes
Contiguous: Yes
Permitted: Yes
Wet space: No
Addition: No
Conversion: No

6 Floor 2 - Family Room



Dimensions: 22'10" x 16'2"
Area: 294 sq. ft
Counted as living area: Yes

Heated: Yes
Finished: Yes
Enclosed: Yes
Contiguous: Yes
Permitted: Yes
Wet space: No
Addition: No
Conversion: No

7 Floor 2 - Laundry



Dimensions: 16'8" x 13'6"
Area: 180 sq. ft
Counted as living area: Yes

Heated: Yes
Finished: Yes
Enclosed: Yes
Contiguous: Yes
Permitted: Yes
Wet space: No
Addition: No
Conversion: No

8 Floor 2 - Dining Area



Dimensions: 10'5" x 13'6"
Area: 154 sq. ft
Counted as living area: Yes

Heated: Yes
Finished: Yes
Enclosed: Yes
Contiguous: Yes
Permitted: Yes
Wet space: No
Addition: No
Conversion: No

9 Floor 2 - Foyer



Dimensions: 11'7" x 9'8"
Area: 137 sq. ft
Counted as living area: Yes

Heated: Yes
Finished: Yes
Enclosed: Yes
Contiguous: Yes
Permitted: Yes
Wet space: No
Addition: No
Conversion: No

10 Floor 2 - Utility



Dimensions: 5'10" x 4'8"
Area: 27 sq. ft
Counted as living area: No

Heated: Yes
Finished: No
Enclosed: Yes
Contiguous: Yes
Permitted: Yes
Wet space: No
Addition: No
Conversion: No

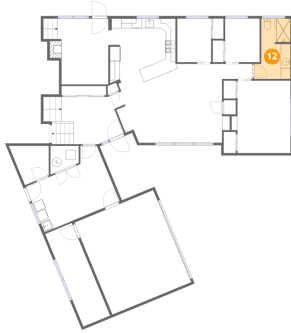
11 Floor 2 - Bedroom 3



Dimensions: 7'1" x 8'11"
Area: 63 sq. ft
Counted as living area: Yes

Heated: Yes
Finished: Yes
Enclosed: Yes
Contiguous: Yes
Permitted: Yes
Wet space: No
Addition: No
Conversion: No

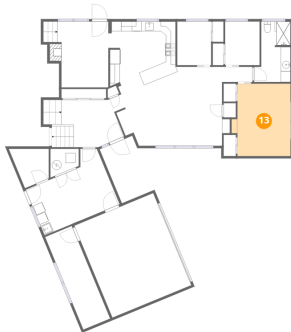
12 Floor 2 - Bath



Dimensions: 7'6" x 12'5"
Area: 78 sq. ft
Counted as living area: Yes

Heated: Yes
Finished: Yes
Enclosed: Yes
Contiguous: Yes
Permitted: Yes
Wet space: Yes
Addition: No
Conversion: No

13 Floor 2 - Bedroom 4



Dimensions: 12'1" x 14'10"
Area: 165 sq. ft
Counted as living area: Yes

Heated: Yes
Finished: Yes
Enclosed: Yes
Contiguous: Yes
Permitted: Yes
Wet space: No
Addition: No
Conversion: No

14 Floor 2 - W.I.C.



Dimensions: 8'1" x 8'0"
Area: 48 sq. ft
Counted as living area: Yes

Heated: Yes
Finished: Yes
Enclosed: Yes
Contiguous: Yes
Permitted: Yes
Wet space: No
Addition: No
Conversion: No

15 Floor 2 - Porch



Dimensions: 10'7" x 9'2"
Area: 114 sq. ft
Counted as living area: No

Heated: No
Finished: No
Enclosed: No
Contiguous: Yes
Permitted: Yes
Wet space: No
Addition: No
Conversion: No

16 Floor 2 - Kitchen



Dimensions: 15'8" x 14'10"
Area: 171 sq. ft
Counted as living area: Yes

Heated: Yes
Finished: Yes
Enclosed: Yes
Contiguous: Yes
Permitted: Yes
Wet space: No
Addition: No
Conversion: No

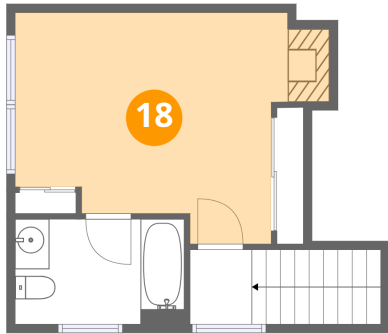
17 Floor 2 - Hall



Dimensions: 6'3" x 3'1"
Area: 19 sq. ft
Counted as living area: Yes

Heated: Yes
Finished: Yes
Enclosed: Yes
Contiguous: Yes
Permitted: Yes
Wet space: No
Addition: No
Conversion: No

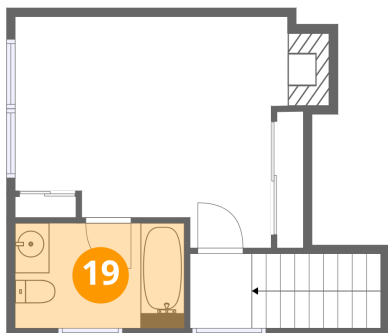
18 Floor 3 - Primary Bedroom



Dimensions: 15'10" x 13'5"
Area: 191 sq. ft
Counted as living area: Yes

Heated: Yes
Finished: Yes
Enclosed: Yes
Contiguous: Yes
Permitted: Yes
Wet space: No
Addition: No
Conversion: No

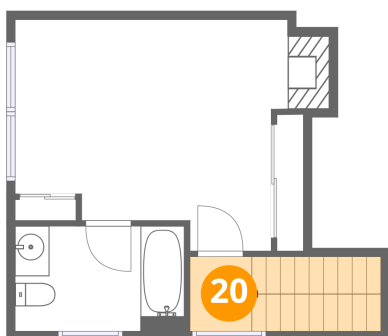
19 Floor 3 - Bath



Dimensions: 9'10" x 6'1"
Area: 60 sq. ft
Counted as living area: Yes

Heated: Yes
Finished: Yes
Enclosed: Yes
Contiguous: Yes
Permitted: Yes
Wet space: Yes
Addition: No
Conversion: No

20 Floor 3 - Hall



Dimensions: 3'7" x 4'4"
Area: 48 sq. ft
Counted as living area: Yes

Heated: Yes
Finished: Yes
Enclosed: Yes
Contiguous: Yes
Permitted: Yes
Wet space: No
Addition: No
Conversion: No