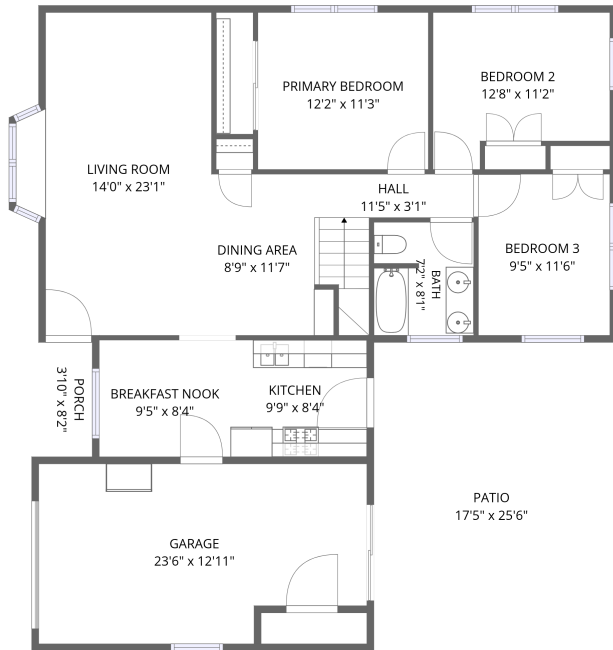
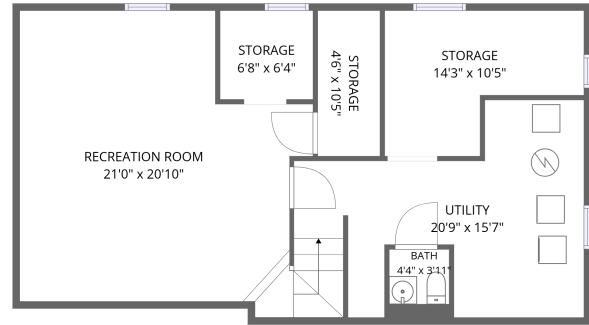


Home data report

12 Sylvia Drive, Depew, Erie County, New York, United States, 14043



1st floor



Basement

Total Area: 1565 sq. ft

Basement: 434 sq. ft, 1st Floor: 1131 sq. ft

Excluded: Storage 218 sq. ft, Utility 216 sq. ft, Garage 281 sq. ft, Patio 396 sq. ft, Porch 31 sq. ft, Walls: 169 sq. ft

Property summary



Home data report

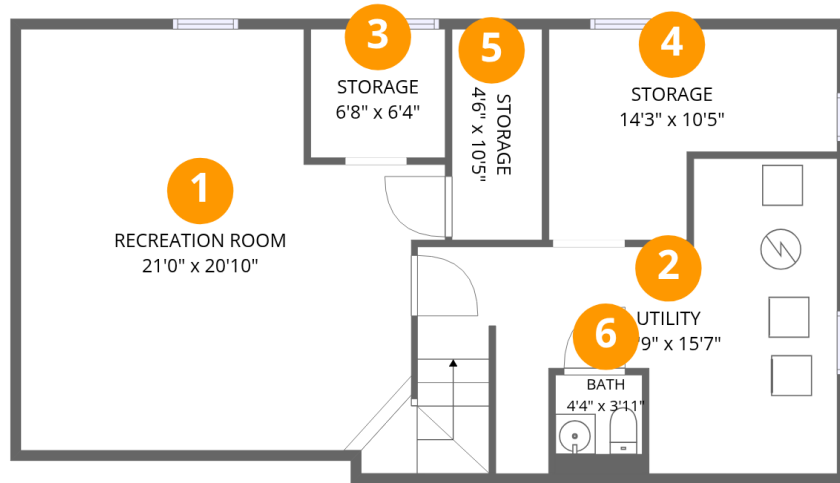
**12 Sylvia Drive, Depew, Erie County, New York, United States,
14043**

 **1**
Half baths

 **1**
Garages

Home data report

12 Sylvia Drive, Depew, Erie County, New York, United States, 14043



Room dimensions

Floor 1 Below grade

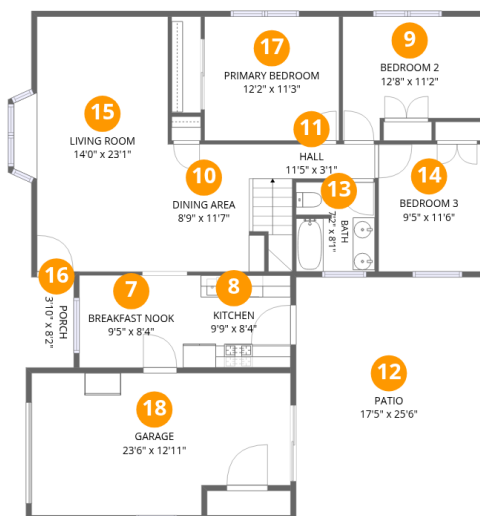
Total:434sqft

Excluded: 434sqft

#		Dimensions	sqft	Counted as living area
1	Recreation Room	21'0" x 20'10"	397 sq. ft	Yes
2	Utility	20'9" x 15'7"	215 sq. ft	No
3	Storage	6'8" x 6'4"	42 sq. ft	No
4	Storage	14'3" x 10'5"	116 sq. ft	No
5	Storage	4'6" x 10'5"	47 sq. ft	No
6	Bath	4'4" x 3'11"	21 sq. ft	Yes

Home data report

12 Sylvia Drive, Depew, Erie County, New York, United States, 14043



Room dimensions

Floor 2

Total:1131sqft Excluded: 708sqft

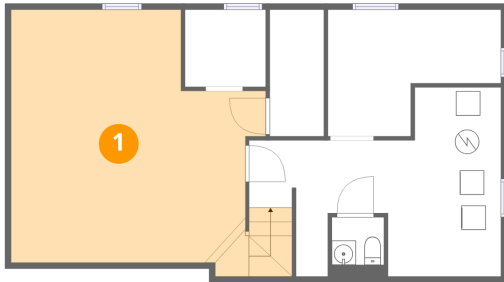
#		Dimensions	sqft	Counted as living area
7	Breakfast Nook	9'5" x 8'4"	79 sq. ft	Yes
8	Kitchen	9'9" x 8'4"	81 sq. ft	Yes
9	Bedroom 2	12'8" x 11'2"	123 sq. ft	Yes
10	Dining Area	8'9" x 11'7"	90 sq. ft	Yes
11	Hall	11'5" x 3'1"	62 sq. ft	Yes
12	Patio	17'5" x 25'6"	396 sq. ft	No
13	Bath	7'2" x 8'1"	57 sq. ft	Yes
14	Bedroom 3	9'5" x 11'6"	109 sq. ft	Yes
15	Living Room	14'0" x 23'1"	289 sq. ft	Yes
16	Porch	3'10" x 8'2"	31 sq. ft	No
17	Primary Bedroom	12'2" x 11'3"	137 sq. ft	Yes

Home data report

**12 Sylvia Drive, Depew, Erie County, New York, United States,
14043**

#		Dimensions	sqft	Counted as living area
18	Garage	23'6" x 12'11"	281 sq. ft	No

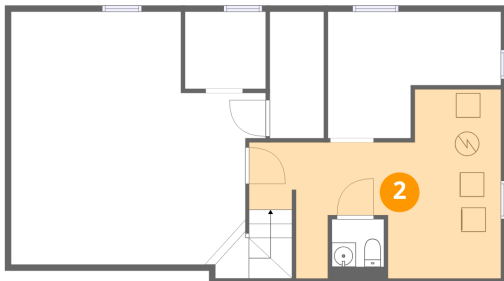
1 Floor 1 - Recreation Room



Dimensions: 21'0" x 20'10"
Area: 397 sq. ft
Counted as living area: Yes

Heated: Yes
Finished: Yes
Enclosed: Yes
Contiguous: Yes
Permitted: Yes
Wet space: No
Addition: No
Conversion: No

2 Floor 1 - Utility



Dimensions: 20'9" x 15'7"
Area: 215 sq. ft
Counted as living area: No

Heated: No
Finished: No
Enclosed: Yes
Contiguous: Yes
Permitted: Yes
Wet space: No
Addition: No
Conversion: No

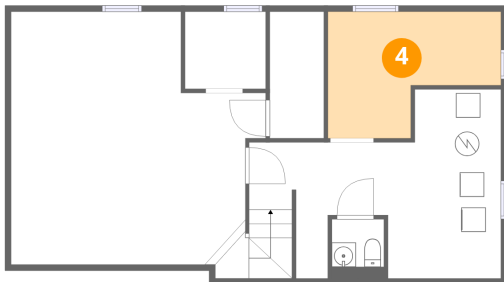
3 Floor 1 - Storage



Dimensions: 6'8" x 6'4"
Area: 42 sq. ft
Counted as living area: No

Heated: No
Finished: No
Enclosed: No
Contiguous: Yes
Permitted: Yes
Wet space: No
Addition: No
Conversion: No

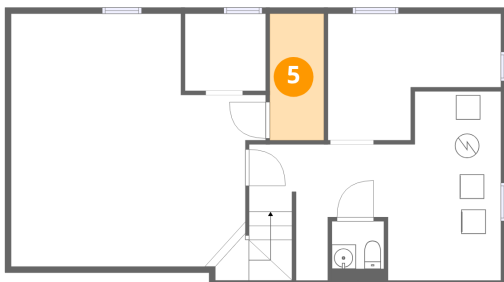
4 Floor 1 - Storage



Dimensions: 14'3" x 10'5"
Area: 116 sq. ft
Counted as living area: No

Heated: No
Finished: No
Enclosed: No
Contiguous: Yes
Permitted: Yes
Wet space: No
Addition: No
Conversion: No

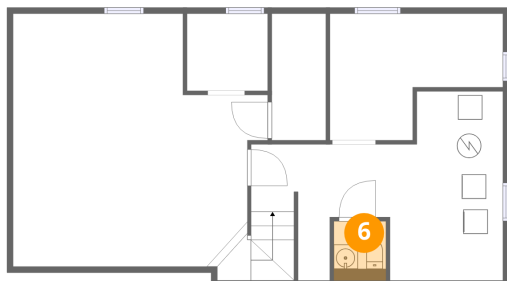
5 Floor 1 - Storage



Dimensions: 4'6" x 10'5"
Area: 47 sq. ft
Counted as living area: No

Heated: No
Finished: No
Enclosed: No
Contiguous: Yes
Permitted: Yes
Wet space: No
Addition: No
Conversion: No

6 Floor 1 - Bath



Dimensions: 4'4" x 3'11"
Area: 21 sq. ft
Counted as living area: No

Heated: Yes
Finished: Yes
Enclosed: Yes
Contiguous: No
Permitted: Yes
Wet space: Yes
Addition: No
Conversion: No

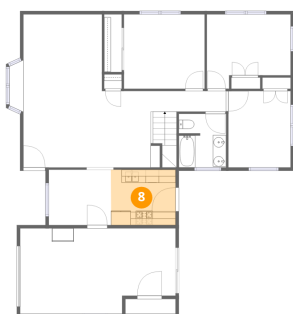
7 Floor 2 - Breakfast Nook



Dimensions: 9'5" x 8'4"
Area: 79 sq. ft
Counted as living area: Yes

Heated: Yes
Finished: Yes
Enclosed: Yes
Contiguous: Yes
Permitted: Yes
Wet space: No
Addition: No
Conversion: No

8 Floor 2 - Kitchen



Dimensions: 9'9" x 8'4"
Area: 81 sq. ft
Counted as living area: Yes

Heated: Yes
Finished: Yes
Enclosed: Yes
Contiguous: Yes
Permitted: Yes
Wet space: No
Addition: No
Conversion: No

12 Sylvia Drive, Depew, Erie County, New York, United States, 14043

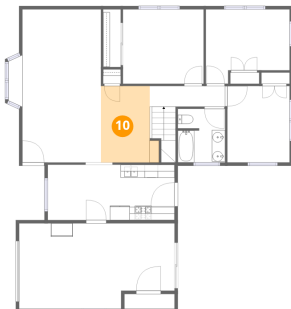
9 Floor 2 - Bedroom 2



Dimensions: 12'8" x 11'2"
Area: 123 sq. ft
Counted as living area: Yes

Heated: Yes
Finished: Yes
Enclosed: Yes
Contiguous: Yes
Permitted: Yes
Wet space: No
Addition: No
Conversion: No

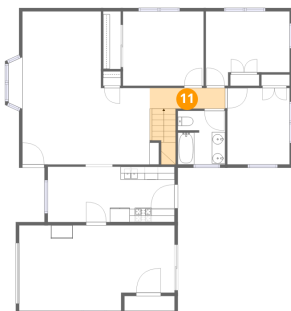
10 Floor 2 - Dining Area



Dimensions: 8'9" x 11'7"
Area: 90 sq. ft
Counted as living area: Yes

Heated: Yes
Finished: Yes
Enclosed: Yes
Contiguous: Yes
Permitted: Yes
Wet space: No
Addition: No
Conversion: No

11 Floor 2 - Hall



Dimensions: 11'5" x 3'1"
Area: 62 sq. ft
Counted as living area: Yes

Heated: Yes
Finished: Yes
Enclosed: Yes
Contiguous: Yes
Permitted: Yes
Wet space: No
Addition: No
Conversion: No

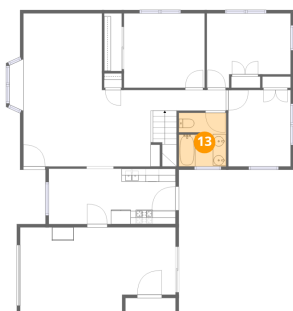
12 Floor 2 - Patio



Dimensions: 17'5" x 25'6"
Area: 396 sq. ft
Counted as living area: No

Heated: No
Finished: No
Enclosed: No
Contiguous: Yes
Permitted: Yes
Wet space: No
Addition: No
Conversion: No

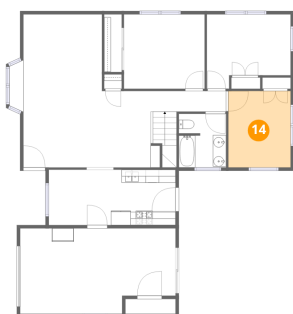
13 Floor 2 - Bath



Dimensions: 7'2" x 8'1"
Area: 57 sq. ft
Counted as living area: Yes

Heated: Yes
Finished: Yes
Enclosed: Yes
Contiguous: Yes
Permitted: Yes
Wet space: Yes
Addition: No
Conversion: No

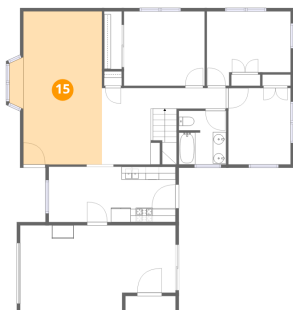
14 Floor 2 - Bedroom 3



Dimensions: 9'5" x 11'6"
Area: 109 sq. ft
Counted as living area: Yes

Heated: Yes
Finished: Yes
Enclosed: Yes
Contiguous: Yes
Permitted: Yes
Wet space: No
Addition: No
Conversion: No

15 Floor 2 - Living Room



Dimensions: 14'0" x 23'1"
Area: 289 sq. ft
Counted as living area: Yes

Heated: Yes
Finished: Yes
Enclosed: Yes
Contiguous: Yes
Permitted: Yes
Wet space: No
Addition: No
Conversion: No

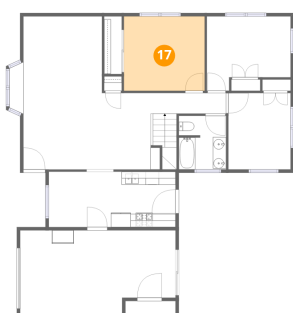
16 Floor 2 - Porch



Dimensions: 3'10" x 8'2"
Area: 31 sq. ft
Counted as living area: No

Heated: No
Finished: No
Enclosed: No
Contiguous: Yes
Permitted: Yes
Wet space: No
Addition: No
Conversion: No

17 Floor 2 - Primary Bedroom



Dimensions: 12'2" x 11'3"
Area: 137 sq. ft
Counted as living area: Yes

Heated: Yes
Finished: Yes
Enclosed: Yes
Contiguous: Yes
Permitted: Yes
Wet space: No
Addition: No
Conversion: No

Home data report

12 Sylvia Drive, Depew, Erie County, New York, United States,
14043

18 Floor 2 - Garage



Dimensions: 23'6" x 12'11"
Area: 281 sq. ft
Counted as living area: No

Heated: No
Finished: No
Enclosed: Yes
Contiguous: Yes
Permitted: Yes
Wet space: No
Addition: No
Conversion: No