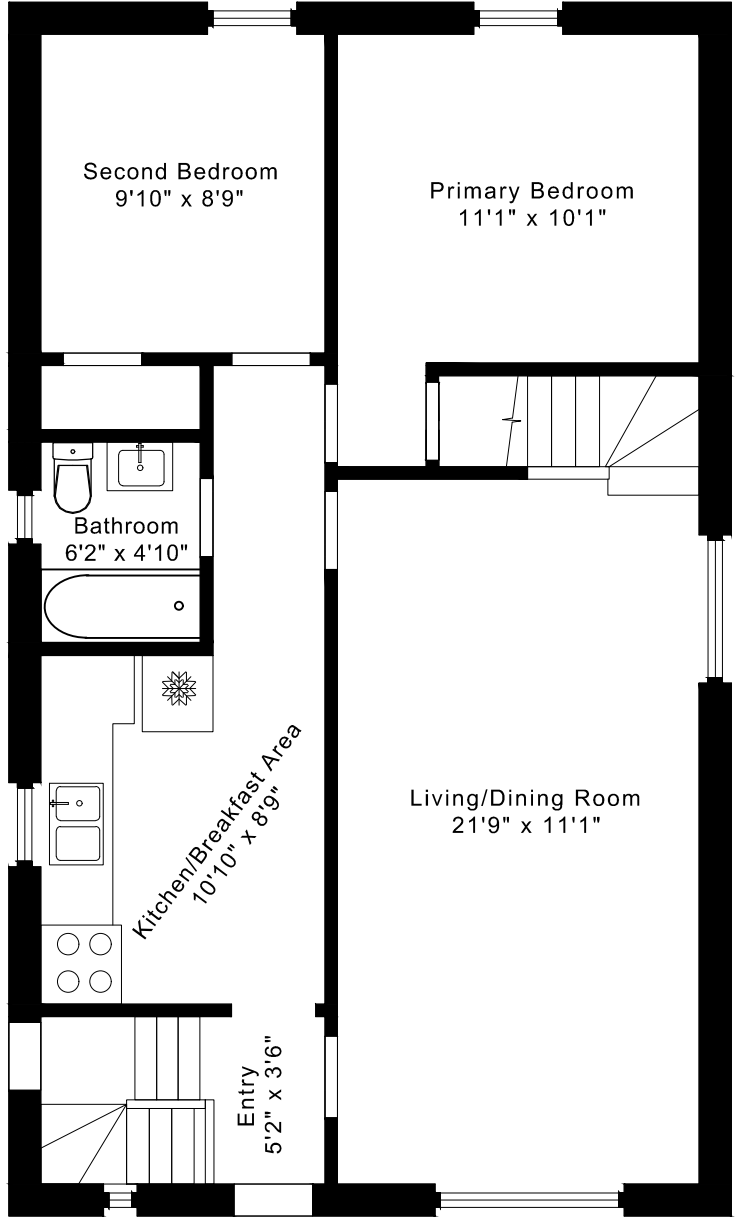
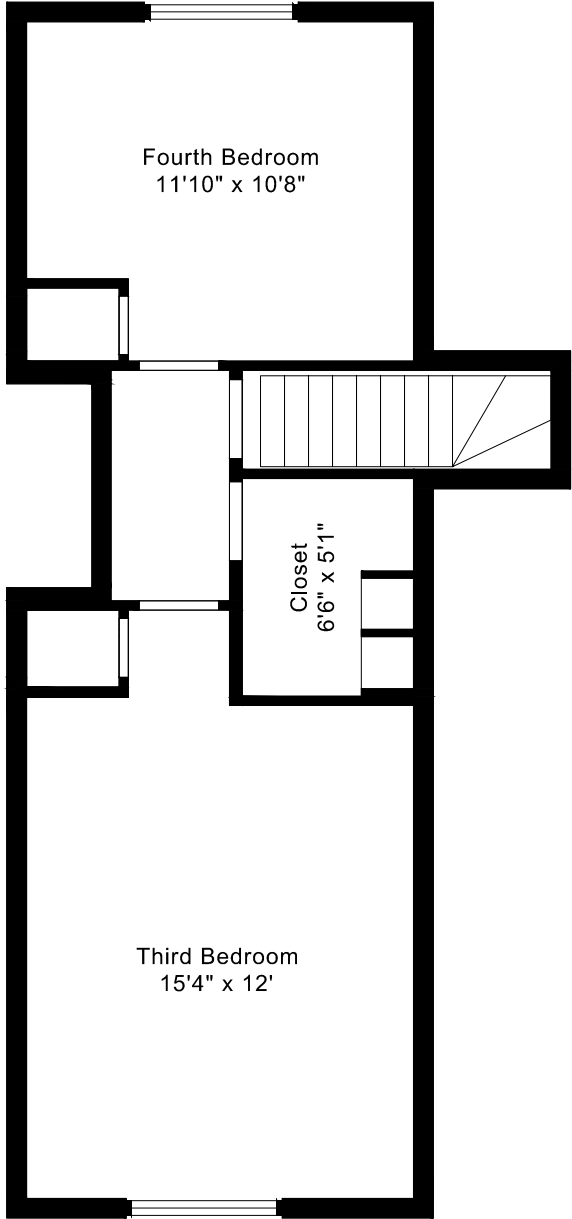


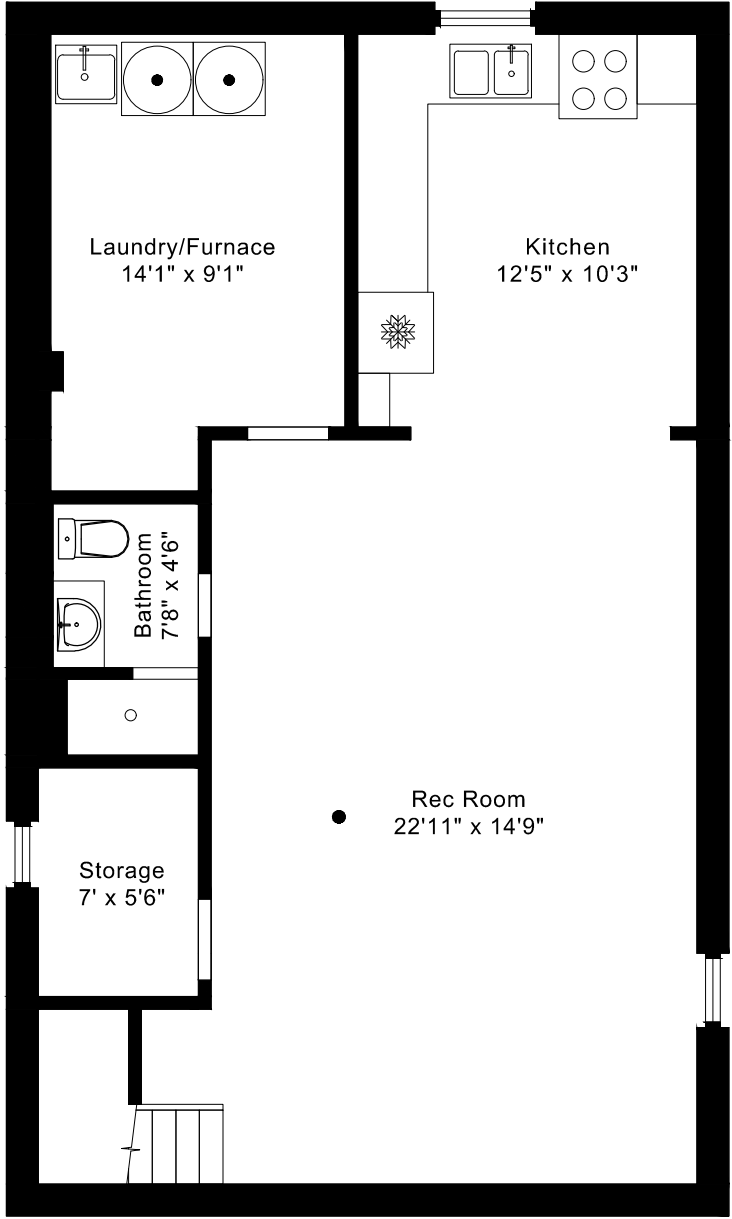
102 BINSWOOD AVENUE FLOOR PLANS



MAIN FLOOR
825 SQUARE FEET



SECOND FLOOR
490 SQUARE FEET

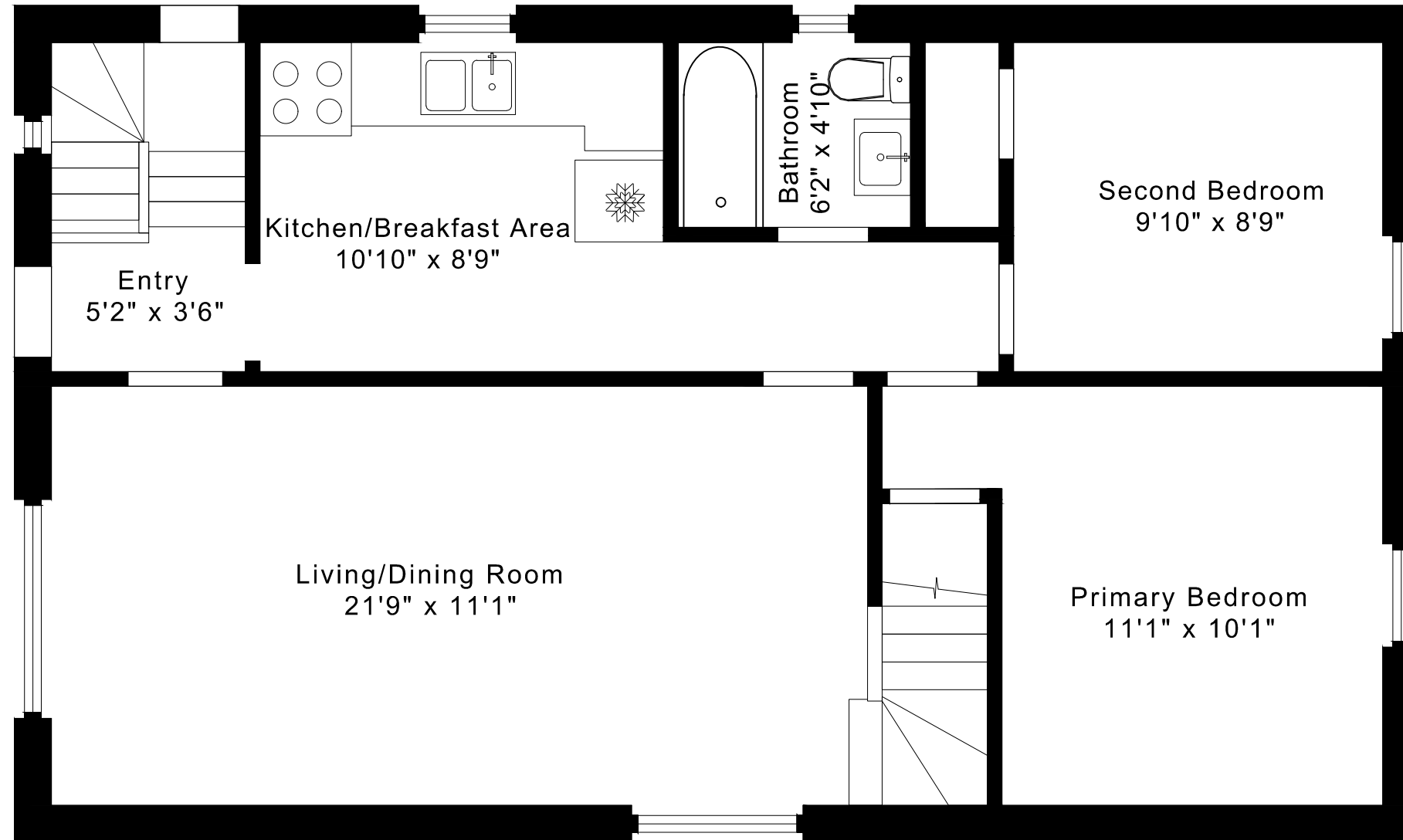


LOWER FLOOR
825 SQUARE FEET

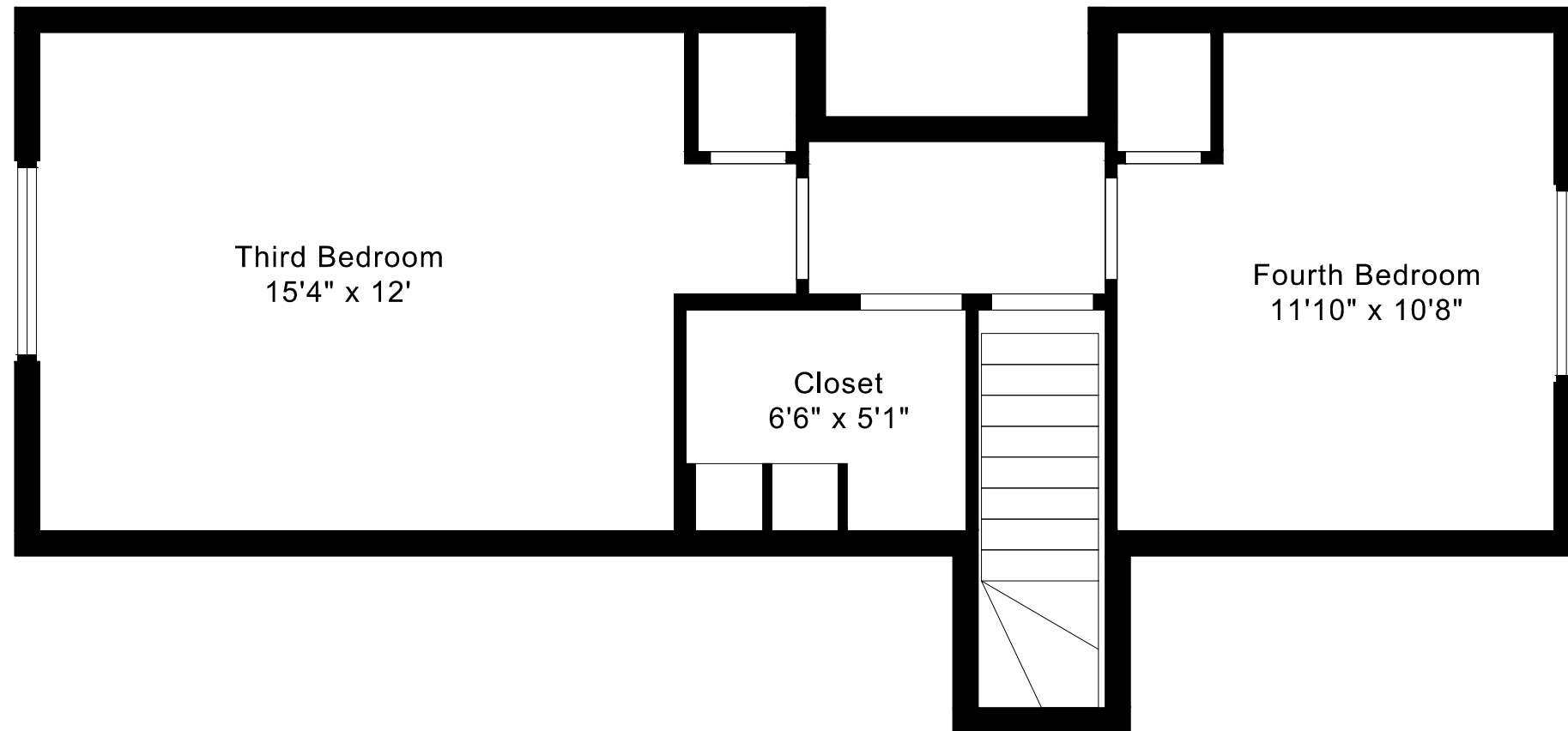
1315 sq ft + 825 sq ft
BELOW GRADE

102 BINSWOOD AVENUE FLOOR PLANS

MAIN FLOOR 825 SQUARE FEET

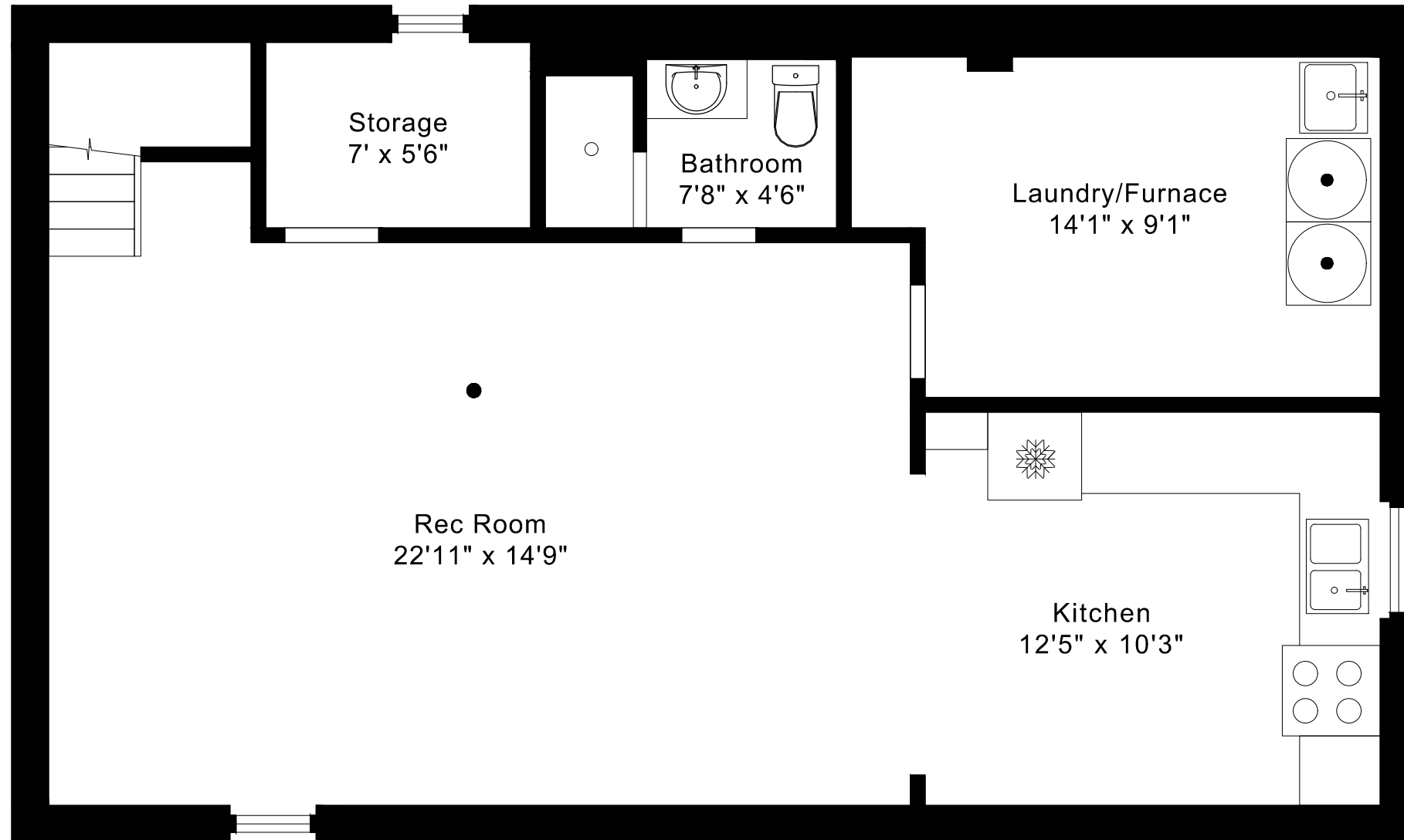


102 BINSWOOD AVENUE
FLOOR PLANS
SECOND FLOOR 490 SQUARE FEET



102 BINSWOOD AVENUE FLOOR PLANS

LOWER FLOOR 825 SQUARE FEET



102 BINSWOOD AVENUE ROOM MEASUREMENTS

Floor	Room	Imperial						Metric [m]		
		Length		Width		Height		Length	Width	Height
		Feet	Inches	Feet	Inches	Feet	Inches			
Second	Third Bedroom	15	4	12	0	7	0	4,67	3,66	2,13
	Fourth Bedroom	11	10	10	8	7	0	3,61	3,25	2,13
	Closet	6	6	5	1	7	0	1,98	1,55	2,13
Main	Entry	5	2	3	6	8	2	1,57	1,07	2,49
	Living/Dining Room	21	9	11	1	8	2	6,63	3,38	2,49
	Kitchen/Breakfast Area	10	10	8	9	8	2	3,30	2,67	2,49
	Primary Bedroom	11	1	10	1	8	2	3,38	3,07	2,49
	Second Bedroom	9	10	8	9	8	2	3,00	2,67	2,49
	Bathroom	6	2	4	10	8	2	1,88	1,47	2,49
Lower	Rec Room	22	11	14	9	6	8	6,99	4,50	2,03
	Kitchen	12	5	10	3	6	8	3,78	3,12	2,03
	Bathroom	7	8	4	6	6	8	2,34	1,37	2,03
	Storage	7	0	5	6	6	8	2,13	1,68	2,03
	Laundry/Furnace	14	1	9	1	6	8	4,29	2,77	2,03

CAPTURED ON: 18 JUN 2026
 DIMENSIONS ARE APPROXIMATE AND SHOULD BE CONSIDERED
 ILLUSTRATIVE ONLY.

1315 sq ft + 825 sq ft
 BELOW GRADE

The following is a disclaimer regarding the approximate nature of dimensions and floor areas listed in this document:

Disclaimer:

The dimensions and floor areas listed in this document are provided as an estimate only and are intended to be used for illustration purposes only. These measurements are not necessarily meant to be a perfect representation of the actual space.

Notes regarding measurement methods and accuracy:

The utilization of laser measurement technology during the 3D model capturing process at the location provides an accurate representation of floor plans, with a typical margin of error of 3-5%. For the most accurate and official measurement data, it is advised to consult official documents such as MPAC records, builder's pre-construction plans, or data from certified measurement companies.

Exterior wall thickness is included in the calculation of the overall square footage and is considered as a component of the footprint. The wall thickness measurement is obtained onsite whenever possible, or estimated in the event where obtaining onsite measurements is not possible, such as in the case of condominium buildings where wall thickness may vary throughout the building.