



**4131 NW Hosman Cir  
Silverdale, WA 98383**





Welcome home to space, comfort, and convenience in one of Silverdale's most desirable neighborhoods, Crystal Creek. Situated on a level, fully fenced 0.64-acre lot, this property offers one of the largest usable lawn areas in the community, perfect for soccer games, backyard barbecues, gardening, pets, and everyday play.

Inside, you'll find numerous updates already completed, including new carpet, new dining room flooring, updated kitchen appliances, a new heat pump, new water heater all in 2023, vinyl windows, and a newer 40-year roof. Natural light fills the home, while thoughtful features like a skylight, insulated garage, security system, and generator setup provide year-round comfort and peace of mind. The expansive backyard is ready to enjoy with a new patio, mature landscaping, storage sheds, and a play structure that stays. Whether you're hosting friends, watching the kids play, or simply enjoying the privacy of your own backyard retreat, this property offers room to spread out that's rarely found in neighborhood living.



Conveniently located just minutes from Naval Base Kitsap Bangor, St. Michael Medical Center, shopping, dining, schools, and recreation, this move-in-ready home is an excellent opportunity for military families, commuters, and anyone looking for extra outdoor space without sacrificing convenience.

**MLS# 2540989**  
**2140 Sq Ft | 4 Bedroom | 2.5 Bath**

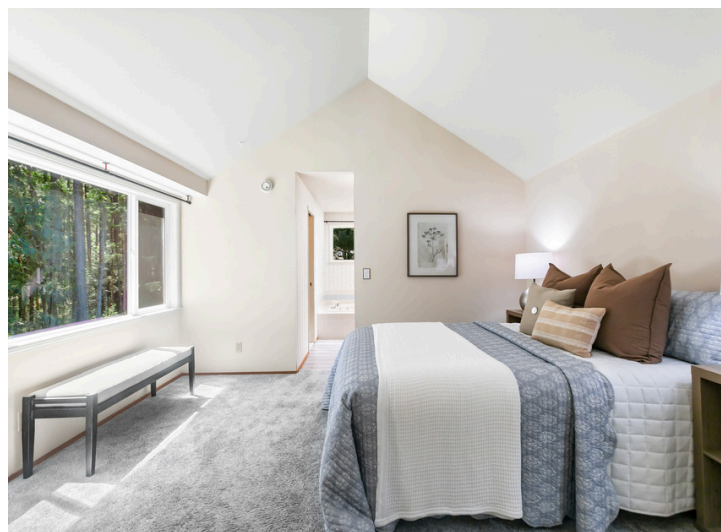
## Home Features

- One of the Largest Usable Lawn Areas in the Neighborhood
- Level 0.64-Acre Fully Fenced Lot
- Vaulted Ceilings & Skylight for Natural Light
- Attached Insulated 2-Car Garage
- Forced Air Heating & Air Conditioning with Heat Pump
- Spacious Backyard with Patio, Play Structure & Storage Sheds
- Wired for Generator Backup Power



## Recent Updates

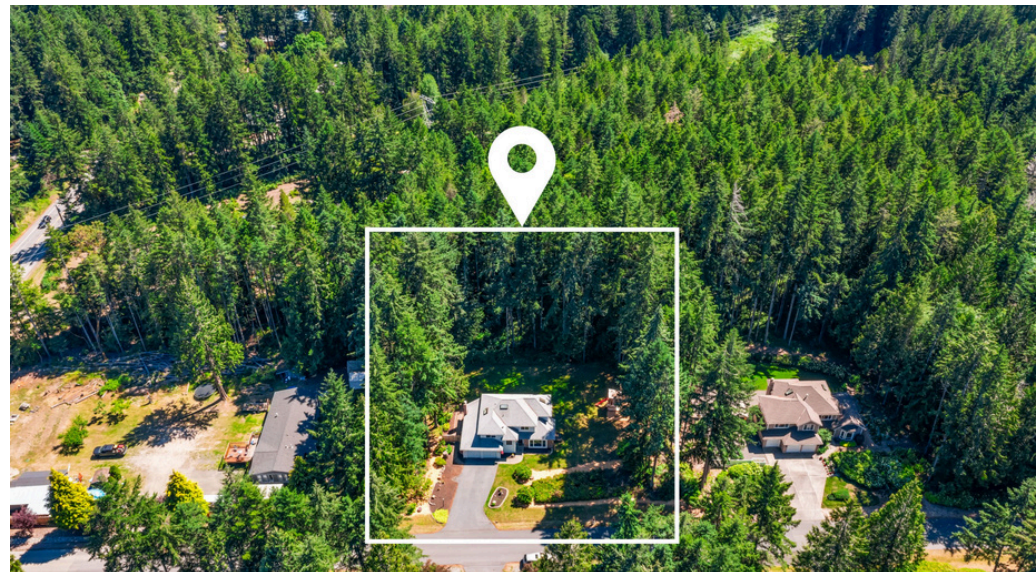
- New Heat Pump (2023)
- New Water Heater (2023)
- Updated Kitchen Appliances (2022-2023)
- New Carpet Throughout
- New Dining Room Flooring
- New Backyard Patio
- Vinyl Windows
- Durable 40-Year Composition Roof



## Extra Bonus Features

- Military-Friendly Location Near Naval Base Kitsap Bangor
- Play Structure & Storage Sheds
- Sprinkler System for Easy Lawn Care
- Security System & Exterior Security Lighting
- Mature Landscaping & Private Backyard Setting
- Walking Distance to Neighborhood Feel with Rare Outdoor Space
- Minutes to Silverdale Shopping, Dining, Schools & Medical Facilities





**Bre Enbom**  
REALTOR  
(360)-981-3736  
bre@infinitypnw.com  
www.soldbybre.com

