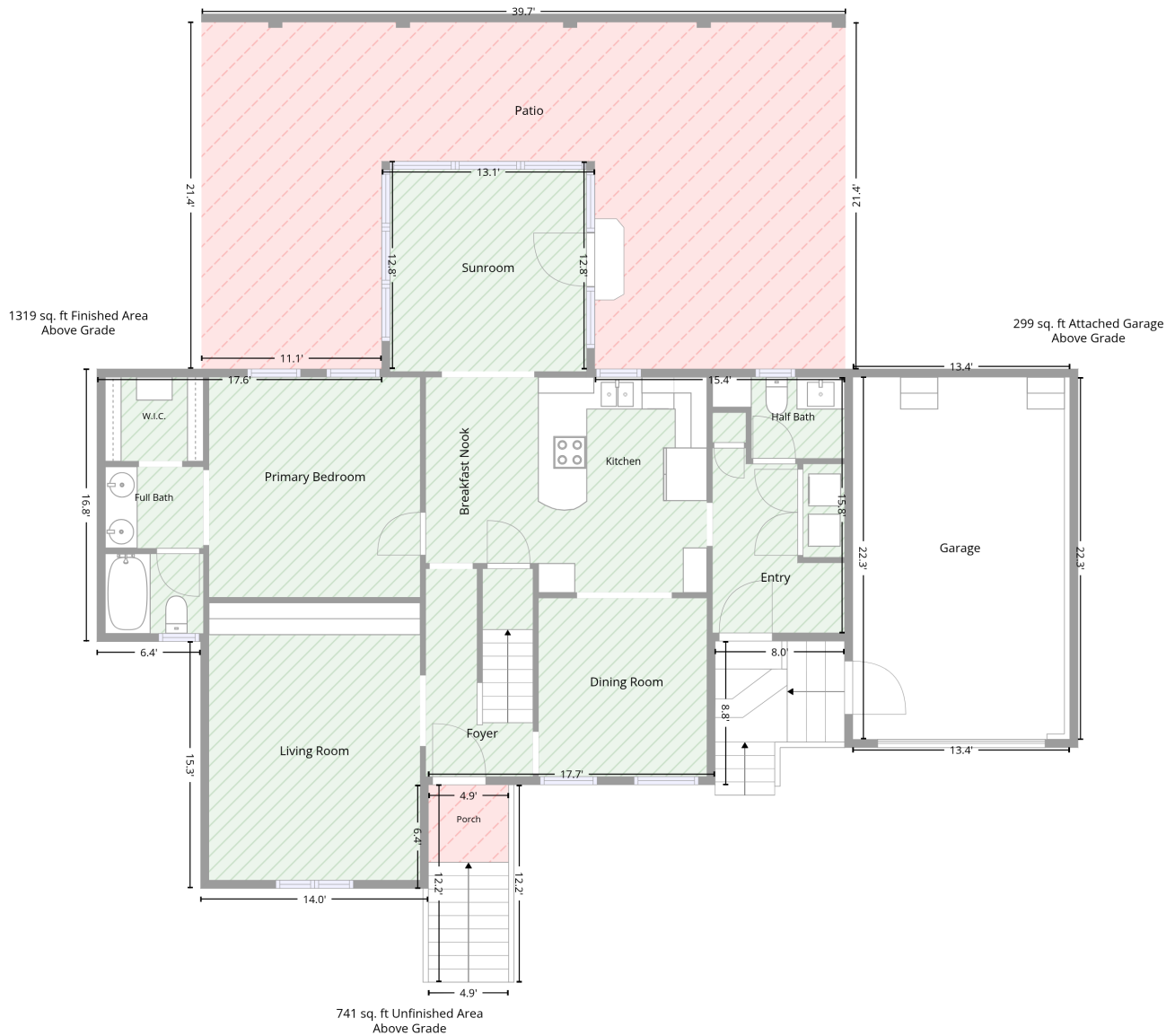


214 Trolley Car Way, Spartanburg, Spartanburg County, South Carolina, United States, 29302

Total area: 2701 sq. ft
Gross living area: 2020 sq. ft

Finished area: 2020 sq. ft
Non-standard finished area: 0 sq. ft

Level 1



Total area: 2000 sq. ft
Gross living area: 1319 sq. ft

Finished area: 1319 sq. ft
Non-standard finished area: 0 sq. ft

214 Trolley Car Way, Spartanburg, Spartanburg County, South Carolina, United States, 29302

Total area: 2701 sq. ft
Gross living area: 2020 sq. ft

Finished area: 2020 sq. ft
Non-standard finished area: 0 sq. ft

Level 1

Space	Area (sq. ft)	Calculation <small>Coordinate Polygon Area Algorithm using inches</small>
Finished Area • Living area • Finished Area	1319	$ \begin{aligned} & -((361 + 361) * (112.2 - 265.8) + (361 + 545.8) * (265.8 - 265.8) + (545.8 + 545.8) * (265.8 - 271.8) + (545.8 + 551.8) * (271.8 - 271.8) + (551.8 + 551.8) * (271.8 - 461.1) + (551.8 + 545.8) * \\ & (461.1 - 461.1) + (545.8 + 545.8) * (461.1 - 467.1) + (545.8 + 450) * (467.1 - 467.1) + (450 + 450) * (467.1 - 573.4) + (450 + 237.9) * (573.4 - 573.4) + (237.9 + 237.9) * (573.4 - 650) + (237.9 + 69.6) * (650 - 650) + (69.6 + 69.6) * (650 - 467.5) + (69.6 + -7.1) * (467.5 - 467.5) + (-7.1 + -7.1) * \\ & (467.5 - 265.8) + (-7.1 + 203.5) * (265.8 - 265.8) + (203.5 + 203.5) * (265.8 - 112.2) + (203.5 + 361) * (112.2 - 112.2)) * 0.5 * 0.00694 \end{aligned} $
PORCH • Non-living area • Unfinished Area	60	$ \begin{aligned} & -((297.3 + 297.3) * (573.4 - 719.4) + (297.3 + 238) * (719.4 - 719.4) + (238 + 237.9) * (719.4 - 573.4) + (237.9 + 297.3) * (573.4 - 573.4)) * 0.5 * 0.00694 \end{aligned} $
PATIO • Non-living area • Unfinished Area	681	$ \begin{aligned} & -((546.5 + 546.3) * (9.2 - 265.8) + (546.3 + 361) * (265.8 - 265.8) + (361 + 361) * (265.8 - 112.2) + (361 + 203.5) * (112.2 - 112.2) + (203.5 + 203.5) * (112.2 - 265.8) + (203.5 + 70.2) * (265.8 - 265.7) + (70.2 + 70.2) * (265.7 - 9.2) + (70.2 + 546.5) * (9.2 - 9.2)) * 0.5 * 0.00694 \end{aligned} $
GARAGE • Attached Garage	299	$ \begin{aligned} & -((712.4 + 712.4) * (271.8 - 539.8) + (712.4 + 551.8) * (539.8 - 539.8) + (551.8 + 551.8) * (539.8 - 271.8) + (551.8 + 712.4) * (271.8 - 271.8)) * 0.5 * 0.00694 \end{aligned} $

214 Trolley Car Way, Spartanburg, Spartanburg County, South Carolina, United States, 29302

Total area: 2701 sq. ft
Gross living area: 2020 sq. ft

Finished area: 2020 sq. ft
Non-standard finished area: 0 sq. ft

Property UPD

Data	Value
Structure	1
Unit	1
Level Number	1
Below Grade	false
Level Low Ceiling	false
ADU Indicator	false
Total Area	1319
Finished Area	1319
Non-Standard Finished Area	0
Structure	2
Unit	1
Level Number	1
Below Grade	false
Level Low Ceiling	false
ADU Indicator	false
Total Area	681
Finished Area	0
Non-Standard Finished Area	0
Structure	1
Unit	1
Level Number	2

214 Trolley Car Way, Spartanburg, Spartanburg County, South Carolina, United States, 29302

Total area: 2701 sq. ft
Gross living area: 2020 sq. ft

Finished area: 2020 sq. ft
Non-standard finished area: 0 sq. ft

Property UPD

Data	Value
Below Grade	false
Level Low Ceiling	false
ADU Indicator	false
Total Area	701
Finished Area	701
Non-Standard Finished Area	0