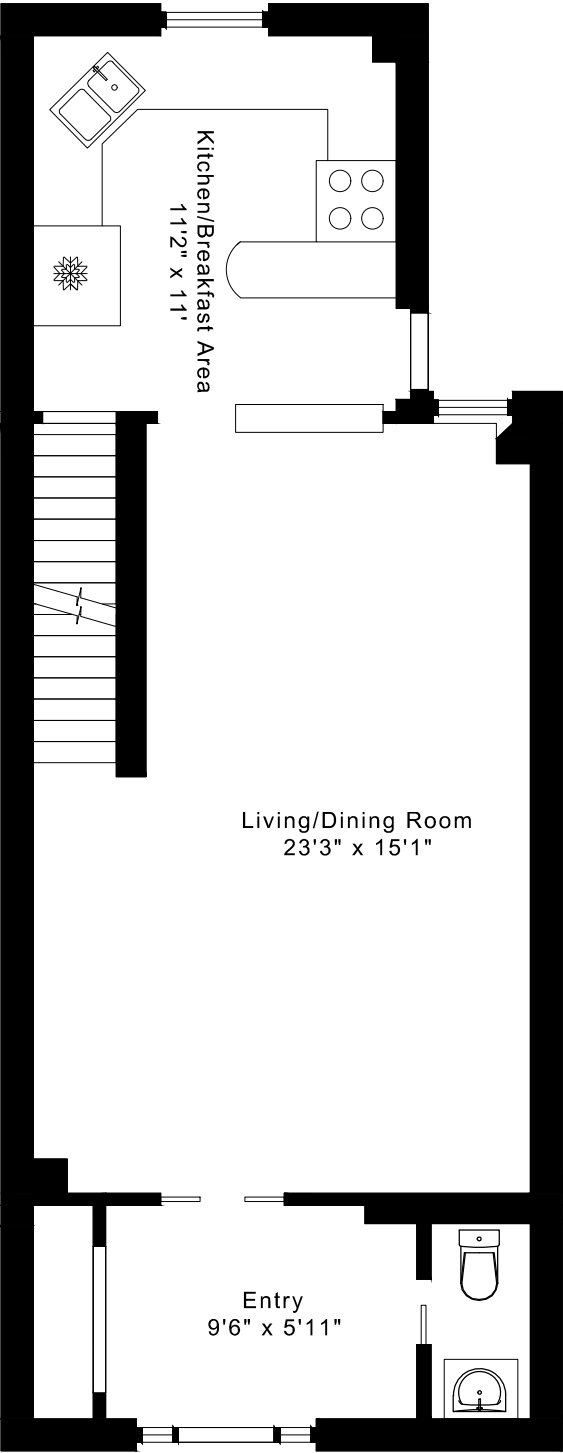
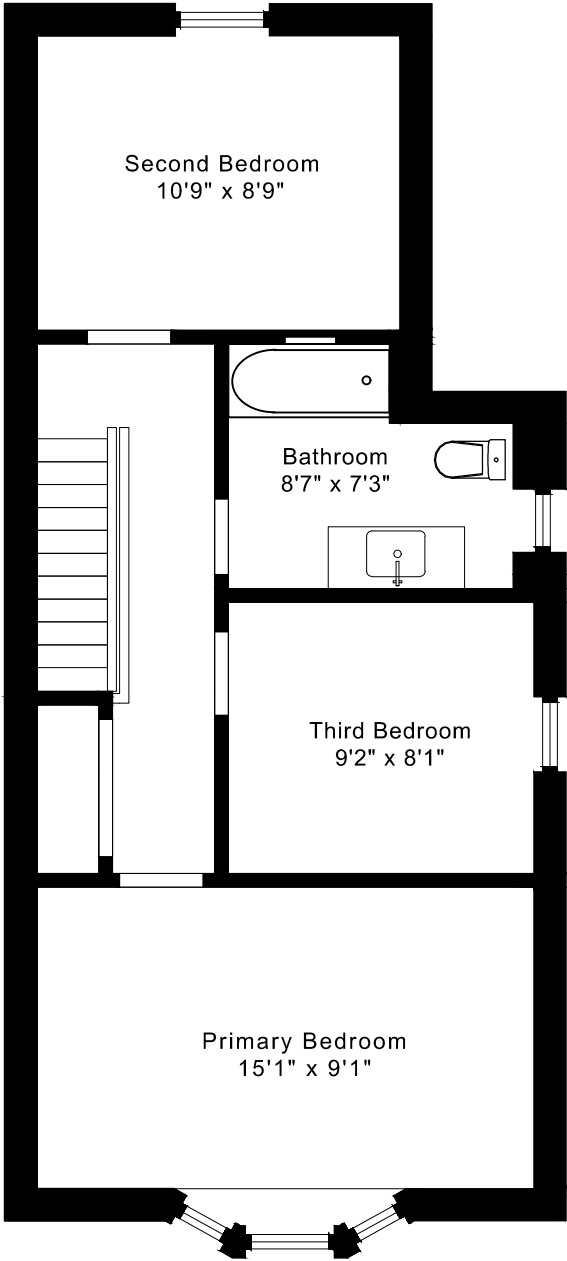


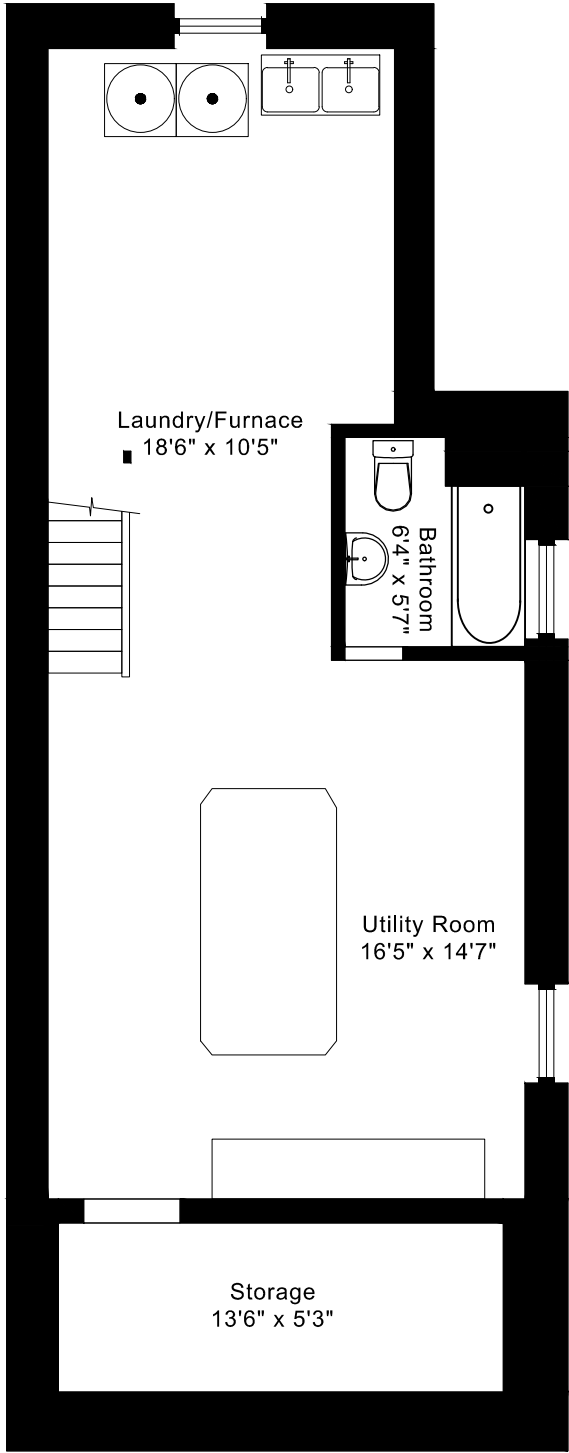
# 146 GLOUCESTER GROVE FLOOR PLANS



**MAIN FLOOR**  
715 SQUARE FEET



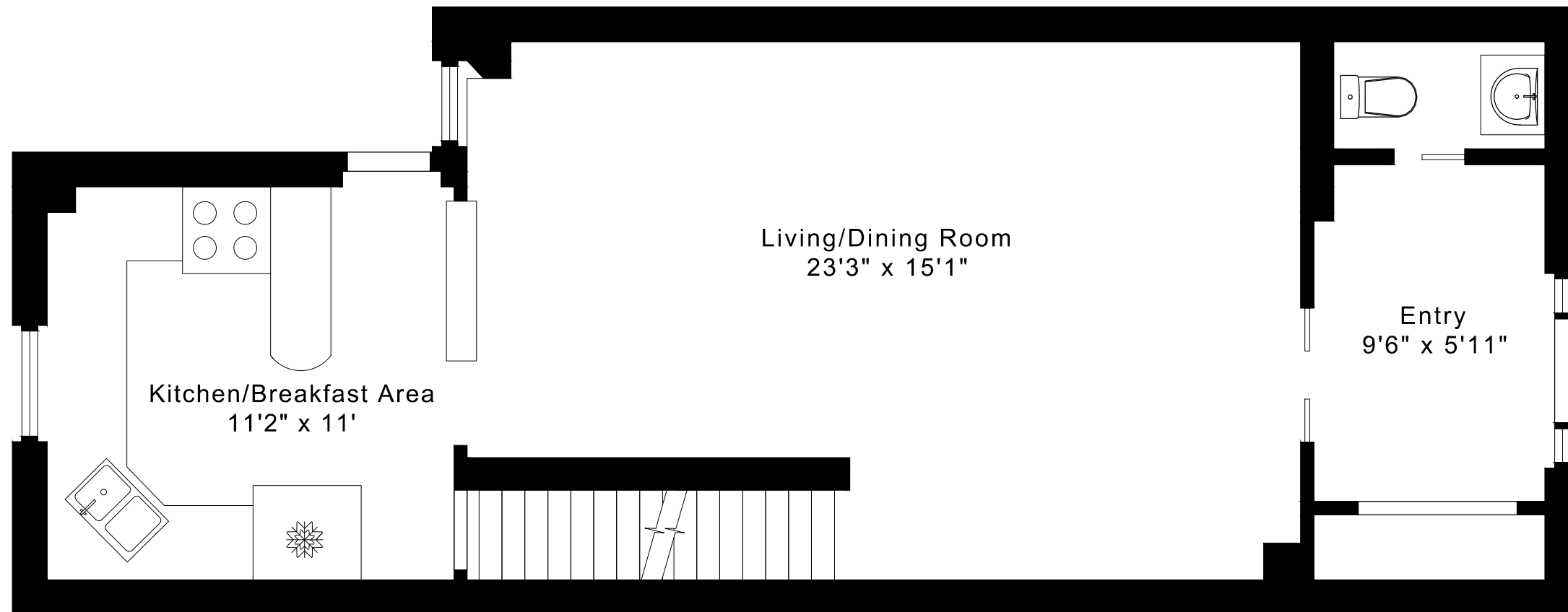
**SECOND FLOOR**  
595 SQUARE FEET



**LOWER FLOOR**  
715 SQUARE FEET

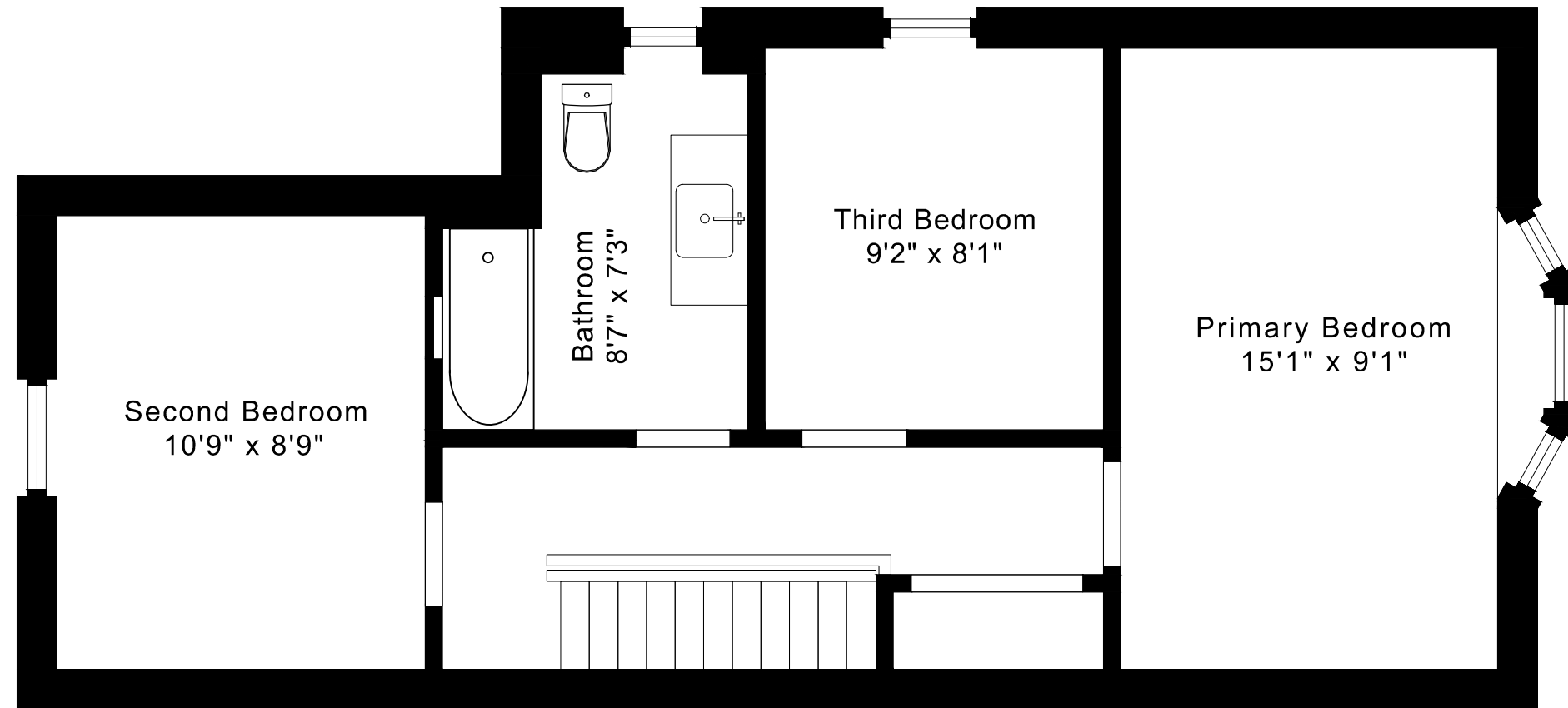
# 146 GLOUCESTER GROVE FLOOR PLANS

MAIN FLOOR 715 SQUARE FEET



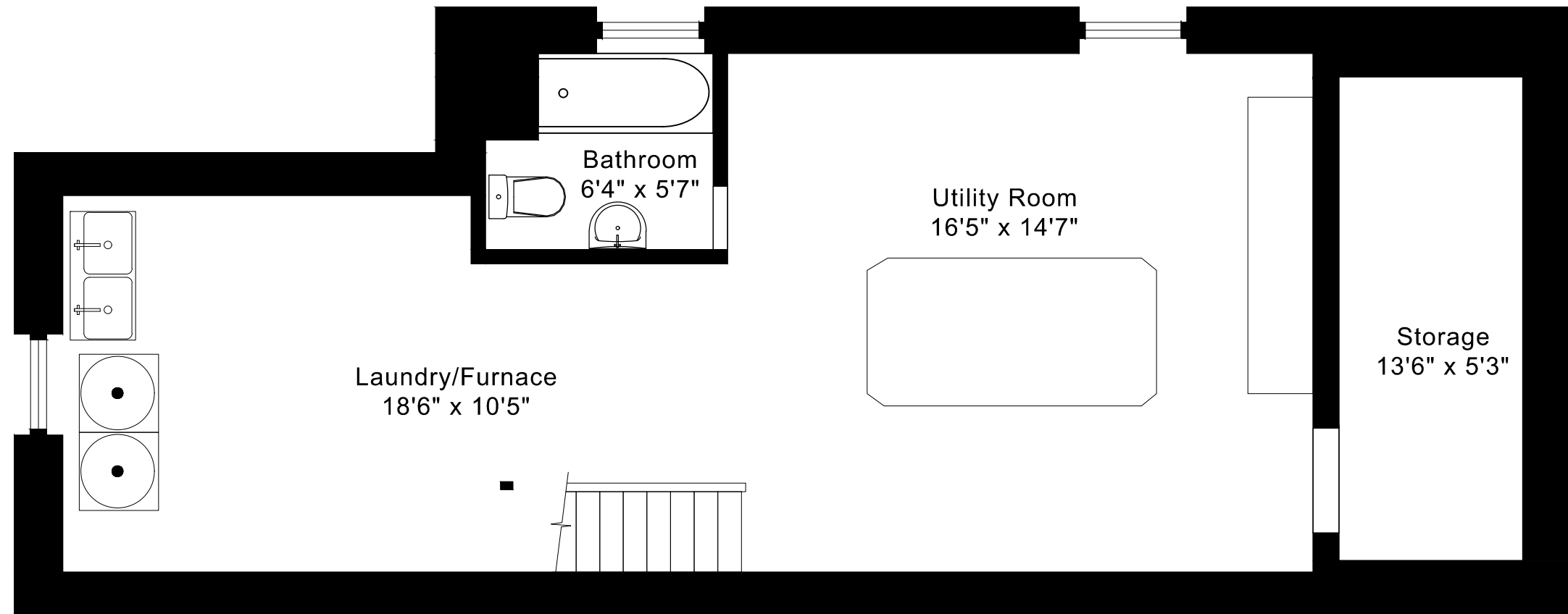
# 146 GLOUCESTER GROVE FLOOR PLANS

SECOND FLOOR 595 SQUARE FEET



# 146 GLOUCESTER GROVE FLOOR PLANS

LOWER FLOOR 715 SQUARE FEET



146 GLOUCESTER GROVE ROOM MEASUREMENTS

Floor	Room	Imperial						Metric [m]		
		Length		Width		Height		Length	Width	Height
		Feet	Inches	Feet	Inches	Feet	Inches			
Second	Primary Bedroom	15	1	9	1	7	11	4,60	2,77	2,41
	Second Bedroom	10	9	8	9	7	11	3,28	2,67	2,41
	Third Bedroom	9	2	8	1	7	11	2,79	2,46	2,41
	Bathroom	8	7	7	3	7	11	2,62	2,21	2,41
Main	Entry	9	6	5	11	8	4	2,90	1,80	2,54
	Living/Dining Room	23	3	15	1	8	4	7,09	4,60	2,54
	Kitchen/Breakfast Area	11	2	11	0	8	4	3,40	3,35	2,54
Lower	Utility Room	16	5	14	7	6	5	5,00	4,45	1,96
	Bathroom	6	4	5	7	6	5	1,93	1,70	1,96
	Storage	13	6	5	3	6	5	4,11	1,60	1,96
	Laundry/Furnace	18	6	10	5	6	5	5,64	3,18	1,96

CAPTURED ON: 18 JUN 2026  
 DIMENSIONS ARE APPROXIMATE AND SHOULD BE CONSIDERED  
 ILLUSTRATIVE ONLY.

1310 sq ft + 715 sq ft  
 BELOW GRADE

The following is a disclaimer regarding the approximate nature of dimensions and floor areas listed in this document:

---

**Disclaimer:**

The dimensions and floor areas listed in this document are provided as an estimate only and are intended to be used for illustration purposes only. These measurements are not necessarily meant to be a perfect representation of the actual space.

**Notes regarding measurement methods and accuracy:**

The utilization of laser measurement technology during the 3D model capturing process at the location provides an accurate representation of floor plans, with a typical margin of error of 3-5%. For the most accurate and official measurement data, it is advised to consult official documents such as MPAC records, builder's pre-construction plans, or data from certified measurement companies.

Exterior wall thickness is included in the calculation of the overall square footage and is considered as a component of the footprint. The wall thickness measurement is obtained onsite whenever possible, or estimated in the event where obtaining onsite measurements is not possible, such as in the case of condominium buildings where wall thickness may vary throughout the building.