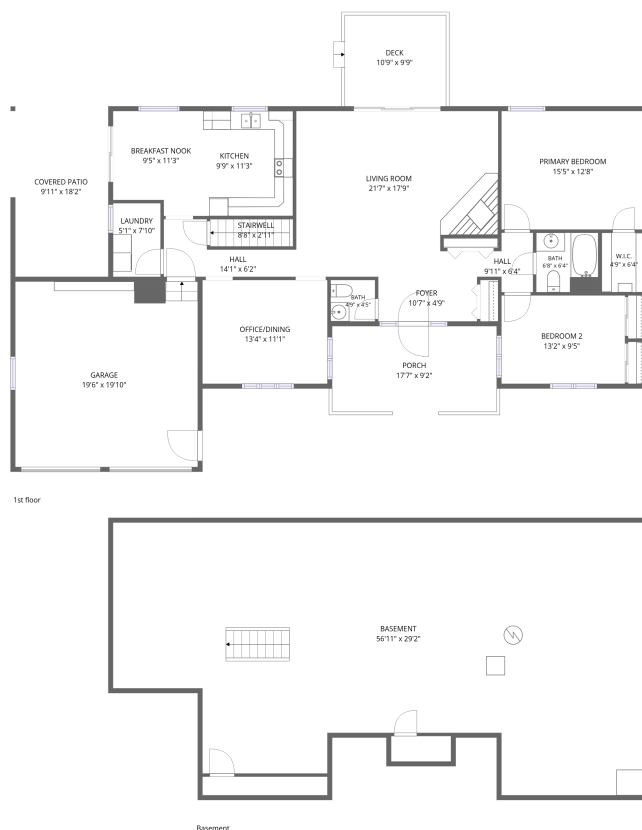




377 Glengrove Road, Youngstown Estates, Porter, Youngstown, Niagara County, New York, United



Total Area: 1398 sq. ft

Basement: 0 sq. ft, 1st Floor: 1398 sq. ft

Excluded: Undefined 50 sq. ft, Basement 1393 sq. ft, Garage 386 sq. ft, Porch 161 sq. ft, Deck 109 sq. ft, Covered patio 181 sq. ft, Stairwell 26 sq. ft, Walls: 225 sq. ft

Property summary

2 Floors


2 Bedrooms

1 Bathrooms

Home data report

377 Glengrove Road, Youngstown Estates, Porter, Youngstown, Niagara County, New York, United

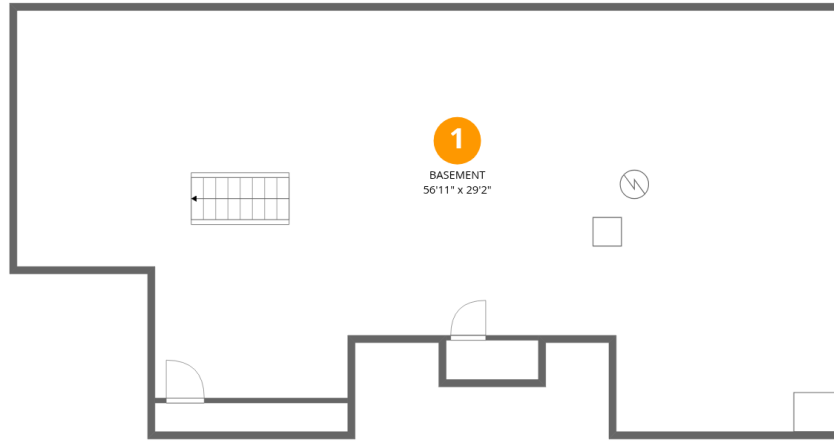


 **1**
Half baths

 **1**
Garages



377 Glengrove Road, Youngstown Estates, Porter, Youngstown, Niagara County, New York, United



Room dimensions

Floor 1 Below grade

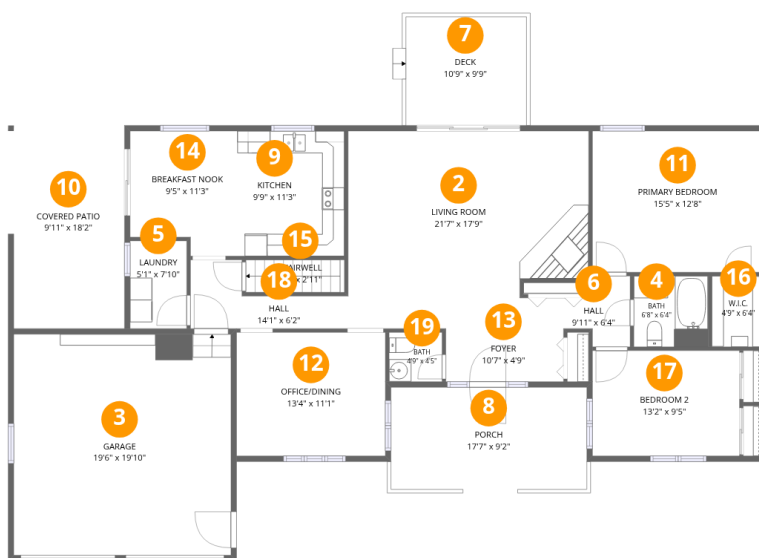
Total:0sqft

Excluded: 1443sqft

#		Dimensions	sqft	Counted as living area
1	Basement	56'11" x 29'2"	1393 sq. ft	No



377 Glengrove Road, Youngstown Estates, Porter, Youngstown, Niagara County, New York, United



Room dimensions

Floor 2

Total:1398sqft Excluded: 863sqft

#		Dimensions	sqft	Counted as living area
2	Living Room	21'7" x 17'9"	354 sq. ft	Yes
3	Garage	19'6" x 19'10"	386 sq. ft	No
4	Bath	6'8" x 6'4"	42 sq. ft	Yes
5	Laundry	5'1" x 7'10"	40 sq. ft	Yes
6	Hall	9'11" x 6'4"	39 sq. ft	Yes
7	Deck	10'9" x 9'9"	109 sq. ft	No
8	Porch	17'7" x 9'2"	161 sq. ft	No
9	Kitchen	9'9" x 11'3"	110 sq. ft	Yes
10	Covered Patio	9'11" x 18'2"	181 sq. ft	No
11	Primary Bedroom	15'5" x 12'8"	195 sq. ft	Yes
12	Office/Dining	13'4" x 11'1"	148 sq. ft	Yes



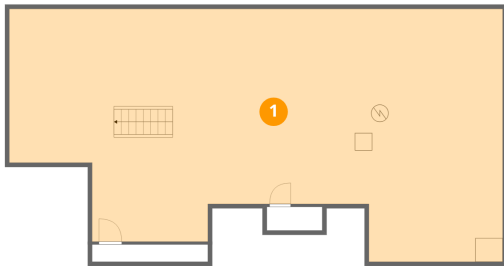
377 Glengrove Road, Youngstown Estates, Porter, Youngstown, Niagara County, New York, United

#		Dimensions	sqft	Counted as living area
13	Foyer	10'7" x 4'9"	50 sq. ft	Yes
14	Breakfast Nook	9'5" x 11'3"	97 sq. ft	Yes
15	Stairwell	8'8" x 2'11"	26 sq. ft	No
16	W.I.C.	4'9" x 6'4"	30 sq. ft	Yes
17	Bedroom 2	13'2" x 9'5"	125 sq. ft	Yes
18	Hall	14'1" x 6'2"	56 sq. ft	Yes
19	Bath	4'9" x 4'5"	21 sq. ft	Yes



377 Glengrove Road, Youngstown Estates, Porter, Youngstown, Niagara County, New York, United

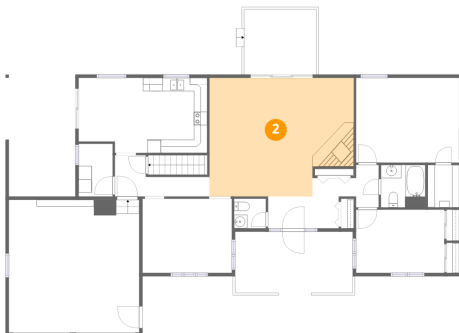
1 Floor 1 - Basement



Dimensions: 56'11" x 29'2"
Area: 1393 sq. ft
Counted as living area: No

Heated: Yes
Finished: No
Enclosed: Yes
Contiguous: Yes
Permitted: Yes
Wet space: No
Addition: No
Conversion: No

2 Floor 2 - Living Room

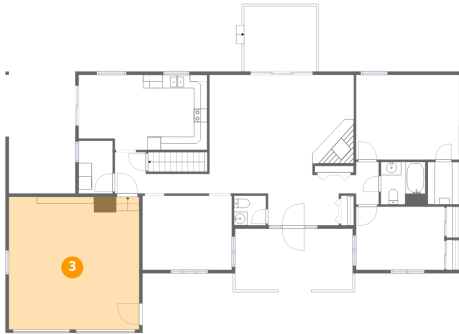


Dimensions: 21'7" x 17'9"
Area: 354 sq. ft
Counted as living area: Yes

Heated: Yes
Finished: Yes
Enclosed: Yes
Contiguous: Yes
Permitted: Yes
Wet space: No
Addition: No
Conversion: No



3 Floor 2 - Garage



Dimensions: 19'6" x 19'10"
Area: 386 sq. ft
Counted as living area: No

Heated: No
Finished: No
Enclosed: Yes
Contiguous: Yes
Permitted: Yes
Wet space: No
Addition: No
Conversion: No

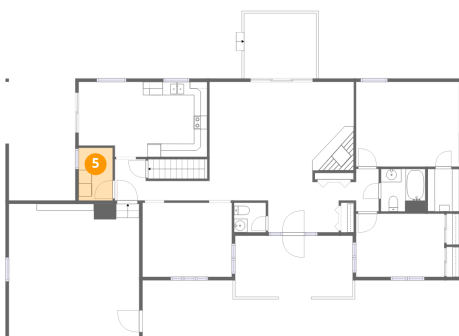
4 Floor 2 - Bath



Dimensions: 6'8" x 6'4"
Area: 42 sq. ft
Counted as living area: Yes

Heated: Yes
Finished: Yes
Enclosed: Yes
Contiguous: Yes
Permitted: Yes
Wet space: Yes
Addition: No
Conversion: No

5 Floor 2 - Laundry

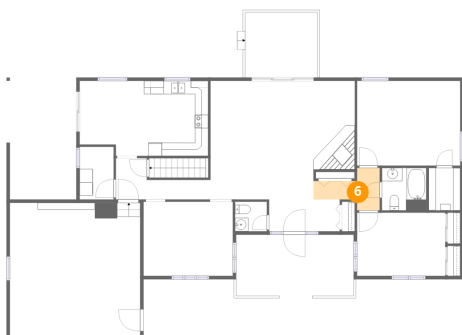


Dimensions: 5'1" x 7'10"
Area: 40 sq. ft
Counted as living area: Yes

Heated: Yes
Finished: Yes
Enclosed: Yes
Contiguous: Yes
Permitted: Yes
Wet space: No
Addition: No
Conversion: No



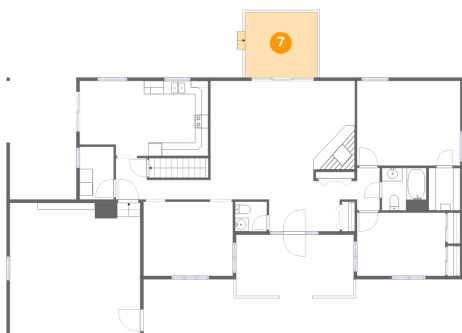
6 Floor 2 - Hall



Dimensions: 9'11" x 6'4"
Area: 39 sq. ft
Counted as living area: Yes

Heated: Yes
Finished: Yes
Enclosed: Yes
Contiguous: Yes
Permitted: Yes
Wet space: No
Addition: No
Conversion: No

7 Floor 2 - Deck



Dimensions: 10'9" x 9'9"
Area: 109 sq. ft
Counted as living area: No

Heated: No
Finished: No
Enclosed: No
Contiguous: Yes
Permitted: Yes
Wet space: No
Addition: No
Conversion: No

8 Floor 2 - Porch

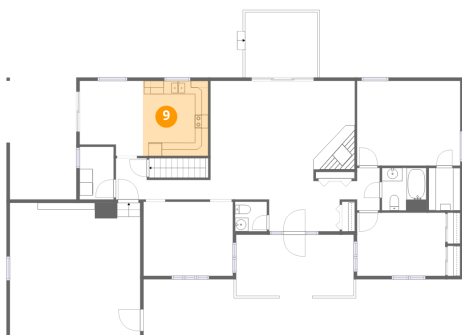


Dimensions: 17'7" x 9'2"
Area: 161 sq. ft
Counted as living area: No

Heated: No
Finished: No
Enclosed: No
Contiguous: Yes
Permitted: Yes
Wet space: No
Addition: No
Conversion: No



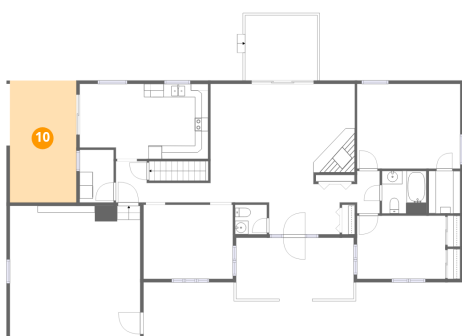
9 Floor 2 - Kitchen



Dimensions: 9'9" x 11'3"
Area: 110 sq. ft
Counted as living area: Yes

Heated: Yes
Finished: Yes
Enclosed: Yes
Contiguous: Yes
Permitted: Yes
Wet space: No
Addition: No
Conversion: No

10 Floor 2 - Covered Patio



Dimensions: 9'11" x 18'2"
Area: 181 sq. ft
Counted as living area: No

Heated: No
Finished: No
Enclosed: No
Contiguous: Yes
Permitted: Yes
Wet space: No
Addition: No
Conversion: No

11 Floor 2 - Primary Bedroom

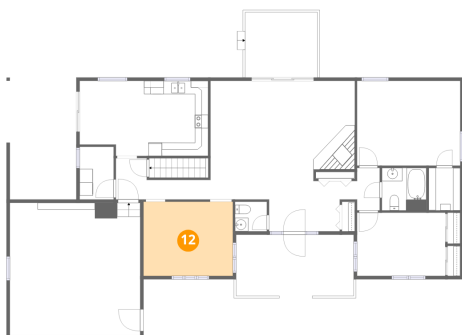


Dimensions: 15'5" x 12'8"
Area: 195 sq. ft
Counted as living area: Yes

Heated: Yes
Finished: Yes
Enclosed: Yes
Contiguous: Yes
Permitted: Yes
Wet space: No
Addition: No
Conversion: No



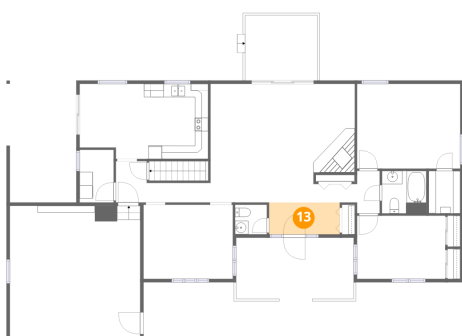
12 Floor 2 - Office/Dining



Dimensions: 13'4" x 11'1"
Area: 148 sq. ft
Counted as living area: Yes

Heated: Yes
Finished: Yes
Enclosed: Yes
Contiguous: Yes
Permitted: Yes
Wet space: No
Addition: No
Conversion: No

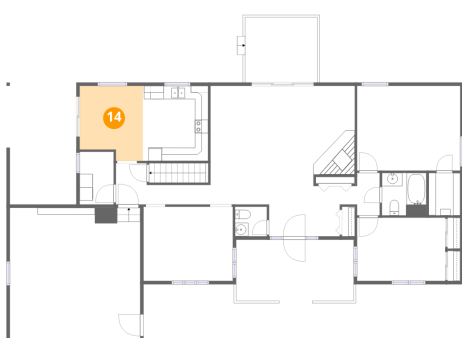
13 Floor 2 - Foyer



Dimensions: 10'7" x 4'9"
Area: 50 sq. ft
Counted as living area: Yes

Heated: Yes
Finished: Yes
Enclosed: Yes
Contiguous: Yes
Permitted: Yes
Wet space: No
Addition: No
Conversion: No

14 Floor 2 - Breakfast Nook



Dimensions: 9'5" x 11'3"
Area: 97 sq. ft
Counted as living area: Yes

Heated: Yes
Finished: Yes
Enclosed: Yes
Contiguous: Yes
Permitted: Yes
Wet space: No
Addition: No
Conversion: No



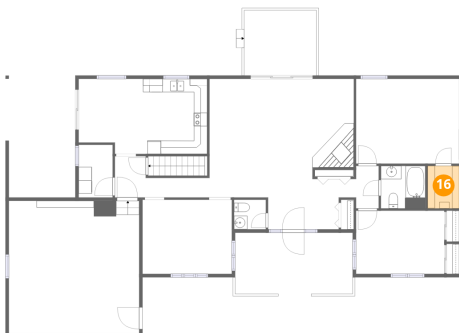
15 Floor 2 - Stairwell



Dimensions: 8'8" x 2'11"
Area: 26 sq. ft
Counted as living area: No

Heated: No
Finished: No
Enclosed: No
Contiguous: Yes
Permitted: No
Wet space: No
Addition: No
Conversion: No

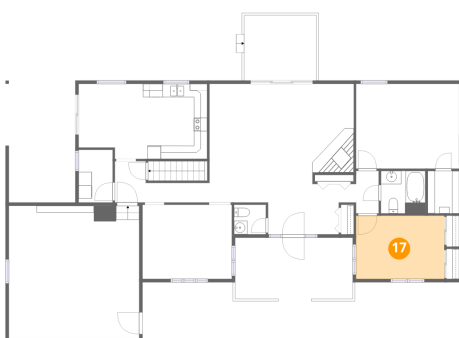
16 Floor 2 - W.I.C.



Dimensions: 4'9" x 6'4"
Area: 30 sq. ft
Counted as living area: Yes

Heated: Yes
Finished: Yes
Enclosed: Yes
Contiguous: Yes
Permitted: Yes
Wet space: No
Addition: No
Conversion: No

17 Floor 2 - Bedroom 2

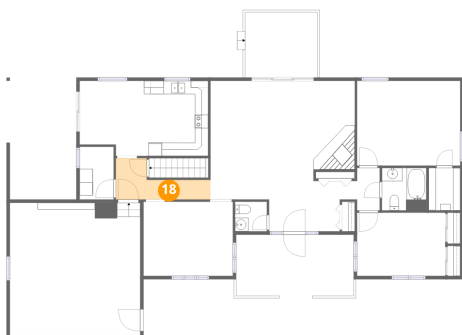


Dimensions: 13'2" x 9'5"
Area: 125 sq. ft
Counted as living area: Yes

Heated: Yes
Finished: Yes
Enclosed: Yes
Contiguous: Yes
Permitted: Yes
Wet space: No
Addition: No
Conversion: No



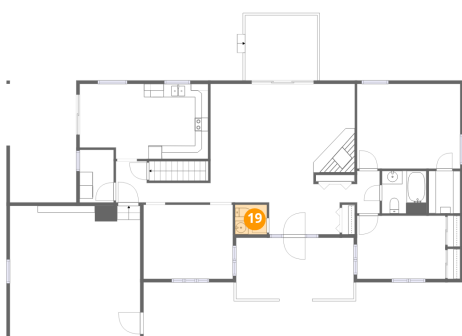
18 Floor 2 - Hall



Dimensions: 14'1" x 6'2"
Area: 56 sq. ft
Counted as living area: Yes

Heated: Yes
Finished: Yes
Enclosed: Yes
Contiguous: Yes
Permitted: Yes
Wet space: No
Addition: No
Conversion: No

19 Floor 2 - Bath



Dimensions: 4'9" x 4'5"
Area: 21 sq. ft
Counted as living area: Yes

Heated: Yes
Finished: Yes
Enclosed: Yes
Contiguous: Yes
Permitted: Yes
Wet space: Yes
Addition: No
Conversion: No