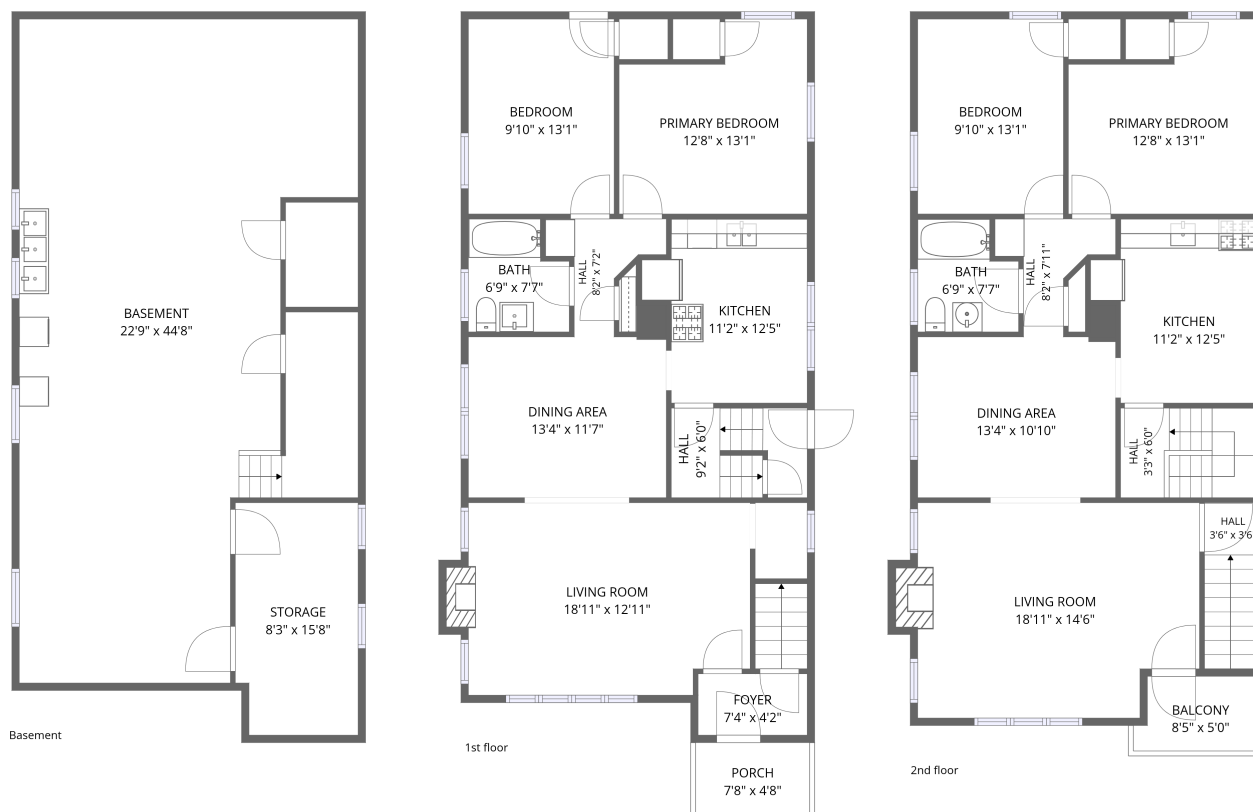


14 St James Road, Cheektowaga, Erie County, New York, United States, 14225



Total Area: 2111 sq. ft

Basement: 0 sq. ft, 1st Floor: 1059 sq. ft, 2nd Floor: 1052 sq. ft

Excluded: Storage 133 sq. ft, Basement 877 sq. ft, Undefined 34 sq. ft, Porch 36 sq. ft, Fireplace 8 sq. ft, Balcony 39 sq. ft, Walls: 215 sq. ft

Property summary

 **3** Floors

 **4** Bedrooms

 **2** Bathrooms

Home data report

14 St James Road, Cheektowaga, Erie County, New York, United States, 14225



Room dimensions

Floor 1 Below grade

Total:0sqft

Excluded: 1044sqft

#		Dimensions	sqft	Counted as living area
1	Storage	8'3" x 15'8"	126 sq. ft	No
2	Basement	22'9" x 44'8"	868 sq. ft	No

Home data report

14 St James Road, Cheektowaga, Erie County, New York, United States, 14225



Room dimensions

Floor 2

Total:1059sqft Excluded: 44sqft

#		Dimensions	sqft	Counted as living area
3	Foyer	7'4" x 4'2"	30 sq. ft	Yes
4	Porch	7'8" x 4'8"	36 sq. ft	No
5	Bath	6'9" x 7'7"	46 sq. ft	Yes
6	Dining Area	13'4" x 11'7"	146 sq. ft	Yes
7	Kitchen	11'2" x 12'5"	119 sq. ft	Yes
8	Hall	9'2" x 6'0"	51 sq. ft	Yes
9	Hall	8'2" x 7'2"	34 sq. ft	Yes
10	Bedroom	9'10" x 13'1"	129 sq. ft	Yes
11	Living Room	18'11" x 12'11"	245 sq. ft	Yes
12	Primary Bedroom	12'8" x 13'1"	144 sq. ft	Yes

Home data report

14 St James Road, Cheektowaga, Erie County, New York, United States, 14225



Room dimensions

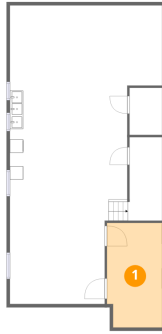
Floor 3

Total:1052sqft Excluded: 39sqft

#		Dimensions	sqft	Counted as living area
13	Hall	3'6" x 3'6"	39 sq. ft	Yes
14	Hall	3'3" x 6'0"	55 sq. ft	Yes
15	Living Room	18'11" x 14'6"	268 sq. ft	Yes
16	Hall	8'2" x 7'11"	36 sq. ft	Yes
17	Primary Bedroom	12'8" x 13'1"	144 sq. ft	Yes
18	Dining Area	13'4" x 10'10"	144 sq. ft	Yes
19	Bath	6'9" x 7'7"	46 sq. ft	Yes
20	Bedroom	9'10" x 13'1"	129 sq. ft	Yes
21	Balcony	8'5" x 5'0"	39 sq. ft	No
22	Kitchen	11'2" x 12'5"	119 sq. ft	Yes

14 St James Road, Cheektowaga, Erie County, New York, United States, 14225

1 Floor 1 - Storage



Dimensions: 8'3" x 15'8"
Area: 126 sq. ft
Counted as living area: No

Heated: No
Finished: No
Enclosed: No
Contiguous: Yes
Permitted: Yes
Wet space: No
Addition: No
Conversion: No

2 Floor 1 - Basement



Dimensions: 22'9" x 44'8"
Area: 868 sq. ft
Counted as living area: No

Heated: No
Finished: No
Enclosed: Yes
Contiguous: Yes
Permitted: Yes
Wet space: No
Addition: No
Conversion: No

3 Floor 2 - Foyer



Dimensions: 7'4" x 4'2"
Area: 30 sq. ft
Counted as living area: Yes

Heated: Yes
Finished: Yes
Enclosed: Yes
Contiguous: Yes
Permitted: Yes
Wet space: No
Addition: No
Conversion: No

4 Floor 2 - Porch



Dimensions: 7'8" x 4'8"
Area: 36 sq. ft
Counted as living area: No

Heated: No
Finished: No
Enclosed: No
Contiguous: Yes
Permitted: Yes
Wet space: No
Addition: No
Conversion: No

5 Floor 2 - Bath



Dimensions: 6'9" x 7'7"
Area: 46 sq. ft
Counted as living area: Yes

Heated: Yes
Finished: Yes
Enclosed: Yes
Contiguous: Yes
Permitted: Yes
Wet space: Yes
Addition: No
Conversion: No

14 St James Road, Cheektowaga, Erie County, New York, United States, 14225

6 Floor 2 - Dining Area



Dimensions: 13'4" x 11'7"
Area: 146 sq. ft
Counted as living area: Yes

Heated: Yes
Finished: Yes
Enclosed: Yes
Contiguous: Yes
Permitted: Yes
Wet space: No
Addition: No
Conversion: No

7 Floor 2 - Kitchen



Dimensions: 11'2" x 12'5"
Area: 119 sq. ft
Counted as living area: Yes

Heated: Yes
Finished: Yes
Enclosed: Yes
Contiguous: Yes
Permitted: Yes
Wet space: No
Addition: No
Conversion: No

8 Floor 2 - Hall



Dimensions: 9'2" x 6'0"
Area: 51 sq. ft
Counted as living area: Yes

Heated: Yes
Finished: Yes
Enclosed: Yes
Contiguous: Yes
Permitted: Yes
Wet space: No
Addition: No
Conversion: No

9 Floor 2 - Hall



Dimensions: 8'2" x 7'2"
Area: 34 sq. ft
Counted as living area: Yes

Heated: Yes
Finished: Yes
Enclosed: Yes
Contiguous: Yes
Permitted: Yes
Wet space: No
Addition: No
Conversion: No

10 Floor 2 - Bedroom



Dimensions: 9'10" x 13'1"
Area: 129 sq. ft
Counted as living area: Yes

Heated: Yes
Finished: Yes
Enclosed: Yes
Contiguous: Yes
Permitted: Yes
Wet space: No
Addition: No
Conversion: No

11 Floor 2 - Living Room



Dimensions: 18'11" x 12'11"
Area: 245 sq. ft
Counted as living area: Yes

Heated: Yes
Finished: Yes
Enclosed: Yes
Contiguous: Yes
Permitted: Yes
Wet space: No
Addition: No
Conversion: No

14 St James Road, Cheektowaga, Erie County, New York, United States, 14225

12 Floor 2 - Primary Bedroom



Dimensions: 12'8" x 13'1"
Area: 144 sq. ft
Counted as living area: Yes

Heated: Yes
Finished: Yes
Enclosed: Yes
Contiguous: Yes
Permitted: Yes
Wet space: No
Addition: No
Conversion: No

13 Floor 3 - Hall



Dimensions: 3'6" x 3'6"
Area: 39 sq. ft
Counted as living area: Yes

Heated: Yes
Finished: Yes
Enclosed: Yes
Contiguous: Yes
Permitted: Yes
Wet space: No
Addition: No
Conversion: No

14 Floor 3 - Hall



Dimensions: 3'3" x 6'0"
Area: 55 sq. ft
Counted as living area: Yes

Heated: Yes
Finished: Yes
Enclosed: Yes
Contiguous: Yes
Permitted: Yes
Wet space: No
Addition: No
Conversion: No

14 St James Road, Cheektowaga, Erie County, New York, United States, 14225

15 Floor 3 - Living Room



Dimensions: 18'11" x 14'6"
Area: 268 sq. ft
Counted as living area: Yes

Heated: Yes
Finished: Yes
Enclosed: Yes
Contiguous: Yes
Permitted: Yes
Wet space: No
Addition: No
Conversion: No

16 Floor 3 - Hall



Dimensions: 8'2" x 7'11"
Area: 36 sq. ft
Counted as living area: Yes

Heated: Yes
Finished: Yes
Enclosed: Yes
Contiguous: Yes
Permitted: Yes
Wet space: No
Addition: No
Conversion: No

17 Floor 3 - Primary Bedroom



Dimensions: 12'8" x 13'1"
Area: 144 sq. ft
Counted as living area: Yes

Heated: Yes
Finished: Yes
Enclosed: Yes
Contiguous: Yes
Permitted: Yes
Wet space: No
Addition: No
Conversion: No

18 Floor 3 - Dining Area



Dimensions: 13'4" x 10'10"
Area: 144 sq. ft
Counted as living area: Yes

Heated: Yes
Finished: Yes
Enclosed: Yes
Contiguous: Yes
Permitted: Yes
Wet space: No
Addition: No
Conversion: No

19 Floor 3 - Bath



Dimensions: 6'9" x 7'7"
Area: 46 sq. ft
Counted as living area: Yes

Heated: Yes
Finished: Yes
Enclosed: Yes
Contiguous: Yes
Permitted: Yes
Wet space: Yes
Addition: No
Conversion: No

20 Floor 3 - Bedroom



Dimensions: 9'10" x 13'1"
Area: 129 sq. ft
Counted as living area: Yes

Heated: Yes
Finished: Yes
Enclosed: Yes
Contiguous: Yes
Permitted: Yes
Wet space: No
Addition: No
Conversion: No

21 Floor 3 - Balcony



Dimensions: 8'5" x 5'0"
Area: 39 sq. ft
Counted as living area: No

Heated: No
Finished: No
Enclosed: No
Contiguous: Yes
Permitted: Yes
Wet space: No
Addition: No
Conversion: No

22 Floor 3 - Kitchen



Dimensions: 11'2" x 12'5"
Area: 119 sq. ft
Counted as living area: Yes

Heated: Yes
Finished: Yes
Enclosed: Yes
Contiguous: Yes
Permitted: Yes
Wet space: No
Addition: No
Conversion: No