

2532 Monet Terrace , Charlotte , Nc, USA

Gross Living Area: 4178 sq. ft



Space

Area (sq. ft)

Calculation Coordinate Polygon Area Algorithm using inches

FLOOR 1
(Living area)

2385

$$\begin{aligned}
 & -((711.8 + 711.8) * (65.7 - 519.8) + (711.8 + 557.7) * (519.8 - 519.8) + (557.7 + 557.7) * (519.8 - \\
 & 616.4) + (557.7 + 410.3) * (616.4 - 616.4) + (410.3 + 410.3) * (616.4 - 742.2) + (410.3 + 440.5) * \\
 & (742.2 - 742.2) + (440.5 + 440.5) * (742.2 - 876) + (440.5 + 434.6) * (876 - 876) + (434.6 + 434.6) * \\
 & (876 - 872.3) + (434.6 + 430.5) * (872.3 - 876.5) + (430.5 + 329.9) * (876.5 - 876.5) + (329.9 + \\
 & 329.9) * (876.5 - 814.3) + (329.9 + 233.6) * (814.3 - 814.3) + (233.6 + 233.6) * (814.3 - 750.9) + \\
 & (233.6 + 88) * (750.9 - 750.9) + (88 + 88) * (750.9 - 704.6) + (88 + 71.2) * (704.6 - 704.6) + (71.2 \\
 & + 71.2) * (704.6 - 611) + (71.2 + 88) * (611 - 611) + (88 + 88) * (611 - 122.4) + (88 + 232.6) *
 \end{aligned}$$

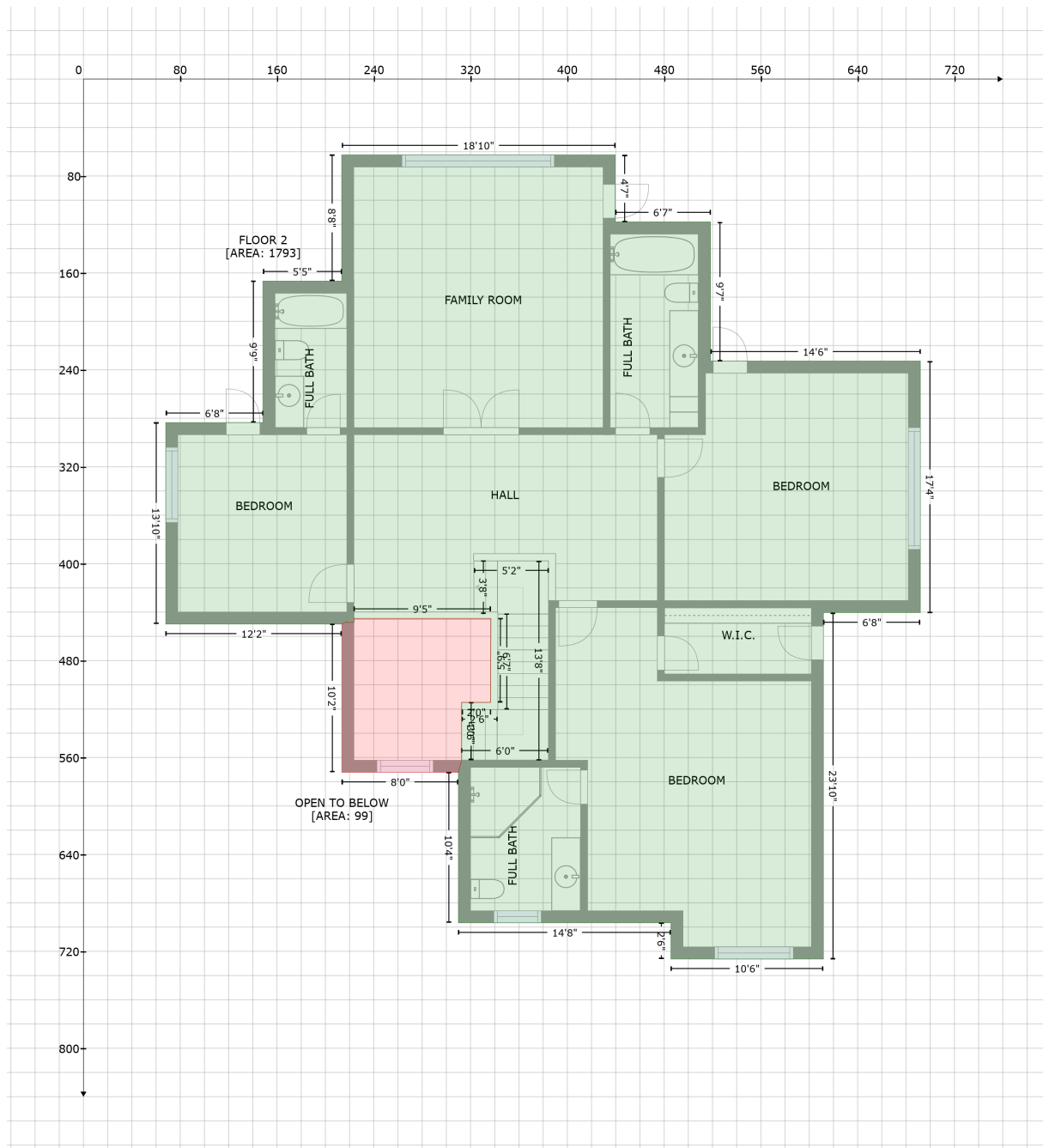
2532 Monet Terrace , Charlotte , Nc, USA

Gross Living Area: 4178 sq. ft

Space	Area (sq. ft)	Calculation <small>Coordinate Polygon Area Algorithm using inches</small>
		$(122.4 - 122.4) + (232.6 + 236.7) * (122.4 - 126.6) + (236.7 + 236.7) * (126.6 - 123.4) + (236.7 + 242.6) * (123.4 - 123.4) + (242.6 + 242.6) * (123.4 - 241.2) + (242.6 + 479.3) * (241.2 - 241.2) + (479.3 + 479.3) * (241.2 - 65.7) + (479.3 + 711.8) * (65.7 - 65.7) * 0.5 * 0.00694$
GARAGE (Non-living area)	693	$-((711.8 + 711.8) * (519.8 - 906.3) + (711.8 + 624.5) * (906.3 - 906.3) + (624.5 + 624.5) * (906.3 - 924.1) + (624.5 + 506.3) * (924.1 - 924.1) + (506.3 + 506.3) * (924.1 - 906.3) + (506.3 + 430.5) * (906.3 - 906.3) + (430.5 + 430.5) * (906.3 - 876.5) + (430.5 + 434.6) * (876.5 - 872.3) + (434.6 + 434.6) * (872.3 - 876) + (434.6 + 440.5) * (876 - 876) + (440.5 + 440.5) * (876 - 742.2) + (440.5 + 410.3) * (742.2 - 742.2) + (410.3 + 410.3) * (742.2 - 616.4) + (410.3 + 557.7) * (616.4 - 616.4) + (557.7 + 557.7) * (616.4 - 519.8) + (557.7 + 711.8) * (519.8 - 519.8) * 0.5 * 0.00694$
SCREENED PORCH (Non-living area)	272	$-((479.3 + 479.3) * (75.7 - 241.2) + (479.3 + 242.6) * (241.2 - 241.2) + (242.6 + 242.6) * (241.2 - 123.4) + (242.6 + 242.6) * (123.4 - 75.7) + (242.6 + 479.3) * (75.7 - 75.7) * 0.5 * 0.00694$

2532 Monet Terrace , Charlotte , Nc, USA

Gross Living Area: 4178 sq. ft



Space	Area (sq. ft)	Calculation
FLOOR 2 (Living area)	1793	Coordinate Polygon Area Algorithm using inches $-((439.5 + 439.5) * (62.6 - 117.9) + (439.5 + 518.3) * (117.9 - 117.9) + (518.3 + 518.3) * (117.9 - 232.8) + (518.3 + 691.8) * (232.8 - 232.8) + (691.8 + 691.8) * (232.8 - 440.4) + (691.8 + 611.7) * (440.4 - 440.4) + (611.7 + 611.7) * (440.4 - 726.3) + (611.7 + 485.6) * (726.3 - 726.3) + (485.6 + 485.6) * (726.3 - 696.5) + (485.6 + 309.9) * (696.5 - 696.5) + (309.9 + 309.9) * (696.5 - 572.3) + (309.9 + 312.6) * (572.3 - 562.3) + (312.6 + 312.6) * (562.3 - 514.6) + (312.6 + 336.6) * (514.6 - 514.6) + (336.6 + 336.9) * (514.6 - 445.2) + (336.9 + 223.6) * (445.2 - 445.2) + (223.6 + 223.6) * (445.2 - 448.6) + (223.6 + 217.7) * (448.6 - 448.6) + (217.7 + 217.7) * (448.6 - 447.8) + (217.7 +$

2532 Monet Terrace , Charlotte , Nc, USA

Gross Living Area: 4178 sq. ft

Space	Area (sq. ft)	Calculation <small>Coordinate Polygon Area Algorithm using inches</small>
OPEN TO BELOW (Non-living area)	99	$\begin{aligned} &213.6 * (447.8 - 449.9) + (213.6 + 68) * (449.9 - 449.9) + (68 + 68) * (449.9 - 283.6) + (68 + \\ &148.4) * (283.6 - 283.6) + (148.4 + 148.4) * (283.6 - 166.7) + (148.4 + 213.5) * (166.7 - 166.7) + \\ &(213.5 + 213.5) * (166.7 - 62.6) + (213.5 + 439.5) * (62.6 - 62.6) * 0.5 * 0.00694 \\ &-((336.9 + 336.6) * (445.2 - 514.6) + (336.6 + 312.6) * (514.6 - 514.6) + (312.6 + 312.6) * (514.6 - \\ &562.3) + (312.6 + 309.9) * (562.3 - 572.3) + (309.9 + 213.6) * (572.3 - 572.3) + (213.6 + 213.6) * \\ &(572.3 - 449.9) + (213.6 + 217.7) * (449.9 - 447.8) + (217.7 + 217.7) * (447.8 - 448.6) + (217.7 + \\ &223.6) * (448.6 - 448.6) + (223.6 + 223.6) * (448.6 - 445.2) + (223.6 + 336.9) * (445.2 - 445.2)) * \\ &0.5 * 0.00694 \end{aligned}$