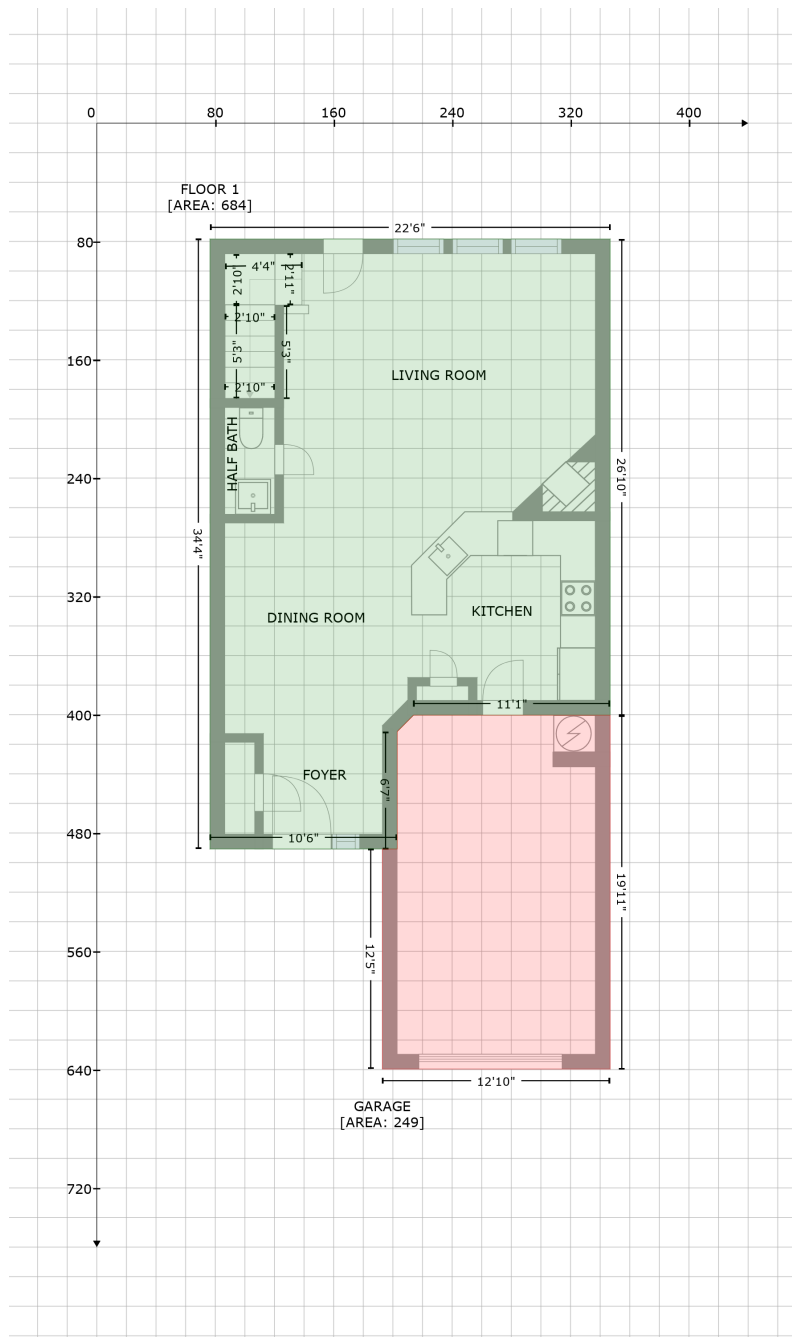


2440 Kensington Station, Charlotte , Nc, USA

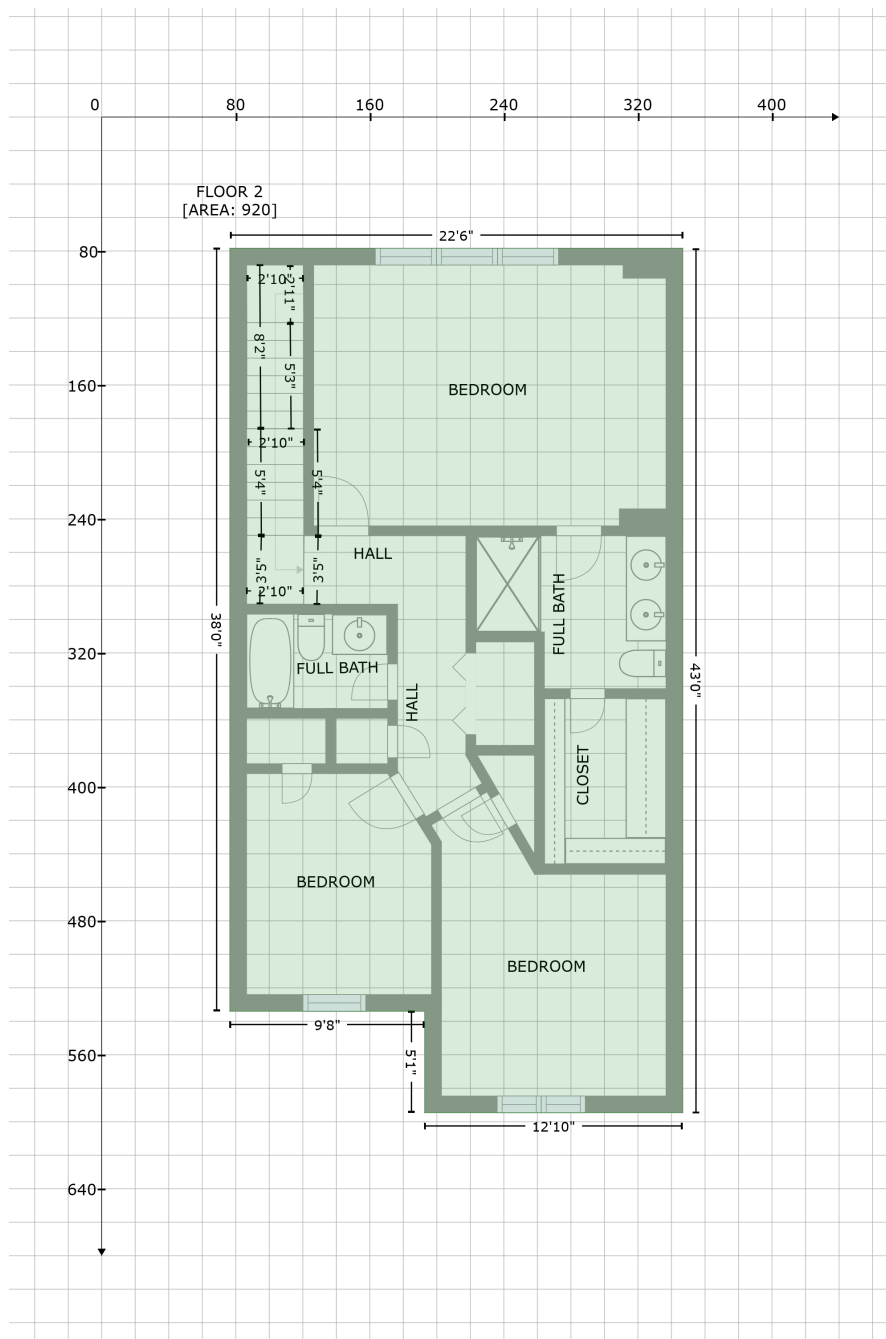
Gross Living Area: 1604 sq. ft



Space	Area (sq. ft)	Calculation <small>Coordinate Polygon Area Algorithm using inches</small>
FLOOR 1 (Living area)	684	$-\left((346.8 + 346.8) * (78.3 - 400.3) + (346.8 + 213.9) * (400.3 - 400.3) + (213.9 + 202.9) * (400.3 - 411.4) + (202.9 + 202.9) * (411.4 - 490.8) + (202.9 + 76.5) * (490.8 - 490.8) + (76.5 + 76.5) * (490.8 - 78.3) + (76.5 + 346.8) * (78.3 - 78.3)\right) * 0.5 * 0.00694$
GARAGE (Non-living area)	249	$-\left((346.8 + 346.8) * (400.3 - 639.6) + (346.8 + 192.9) * (639.6 - 639.6) + (192.9 + 192.9) * (639.6 - 490.8) + (192.9 + 202.9) * (490.8 - 490.8) + (202.9 + 202.9) * (490.8 - 411.4) + (202.9 + 213.9) * (411.4 - 400.3) + (213.9 + 346.8) * (400.3 - 400.3)\right) * 0.5 * 0.00694$

2440 Kensington Station, Charlotte , Nc, USA

Gross Living Area: 1604 sq. ft



Space

Area (sq. ft)

Calculation Coordinate Polygon Area Algorithm using inches

FLOOR 2
(Living area)

920

$-\left((346.8 + 346.8) * (78.3 - 594.6) + (346.8 + 192.7) * (594.6 - 594.6) + (192.7 + 192.7) * (594.6 - 534) + (192.7 + 76.5) * (534 - 534) + (76.5 + 76.5) * (534 - 78.3) + (76.5 + 346.8) * (78.3 - 78.3)\right) * 0.5 * 0.00694$