

# 1036 Squire Rd, Indian Land, SC, USA

Gross Living Area: 2968 sq. ft



Space	Area (sq. ft)	Calculation <small>Coordinate Polygon Area Algorithm using inches</small>
FLOOR 1 (Living area)	1817	$  \begin{aligned}  & -((462.1 + 462.1) * (75.1 - 122.4) + (462.1 + 645.2) * (122.4 - 122.4) + (645.2 + 645.2) * (122.4 - \\  & 474.1) + (645.2 + 402.2) * (474.1 - 474.1) + (402.2 + 402.2) * (474.1 - 573.7) + (402.2 + 392.2) * \\  & (573.7 - 583.7) + (392.2 + 321.9) * (583.7 - 583.7) + (321.9 + 321.9) * (583.7 - 634.5) + (321.9 + \\  & 146.1) * (634.5 - 634.5) + (146.1 + 146.1) * (634.5 - 583.7) + (146.1 + 62.2) * (583.7 - 583.7) + \\  & (62.2 + 62.2) * (583.7 - 122.4) + (62.2 + 239.8) * (122.4 - 122.4) + (239.8 + 239.8) * (122.4 - 75.1) \\  & + (239.8 + 462.1) * (75.1 - 75.1)) * 0.5 * 0.00694  \end{aligned}  $

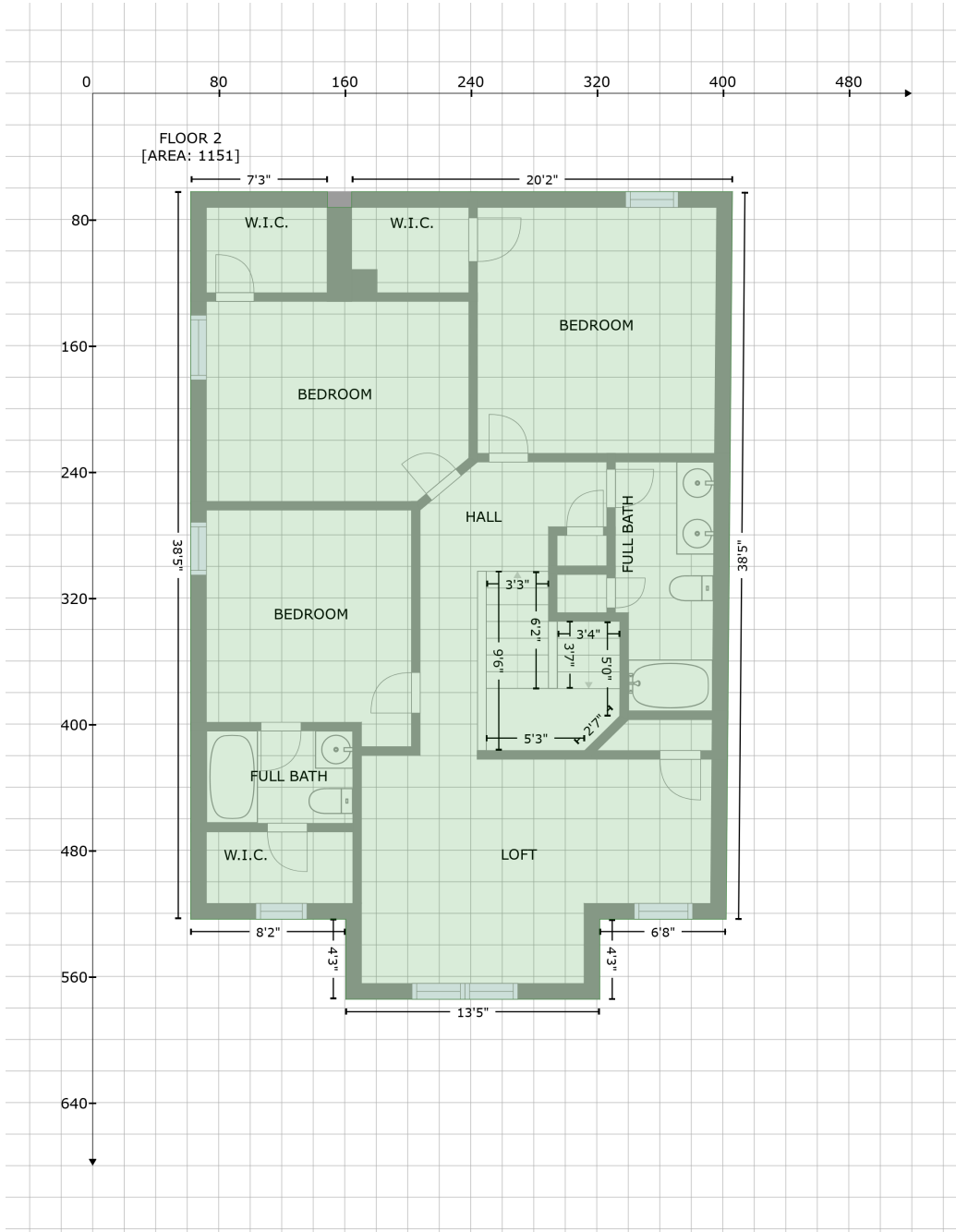
# 1036 Squire Rd, Indian Land, SC, USA

Gross Living Area: 2968 sq. ft

Space	Area (sq. ft)	Calculation <small>Coordinate Polygon Area Algorithm using inches</small>
GARAGE (Non-living area)	442	$-\left(\left(645.2 + 645.2\right) * \left(474.1 - 729.4\right) + \left(645.2 + 390.9\right) * \left(729.4 - 729.4\right) + \left(390.9 + 392.2\right) * \left(729.4 - 583.7\right) + \left(392.2 + 402.2\right) * \left(583.7 - 573.7\right) + \left(402.2 + 402.2\right) * \left(573.7 - 474.1\right) + \left(402.2 + 645.2\right) * \left(474.1 - 474.1\right)\right) * 0.5 * 0.00694$

# 1036 Squire Rd, Indian Land, SC, USA

Gross Living Area: 2968 sq. ft



## Space

Area (sq. ft)

Calculation Coordinate Polygon Area Algorithm using inches

FLOOR 2  
(Living area)

1151

$$\begin{aligned}
 & -((149 + 149) * (62.4 - 72.4) + (149 + 164.4) * (72.4 - 72.4) + (164.4 + 164.4) * (72.4 - 62.4) + \\
 & (164.4 + 406.2) * (62.4 - 62.4) + (406.2 + 402.2) * (62.4 - 523.7) + (402.2 + 321.9) * (523.7 - \\
 & 523.7) + (321.9 + 321.9) * (523.7 - 574.5) + (321.9 + 160.6) * (574.5 - 574.5) + (160.6 + 160.6) * \\
 & (574.5 - 523.7) + (160.6 + 62.2) * (523.7 - 523.7) + (62.2 + 62.2) * (523.7 - 62.4) + (62.2 + 149) * \\
 & (62.4 - 62.4)) * 0.5 * 0.00694
 \end{aligned}$$