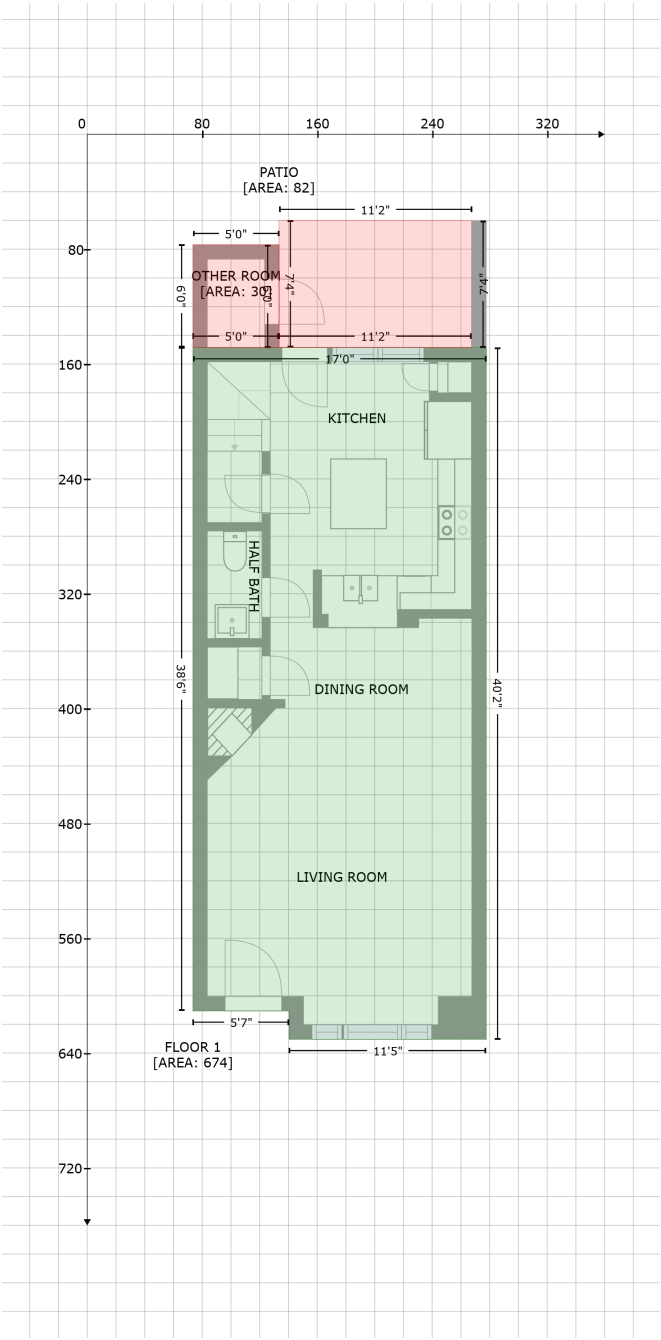


# 816 Bryant St, Raleigh, NC, United States

Gross Living Area: 1354 sq. ft



Space	Area (sq. ft)	Calculation
FLOOR 1 (Living area)	674	$-\left((277.6 + 277.6) * (148.5 - 630.4) + (277.6 + 140.5) * (630.4 - 630.4) + (140.5 + 140.5) * (630.4 - 610.6) + (140.5 + 73.5) * (610.6 - 610.6) + (73.5 + 73.5) * (610.6 - 148.5) + (73.5 + 277.6) * (148.5 - 148.5)\right) * 0.5 * 0.00694$
PATIO (Non-living area)	82	$-\left((267.6 + 267.5) * (60.2 - 148.5) + (267.5 + 133.4) * (148.5 - 148.5) + (133.4 + 133.4) * (148.5 - 60.2) + (133.4 + 267.6) * (60.2 - 60.2)\right) * 0.5 * 0.00694$
OTHER ROOM	30	$-\left((133.4 + 133.4) * (76.9 - 148.5) + (133.4 + 73.5) * (148.5 - 148.5) + (73.5 + 73.5) * (148.5 - 148.5)\right) * 0.5 * 0.00694$

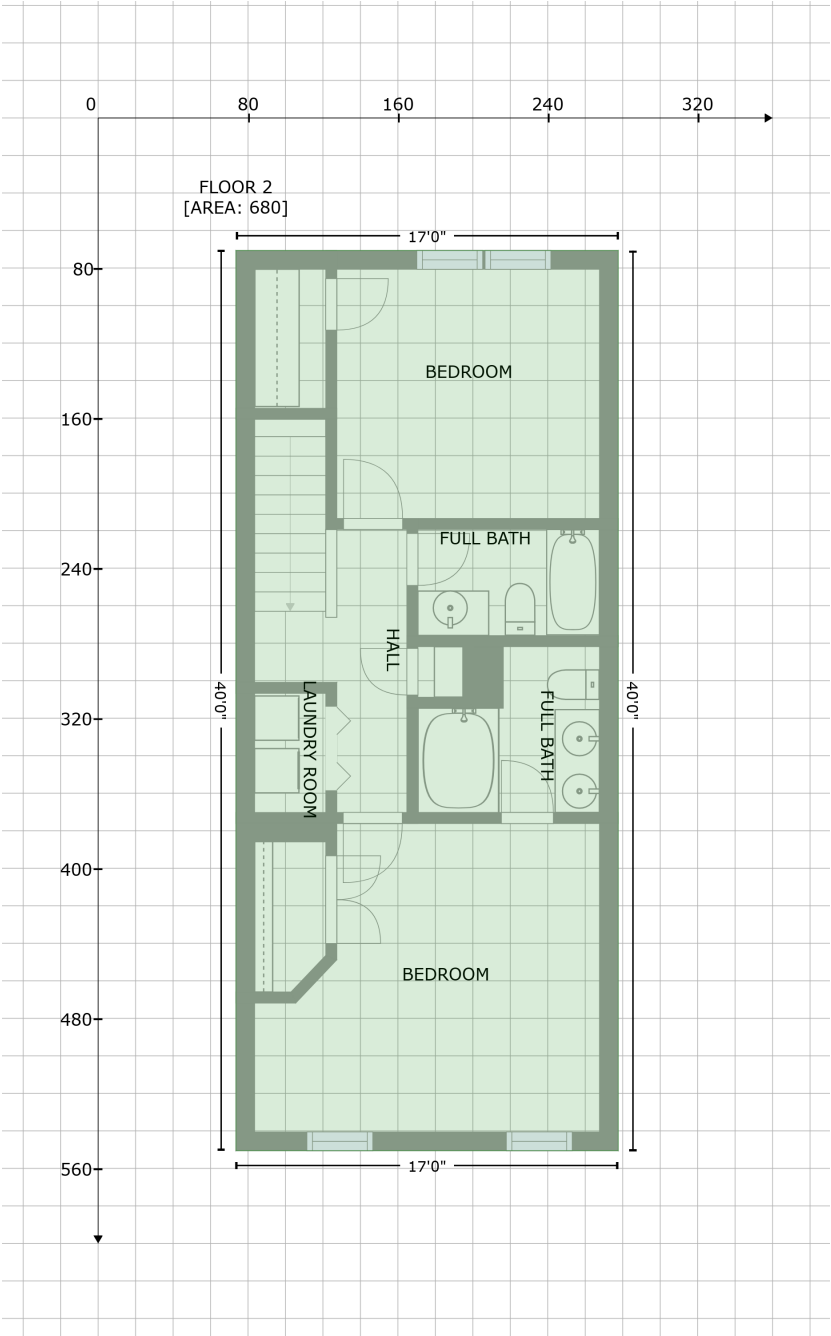
# 816 Bryant St, Raleigh, NC, United States

Gross Living Area: 1354 sq. ft

Space	Area (sq. ft)	Calculation
(Non-living area)		$76.9 + (73.5 + 133.4) * (76.9 - 76.9) * 0.5 * 0.00694$

816 Bryant St, Raleigh, NC, United States

Gross Living Area: 1354 sq. ft



Space	Area (sq. ft)	Calculation
FLOOR 2 (Living area)	680	Coordinate Polygon Area Algorithm using inches $-((277.6 + 277.6) * (70.7 - 550.6) + (277.6 + 73.5) * (550.6 - 550.6) + (73.5 + 73.5) * (550.6 - 70.7) + (73.5 + 277.6) * (70.7 - 70.7)) * 0.5 * 0.00694$