

# 260 Waters Edge Ln, Semora, NC, USA

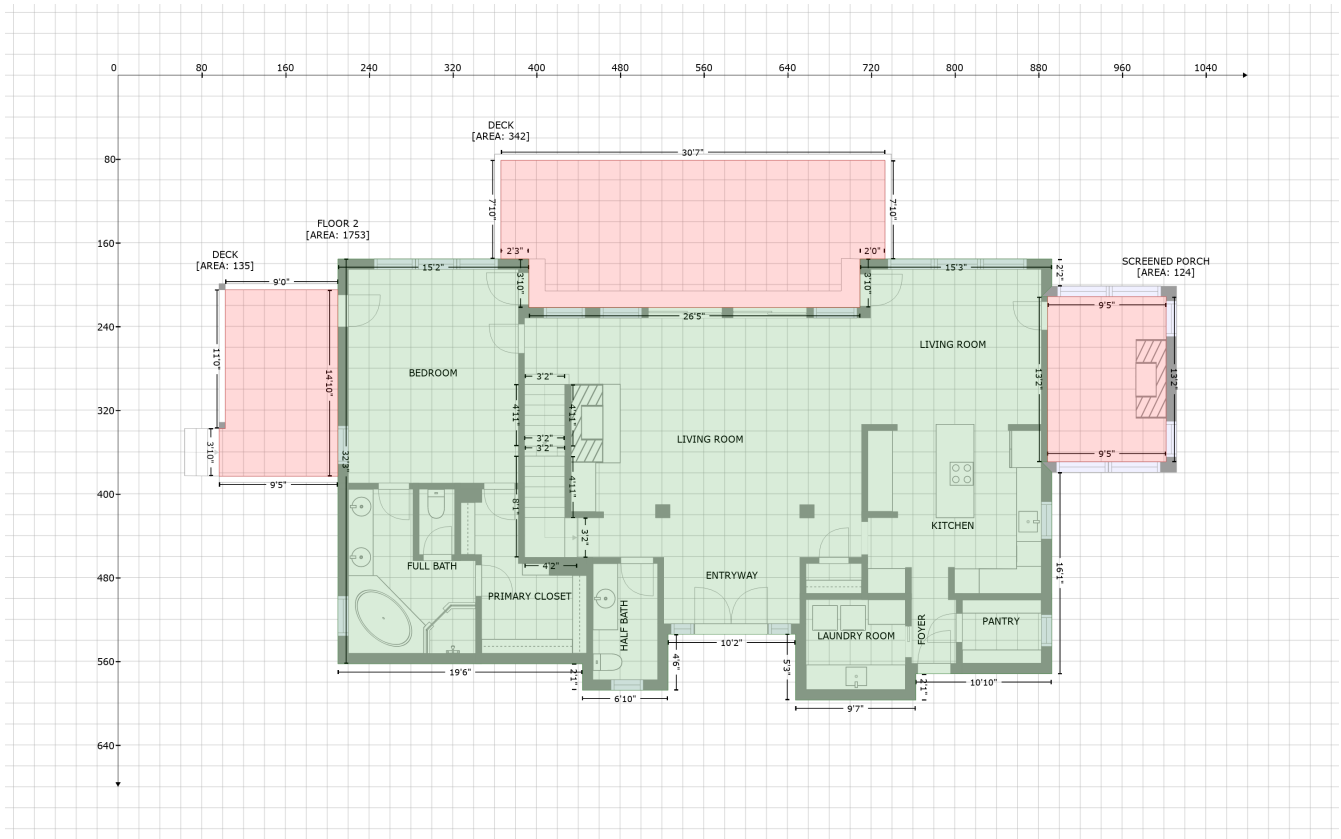
Gross Living Area: 4462 sq. ft



Space	Area (sq. ft)	Calculation <small>Coordinate Polygon Area Algorithm using inches</small>
FLOOR 1 (Living area)	1704	$  \begin{aligned}  & -((252.7 + 252.7) * (75.6 - 122) + (252.7 + 564) * (122 - 122) + (564 + 564) * (122 - 75.6) + (564 + \\  & 748) * (75.6 - 75.6) + (748 + 748) * (75.6 - 455.1) + (748 + 621.8) * (455.1 - 455.1) + (621.8 + \\  & 621.8) * (455.1 - 478.1) + (621.8 + 507.8) * (478.1 - 478.1) + (507.8 + 507.8) * (478.1 - 434.2) + \\  & (507.8 + 385.9) * (434.2 - 434.2) + (385.9 + 385.9) * (434.2 - 478.1) + (385.9 + 272.2) * (478.1 - \\  & 478.1) + (272.2 + 272.2) * (478.1 - 455.2) + (272.2 + 70.2) * (455.2 - 455.2) + (70.2 + 70.2) * \\  & (455.2 - 75.6) + (70.2 + 252.7) * (75.6 - 75.6)) * 0.5 * 0.00694  \end{aligned}  $

# 260 Waters Edge Ln, Semora, NC, USA

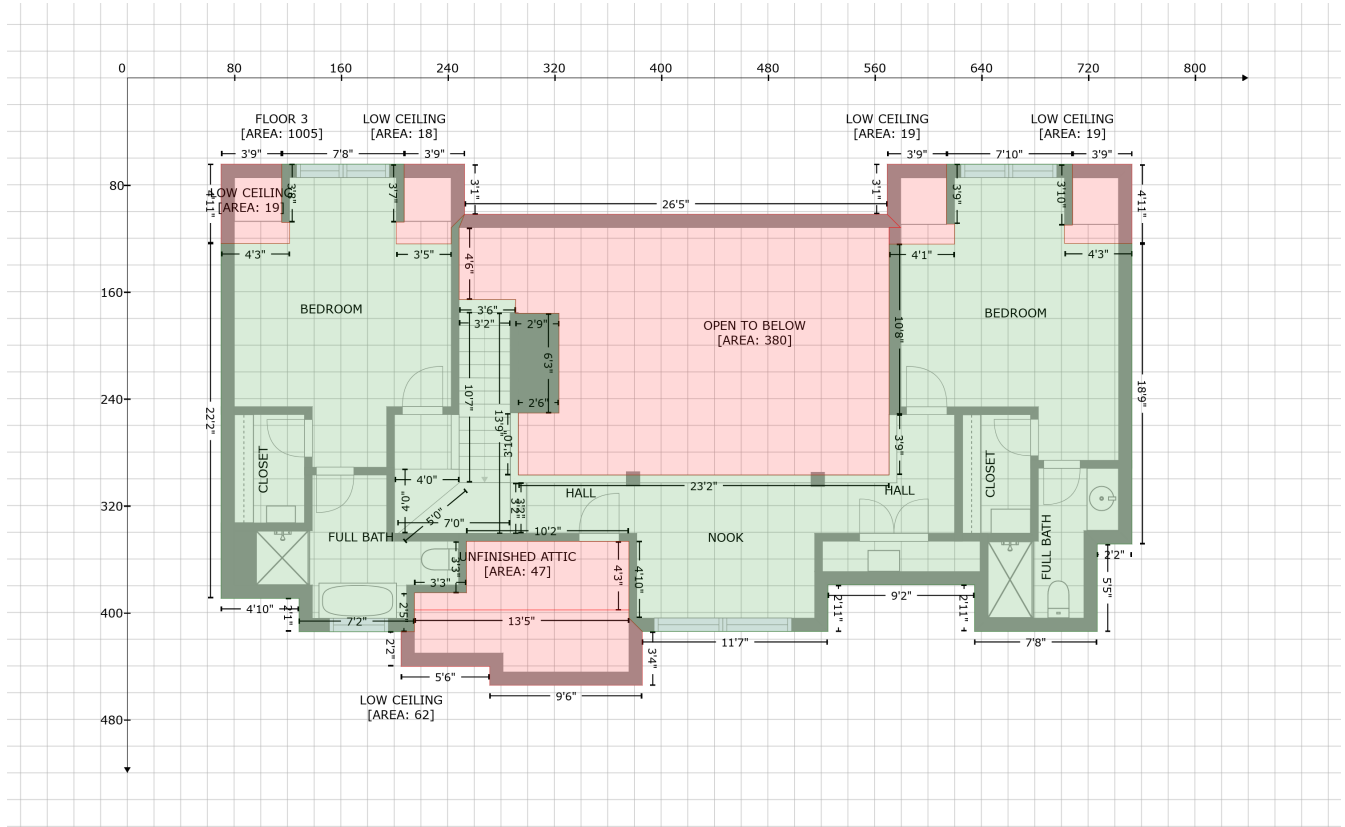
Gross Living Area: 4462 sq. ft



Space	Area (sq. ft)	Calculation
FLOOR 2 (Living area)	1753	$-\left((392.7 + 392.7) * (175.6 - 222) + (392.7 + 709.4) * (222 - 222) + (709.4 + 709.4) * (222 - 175.6) + (709.4 + 892.8) * (175.6 - 175.6) + (892.8 + 892.8) * (175.6 - 201.6) + (892.8 + 882.8) * (201.6 - 211.6) + (882.8 + 888.7) * (211.6 - 211.6) + (888.7 + 888.7) * (211.6 - 369.4) + (888.7 + 882.8) * (369.4 - 369.4) + (882.8 + 892.8) * (369.4 - 379.4) + (892.8 + 892.8) * (379.4 - 572.1) + (892.8 + 762.8) * (572.1 - 572.1) + (762.8 + 762.8) * (572.1 - 597.2) + (762.8 + 647.8) * (597.2 - 597.2) + (647.8 + 647.8) * (597.2 - 534.2) + (647.8 + 525.9) * (534.2 - 534.2) + (525.9 + 525.9) * (534.2 - 587.7) + (525.9 + 444) * (587.7 - 587.7) + (444 + 444) * (587.7 - 562.5) + (444 + 210.2) * (562.5 - 562.5) + (210.2 + 210.2) * (562.5 - 175.6) + (210.2 + 392.7) * (175.6 - 175.6)\right) * 0.5 * 0.00694$
DECK (Non-living area)	342	$-\left((733.3 + 733.3) * (81.4 - 175.6) + (733.3 + 709.4) * (175.6 - 175.6) + (709.4 + 709.4) * (175.6 - 222) + (709.4 + 392.7) * (222 - 222) + (392.7 + 392.7) * (222 - 175.6) + (392.7 + 366.1) * (175.6 - 175.6) + (366.1 + 366.1) * (175.6 - 81.4) + (366.1 + 733.3) * (81.4 - 81.4)\right) * 0.5 * 0.00694$
DECK (Non-living area)	135	$-\left((210.2 + 210.2) * (205.1 - 383.2) + (210.2 + 96.7) * (383.2 - 383.2) + (96.7 + 96.6) * (383.2 - 337.6) + (96.6 + 102.5) * (337.6 - 337.6) + (102.5 + 102.5) * (337.6 - 205.1) + (102.5 + 210.2) * (205.1 - 205.1)\right) * 0.5 * 0.00694$
SCREENED PORCH (Non-living area)	124	$-\left((1002.1 + 1002.1) * (211.6 - 369.4) + (1002.1 + 888.7) * (369.4 - 369.4) + (888.7 + 888.7) * (369.4 - 211.6) + (888.7 + 1002.1) * (211.6 - 211.6)\right) * 0.5 * 0.00694$

# 260 Waters Edge Ln, Semora, NC, USA

Gross Living Area: 4462 sq. ft



Space	Area (sq. ft)	Calculation
FLOOR 3 (Living area)	1005	Coordinate Polygon Area Algorithm using inches $-((207.4 + 207.4) * (64.6 - 107.9) + (207.4 + 201.5) * (107.9 - 107.9) + (201.5 + 201.5) * (107.9 - 124.2) + (201.5 + 242.7) * (124.2 - 124.2) + (242.7 + 242.7) * (124.2 - 112) + (242.7 + 252.7) * (112 - 102) + (252.7 + 248.6) * (102 - 112) + (248.6 + 248.6) * (112 - 165.8) + (248.6 + 290.9) * (165.8 - 165.8) + (290.9 + 290.7) * (165.8 - 176.1) + (290.7 + 323.5) * (176.1 - 176.1) + (323.5 + 323.5) * (176.1 - 250.8) + (323.5 + 293) * (250.8 - 250.8) + (293 + 293) * (250.8 - 297.1) + (293 + 570.9) * (297.1 - 297.1) + (570.9 + 570.9) * (297.1 - 252) + (570.9 + 570.8) * (252 - 252) + (570.8 + 570.8) * (252 - 124.3) + (570.8 + 619.9) * (124.3 - 124.3) + (619.9 + 619.9) * (124.3 - 109.4) + (619.9 + 613.9) * (109.4 - 109.4) + (613.9 + 613.9) * (109.4 - 64.6) + (613.9 + 708.2) * (64.6 - 64.6) + (708.2 + 708.2) * (64.6 - 110.1) + (708.2 + 702.3) * (110.1 - 110.1) + (702.3 + 702.3) * (110.1 - 123.8) + (702.3 + 752.8) * (123.8 - 123.8) + (752.8 + 752.8) * (123.8 - 348.8) + (752.8 + 726.8) * (348.8 - 348.8) + (726.8 + 726.8) * (348.8 - 414.2) + (726.8 + 634.9) * (414.2 - 414.2) + (634.9 + 634.9) * (414.2 - 379.3) + (634.9 + 525.1) * (379.3 - 379.3) + (525.1 + 525.1) * (379.3 - 414.2) + (525.1 + 385.9) * (414.2 - 414.2) + (385.9 + 375.9) * (414.2 - 404.2) + (375.9 + 375.9) * (404.2 - 346.7) + (375.9 + 254.2) * (346.7 - 346.7) + (254.2 + 254.2) * (346.7 - 385.3) + (254.2 + 215.2) * (385.3 - 385.3) + (215.2 + 215.2) * (385.3 - 414.3) + (215.2 + 128.7) * (414.3 - 414.3) + (128.7 + 128.7) * (414.3 - 389.4) + (128.7 + 70.2) * (389.4 - 389.4) + (70.2 + 70.2) * (389.4 - 123.9) + (70.2 + 121.6) * (123.9 - 123.9) + (121.6 + 121.6) * (123.9 - 108.1) + (121.6 + 115.7) * (108.1 - 108.1) + (115.7 + 115.7) * (108.1 - 64.6) + (115.7 + 207.4) * (64.6 - 64.6) * 0.5 * 0.00694$
LOW CEILING (Non-living area)	62	$-((375.9 + 375.9) * (398.1 - 404.2) + (375.9 + 385.9) * (404.2 - 414.2) + (385.9 + 385.9) * (414.2 - 454.5) + (385.9 + 271.6) * (454.5 - 454.5) + (271.6 + 271.6) * (454.5 - 440.4) + (271.6 + 205.2) * (440.4 - 440.4) + (205.2 + 205.2) * (440.4 - 414.3) + (205.2 + 215.2) * (414.3 - 414.3) + (215.2 + 215.2) * (414.3 - 398.1) + (215.2 + 375.9) * (398.1 - 398.1)) * 0.5 * 0.00694$
LOW CEILING (Non-living area)	19	$-((613.9 + 613.9) * (64.6 - 109.4) + (613.9 + 619.9) * (109.4 - 109.4) + (619.9 + 619.9) * (109.4 - 124.3) + (619.9 + 570.8) * (124.3 - 124.3) + (570.8 + 570.8) * (124.3 - 112) + (570.8 + 579.4) * (112 - 112) + (579.4 + 569.4) * (112 - 102) + (569.4 + 569.4) * (102 - 64.6) + (569.4 + 613.9) * (64.6 - 64.6) * 0.5 * 0.00694$

# 260 Waters Edge Ln, Semora, NC, USA

Gross Living Area: 4462 sq. ft

Space	Area (sq. ft)	Calculation <small>Coordinate Polygon Area Algorithm using inches</small>
		$(64.6 - 64.6) * 0.5 * 0.00694$
LOW CEILING (Non-living area)	18	$-((252.7 + 252.7) * (64.6 - 102) + (252.7 + 242.7) * (102 - 112) + (242.7 + 242.7) * (112 - 124.2) + (242.7 + 201.5) * (124.2 - 124.2) + (201.5 + 201.5) * (124.2 - 107.9) + (201.5 + 207.4) * (107.9 - 107.9) + (207.4 + 207.4) * (107.9 - 64.6) + (207.4 + 252.7) * (64.6 - 64.6)) * 0.5 * 0.00694$
LOW CEILING (Non-living area)	19	$-((115.7 + 115.7) * (64.6 - 108.1) + (115.7 + 121.6) * (108.1 - 108.1) + (121.6 + 121.6) * (108.1 - 123.9) + (121.6 + 70.2) * (123.9 - 123.9) + (70.2 + 70.2) * (123.9 - 64.6) + (70.2 + 115.7) * (64.6 - 64.6)) * 0.5 * 0.00694$
LOW CEILING (Non-living area)	19	$-((752.8 + 752.8) * (64.6 - 123.8) + (752.8 + 702.3) * (123.8 - 123.8) + (702.3 + 702.3) * (123.8 - 110.1) + (702.3 + 708.2) * (110.1 - 110.1) + (708.2 + 708.2) * (110.1 - 64.6) + (708.2 + 752.8) * (64.6 - 64.6)) * 0.5 * 0.00694$
UNFINISHED ATTIC (Non-living area)	47	$-((375.9 + 375.9) * (346.7 - 398.1) + (375.9 + 215.2) * (398.1 - 398.1) + (215.2 + 215.2) * (398.1 - 385.3) + (215.2 + 254.2) * (385.3 - 385.3) + (254.2 + 254.2) * (385.3 - 346.7) + (254.2 + 375.9) * (346.7 - 346.7)) * 0.5 * 0.00694$
OPEN TO BELOW (Non-living area)	380	$-((569.4 + 579.4) * (102 - 112) + (579.4 + 570.8) * (112 - 112) + (570.8 + 570.8) * (112 - 252) + (570.8 + 570.9) * (252 - 252) + (570.9 + 570.9) * (252 - 297.1) + (570.9 + 293) * (297.1 - 297.1) + (293 + 293) * (297.1 - 250.8) + (293 + 323.5) * (250.8 - 250.8) + (323.5 + 323.5) * (250.8 - 176.1) + (323.5 + 290.7) * (176.1 - 176.1) + (290.7 + 290.9) * (176.1 - 165.8) + (290.9 + 248.6) * (165.8 - 165.8) + (248.6 + 248.6) * (165.8 - 112) + (248.6 + 252.7) * (112 - 102) + (252.7 + 569.4) * (102 - 102)) * 0.5 * 0.00694$