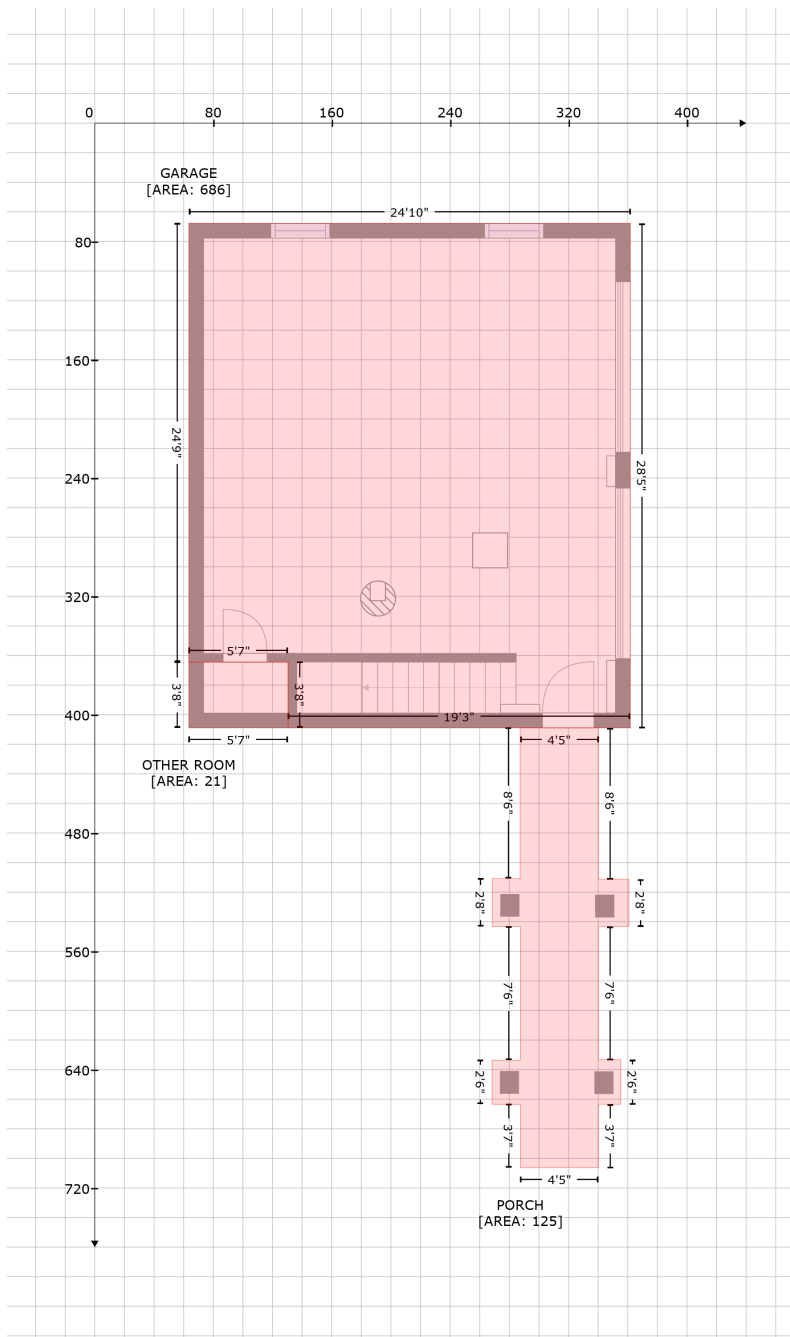


# 260 Waters Edge Ln (Garage), Semora, NC, USA

Gross Living Area: 534 sq. ft



Space	Area (sq. ft)	Calculation <small>Coordinate Polygon Area Algorithm using inches</small>
GARAGE (Non-living area)	686	$-((361.7 + 361.7) * (67.8 - 408.9) + (361.7 + 130.6) * (408.9 - 408.9) + (130.6 + 130.6) * (408.9 - 364.4) + (130.6 + 63.5) * (364.4 - 364.4) + (63.5 + 63.5) * (364.4 - 67.8) + (63.5 + 361.7) * (67.8 - 67.8)) * 0.5 * 0.00694$
PORCH (Non-living area)	125	$-((340.2 + 340.2) * (408.9 - 511.2) + (340.2 + 360.8) * (511.2 - 511.2) + (360.8 + 360.8) * (511.2 - 543.2) + (360.8 + 340.2) * (543.2 - 543.2) + (340.2 + 340.2) * (543.2 - 633.3) + (340.2 + 355.3) * (633.3 - 633.3) + (355.3 + 355.3) * (633.3 - 663.4) + (355.3 + 340.3) * (663.4 - 663.4) + (340.3 +$

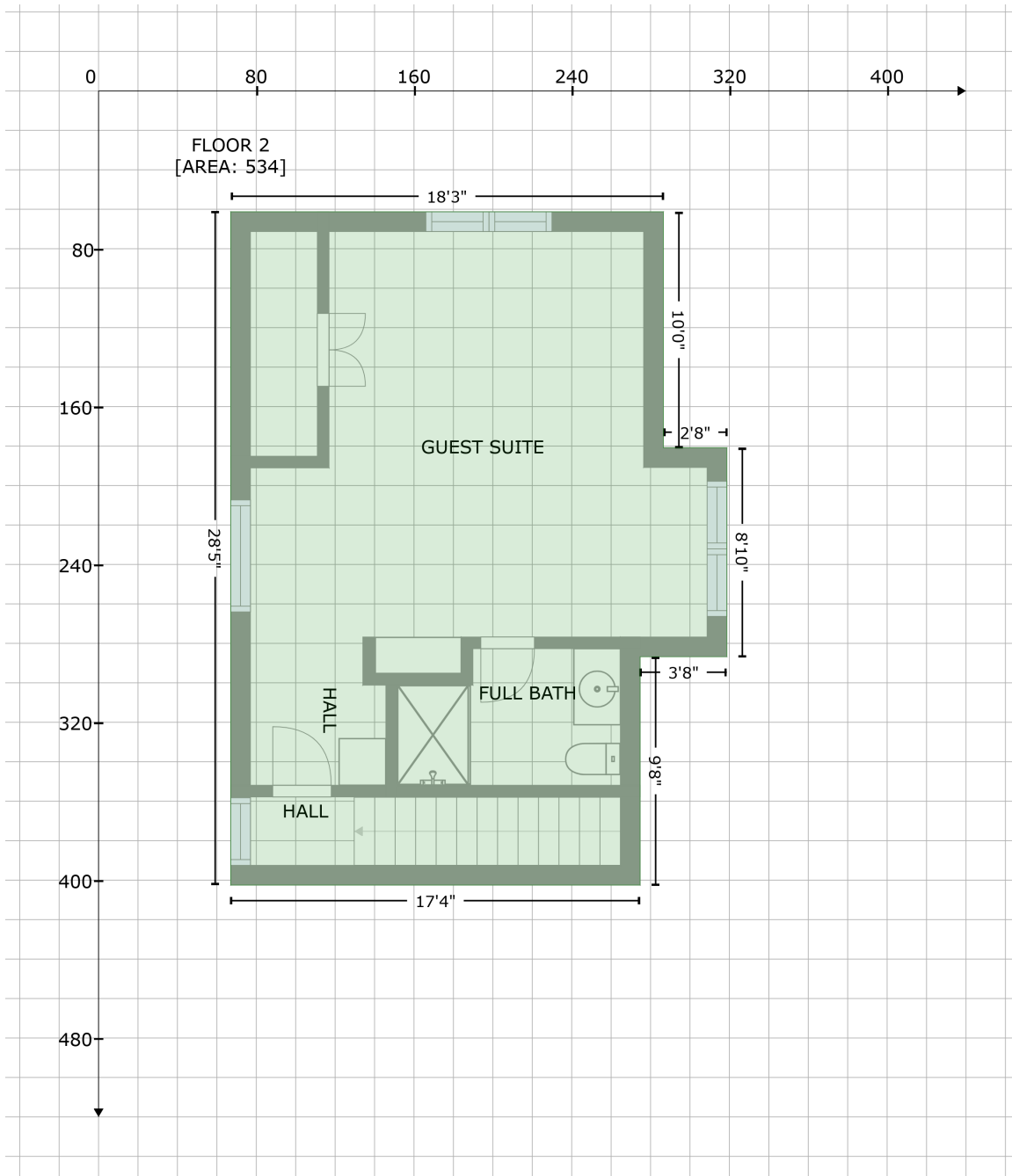
# 260 Waters Edge Ln (Garage), Semora, NC, USA

Gross Living Area: 534 sq. ft

Space	Area (sq. ft)	Calculation <small>Coordinate Polygon Area Algorithm using inches</small>
		$340.3 * (663.4 - 706.4) + (340.3 + 287.5) * (706.4 - 706.4) + (287.5 + 287.5) * (706.4 - 663.4) + (287.5 + 268.4) * (663.4 - 663.4) + (268.4 + 268.4) * (663.4 - 633.6) + (268.4 + 287.5) * (633.6 - 633.6) + (287.5 + 287.5) * (633.6 - 543.3) + (287.5 + 268.4) * (543.3 - 543.3) + (268.4 + 268.4) * (543.3 - 510.8) + (268.4 + 287.3) * (510.8 - 510.8) + (287.3 + 287.3) * (510.8 - 408.9) + (287.3 + 340.2) * (408.9 - 408.9) * 0.5 * 0.00694$
OTHER ROOM (Non-living area)	21	$-((130.6 + 130.6) * (364.4 - 408.9) + (130.6 + 63.5) * (408.9 - 408.9) + (63.5 + 63.5) * (408.9 - 364.4) + (63.5 + 130.6) * (364.4 - 364.4)) * 0.5 * 0.00694$

# 260 Waters Edge Ln (Garage), Semora, NC, USA

Gross Living Area: 534 sq. ft



## Space

Area (sq. ft)

Calculation Coordinate Polygon Area Algorithm using inches

FLOOR 2  
(Living area)

534

$-\left((286.5 + 286.5) * (61.3 - 180.8) + (286.5 + 318.7) * (180.8 - 180.8) + (318.7 + 318.7) * (180.8 - 286.8) + (318.7 + 274.7) * (286.8 - 286.8) + (274.7 + 274.7) * (286.8 - 402.5) + (274.7 + 67) * (402.5 - 402.5) + (67 + 67) * (402.5 - 61.3) + (67 + 286.5) * (61.3 - 61.3)\right) * 0.5 * 0.00694$