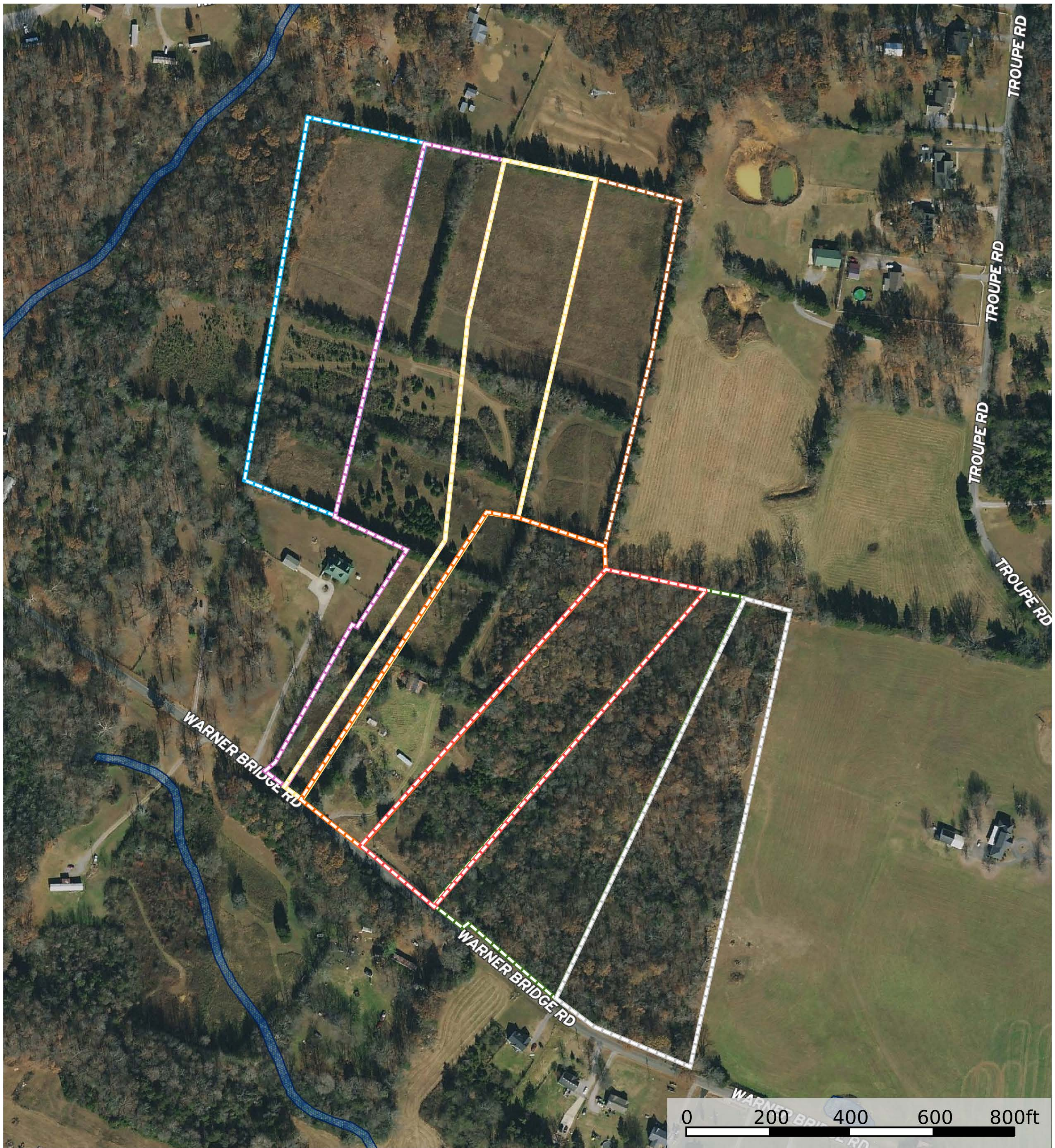
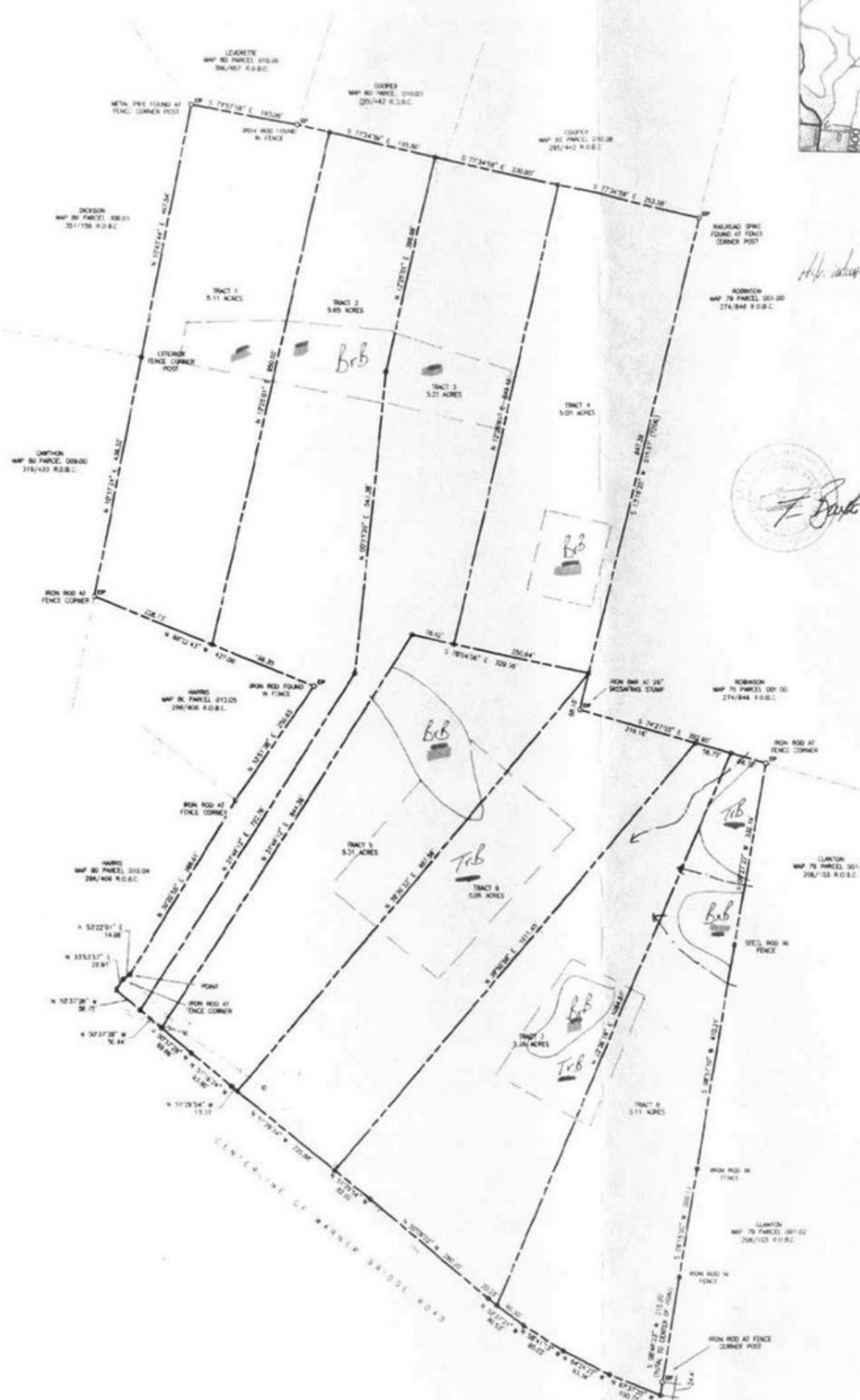


Tad Craig presents: 40+ Acres Warner Bridge Rd

Bedford County, Tennessee, 40 AC +/-



- Boundary 8
- Boundary 7
- Boundary 6
- Boundary 5
- Boundary 4
- Boundary 3
- Boundary 2
- Boundary 1
- Wetlands
- Riparian
- Water Wells



Soil Notes

Brb
 Broxton
 5-75h
 slope
 2-24' 75MH
 24-48' 75MH

Bb
 Bradwell
 5-75h
 slope
 2-24' 75MH
 24-48' 75MH

Trb
 Tarrant
 Tarrant rocky
 5-75h
 slope
 2-24' 75MH



JOB 940-02
 SHEET 1.0
 OF 1 SHEETS

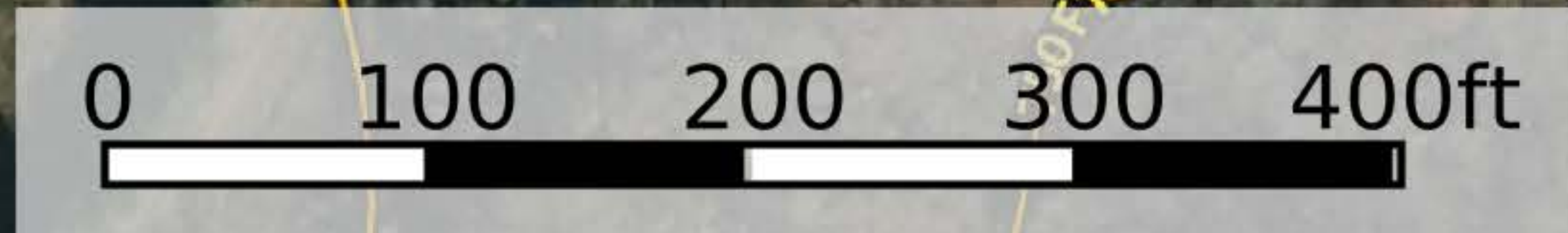
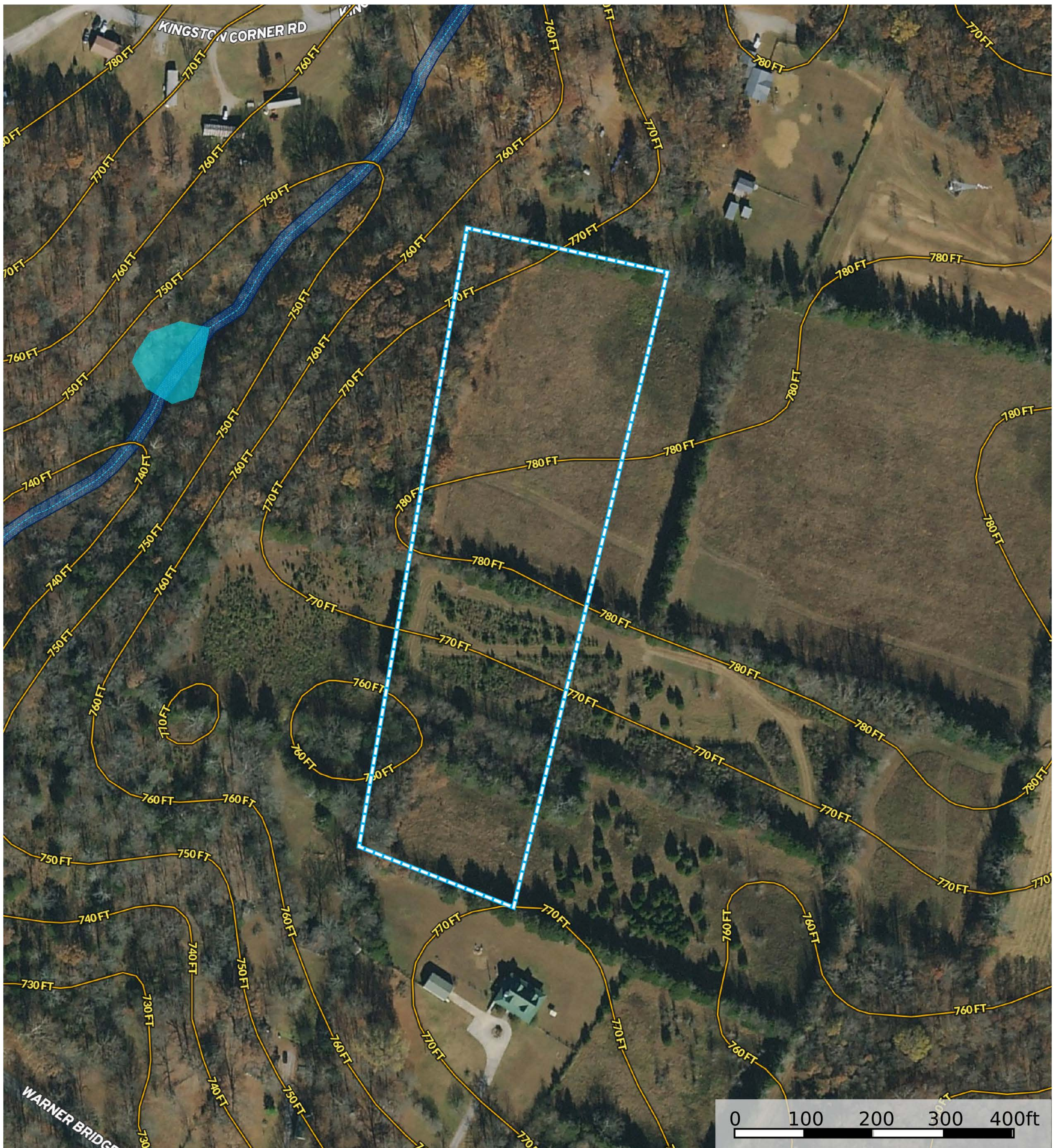
SOIL MAP
OF THE
CHRISTY WARNER PROPERTY
 Located on on the north side of Warner Bridge Road in the 7th (Seventh) Civil District of Bedford County, State of Tennessee

St. John ENGINEERING, LLC
 ENGINEERING • PLANNING • ENVIRONMENTAL CONSULTING
 123 JACKSON STREET
 MEMPHIS, TN 38103
 PHONE (901) 555-1234 FAX (901) 555-5678
 WWW.STJOHNENGINEERING.COM

NO	DATE	REVISION	DR.	CHK.

Tad Craig presents: 40+ Acres Warner Bridge Rd

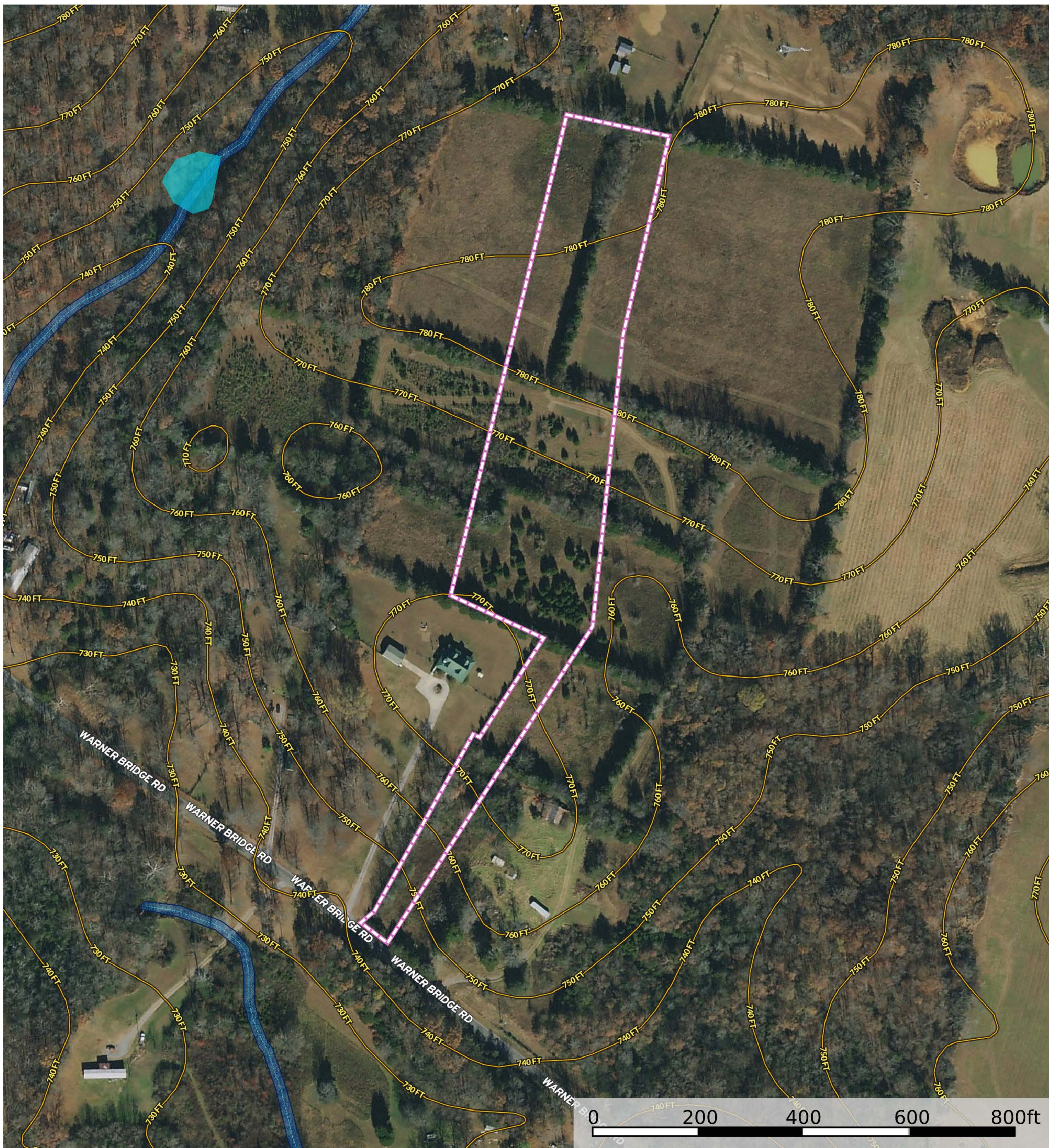
Bedford County, Tennessee, 40 AC +/-



- Boundary 1
- Wetlands
- Riparian
- Stream, Intermittent
- River/Creek
- Water Body
- Water Wells

Tad Craig presents: 40+ Acres Warner Bridge Rd

Bedford County, Tennessee, 40 AC +/-



- Boundary 2
- Wetlands
- Riparian
- Stream, Intermittent
- River/Creek
- Water Body
- Water Wells

Tad Craig presents: 40+ Acres Warner Bridge Rd

Bedford County, Tennessee, 40 AC +/-



- Boundary 3
- Wetlands
- Riparian
- Stream, Intermittent
- River/Creek
- Water Body
- Water Wells

Tad Craig presents: 40+ Acres Warner Bridge Rd

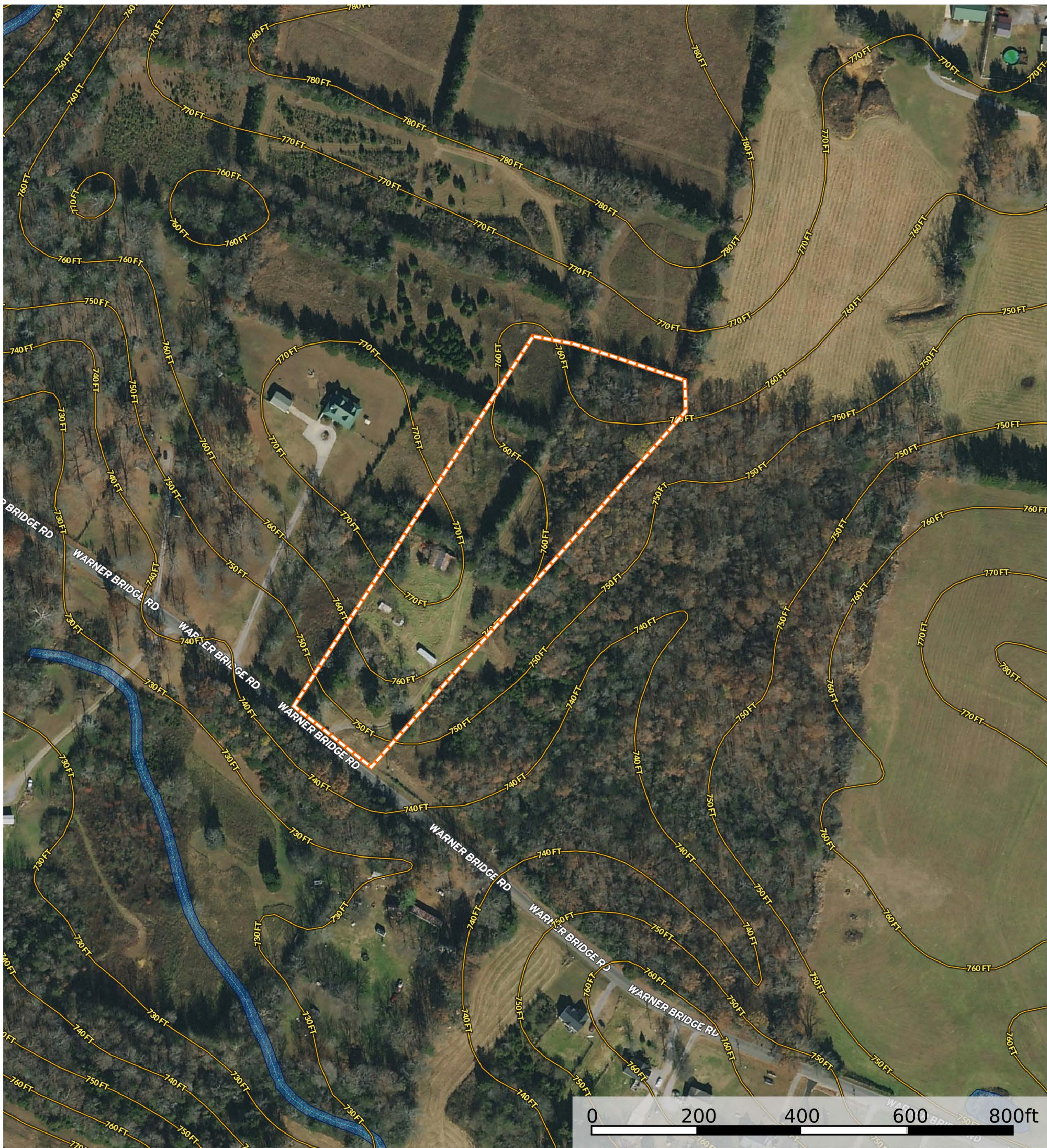
Bedford County, Tennessee, 40 AC +/-



- Boundary 8
- Wetlands
- Riparian
- Stream, Intermittent
- River/Creek
- Water Body
- Water Wells

Tad Craig presents: 40+ Acres Warner Bridge Rd

Bedford County, Tennessee, 40 AC +/-



- Boundary 4
- Wetlands
- Riparian
- Stream, Intermittent
- River/Creek
- Water Body
- Water Wells

Don Wright
P: 6155791491

don@donwrightdesigns.com

1409 Knoll Lane

The information contained herein was obtained from sources deemed to be reliable. MapRight Services makes no warranties or guarantees as to the completeness or accuracy thereof.

Tad Craig presents: 40+ Acres Warner Bridge Rd

Bedford County, Tennessee, 40 AC +/-



- Boundary 5
- Wetlands
- Riparian
- Stream, Intermittent
- River/Creek
- Water Body
- Water Wells

Tad Craig presents: 40+ Acres Warner Bridge Rd

Bedford County, Tennessee, 40 AC +/-



- Boundary 6
- Wetlands
- Riparian
- Stream, Intermittent
- River/Creek
- Water Body
- Water Wells

Tad Craig presents: 40+ Acres Warner Bridge Rd

Bedford County, Tennessee, 40 AC +/-



- Boundary 7
- Wetlands
- Riparian
- Stream, Intermittent
- River/Creek
- Water Body
- Water Wells