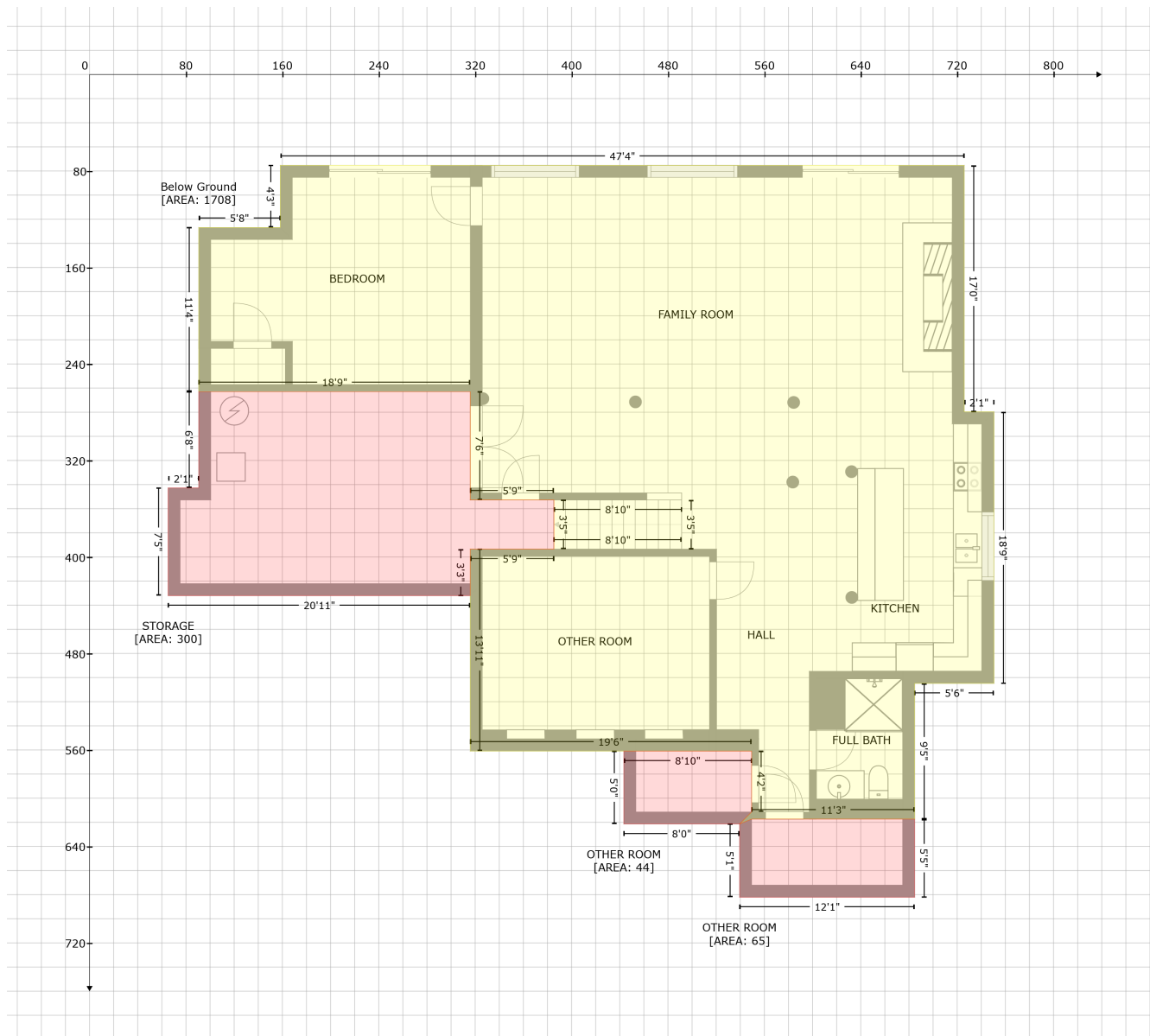


8155 Bay Pointe Dr, Brighton, MI, United States

Gross Living Area: 3025 sq. ft



Space	Area (sq. ft)	Calculation
Below Ground (Living area)	1708	Coordinate Polygon Area Algorithm using inches $-((725.9 + 725.9) * (75.3 - 279.7) + (725.9 + 750.6) * (279.7 - 279.7) + (750.6 + 750.6) * (279.7 - 504.8) + (750.6 + 684.7) * (504.8 - 504.8) + (684.7 + 684.7) * (504.8 - 617.3) + (684.7 + 549.4) * (617.3 - 617.3) + (549.4 + 539.4) * (617.3 - 621.4) + (539.4 + 549.4) * (621.4 - 611.4) + (549.4 + 549.4) * (611.4 - 560.9) + (549.4 + 315.9) * (560.9 - 560.9) + (315.9 + 315.9) * (560.9 - 393.5) + (315.9 + 385.4) * (393.5 - 393.5) + (385.4 + 385.4) * (393.5 - 352.8) + (385.4 + 315.9) * (352.8 - 352.8) + (315.9 + 315.9) * (352.8 - 263) + (315.9 + 90.6) * (263 - 263) + (90.6 + 90.6) * (263 - 126.8) + (90.6 + 158.3) * (126.8 - 126.8) + (158.3 + 158.3) * (126.8 - 75.3) + (158.3 + 725.9) * (75.3 - 75.3)) * 0.5 * 0.00694$
STORAGE (Non-living area)	300	$-((315.9 + 315.9) * (263 - 352.8) + (315.9 + 385.4) * (352.8 - 352.8) + (385.4 + 385.4) * (352.8 - 393.5) + (385.4 + 315.9) * (393.5 - 393.5) + (315.9 + 315.9) * (393.5 - 432.1) + (315.9 + 65.2) * (432.1 - 432.1) + (65.2 + 65.2) * (432.1 - 342.8) + (65.2 + 90.6) * (342.8 - 342.8) + (90.6 + 90.6) * (342.8 - 263) + (90.6 + 315.9) * (263 - 263)) * 0.5 * 0.00694$

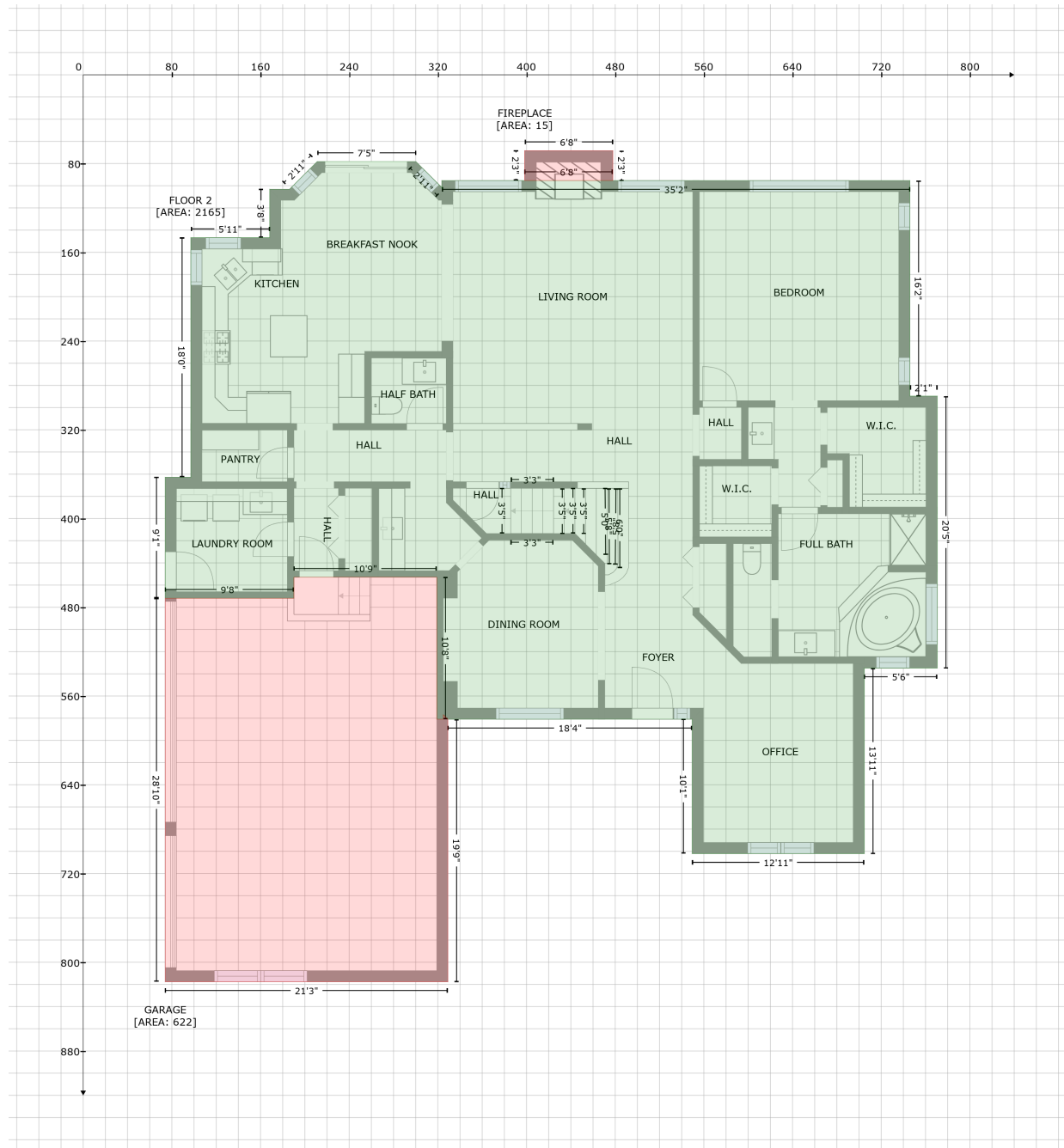
8155 Bay Pointe Dr, Brighton, MI, United States

Gross Living Area: 3025 sq. ft

Space	Area (sq. ft)	Calculation <small>Coordinate Polygon Area Algorithm using inches</small>
OTHER ROOM (Non-living area)	65	$-((684.7 + 684.7) * (617.3 - 682.1) + (684.7 + 539.4) * (682.1 - 682.1) + (539.4 + 539.4) * (682.1 - 621.4) + (539.4 + 549.4) * (621.4 - 617.3) + (549.4 + 684.7) * (617.3 - 617.3)) * 0.5 * 0.00694$
OTHER ROOM (Non-living area)	44	$-((549.4 + 549.4) * (560.9 - 611.4) + (549.4 + 539.4) * (611.4 - 621.4) + (539.4 + 443.4) * (621.4 - 621.4) + (443.4 + 443.4) * (621.4 - 560.9) + (443.4 + 549.4) * (560.9 - 560.9)) * 0.5 * 0.00694$

8155 Bay Pointe Dr, Brighton, MI, United States

Gross Living Area: 3025 sq. ft



Space	Area (sq. ft)	Calculation
FLOOR 2 (Living area)	2165	Coordinate Polygon Area Algorithm using inches $-((300.1 + 325) * (78.2 - 103.1) + (325 + 323.6) * (103.1 - 101.7) + (323.6 + 323.6) * (101.7 - 95.3) + (323.6 + 745.9) * (95.3 - 95.3) + (745.9 + 745.9) * (95.3 - 289.7) + (745.9 + 770.6) * (289.7 - 289.7) + (770.6 + 770.6) * (289.7 - 534.8) + (770.6 + 704.7) * (534.8 - 534.8) + (704.7 + 704.7) * (534.8 - 702.1) + (704.7 + 549.4) * (702.1 - 702.1) + (549.4 + 549.4) * (702.1 - 580.9) + (549.4 + 329) * (580.9 - 580.9) + (329 + 324.9) * (580.9 - 576.9) + (324.9 + 324.9) * (576.9 - 580.9) + (324.9 + 319) * (580.9 - 580.9) + (319 + 319) * (580.9 - 453) + (319 + 190.1) * (453 - 453) + (190.1 + 190.1) * (453 - 471.9) + (190.1 + 74) * (471.9 - 471.9) + (74 + 74) * (471.9 -$

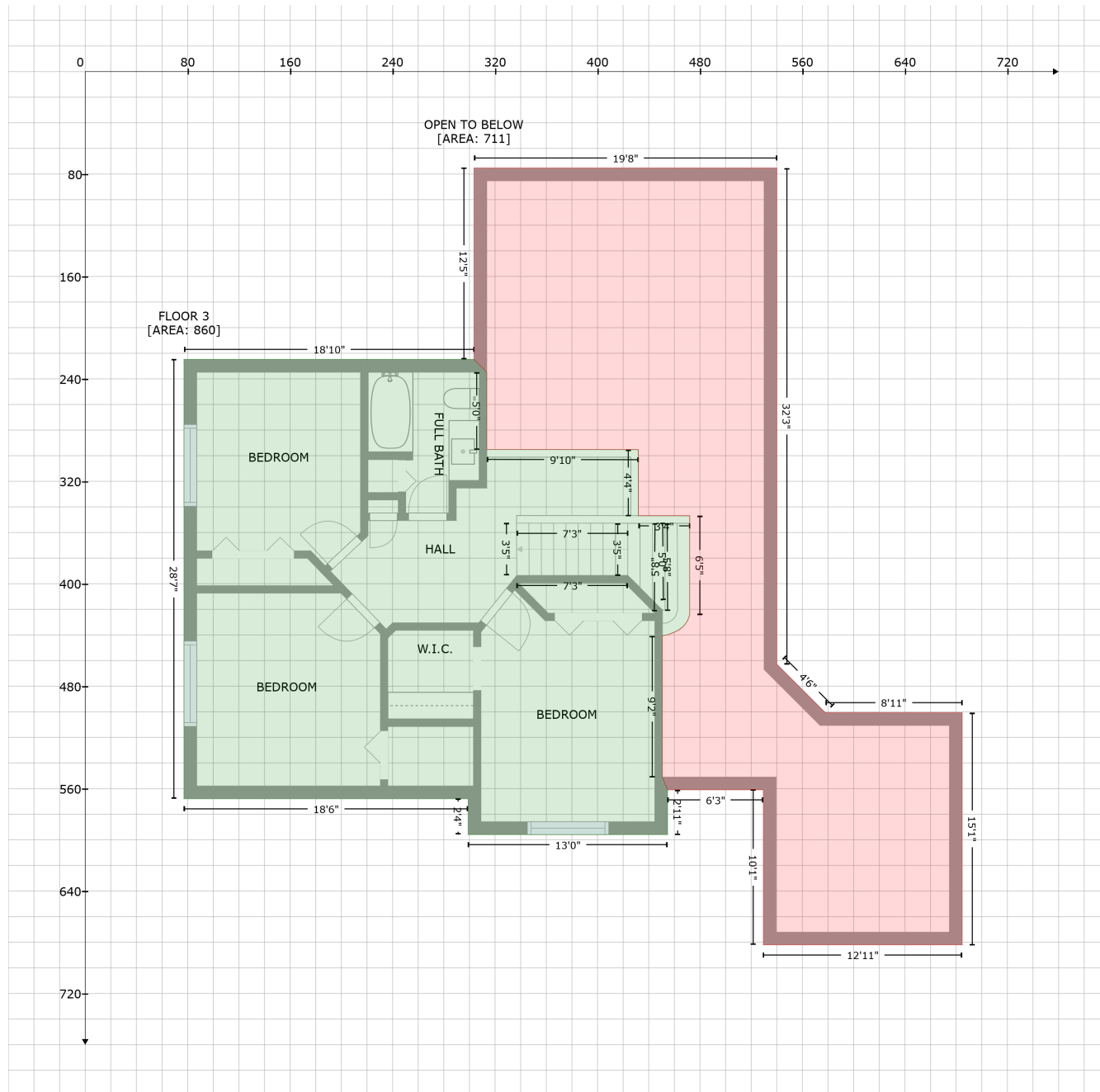
8155 Bay Pointe Dr, Brighton, MI, United States

Gross Living Area: 3025 sq. ft

Space	Area (sq. ft)	Calculation <small>Coordinate Polygon Area Algorithm using inches</small>
		$362.8 + (74 + 97.1) * (362.8 - 362.8) + (97.1 + 97.1) * (362.8 - 146.8) + (97.1 + 168.3) * (146.8 - 146.8) + (168.3 + 168.3) * (146.8 - 103.1) + (168.3 + 186.3) * (103.1 - 103.1) + (186.3 + 211.2) * (103.1 - 78.2) + (211.2 + 300.1) * (78.2 - 78.2) * 0.5 * 0.00694$
GARAGE (Non-living area)	622	$-((319 + 319) * (453 - 580.9) + (319 + 324.9) * (580.9 - 580.9) + (324.9 + 324.9) * (580.9 - 576.9) + (324.9 + 329) * (576.9 - 580.9) + (329 + 329) * (580.9 - 817.6) + (329 + 74) * (817.6 - 817.6) + (74 + 74) * (817.6 - 471.9) + (74 + 190.1) * (471.9 - 471.9) + (190.1 + 190.1) * (471.9 - 453) + (190.1 + 319) * (453 - 453)) * 0.5 * 0.00694$
FIREPLACE (Non-living area)	15	$-((477.9 + 477.9) * (68.4 - 95.3) + (477.9 + 398.3) * (95.3 - 95.3) + (398.3 + 398.3) * (95.3 - 68.4) + (398.3 + 477.9) * (68.4 - 68.4)) * 0.5 * 0.00694$

8155 Bay Pointe Dr, Brighton, MI, United States

Gross Living Area: 3025 sq. ft



Space	Area (sq. ft)	Calculation
FLOOR 3 (Living area)	860	Coordinate Polygon Area Algorithm using inches $-((303.6 + 313.6) * (224.8 - 234.8) + (313.6 + 313.6) * (234.8 - 295) + (313.6 + 431.9) * (295 - 295.3) + (431.9 + 431.9) * (295.3 - 346.9) + (431.9 + 472) * (346.9 - 346.9) + (472 + 472) * (346.9 - 424.2) + (472 + 470.3) * (424.2 - 429) + (470.3 + 467.1) * (429 - 433.4) + (467.1 + 463.5) * (433.4 - 436.2) + (463.5 + 458.7) * (436.2 - 438.4) + (458.7 + 455) * (438.4 - 439.8) + (455 + 450.6) * (439.8 - 440.7) + (450.6 + 450.6) * (440.7 - 550.9) + (450.6 + 454.7) * (550.9 - 560.9) + (454.7 + 454.7) * (560.9 - 595.9) + (454.7 + 299) * (595.9 - 595.9) + (299 + 299) * (595.9 - 567.9) + (299 + 77.1) * (567.9 - 567.9) + (77.1 + 77.1) * (567.9 - 224.8) + (77.1 + 303.6) * (224.8 -$

8155 Bay Pointe Dr, Brighton, MI, United States

Gross Living Area: 3025 sq. ft

Space	Area (sq. ft)	Calculation <small>Coordinate Polygon Area Algorithm using inches</small>
OPEN TO BELOW (Non-living area)	711	$\begin{aligned} &224.8)) * 0.5 * 0.00694 \\ &-((540 + 540) * (75.3 - 462.8) + (540 + 577.9) * (462.8 - 500.7) + (577.9 + 684.7) * (500.7 - 500.7) \\ &+ (684.7 + 684.7) * (500.7 - 682.1) + (684.7 + 529.4) * (682.1 - 682.1) + (529.4 + 529.4) * (682.1 - \\ &560.9) + (529.4 + 454.7) * (560.9 - 560.9) + (454.7 + 450.6) * (560.9 - 550.9) + (450.6 + 450.6) * \\ &(550.9 - 440.7) + (450.6 + 455) * (440.7 - 439.8) + (455 + 458.7) * (439.8 - 438.4) + (458.7 + \\ &463.5) * (438.4 - 436.2) + (463.5 + 467.1) * (436.2 - 433.4) + (467.1 + 470.3) * (433.4 - 429) + \\ &(470.3 + 472) * (429 - 424.2) + (472 + 472) * (424.2 - 346.9) + (472 + 431.9) * (346.9 - 346.9) + \\ &(431.9 + 431.9) * (346.9 - 295.3) + (431.9 + 313.6) * (295.3 - 295) + (313.6 + 313.6) * (295 - \\ &234.8) + (313.6 + 303.6) * (234.8 - 224.8) + (303.6 + 303.6) * (224.8 - 75.3) + (303.6 + 540) * \\ &(75.3 - 75.3)) * 0.5 * 0.00694 \end{aligned}$