

2531 Laurelcherry St, Raleigh, NC, United States

Gross Living Area: 2371 sq. ft



Space	Area (sq. ft)	Calculation <small>Coordinate Polygon Area Algorithm using inches</small>
FLOOR 1 (Living area)	483	$-\left((360.5 + 360.5) * (70 - 291) + (360.5 + 267.4) * (291 - 291) + (267.4 + 267.4) * (291 - 254.6) + (267.4 + 211.9) * (254.6 - 254.6) + (211.9 + 211.9) * (254.6 - 291) + (211.9 + 130.8) * (291 - 291) + (130.8 + 130.8) * (291 - 403.4) + (130.8 + 68.2) * (403.4 - 403.4) + (68.2 + 68.2) * (403.4 - 70) + (68.2 + 360.5) * (70 - 70)\right) * 0.5 * 0.00694$
OTHER ROOM (Non-living area)	57	$-\left((130.8 + 130.8) * (403.4 - 535.3) + (130.8 + 68.2) * (535.3 - 535.3) + (68.2 + 68.2) * (535.3 - 403.4) + (68.2 + 130.8) * (403.4 - 403.4)\right) * 0.5 * 0.00694$

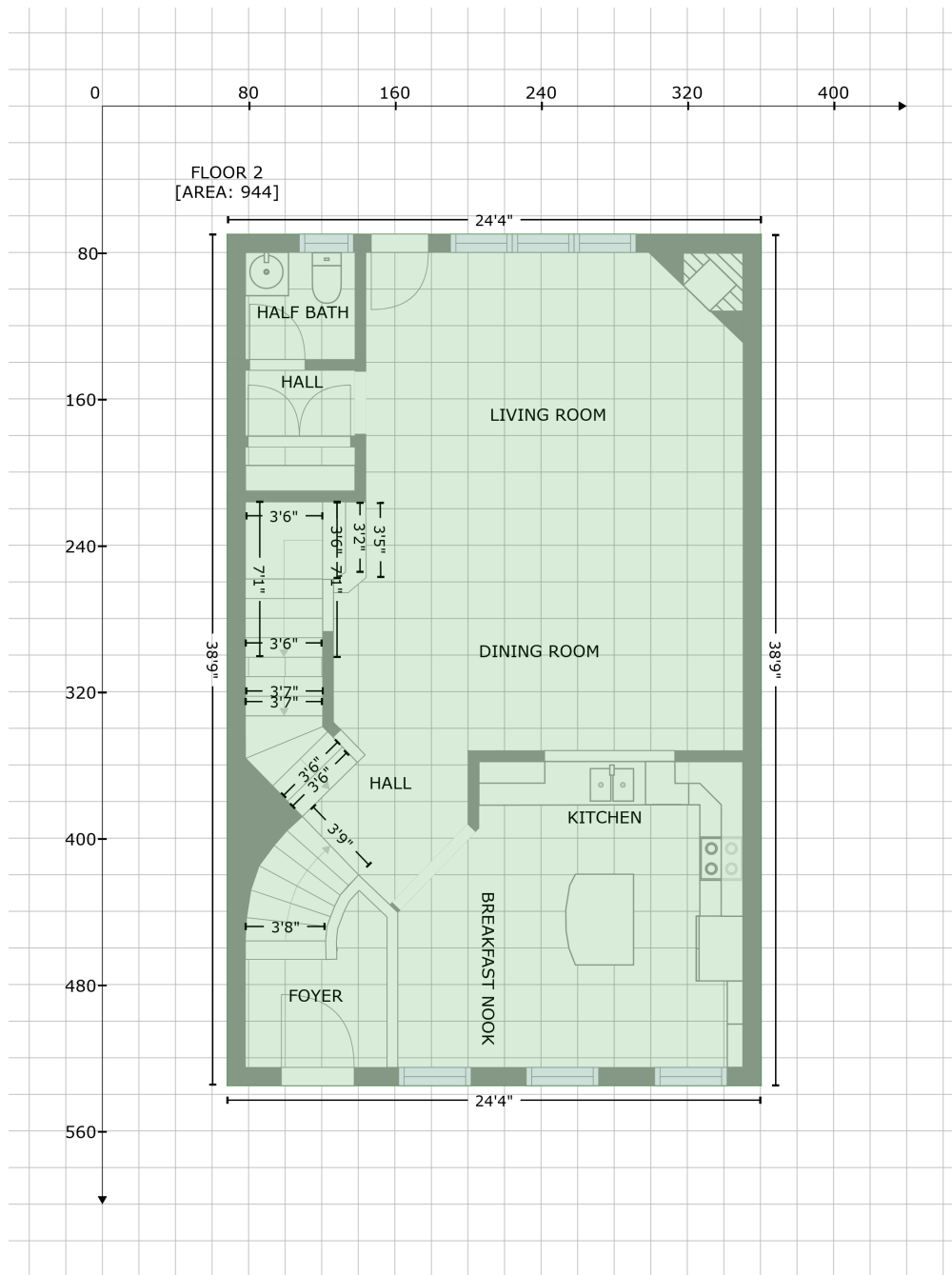
2531 Laurelcherry St, Raleigh, NC, United States

Gross Living Area: 2371 sq. ft

Space	Area (sq. ft)	Calculation <small>Coordinate Polygon Area Algorithm using inches</small>
GARAGE (Non-living area)	404	$\begin{aligned} & -((267.4 + 267.4) * (254.6 - 291) + (267.4 + 360.5) * (291 - 291) + (360.5 + 360.5) * (291 - 535.3) \\ & + (360.5 + 130.8) * (535.3 - 535.3) + (130.8 + 130.8) * (535.3 - 291) + (130.8 + 211.9) * (291 - \\ & 291) + (211.9 + 211.9) * (291 - 254.6) + (211.9 + 267.4) * (254.6 - 254.6)) * 0.5 * 0.00694 \end{aligned}$

2531 Laurelcherry St, Raleigh, NC, United States

Gross Living Area: 2371 sq. ft



Space

Area (sq. ft)

Calculation Coordinate Polygon Area Algorithm using inches

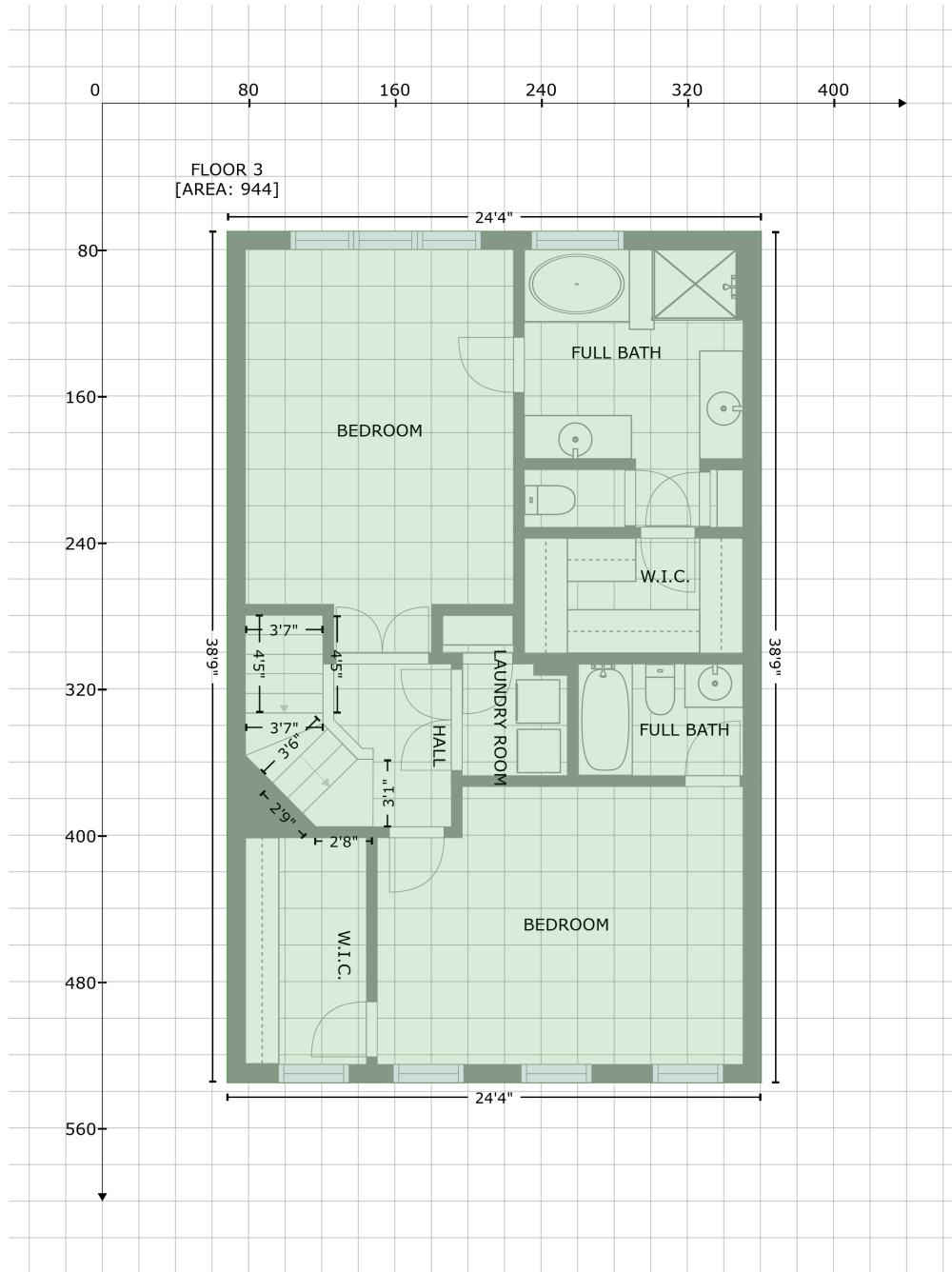
FLOOR 2
(Living area)

944

$-\left((360.5 + 360.5) * (70 - 535.3) + (360.5 + 68.2) * (535.3 - 535.3) + (68.2 + 68.2) * (535.3 - 70) + (68.2 + 360.5) * (70 - 70)\right) * 0.5 * 0.00694$

2531 Laurelcherry St, Raleigh, NC, United States

Gross Living Area: 2371 sq. ft



Space

Area (sq. ft)

Calculation Coordinate Polygon Area Algorithm using inches

FLOOR 3
(Living area)

944

$-\left((360.5 + 360.5) * (70 - 535.3) + (360.5 + 68.2) * (535.3 - 535.3) + (68.2 + 68.2) * (535.3 - 70) + (68.2 + 360.5) * (70 - 70)\right) * 0.5 * 0.00694$