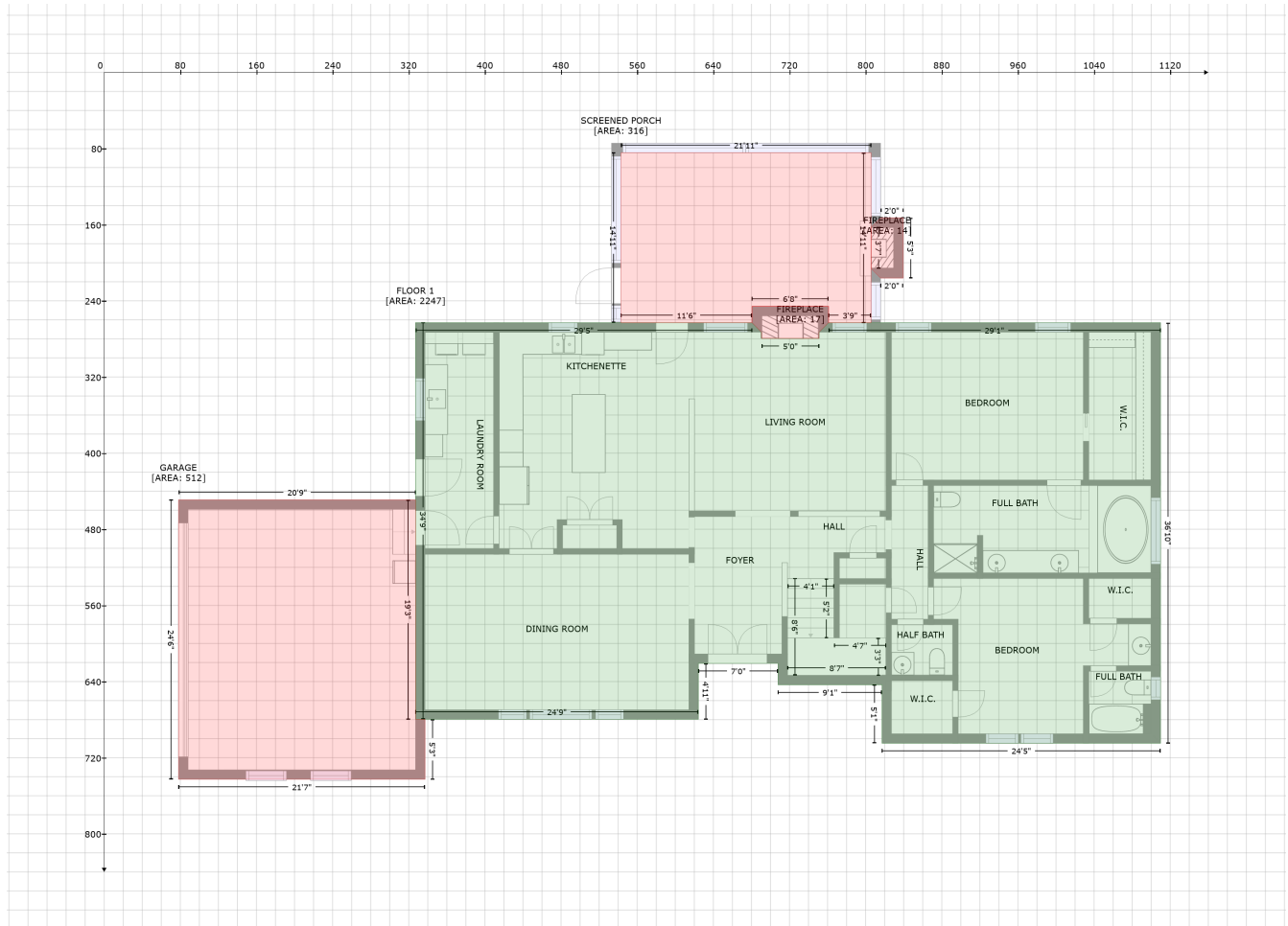


280 Lancashire Run, Smithfield, NC, USA

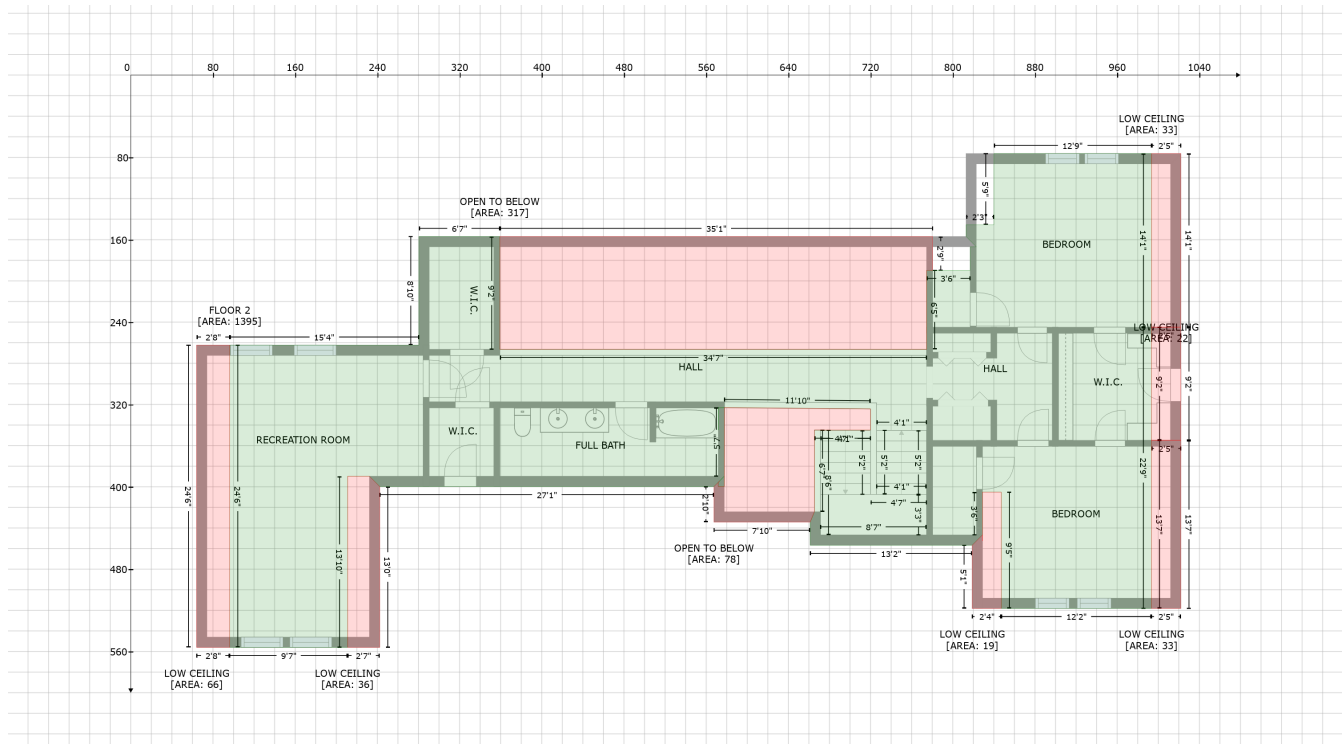
Gross Living Area: 3642 sq. ft



Space	Area (sq. ft)	Calculation <small>Coordinate Polygon Area Algorithm using inches</small>
FLOOR 1 (Living area)	2247	$-\left((680.6 + 690.6) * (263 - 273) + (690.6 + 690.6) * (273 - 279.5) + (690.6 + 751.1) * (279.5 - 279.5) + (751.1 + 751.1) * (279.5 - 273) + (751.1 + 761.1) * (273 - 263) + (761.1 + 1109.9) * (263 - 263) + (1109.9 + 1109.9) * (263 - 704.9) + (1109.9 + 817.2) * (704.9 - 704.9) + (817.2 + 817.2) * (704.9 - 643.5) + (817.2 + 708) * (643.5 - 643.5) + (708 + 708) * (643.5 - 621) + (708 + 624.3) * (621 - 621) + (624.3 + 624.3) * (621 - 679.7) + (624.3 + 327.1) * (679.7 - 679.7) + (327.1 + 327.1) * (679.7 - 263) + (327.1 + 680.6) * (263 - 263)\right) * 0.5 * 0.00694$
GARAGE (Non-living area)	512	$-\left((327.1 + 327.1) * (449.1 - 679.7) + (327.1 + 337.1) * (679.7 - 679.7) + (337.1 + 337.1) * (679.7 - 742.7) + (337.1 + 78.2) * (742.7 - 742.7) + (78.2 + 78.2) * (742.7 - 449.1) + (78.2 + 327.1) * (449.1 - 449.1)\right) * 0.5 * 0.00694$
SCREENED PORCH (Non-living area)	316	$-\left((805.7 + 805.7) * (84.4 - 263) + (805.7 + 761.1) * (263 - 263) + (761.1 + 761.1) * (263 - 245.7) + (761.1 + 680.6) * (245.7 - 245.7) + (680.6 + 680.6) * (245.7 - 263) + (680.6 + 543) * (263 - 263) + (543 + 543) * (263 - 84.4) + (543 + 805.7) * (84.4 - 84.4)\right) * 0.5 * 0.00694$
FIREPLACE (Non-living area)	17	$-\left((761.1 + 761.1) * (245.7 - 263) + (761.1 + 751.1) * (263 - 273) + (751.1 + 751.1) * (273 - 279.5) + (751.1 + 690.6) * (279.5 - 279.5) + (690.6 + 690.6) * (279.5 - 273) + (690.6 + 680.6) * (273 - 263) + (680.6 + 680.6) * (263 - 245.7) + (680.6 + 761.1) * (245.7 - 245.7)\right) * 0.5 * 0.00694$
FIREPLACE (Non-living area)	14	$-\left((839.5 + 839.5) * (152.7 - 216.1) + (839.5 + 815.7) * (216.1 - 216.1) + (815.7 + 805.7) * (216.1 - 206.1) + (805.7 + 805.7) * (206.1 - 162.7) + (805.7 + 815.7) * (162.7 - 152.7) + (815.7 + 839.5) * (152.7 - 152.7)\right) * 0.5 * 0.00694$

280 Lancashire Run, Smithfield, NC, USA

Gross Living Area: 3642 sq. ft



Space	Area (sq. ft)	Calculation
FLOOR 2 (Living area)	1395	$-(993.4 + 993.4) * (76.3 - 244.9) + (993.4 + 993.4) * (244.9 - 244.9) + (993.4 + 993.4) * (244.9 - 518.2) + (993.4 + 847.2) * (518.2 - 518.2) + (847.2 + 847.2) * (518.2 - 405.1) + (847.2 + 828.9) * (405.1 - 405.1) + (828.9 + 828.9) * (405.1 - 446.8) + (828.9 + 828.9) * (446.8 - 446.8) + (828.9 + 818.9) * (446.8 - 456.8) + (818.9 + 661.2) * (456.8 - 456.8) + (661.2 + 661.2) * (456.8 - 434.3) + (661.2 + 665.3) * (434.3 - 424.3) + (665.3 + 665.3) * (424.3 - 344.9) + (665.3 + 719.9) * (344.9 - 344.9) + (719.9 + 719.9) * (344.9 - 324.4) + (719.9 + 577.6) * (324.4 - 323) + (323 - 323.3) + (571.8 + 571.8) * (323.3 - 344.9) + (571.8 + 572.1) * (344.9 - 323.3) + (572.1 + 577.8) * (323.3 - 323) + (577.8 + 577.7) * (323 - 389.8) + (577.7 + 577.6) * (389.8 - 399.8) + (577.6 + 571.7) * (399.8 - 399.8) + (571.7 + 571.7) * (399.8 - 395.8) + (571.7 + 577.4) * (395.8 - 389.8) + (577.4 + 567.6) * (389.8 - 399.8) + (567.6 + 567.6) * (399.8 - 399.8) + (567.6 + 242.3) * (399.8 - 399.8) + (242.3 + 232.3) * (399.8 - 389.8) + (232.3 + 211.1) * (389.8 - 389.8) + (211.1 + 211.1) * (389.8 - 556) + (211.1 + 96.3) * (556 - 556) + (96.3 + 96.3) * (556 - 262.4) + (96.3 + 280.4) * (262.4 - 262.4) + (280.4 + 280.4) * (262.4 - 156.9) + (280.4 + 359.2) * (156.9 - 156.9) + (359.2 + 359.2) * (156.9 - 266.5) + (359.2 + 774.6) * (266.5 - 266.5) + (774.6 + 774.6) * (266.5 - 189.7) + (774.6 + 817) * (189.7 - 189.7) + (817 + 817) * (189.7 - 166.9) + (817 + 822.9) * (166.9 - 166.9) + (822.9 + 813) * (166.9 - 156.9) + (813 + 813) * (156.9 - 145.5) + (813 + 840) * (145.5 - 145.5) + (840 + 840) * (145.5 - 76.3) + (840 + 993.4) * (76.3 - 76.3) * 0.5 * 0.00694$
LOW CEILING (Non-living area)	36	$-(232.3 + 242.3) * (389.8 - 399.8) + (242.3 + 242.3) * (399.8 - 556) + (242.3 + 211.1) * (556 - 556) + (211.1 + 211.1) * (556 - 389.8) + (211.1 + 232.3) * (389.8 - 389.8) * 0.5 * 0.00694$
LOW CEILING (Non-living area)	66	$-(96.3 + 96.3) * (262.4 - 556) + (96.3 + 64.1) * (556 - 556) + (64.1 + 64.1) * (556 - 262.4) + (64.1 + 96.3) * (262.4 - 262.4) * 0.5 * 0.00694$
LOW CEILING (Non-living area)	19	$-(847.2 + 847.2) * (405.1 - 518.2) + (847.2 + 818.9) * (518.2 - 518.2) + (818.9 + 818.9) * (518.2 - 456.8) + (818.9 + 828.9) * (456.8 - 446.8) + (828.9 + 828.9) * (446.8 - 446.8) + (828.9 + 828.9) * (446.8 - 452.5) + (828.9 + 828.9) * (452.5 - 405.1) + (828.9 + 847.2) * (405.1 - 405.1) * 0.5 * 0.00694$
LOW CEILING (Non-living area)	33	$-(1022 + 1022) * (354.9 - 518.2) + (1022 + 993.4) * (518.2 - 518.2) + (993.4 + 993.4) * (518.2 - 354.9) + (993.4 + 1022) * (354.9 - 354.9) * 0.5 * 0.00694$
LOW CEILING	22	$-(1022 + 1022) * (244.9 - 354.9) + (1022 + 993.4) * (354.9 - 354.9) + (993.4 + 993.4) * (354.9 -$

280 Lancashire Run, Smithfield, NC, USA

Gross Living Area: 3642 sq. ft

Space	Area (sq. ft)	Calculation <small>Coordinate Polygon Area Algorithm using inches</small>
(Non-living area)		$244.9 + (993.4 + 1022) * (244.9 - 244.9) * 0.5 * 0.00694$
LOW CEILING (Non-living area)	33	$-((1022 + 1022) * (76.3 - 244.9) + (1022 + 993.4) * (244.9 - 244.9) + (993.4 + 993.4) * (244.9 - 76.3) + (993.4 + 1022) * (76.3 - 76.3)) * 0.5 * 0.00694$
OPEN TO BELOW (Non-living area)	78	$-((577.8 + 719.9) * (323 - 324.4) + (719.9 + 719.9) * (324.4 - 344.9) + (719.9 + 665.3) * (344.9 - 344.9) + (665.3 + 665.3) * (344.9 - 424.3) + (665.3 + 661.2) * (424.3 - 434.3) + (661.2 + 567.6) * (434.3 - 434.3) + (567.6 + 567.6) * (434.3 - 399.8) + (567.6 + 573.3) * (399.8 - 394.3) + (573.3 + 571.7) * (394.3 - 395.8) + (571.7 + 571.7) * (395.8 - 399.8) + (571.7 + 577.6) * (399.8 - 399.8) + (577.6 + 577.7) * (399.8 - 389.8) + (577.7 + 577.8) * (389.8 - 323)) * 0.5 * 0.00694$
OPEN TO BELOW (Non-living area)	317	$-((780.5 + 780.5) * (156.9 - 189.7) + (780.5 + 774.6) * (189.7 - 189.7) + (774.6 + 774.6) * (189.7 - 266.5) + (774.6 + 359.2) * (266.5 - 266.5) + (359.2 + 359.2) * (266.5 - 156.9) + (359.2 + 780.5) * (156.9 - 156.9)) * 0.5 * 0.00694$