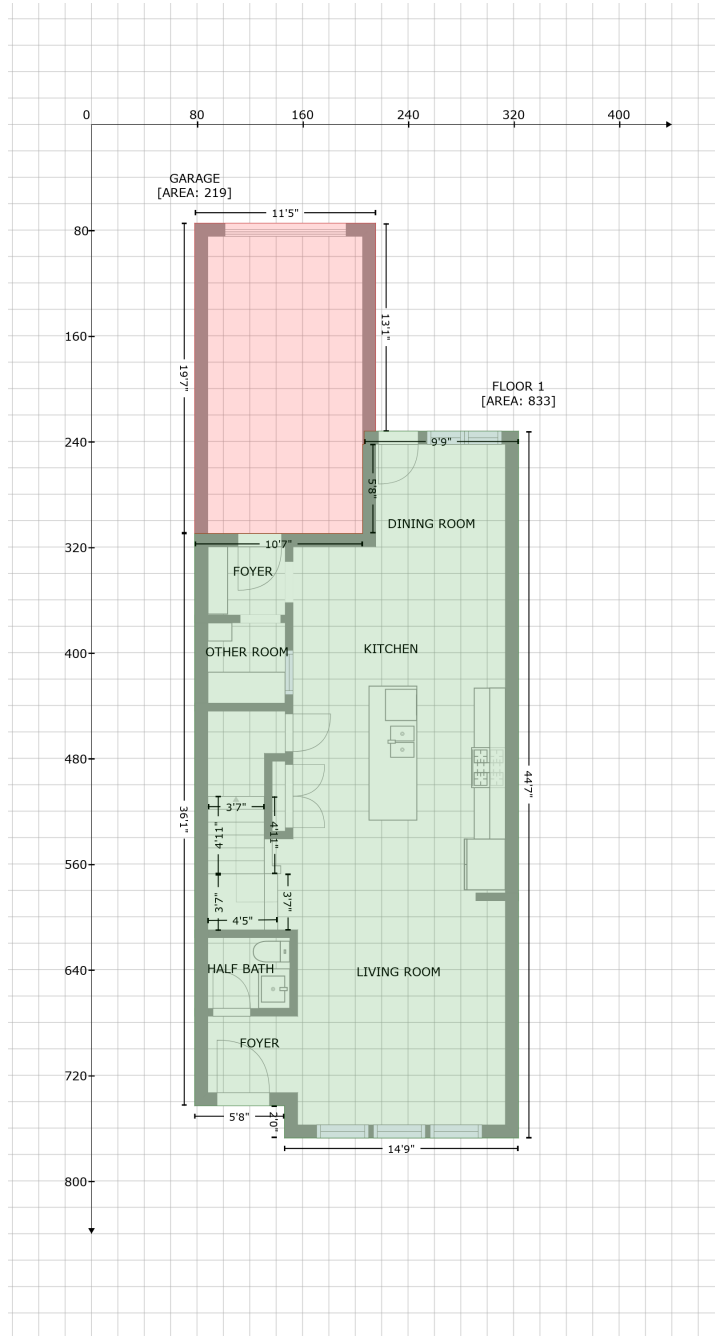


# 176 #c Waterlynn Ridge rd , Mooresville, NC, United States

Gross Living Area: 1757 sq. ft



Space	Area (sq. ft)	Calculation <small>Coordinate Polygon Area Algorithm using inches</small>
FLOOR 1 (Living area)	833	$-((323.8 + 323.8) * (232.2 - 767.6) + (323.8 + 146.3) * (767.6 - 767.6) + (146.3 + 146.3) * (767.6 - 743.2) + (146.3 + 78.2) * (743.2 - 743.2) + (78.2 + 78.2) * (743.2 - 309.8) + (78.2 + 205.5) * (309.8 - 309.8) + (205.5 + 205.5) * (309.8 - 242.2) + (205.5 + 206.7) * (242.2 - 242.2) + (206.7 + 206.7) * (242.2 - 232.2) + (206.7 + 323.8) * (232.2 - 232.2)) * 0.5 * 0.00694$
GARAGE (Non-living area)	219	$-((215.5 + 215.5) * (74.7 - 232.2) + (215.5 + 206.7) * (232.2 - 232.2) + (206.7 + 206.7) * (232.2 - 242.2) + (206.7 + 205.5) * (242.2 - 242.2) + (205.5 + 205.5) * (242.2 - 309.8) + (205.5 + 78.2) * (309.8 - 309.8)) * 0.5 * 0.00694$

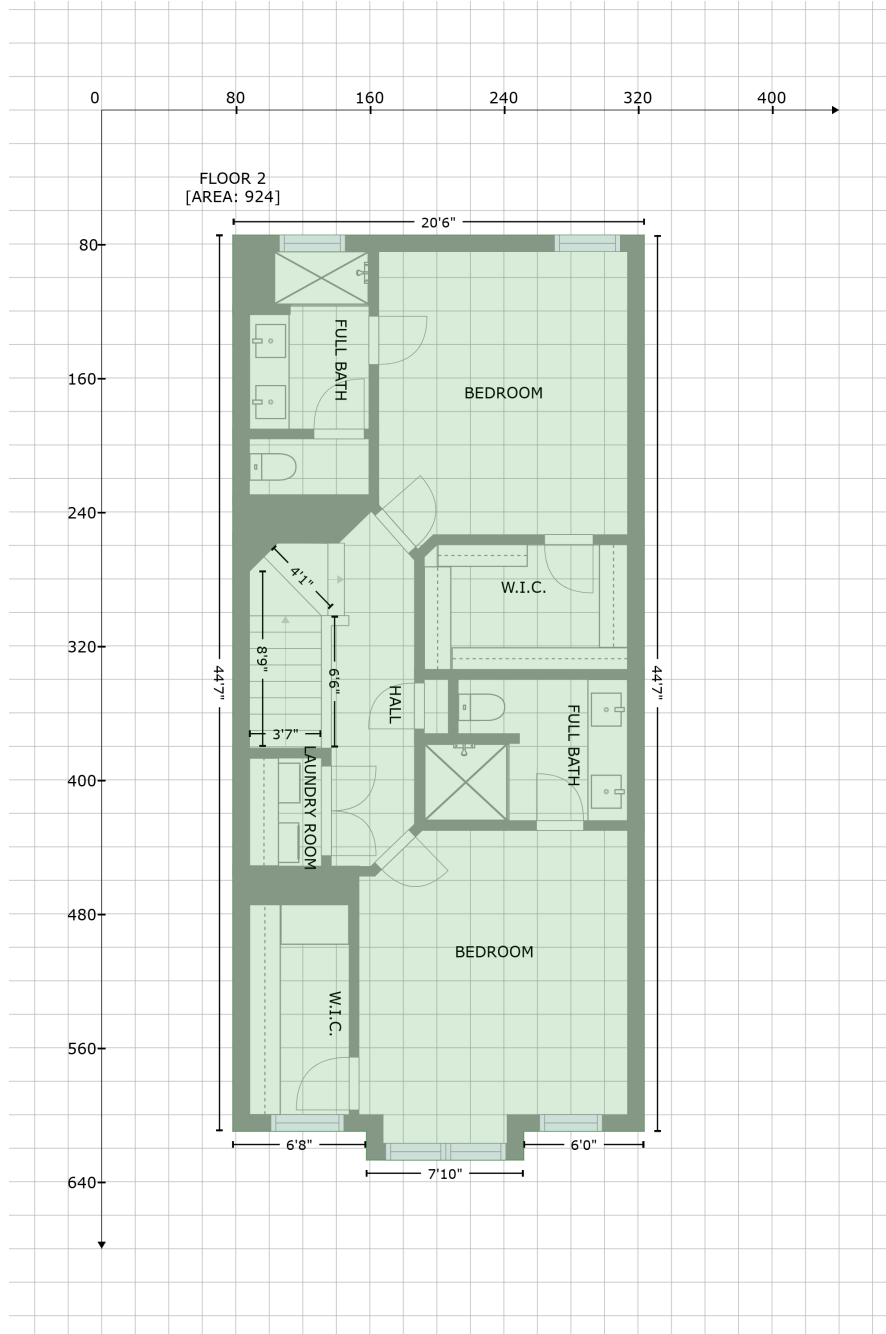
# 176 #c Waterlynn Ridge rd , Mooresville, NC, United States

Gross Living Area: 1757 sq. ft

Space	Area (sq. ft)	Calculation <small>Coordinate Polygon Area Algorithm using inches</small>
		$(309.8 - 309.8) + (78.2 + 78.2) * (309.8 - 74.7) + (78.2 + 215.5) * (74.7 - 74.7) * 0.5 * 0.00694$

# 176 #c Waterlynn Ridge rd , Mooresville, NC, United States

Gross Living Area: 1757 sq. ft



## Space

Area (sq. ft)

Calculation Coordinate Polygon Area Algorithm using inches

FLOOR 2  
(Living area)

924

$-\left((323.8 + 323.8) * (74.6 - 609.9) + (323.8 + 251.9) * (609.9 - 609.9) + (251.9 + 251.9) * (609.9 - 627.1) + (251.9 + 157.9) * (627.1 - 627.1) + (157.9 + 157.9) * (627.1 - 609.9) + (157.9 + 78.2) * (609.9 - 609.9) + (78.2 + 78.2) * (609.9 - 74.6) + (78.2 + 323.8) * (74.6 - 74.6)\right) * 0.5 * 0.00694$