

1112 Tulip Poplar Rd, Fuquay-Varina, NC, United States

Gross Living Area: 1933 sq. ft



Space	Area (sq. ft)	Calculation <small>Coordinate Polygon Area Algorithm using inches</small>
FLOOR 1 (Living area)	771	$-\left((216.7 + 250.1) * (75.9 - 109.4) + (250.1 + 449.1) * (109.4 - 109.4) + (449.1 + 449.1) * (109.4 - 515.6) + (449.1 + 354.3) * (515.6 - 515.6) + (354.3 + 350.2) * (515.6 - 511.5) + (350.2 + 350.2) * (511.5 - 514) + (350.2 + 344.3) * (514 - 514) + (344.3 + 344.3) * (514 - 350.9) + (344.3 + 78.7) * (350.9 - 350.9) + (78.7 + 78.7) * (350.9 - 115.4) + (78.7 + 119.2) * (115.4 - 76.2) + (119.2 + 216.7) * (76.2 - 75.9)\right) * 0.5 + 0.00694$
GARAGE	447	$-\left((344.3 + 344.3) * (350.9 - 514) + (344.3 + 350.2) * (514 - 514) + (350.2 + 350.2) * (514 - 511.5)\right)$

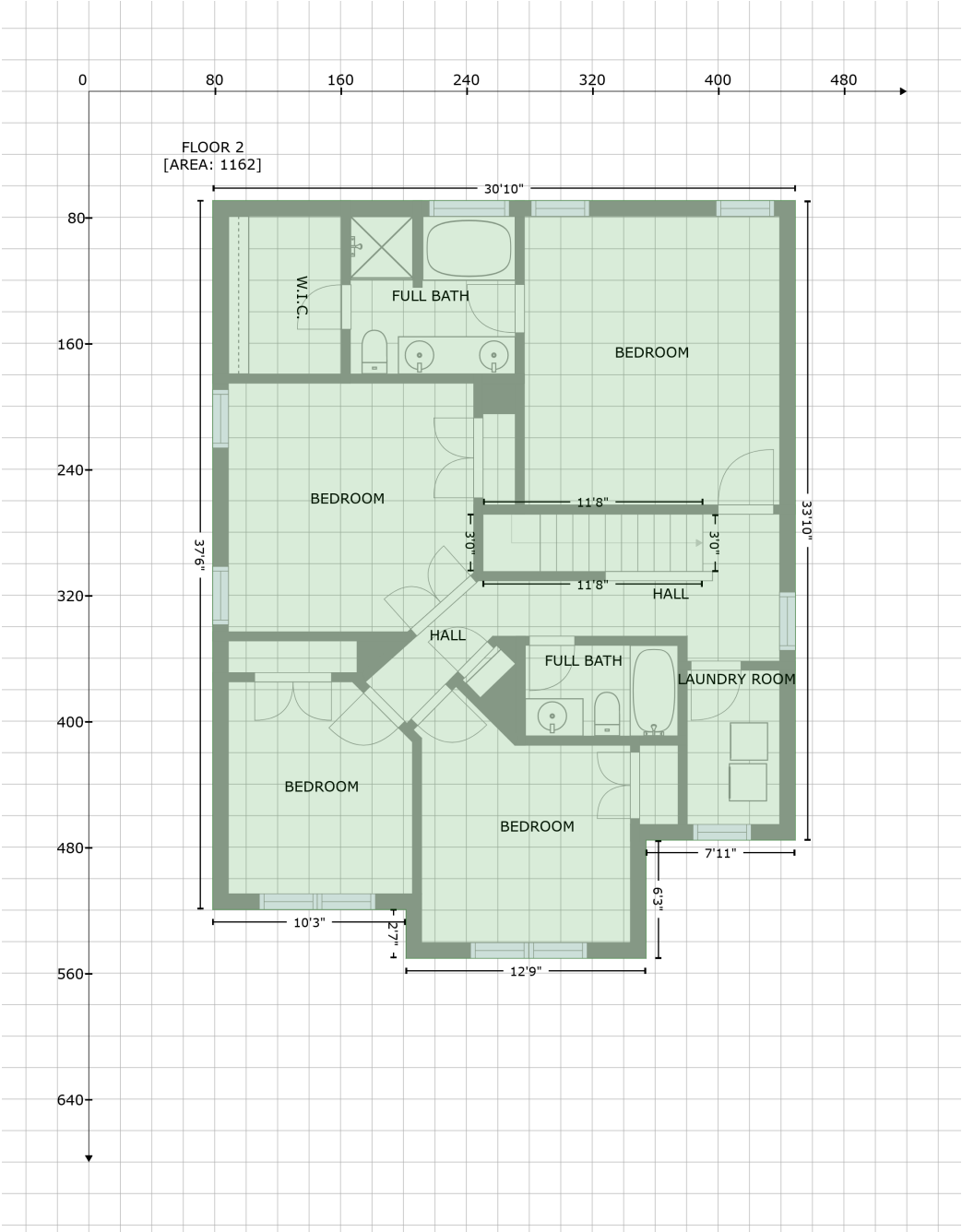
1112 Tulip Poplar Rd, Fuquay-Varina, NC, United States

Gross Living Area: 1933 sq. ft

Space	Area (sq. ft)	Calculation <small>Coordinate Polygon Area Algorithm using inches</small>
(Non-living area)		$+ (350.2 + 354.3) * (511.5 - 515.6) + (354.3 + 354.3) * (515.6 - 590.7) + (354.3 + 78.7) * (590.7 - 590.7) + (78.7 + 78.7) * (590.7 - 350.9) + (78.7 + 344.3) * (350.9 - 350.9) * 0.5 * 0.00694$

1112 Tulip Poplar Rd, Fuquay-Varina, NC, United States

Gross Living Area: 1933 sq. ft



Space	Area (sq. ft)	Calculation <small>Coordinate Polygon Area Algorithm using inches</small>
FLOOR 2 (Living area)	1162	$-\left((449.1 + 449.1) * (69.4 - 475.6) + (449.1 + 354.3) * (475.6 - 475.6) + (354.3 + 354.3) * (475.6 - 550.7) + (354.3 + 201.6) * (550.7 - 550.7) + (201.6 + 201.6) * (550.7 - 519.6) + (201.6 + 78.7) * (519.6 - 519.6) + (78.7 + 78.7) * (519.6 - 69.4) + (78.7 + 449.1) * (69.4 - 69.4)\right) * 0.5 * 0.00694$