

# 2106 Hemlock Hill Dr, Durham, NC, United States

Gross Living Area: 2971 sq. ft



## Space

## Area (sq. ft)

## Calculation Coordinate Polygon Area Algorithm using inches

FLOOR 1  
(Living area)

1726

$$\begin{aligned}
 & -((505.3 + 505.3) * (78.3 - 118.8) + (505.3 + 682.1) * (118.8 - 118.8) + (682.1 + 682.1) * (118.8 - \\
 & 572.7) + (682.1 + 537) * (572.7 - 572.7) + (537 + 537) * (572.7 - 589.7) + (537 + 442) * (589.7 - \\
 & 589.7) + (442 + 442) * (589.7 - 572.7) + (442 + 325.8) * (572.7 - 572.7) + (325.8 + 321.8) * \\
 & (572.7 - 568.6) + (321.8 + 321.8) * (568.6 - 573.2) + (321.8 + 315.9) * (573.2 - 573.2) + (315.9 + \\
 & 315.9) * (573.2 - 413.9) + (315.9 + 156.7) * (413.9 - 413.9) + (156.7 + 156.7) * (413.9 - 391.9) + \\
 & (156.7 + 74.7) * (391.9 - 391.9) + (74.7 + 74.7) * (391.9 - 125.2) + (74.7 + 148.9) * (125.2 - 125.2) \\
 & + (148.9 + 179.3) * (125.2 - 94.8) + (179.3 + 281.2) * (94.8 - 94.8) + (281.2 + 281.2) * (94.8 -
 \end{aligned}$$

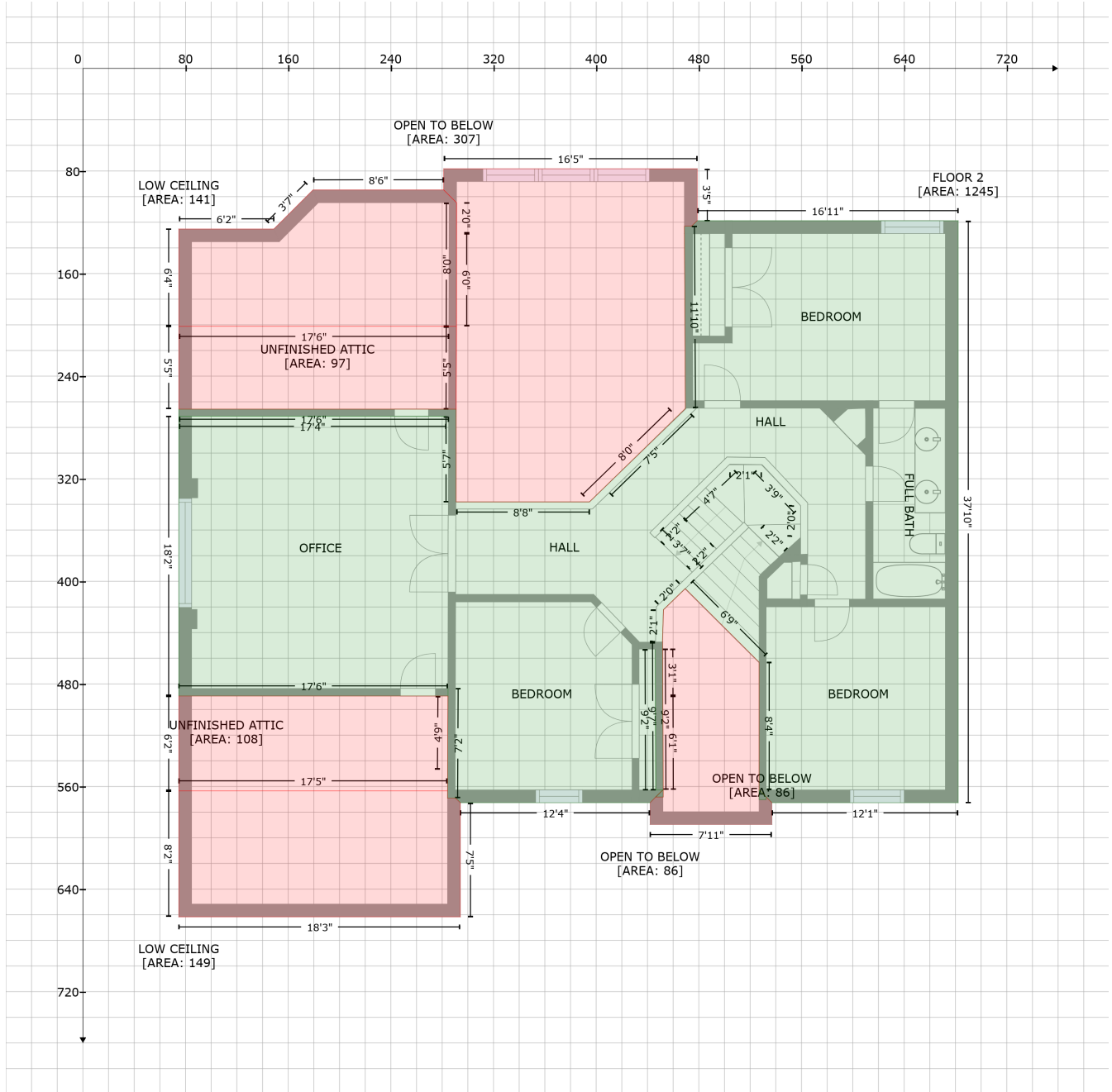
# 2106 Hemlock Hill Dr, Durham, NC, United States

Gross Living Area: 2971 sq. ft

Space	Area (sq. ft)	Calculation <small>Coordinate Polygon Area Algorithm using inches</small>
		$78.3 + (281.2 + 505.3) * (78.3 - 78.3) * 0.5 * 0.00694$
GARAGE (Non-living area)	434	$-((156.7 + 156.7) * (391.9 - 413.9) + (156.7 + 315.9) * (413.9 - 413.9) + (315.9 + 315.8) * (413.9 - 562.7) + (315.8 + 315.9) * (562.7 - 562.7) + (315.9 + 315.9) * (562.7 - 573.2) + (315.9 + 321.8) * (573.2 - 573.2) + (321.8 + 321.8) * (573.2 - 568.6) + (321.8 + 325.7) * (568.6 - 572.5) + (325.7 + 325.8) * (572.5 - 572.7) + (325.8 + 325.8) * (572.7 - 661.7) + (325.8 + 74.7) * (661.7 - 661.7) + (74.7 + 74.7) * (661.7 - 391.9) + (74.7 + 156.7) * (391.9 - 391.9)) * 0.5 * 0.00694$

# 2106 Hemlock Hill Dr, Durham, NC, United States

Gross Living Area: 2971 sq. ft



Space	Area (sq. ft)	Calculation
FLOOR 2 (Living area)	1245	Coordinate Polygon Area Algorithm using inches $-((452 + 442) * (562.7 - 572.7) + (442 + 294.2) * (572.7 - 572.7) + (294.2 + 290.2) * (572.7 - 568.6) + (290.2 + 290.1) * (568.6 - 569.2) + (290.1 + 284.2) * (569.2 - 569.2) + (284.2 + 284.6) * (569.2 - 483.5) + (284.6 + 284.6) * (483.5 - 489.4) + (284.6 + 74.7) * (489.4 - 489.4) + (74.7 + 74.7) * (489.4 - 271.3) + (74.7 + 283) * (271.3 - 271.3) + (283 + 74.7) * (271.3 - 271.3) + (74.7 + 74.7) * (271.3 - 265.8) + (74.7 + 285) * (265.8 - 265.8) + (285 + 290.9) * (265.8 - 265.8) + (290.9 + 290.9) * (265.8 - 271.3) + (290.9 + 290.9) * (271.3 - 338.1) + (290.9 + 394.8) * (338.1 - 338.1) + (394.8 + 406) * (338.1 - 327.2) + (406 + 469.6) * (327.2 - 265) + (469.6 + 469.5) * (265 - 265) +$

# 2106 Hemlock Hill Dr, Durham, NC, United States

Gross Living Area: 2971 sq. ft

Space	Area (sq. ft)	Calculation <small>Coordinate Polygon Area Algorithm using inches</small>
		$(469.5 + 468.7) * (265 - 123.2) + (468.7 + 474.2) * (123.2 - 123.2) + (474.2 + 478.7) * (123.2 - 118.8) + (478.7 + 682.1) * (118.8 - 118.8) + (682.1 + 682.1) * (118.8 - 572.7) + (682.1 + 537) * (572.7 - 572.7) + (537 + 527) * (572.7 - 562.7) + (527 + 527) * (562.7 - 463.1) + (527 + 469.4) * (463.1 - 405.6) + (469.4 + 452.4) * (405.6 - 422.2) + (452.4 + 451.6) * (422.2 - 447.4) + (451.6 + 451.8) * (447.4 - 447.4) + (451.8 + 452.2) * (447.4 - 562.7) + (452.2 + 446.5) * (562.7 - 562.7) + (446.5 + 446) * (562.7 - 452.9) + (446 + 446.4) * (452.9 - 562.7) + (446.4 + 452) * (562.7 - 562.7) * 0.5 + 0.00694 - ((527 + 532.5) * (562.7 - 568.2) + (532.5 + 532.5) * (568.2 - 570.2) + (532.5 + 527) * (570.2 - 570.2) + (527 + 527) * (570.2 - 562.7)) * 0.5 + 0.00694 - ((452.2 + 452.3) * (562.7 - 568.2) + (452.3 + 446.4) * (568.2 - 568.2) + (446.4 + 452) * (568.2 - 562.7) + (452 + 452.2) * (562.7 - 562.7)) * 0.5 + 0.00694$
UNFINISHED ATTIC (Non-living area)	108	$-((284.6 + 284.2) * (489.4 - 546.6) + (284.2 + 284.2) * (546.6 - 563.5) + (284.2 + 74.7) * (563.5 - 563.5) + (74.7 + 74.7) * (563.5 - 489.4) + (74.7 + 284.6) * (489.4 - 489.4)) * 0.5 + 0.00694$
UNFINISHED ATTIC (Non-living area)	97	$-((285.2 + 291.1) * (201.1 - 201.1) + (291.1 + 290.9) * (201.1 - 265.8) + (290.9 + 285) * (265.8 - 265.8) + (285 + 74.7) * (265.8 - 265.8) + (74.7 + 74.7) * (265.8 - 201.1) + (74.7 + 285.2) * (201.1 - 201.1)) * 0.5 + 0.00694$
LOW CEILING (Non-living area)	149	$-((284.2 + 284.2) * (563.5 - 569.2) + (284.2 + 290.1) * (569.2 - 569.2) + (290.1 + 290.2) * (569.2 - 569) + (290.2 + 294.2) * (569 - 572.7) + (294.2 + 294.2) * (572.7 - 661.7) + (294.2 + 74.7) * (661.7 - 661.7) + (74.7 + 74.7) * (661.7 - 563.5) + (74.7 + 284.2) * (563.5 - 563.5)) * 0.5 + 0.00694$
LOW CEILING (Non-living area)	141	$-((281.2 + 291.2) * (94.8 - 104.8) + (291.2 + 291.1) * (104.8 - 201.1) + (291.1 + 285.2) * (201.1 - 201.1) + (285.2 + 74.7) * (201.1 - 201.1) + (74.7 + 74.7) * (201.1 - 125.2) + (74.7 + 148.9) * (125.2 - 125.2) + (148.9 + 179.3) * (125.2 - 94.8) + (179.3 + 281.2) * (94.8 - 94.8)) * 0.5 + 0.00694$
OPEN TO BELOW (Non-living area)	86	$-((469.4 + 527) * (405.6 - 463.1) + (527 + 527) * (463.1 - 562.7) + (527 + 537) * (562.7 - 572.7) + (537 + 537) * (572.7 - 589.7) + (537 + 442) * (589.7 - 589.7) + (442 + 442) * (589.7 - 572.7) + (442 + 446.3) * (572.7 - 568.2) + (446.3 + 451.7) * (568.2 - 563.1) + (451.7 + 446.4) * (563.1 - 568.2) + (446.4 + 452.3) * (568.2 - 568.2) + (452.3 + 452.2) * (568.2 - 562.7) + (452.2 + 452) * (562.7 - 489.4) + (452 + 451.8) * (489.4 - 452.9) + (451.8 + 451.8) * (452.9 - 447.4) + (451.8 + 451.6) * (447.4 - 447.4) + (451.6 + 452.4) * (447.4 - 422.2) + (452.4 + 469.4) * (422.2 - 405.6)) * 0.5 + 0.00694$
OPEN TO BELOW (Non-living area)	86	$-((527 + 527) * (562.7 - 570.2) + (527 + 532.5) * (570.2 - 570.2) + (532.5 + 532.5) * (570.2 - 568.2) + (532.5 + 527) * (568.2 - 562.7)) * 0.5 + 0.00694$
OPEN TO BELOW (Non-living area)	307	$-((478.7 + 478.7) * (78.3 - 118.8) + (478.7 + 474.2) * (118.8 - 123.2) + (474.2 + 468.7) * (123.2 - 123.2) + (468.7 + 469.5) * (123.2 - 265) + (469.5 + 469) * (265 - 265.8) + (469 + 463.3) * (265.8 - 271.3) + (463.3 + 394.8) * (271.3 - 338.1) + (394.8 + 290.9) * (338.1 - 338.1) + (290.9 + 290.9) * (338.1 - 271.3) + (290.9 + 290.9) * (271.3 - 265.8) + (290.9 + 291.3) * (265.8 - 201.1) + (291.3 + 291.3) * (201.1 - 128.8) + (291.3 + 291.2) * (128.8 - 104.8) + (291.2 + 281.2) * (104.8 - 94.8) + (281.2 + 281.2) * (94.8 - 78.3) + (281.2 + 478.7) * (78.3 - 78.3)) * 0.5 + 0.00694$