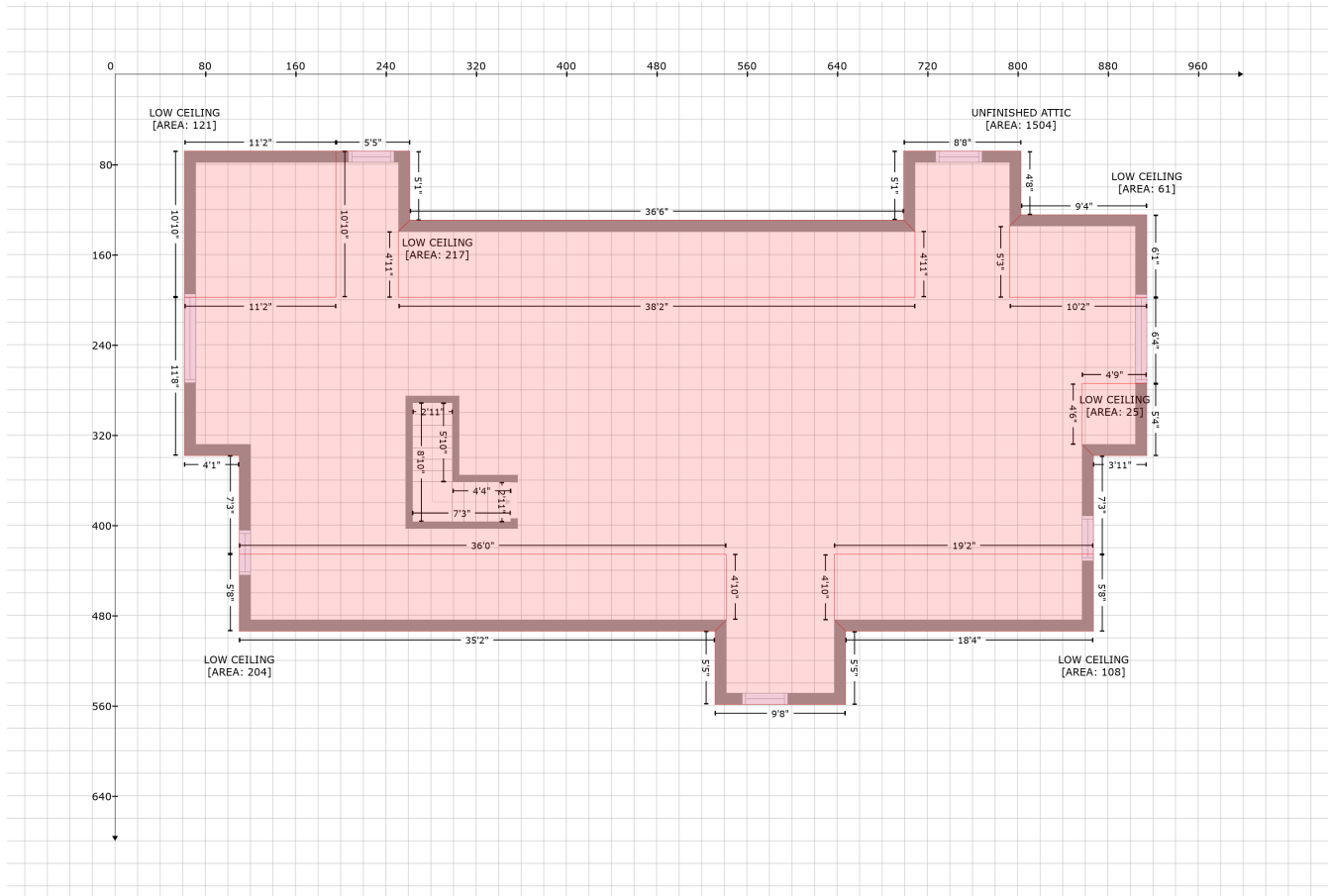


Space	Area (sq. ft)	Calculation
FLOOR 1 (Living area)	2795	Coordinate Polygon Area Algorithm using inches $-((914.5 + 914.5) * (68.1 - 231.3) + (914.5 + 916.2) * (231.3 - 231.3) + (916.2 + 916.2) * (231.3 - 237.2) + (916.2 + 914.5) * (237.2 - 237.2) + (914.5 + 914.5) * (237.2 - 403.3) + (914.5 + 867.2) * (403.3 - 403.3) + (867.2 + 867.2) * (403.3 - 559) + (867.2 + 816.4) * (559 - 559) + (816.4 + 816.4) * (559 - 571.4) + (816.4 + 691) * (571.4 - 571.4) + (691 + 691) * (571.4 - 559) + (691 + 514.4) * (559 - 559) + (514.4 + 514.4) * (559 - 494) + (514.4 + 405.4) * (494 - 494) + (405.4 + 405.4) * (494 - 574.8) + (405.4 + 186) * (574.8 - 574.8) + (186 + 186) * (574.8 - 566.8) + (186 + 110.1) * (566.8 - 566.8) + (110.1 + 110.1) * (566.8 - 407.1) + (110.1 + 61.5) * (407.1 - 407.1) + (61.5 + 61.5) * (407.1 - 68.1) + (61.5 + 914.5) * (68.1 - 68.1)) * 0.5 * 0.00694$



Space	Area (sq. ft)	Calculation
UNFINISHED ATTIC (Non-living area)	1504	$-(261.3 + 261.3) * (68.2 - 129.4) + (261.3 + 251.3) * (129.4 - 139.4) + (251.3 + 251.3) * (139.4 - 197.9) + (251.3 + 709) * (197.9 - 197.9) + (709 + 709) * (197.9 - 139.4) + (709 + 699) * (139.4 - 129.4) + (699 + 699) * (129.4 - 68.2) + (699 + 803) * (68.2 - 68.2) + (803 + 803) * (68.2 - 124.7) + (803 + 793) * (124.7 - 134.7) + (793 + 793) * (134.7 - 197.9) + (793 + 914.5) * (197.9 - 197.9) + (914.5 + 914.5) * (197.9 - 274.3) + (914.5 + 857.2) * (274.3 - 274.3) + (857.2 + 857.2) * (274.3 - 328.4) + (857.2 + 867.2) * (328.4 - 338.4) + (867.2 + 867.2) * (338.4 - 425.8) + (867.2 + 637.6) * (425.8 - 425.8) + (637.6 + 637.6) * (425.8 - 484) + (637.6 + 647.6) * (484 - 494) + (647.6 + 647.6) * (494 - 559) + (647.6 + 531.8) * (559 - 559) + (531.8 + 531.8) * (559 - 494) + (531.8 + 541.8) * (494 - 484) + (541.8 + 541.8) * (484 - 425.8) + (541.8 + 110.1) * (425.8 - 425.8) + (110.1 + 110.1) * (425.8 - 338.4) + (110.1 + 61.5) * (338.4 - 338.4) + (61.5 + 61.5) * (338.4 - 197.9) + (61.5 + 195.8) * (197.9 - 197.9) + (195.8 + 195.8) * (197.9 - 68.2) + (195.8 + 261.3) * (68.2 - 68.2) * 0.5 * 0.00694$
LOW CEILING (Non-living area)	108	$-(867.2 + 867.2) * (425.8 - 494) + (867.2 + 647.6) * (494 - 494) + (647.6 + 637.6) * (494 - 484) + (637.6 + 637.6) * (484 - 425.8) + (637.6 + 867.2) * (425.8 - 425.8) * 0.5 * 0.00694$
LOW CEILING (Non-living area)	204	$-(541.8 + 541.8) * (425.8 - 484) + (541.8 + 531.8) * (484 - 494) + (531.8 + 110.1) * (494 - 494) + (110.1 + 110.1) * (494 - 425.8) + (110.1 + 541.8) * (425.8 - 425.8) * 0.5 * 0.00694$
LOW CEILING (Non-living area)	25	$-(914.5 + 914.5) * (274.3 - 338.4) + (914.5 + 867.2) * (338.4 - 338.4) + (867.2 + 857.2) * (338.4 - 328.4) + (857.2 + 857.2) * (328.4 - 274.3) + (857.2 + 914.5) * (274.3 - 274.3) * 0.5 * 0.00694$
LOW CEILING (Non-living area)	61	$-(914.5 + 914.5) * (124.7 - 197.9) + (914.5 + 793) * (197.9 - 197.9) + (793 + 793) * (197.9 - 134.7) + (793 + 803) * (134.7 - 124.7) + (803 + 914.5) * (124.7 - 124.7) * 0.5 * 0.00694$
LOW CEILING (Non-living area)	217	$-(699 + 709) * (129.4 - 139.4) + (709 + 709) * (139.4 - 197.9) + (709 + 251.3) * (197.9 - 197.9) + (251.3 + 251.3) * (197.9 - 139.4) + (251.3 + 261.3) * (139.4 - 129.4) + (261.3 + 699) * (129.4 -$

# 156 Winford Rd, Eagle Springs, NC, United States

Gross Living Area: 2795 sq. ft

Space	Area (sq. ft)	Calculation <small>Coordinate Polygon Area Algorithm using inches</small>
LOW CEILING (Non-living area)	121	$129.4) * 0.5 * 0.00694$ $-((195.8 + 195.8) * (68.2 - 197.9) + (195.8 + 61.5) * (197.9 - 197.9) + (61.5 + 61.5) * (197.9 - 68.2) + (61.5 + 195.8) * (68.2 - 68.2)) * 0.5 * 0.00694$